

V&V Reference Report

L2 ASCDS Version : 8.5.1.1

Observation 62896 - L2 Version 3
Chandra X-Ray Center

L2 Processing Date : Jan 31 2013

Contents

1	Front	2
2	OBI	3
2.1	OBI	3
2.1.1	Images	3
2.1.2	Bias	3
2.1.3	Parameters	4
2.1.4	Events	4
2.2	Compared Parameters	5
2.3	Star Slots	6
2.4	FID Slots	6
A	Summary	7
A.1	Status	7
A.2	Comments	7

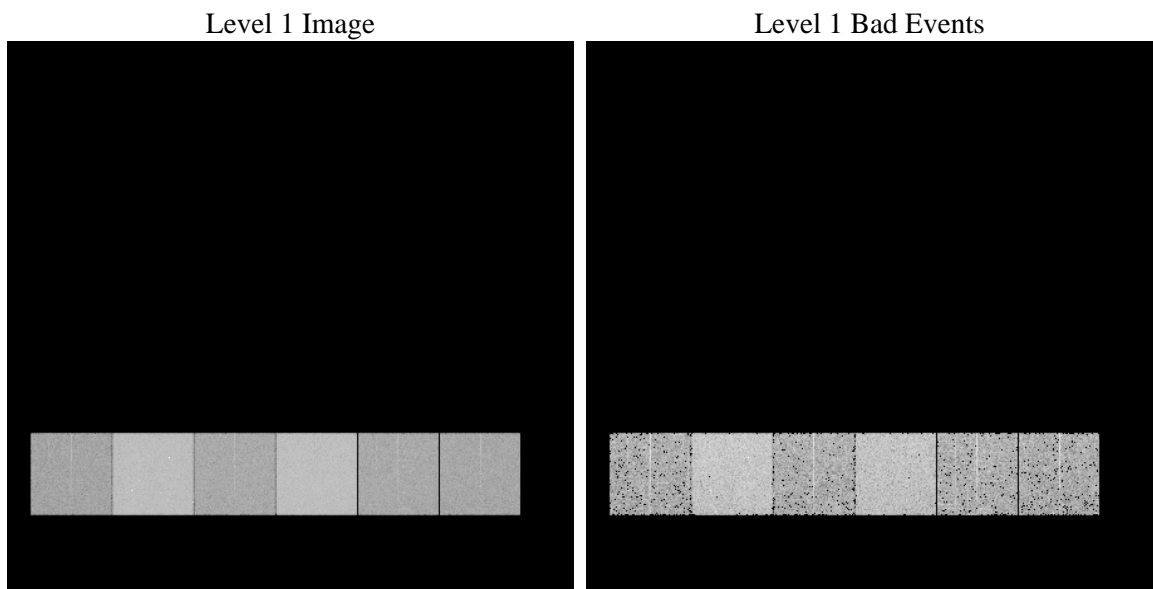
1 Front

seq_num	 	Sequence number
obs_id	62896	Observation id
title	ACIS-456789 diagnostics; interrupted by Feb2000 safemode	Proposal
observer	CHANDRA engineering request/realtime commanding	Principal investig
object	 	Source name
dtcycle	0	
cycle	P	events from which exps? Prim/Second/Both
ra_targ	0.0	Observer's specified target RA [deg]
dec_targ	0.0	Observer's specified target Dec [deg]
ra_nom	105.66756166374	Nominal RA [deg]
dec_nom	-25.703723291809	Nominal Dec [deg]
roll_nom	306.06945582365	Nominal Roll [deg]
revision	3	Processing version of data
ontime	1743.633523494	Sum of GTIs [s]
livetime	1721.5545859295	Livetime [s]
ontime4	696.8222223282	Sum of GTIs [s]
ontime5	1863.5093683898	Sum of GTIs [s]
ontime6	810.25852225721	Sum of GTIs [s]
ontime7	1743.633523494	Sum of GTIs [s]
ontime8	790.81228230894	Sum of GTIs [s]
ontime9	764.88391251862	Sum of GTIs [s]
l2events	562909	Number of level 2 events

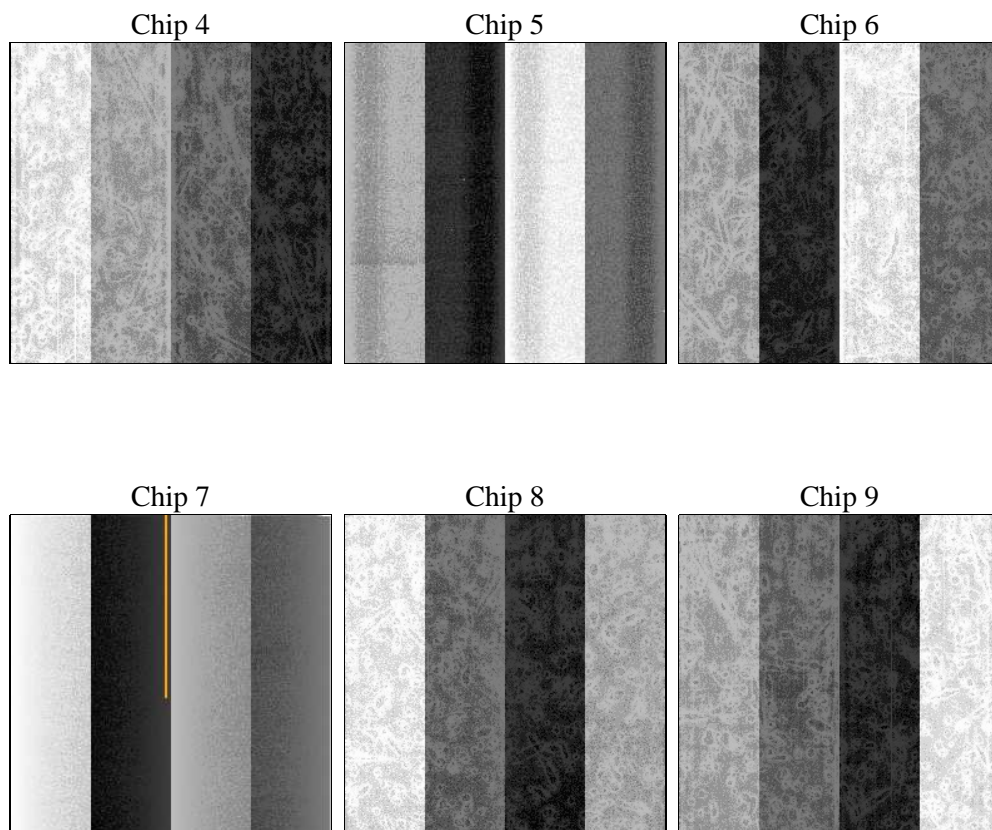
2 OBI

2.1 OBI

2.1.1 Images



2.1.2 Bias



2.1.3 Parameters

obi_num	0	Obi number	sched_exp_time	0.0	[s] Scheduled observation exposure time
ascdsver	8.5.1.1	Processing system revision	ontime	1743.633523494	Sum of GTIs [s]
caldsver	4.5.5	 	ontime4	696.8222223282	Sum of GTIs [s]
date	2013-01-31T20:17:54	Date and time of file creation	ontime5	1863.5093683898	Sum of GTIs [s]
revision	3	Processing version of data	ontime6	810.25852225721	Sum of GTIs [s]
			ontime7	1743.633523494	Sum of GTIs [s]
			ontime8	790.81228230894	Sum of GTIs [s]
			ontime9	764.88391251862	Sum of GTIs [s]
			l1events	715129	Number of level 1 events

2.1.4 Events

	ccd 4	ccd 5	ccd 6	ccd 7	ccd 8	ccd 9		ccd 4	ccd 5	ccd 6	ccd 7	ccd 8	ccd 9
level 1 events	75892	184041	91405	189941	90464	83386	grade 0 events	37970	43520	45208	45994	44617	41121
rejected events	15699	34123	16447	29493	17302	15281		50%	23%	49%	24%	49%	49%
rejected %	20%	18%	17%	15%	19%	18%	grade 1 events	228	179	252	118	247	259
								0%	0%	0%	0%	0%	0%
							grade 2 events	11740	57214	14533	39876	14348	13169
								15%	31%	15%	20%	15%	15%
							grade 3 events	4269	11557	5229	18425	5120	4650
								5%	6%	5%	9%	5%	5%
							grade 4 events	3992	11536	5065	18444	5036	4782
								5%	6%	5%	9%	5%	5%
							grade 5 events	594	3529	663	2574	751	685
								0%	1%	0%	1%	0%	0%
							grade 6 events	8868	43336	12852	56216	11991	11422
								11%	23%	14%	29%	13%	13%
							grade 7 events	8231	13170	7603	8294	8354	7298
								10%	7%	8%	4%	9%	8%

2.2 Compared Parameters

Parameter	Planned	Actual
Instrument	ACIS	ACIS
Detector	ACIS-456789	ACIS-456789
Grating	NONE	NONE
Data mode	FAINT	FAINT
Observation mode	SECONDARY	SECONDARY
[deg] Pointing RA	0	105.6675616637352
[deg] Pointing Dec	0	-25.70372329180858
[deg] Pointing Roll	0.0	306.0694558236514
[mm] SIM focus pos	-0.684267	-0.6828225247311905
[mm] SIM defocus	0	0.8505141146731063
[mm] SIM translation stage pos	-190.132523	250.466033080201
[mm] SIM translation stage offset	0	-0.01005468664627074
[s] Observation start time (MET)	67156875.977	67156875.20892499
Observation start date	2000-02-17T06:41:16	2000-02-17T06:41:15
[s] Observation end time (MET)	67162214.79700001	67162236.578191
Observation end date	2000-02-17T08:10:15	2000-02-17T08:10:36
Read mode	TIMED	TIMED

Parameter	Planned	Actual
Obspar format version number	7	7
Obspar file type	PREDICTED	ACTUAL
Obspar update status	NONE	UPDATED
On-chip summing requested	N	N
Subarray requested	NONE	NONE
Alternating exposures requested	N	N
[s] Primary exposure time	0.000000	3.2

2.3 Star Slots

2.4 FID Slots

A Summary

A.1 Status

V&V Scientist	Joy Nichols
V&V Date (YYYY-MM-DD)	2013.02.01
V&V Edition	2
V&V Disposition and Status	OK
V&V Charge Time	1.743633523494

A.2 Comments

The charge time is based on CCD_ID=7. All six chips have dropped frames due to telemetry saturation because of high radiation, and their effective exposures range from 0.7 - 1.8 ksec. Chandra went into safe mode at 2007:048:08:08:53.4, prior to an ACA CAL dark current calibration.