

V&V Reference Report

L2 ASCDS Version : 8.4.5

Observation 62803 - L2 Version 5
Chandra X-Ray Center

L2 Processing Date : Aug 25 2012

Contents

1	Front	2
2	OBI	3
2.1	OBI	3
2.1.1	Images	3
2.1.2	Bias	3
2.1.3	Parameters	4
2.1.4	Events	4
2.2	Compared Parameters	5
2.3	Star Slots	6
2.4	FID Slots	6
A	Summary	7
A.1	Status	7
A.2	Comments	7

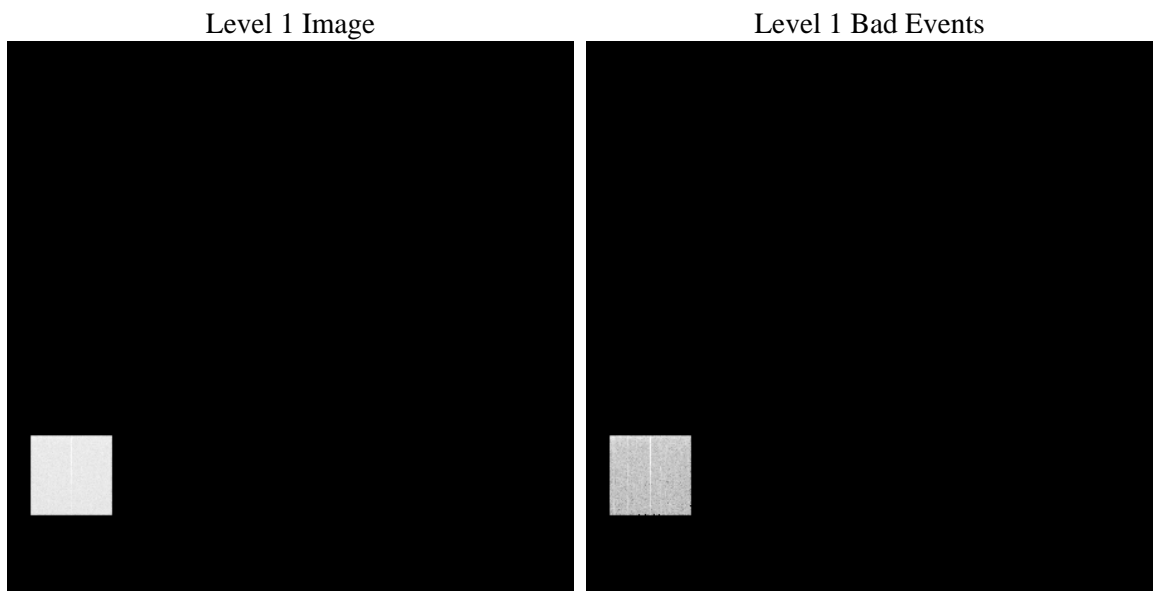
1 Front

seq_num	 	Sequence number
obs_id	62803	Observation id
title	ACIS-4 diagnostics; squeegee; S0 16 row	Proposal title
observer	CHANDRA engineering request/realtime commanding	Principal investig
object	 	Source name
dtcycle	0	
cycle	P	events from which exps? Prim/Second/Both
ra_targ	0.0	Observer's specified target RA [deg]
dec_targ	0.0	Observer's specified target Dec [deg]
ra_nom	60.043749612575	Nominal RA [deg]
dec_nom	49.991939126623	Nominal Dec [deg]
roll_nom	310.94223723003	Nominal Roll [deg]
revision	5	Processing version of data
ontime	3036.6366525888	Sum of GTIs [s]
livetime	2999.3358216433	Livetime [s]
ontime4	3036.6366525888	Sum of GTIs [s]
l2events	187822	Number of level 2 events

2 OBI

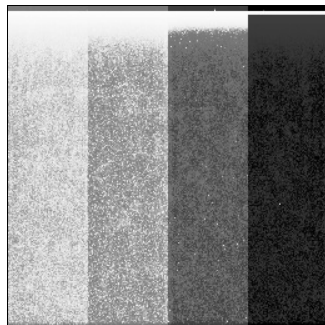
2.1 OBI

2.1.1 Images



2.1.2 Bias

Chip 4



2.1.3 Parameters

obi_num	0	Obi number	sched_exp_time	0.0	[s] Scheduled observation exposure time
ascdsver	8.4.5	Processing system revision	ontime	3036.6366525888	Sum of GTIs [s]
caldsver	4.5.1.1	 	ontime4	3036.6366525888	Sum of GTIs [s]
date	2012-08-25T20:25:38	Date and time of file creation	l1events	296480	Number of level 1 events
revision	5	Processing version of data			

2.1.4 Events

	ccd 4
level 1 events	296480
rejected events	55527
rejected %	18%

	ccd 4
grade 0 events	143270
	48%
grade 1 events	932
	0%
grade 2 events	45181
	15%
grade 3 events	16404
	5%
grade 4 events	16233
	5%
grade 5 events	2171
	0%
grade 6 events	35623
	12%
grade 7 events	36666
	12%

2.2 Compared Parameters

Parameter	Planned	Actual	Parameter	Planned	Actual
Instrument	ACIS	ACIS	Obspar format version number	7	7
Detector	ACIS-4	ACIS-4	Obspar file type	PREDICTED	ACTUAL
Grating	NONE	NONE	Obspar update status	OVERRIDE	OVERRIDE
Data mode	FAINT	FAINT	Number of optional ACIS chips dropped	0	0
Observation mode	SECONDARY	SECONDARY	On-chip summing requested	N	N
[deg] Pointing RA	60.04374961257312	60.04374961257454	Subarray requested	NONE	NONE
[deg] Pointing Dec	49.99193912662217	49.99193912662255	Alternating exposures requested	N	N
[deg] Pointing Roll	310.9422372299421	310.9422372300274	[s] Primary exposure time	3.2	3.2
[mm] SIM focus pos	-0.684267	-0.684267			
[mm] SIM defocus	0.8490695631557434	0.8490695631557434			
[mm] SIM translation stage pos	0	0			
[mm] SIM translation stage offset	250.4559758189947	250.4559758189947			
[s] Observation start time (MET)	72226493.417	72226493.417			
Observation start date	2000-04-15T22:54:53	2000-04-15T22:54:53			
[s] Observation end time (MET)	72231195.9995959	72231195.9995959			
Observation end date	2000-04-16T00:13:15	2000-04-16T00:13:15			
Read mode	TIMED	TIMED			

2.3 Star Slots

2.4 FID Slots

A Summary

A.1 Status

V&V Scientist	Jen Lauer
V&V Date (YYYY-MM-DD)	2012.08.28
V&V Edition	1
V&V Disposition and Status	OK
V&V Charge Time	3.0366366525888

A.2 Comments

Squeegee mode diagnostic observation; bias map is non-standard.