

V&V Reference Report

L2 ASCDS Version : 8.4.5

Observation 62194 - L2 Version 4
Chandra X-Ray Center

L2 Processing Date : Aug 21 2012

Contents

1	Front	2
2	OBI	3
2.1	OBI	3
2.1.1	Images	3
2.1.2	Bias	3
2.1.3	Parameters	4
2.1.4	Events	4
2.2	Compared Parameters	5
2.3	Star Slots	6
2.4	FID Slots	6
A	Summary	7
A.1	Status	7
A.2	Comments	7

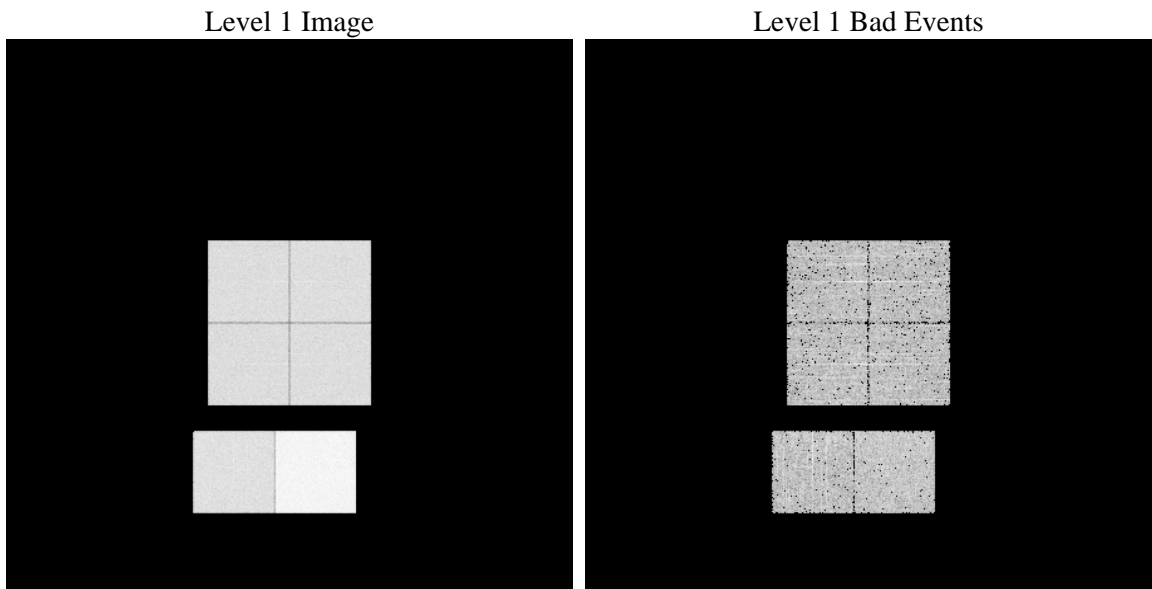
1 Front

seq_num	 	Sequence number
obs_id	62194	Observation id
title	ACIS-012367 diagnostics	Proposal title
observer	CHANDRA engineering request/realtime commanding	Principal investig
object	 	Source name
dtcycle	0	
cycle	P	events from which exps? Prim/Second/Both
ra_targ	0.0	Observer's specified target RA [deg]
dec_targ	0.0	Observer's specified target Dec [deg]
ra_nom	110.10909129385	Nominal RA [deg]
dec_nom	-31.433057782869	Nominal Dec [deg]
roll_nom	330.17302530249	Nominal Roll [deg]
revision	4	Processing version of data
ontime	3268.7434237227	Sum of GTIs [s]
livetime	3255.2489372193	Livetime [s]
ontime0	1508.976408653	Sum of GTIs [s]
ontime1	1538.758359015	Sum of GTIs [s]
ontime2	1439.307178311	Sum of GTIs [s]
ontime3	1459.1480886787	Sum of GTIs [s]
ontime6	1578.3582193702	Sum of GTIs [s]
ontime7	3268.7434237227	Sum of GTIs [s]
l2events	895599	Number of level 2 events

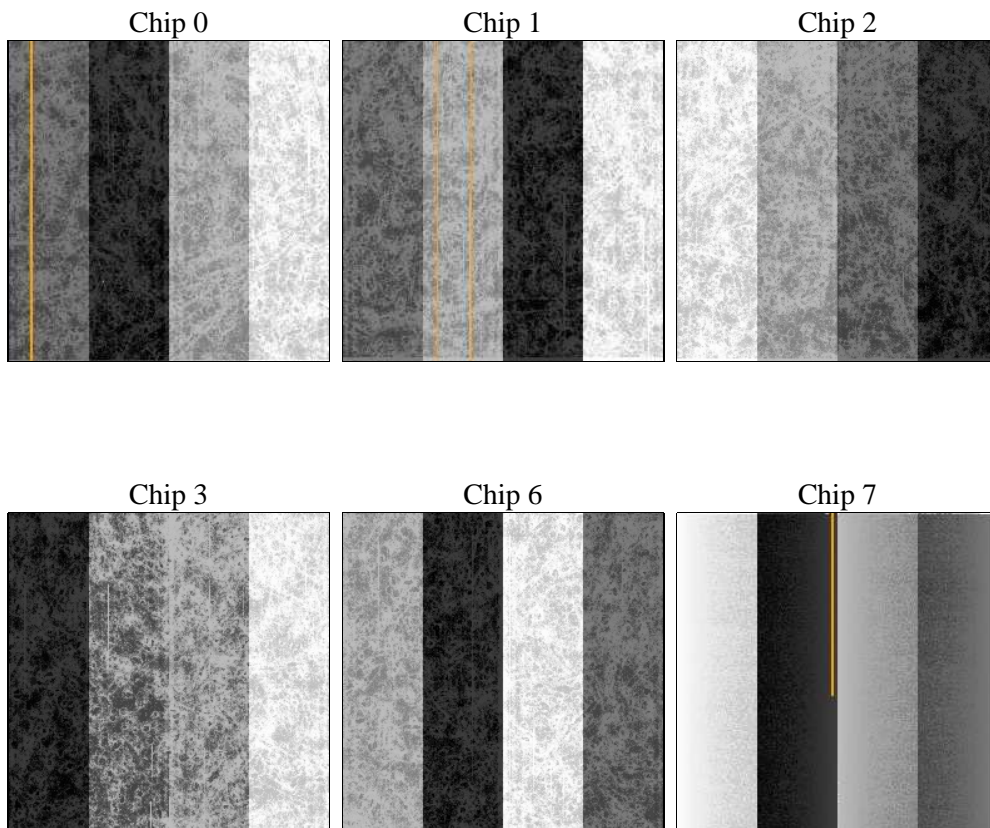
2 OBI

2.1 OBI

2.1.1 Images



2.1.2 Bias



2.1.3 Parameters

obi_num	0	Obi number	sched_exp_time	0.0	[s] Scheduled observation exposure time
ascdsver	8.4.5	Processing system revision	ontime	3268.7434237227	Sum of GTIs [s]
caldsver	4.5.1.1	 	ontime0	1508.976408653	Sum of GTIs [s]
date	2012-08-22T01:26:31	Date and time of file creation	ontime1	1538.758359015	Sum of GTIs [s]
revision	4	Processing version of data	ontime2	1439.307178311	Sum of GTIs [s]
			ontime3	1459.1480886787	Sum of GTIs [s]
			ontime6	1578.3582193702	Sum of GTIs [s]
			ontime7	3268.7434237227	Sum of GTIs [s]
			l1events	1047763	Number of level 1 events

2.1.4 Events

	ccd 0	ccd 1	ccd 2	ccd 3	ccd 6	ccd 7		ccd 0	ccd 1	ccd 2	ccd 3	ccd 6	ccd 7
level 1 events	142339	144703	138693	140381	157527	324120	grade 0 events	68885	70197	66937	68191	74909	80968
rejected events	17963	17697	19073	18368	19703	21530		48%	48%	48%	48%	47%	24%
rejected %	12%	12%	13%	13%	12%	6%	grade 1 events	1038	961	966	1013	1042	404
								0%	0%	0%	0%	0%	0%
							grade 2 events	21937	22682	21120	21662	24103	68567
								15%	15%	15%	15%	15%	21%
							grade 3 events	8127	8275	7810	8053	8901	31918
								5%	5%	5%	5%	5%	9%
							grade 4 events	8208	8402	7737	8047	8903	31894
								5%	5%	5%	5%	5%	9%
							grade 5 events	1490	1533	1444	1587	1664	4537
								1%	1%	1%	1%	1%	1%
							grade 6 events	18927	19073	17657	17785	22690	94701
								13%	13%	12%	12%	14%	29%
							grade 7 events	13727	13580	15022	14043	15315	11131
								9%	9%	10%	10%	9%	3%

2.2 Compared Parameters

Parameter	Planned	Actual	Parameter	Planned	Actual
Instrument	ACIS	ACIS	Obspar format version number	7	7
Detector	ACIS-012367	ACIS-012367	Obspar file type	PREDICTED	ACTUAL
Grating	NONE	NONE	Obspar update status	NONE	UPDATED
Data mode	FAINT	FAINT	On-chip summing requested	N	N
Observation mode	SECONDARY	SECONDARY	Subarray requested	NONE	NONE
[deg] Pointing RA	0	110.1090912938487	Alternating exposures requested	N	N
[deg] Pointing Dec	0	-31.43305778286922	[s] Primary exposure time	9.9	9.9
[deg] Pointing Roll	0.0	330.1730253024947			
[mm] SIM focus pos	-0.782348	-1.428180813131781			
[mm] SIM defocus	0	0.1051558262725154			
[mm] SIM translation stage pos	-233.592463	250.466033080201			
[mm] SIM translation stage offset	0	-0.01005468664627074			
[s] Observation start time (MET)	65779144.727253	65779143.958726			
Observation start date	2000-02-01T07:59:05	2000-02-01T07:59:03			
[s] Observation end time (MET)	65786444.777519	65786444.008992			
Observation end date	2000-02-01T10:00:45	2000-02-01T10:00:44			
Read mode	TIMED	TIMED			

2.3 Star Slots

2.4 FID Slots

A Summary

A.1 Status

V&V Scientist	Jen Lauer
V&V Date (YYYY-MM-DD)	2012.08.22
V&V Edition	1
V&V Disposition and Status	OK
V&V Charge Time	3.2687434237227

A.2 Comments