

V&V Reference Report

L2 ASCDS Version : 8.4.5

Observation 62181 - L2 Version 4
Chandra X-Ray Center

L2 Processing Date : Aug 22 2012

Contents

1	Front	2
2	OBI	3
2.1	OBI	3
2.1.1	Images	3
2.1.2	Bias	3
2.1.3	Parameters	4
2.1.4	Events	4
2.2	Compared Parameters	5
2.3	Star Slots	6
2.4	FID Slots	6
A	Summary	7
A.1	Status	7
A.2	Comments	7

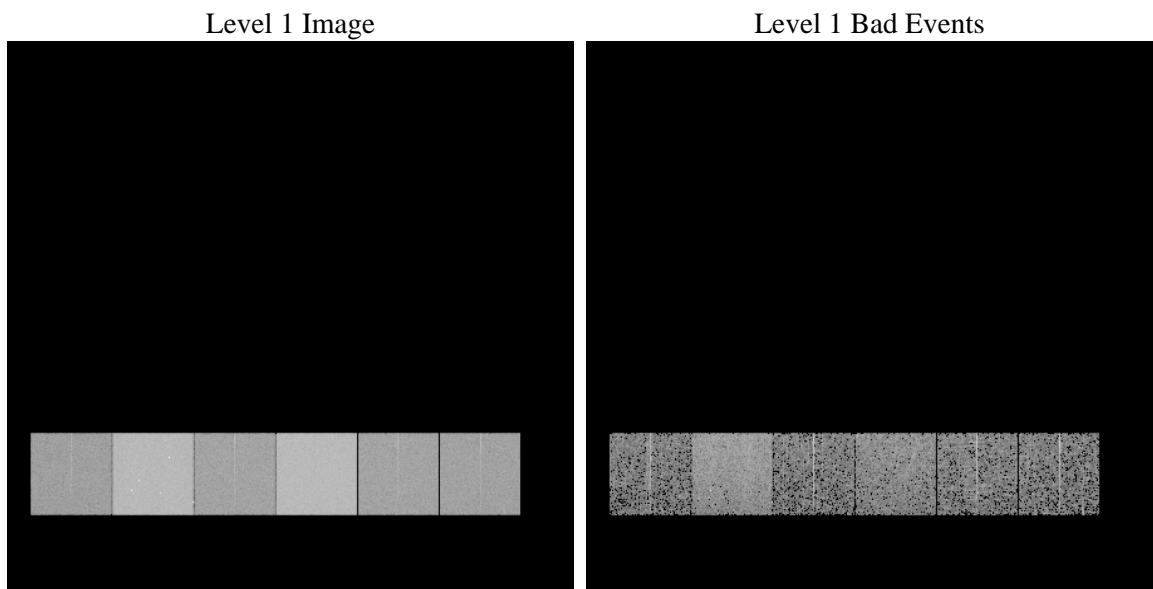
1 Front

seq_num	 	Sequence number
obs_id	62181	Observation id
title	ACIS-456789 diagnostics	Proposal title
observer	CHANDRA engineering request/realtime commanding	Principal investig
object	 	Source name
dtcycle	0	
cycle	P	events from which exps? Prim/Second/Both
ra_targ	0.0	Observer's specified target RA [deg]
dec_targ	0.0	Observer's specified target Dec [deg]
ra_nom	52.826359859911	Nominal RA [deg]
dec_nom	43.882886871499	Nominal Dec [deg]
roll_nom	280.51396482306	Nominal Roll [deg]
revision	4	Processing version of data
ontime	2877.0397238433	Sum of GTIs [s]
livetime	2840.6089145147	Livetime [s]
ontime4	1157.0498759151	Sum of GTIs [s]
ontime5	3087.6625643075	Sum of GTIs [s]
ontime6	1264.0042559803	Sum of GTIs [s]
ontime7	2877.0397238433	Sum of GTIs [s]
ontime8	1246.6391034201	Sum of GTIs [s]
ontime9	1208.906486094	Sum of GTIs [s]
l2events	923436	Number of level 2 events

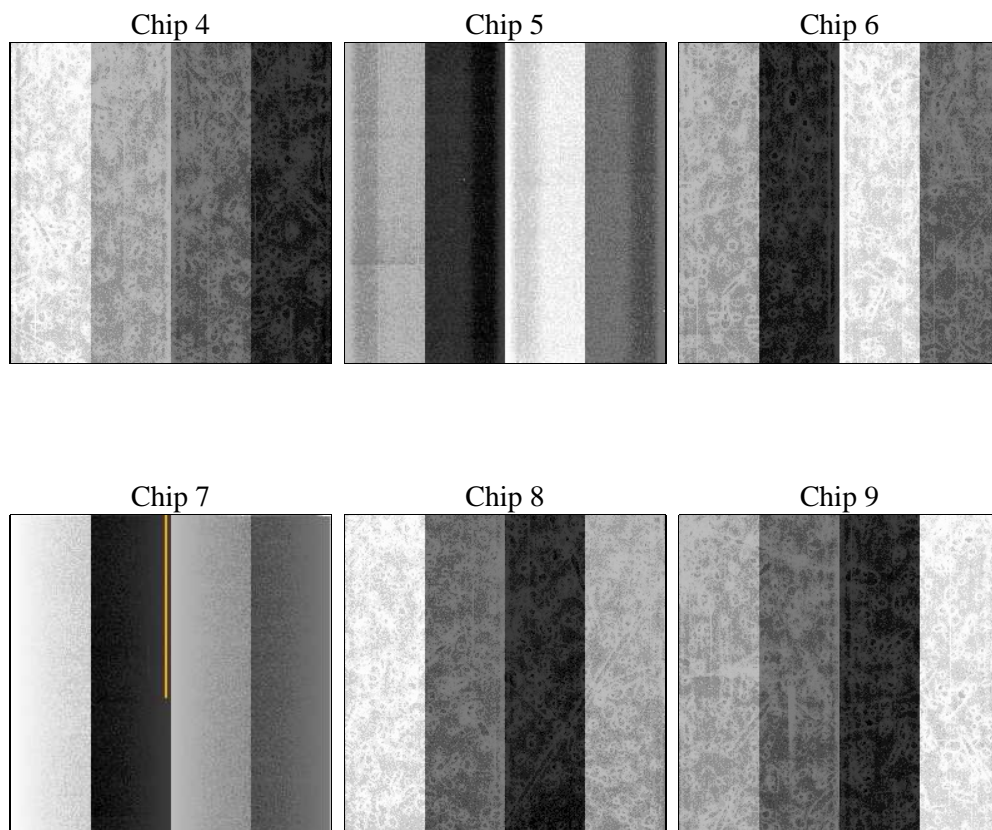
2 OBI

2.1 OBI

2.1.1 Images



2.1.2 Bias



2.1.3 Parameters

obi_num	0	Obi number	sched_exp_time	0.0	[s] Scheduled observation exposure time
ascdsver	8.4.5	Processing system revision	ontime	2877.0397238433	Sum of GTIs [s]
caldsver	4.5.1.1	 	ontime4	1157.0498759151	Sum of GTIs [s]
date	2012-08-22T13:52:16	Date and time of file creation	ontime5	3087.6625643075	Sum of GTIs [s]
revision	4	Processing version of data	ontime6	1264.0042559803	Sum of GTIs [s]
			ontime7	2877.0397238433	Sum of GTIs [s]
			ontime8	1246.6391034201	Sum of GTIs [s]
			ontime9	1208.906486094	Sum of GTIs [s]
			l1events	1064590	Number of level 1 events

2.1.4 Events

	ccd 4	ccd 5	ccd 6	ccd 7	ccd 8	ccd 9		ccd 4	ccd 5	ccd 6	ccd 7	ccd 8	ccd 9
level 1 events	113222	278672	131520	287426	131712	122038	grade 0 events	56642	63139	64337	69058	64678	59446
rejected events	13316	27654	13501	17938	14825	13261		50%	22%	48%	24%	49%	48%
rejected %	11%	9%	10%	6%	11%	10%	grade 1 events	412	609	394	205	426	344
								0%	0%	0%	0%	0%	0%
							grade 2 events	17531	88540	20355	60078	20432	19255
								15%	31%	15%	20%	15%	15%
							grade 3 events	6067	16285	7211	27796	7348	6802
								5%	5%	5%	9%	5%	5%
							grade 4 events	6137	16136	7360	27208	7296	6759
								5%	5%	5%	9%	5%	5%
							grade 5 events	848	5602	1071	4006	1153	995
								0%	2%	0%	1%	0%	0%
							grade 6 events	13529	66918	18756	85348	17133	16515
								11%	24%	14%	29%	13%	13%
							grade 7 events	12056	21443	12036	13727	13246	11922
								10%	7%	9%	4%	10%	9%

2.2 Compared Parameters

Parameter	Planned	Actual	Parameter	Planned	Actual
Instrument	ACIS	ACIS	Obspar format version number	7	7
Detector	ACIS-456789	ACIS-456789	Obspar file type	PREDICTED	ACTUAL
Grating	NONE	NONE	Obspar update status	NONE	UPDATED
Data mode	FAINT	FAINT	On-chip summing requested	N	N
Observation mode	SECONDARY	SECONDARY	Subarray requested	NONE	NONE
[deg] Pointing RA	0	52.82635985991127	Alternating exposures requested	N	N
[deg] Pointing Dec	0	43.88288687149871	[s] Primary exposure time	3.2	3.2
[deg] Pointing Roll	0.0	280.5139648230615			
[mm] SIM focus pos	-0.684267	-0.6828225247311905			
[mm] SIM defocus	0	0.8505141146731063			
[mm] SIM translation stage pos	-190.132523	250.466033080201			
[mm] SIM translation stage offset	0	-0.01005468664627074			
[s] Observation start time (MET)	66471481.002406	66471480.233936			
Observation start date	2000-02-09T08:18:01	2000-02-09T08:18:00			
[s] Observation end time (MET)	66517942.204099	66517941.435629			
Observation end date	2000-02-09T21:12:22	2000-02-09T21:12:21			
Read mode	TIMED	TIMED			

2.3 Star Slots

2.4 FID Slots

A Summary

A.1 Status

V&V Scientist	Jen Lauer
V&V Date (YYYY-MM-DD)	2012.08.23
V&V Edition	1
V&V Disposition and Status	OK
V&V Charge Time	2.8770397238433

A.2 Comments