

V&V Reference Report

L2 ASCDS Version : 8.4.5

Observation 62166 - L2 Version 4
Chandra X-Ray Center

L2 Processing Date : Aug 22 2012

Contents

1	Front	2
2	OBI	3
2.1	OBI	3
2.1.1	Images	3
2.1.2	Bias	3
2.1.3	Parameters	4
2.1.4	Events	4
2.2	Compared Parameters	5
2.3	Star Slots	6
2.4	FID Slots	6
A	Summary	7
A.1	Status	7
A.2	Comments	7

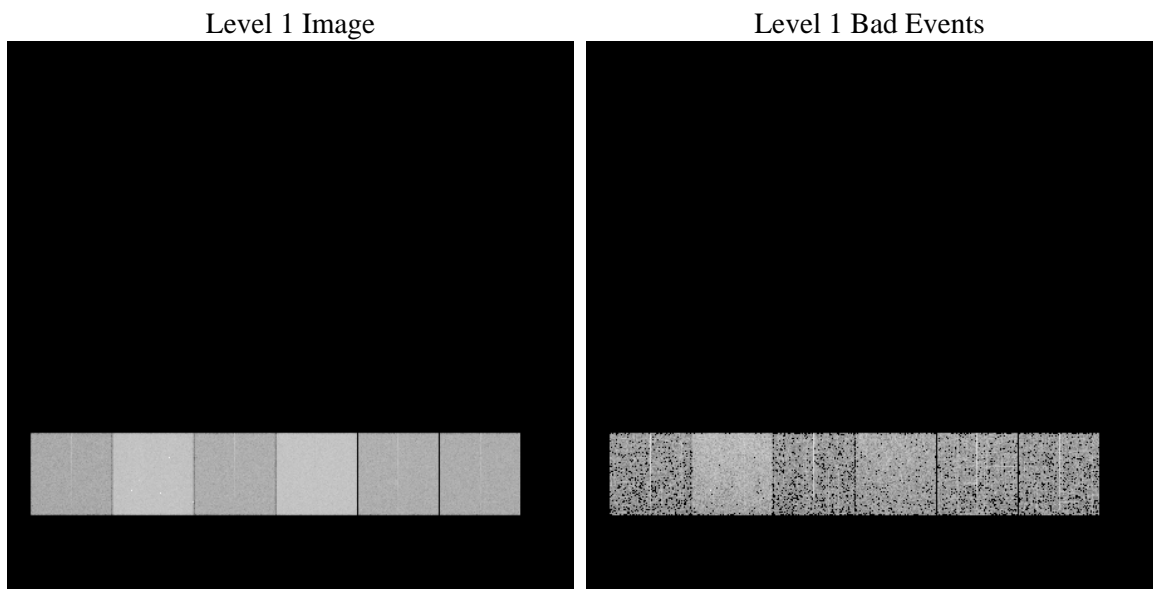
1 Front

seq_num	 	Sequence number
obs_id	62166	Observation id
title	ACIS-456789 diagnostics	Proposal title
observer	CHANDRA engineering request/realtime commanding	Principal investig
object	 	Source name
dtcycle	0	
cycle	P	events from which exps? Prim/Second/Both
ra_targ	0.0	Observer's specified target RA [deg]
dec_targ	0.0	Observer's specified target Dec [deg]
ra_nom	108.03119201098	Nominal RA [deg]
dec_nom	-25.008034705532	Nominal Dec [deg]
roll_nom	310.30996642081	Nominal Roll [deg]
revision	4	Processing version of data
ontime	2894.2405173257	Sum of GTIs [s]
livetime	2857.5919011929	Livetime [s]
ontime4	1153.8088659123	Sum of GTIs [s]
ontime5	3110.4139142856	Sum of GTIs [s]
ontime6	1279.1955936402	Sum of GTIs [s]
ontime7	2894.2405173257	Sum of GTIs [s]
ontime8	1283.4503863826	Sum of GTIs [s]
ontime9	1254.2810761854	Sum of GTIs [s]
l2events	931290	Number of level 2 events

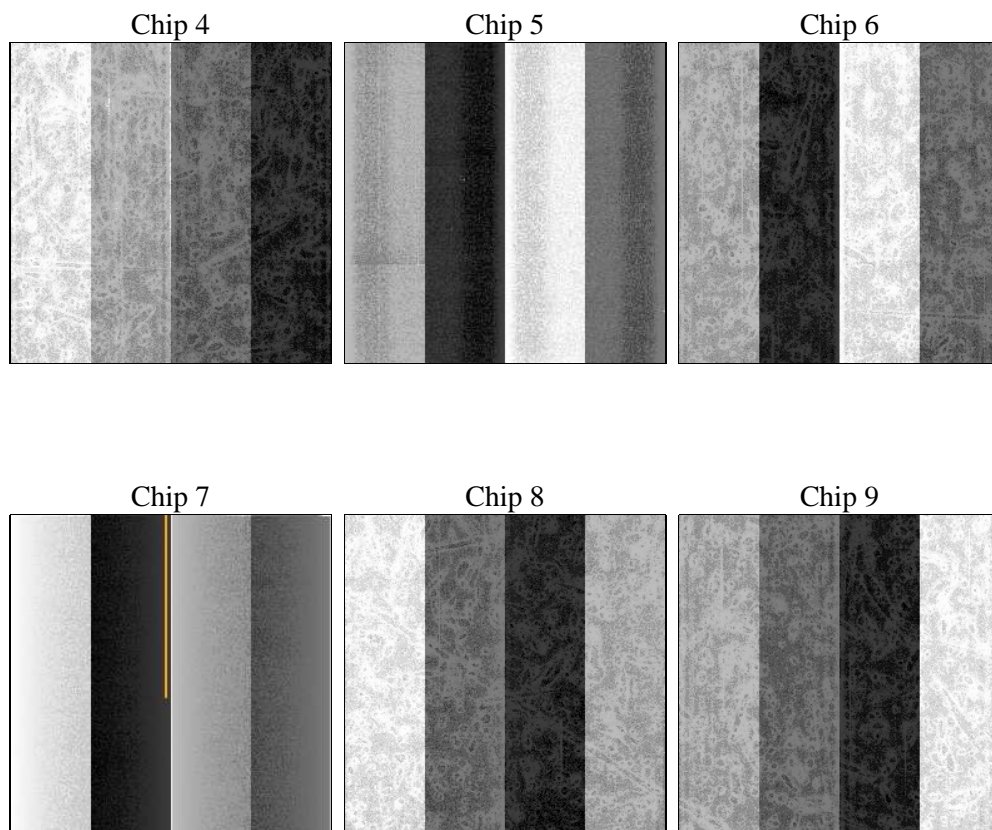
2 OBI

2.1 OBI

2.1.1 Images



2.1.2 Bias



2.1.3 Parameters

obi_num	0	Obi number	sched_exp_time	0.0	[s] Scheduled observation exposure time
ascdsver	8.4.5	Processing system revision	ontime	2894.2405173257	Sum of GTIs [s]
caldsver	4.5.1.1	 	ontime4	1153.8088659123	Sum of GTIs [s]
date	2012-08-22T19:13:43	Date and time of file creation	ontime5	3110.4139142856	Sum of GTIs [s]
revision	4	Processing version of data	ontime6	1279.1955936402	Sum of GTIs [s]
			ontime7	2894.2405173257	Sum of GTIs [s]
			ontime8	1283.4503863826	Sum of GTIs [s]
			ontime9	1254.2810761854	Sum of GTIs [s]
			l1events	1065439	Number of level 1 events

2.1.4 Events

	ccd 4	ccd 5	ccd 6	ccd 7	ccd 8	ccd 9		ccd 4	ccd 5	ccd 6	ccd 7	ccd 8	ccd 9
level 1 events	112265	275870	132324	285366	134600	125014	grade 0 events	56281	64888	65442	69571	65603	61801
rejected events	12621	25522	12401	16411	14880	12724		50%	23%	49%	24%	48%	49%
rejected %	11%	9%	9%	5%	11%	10%	grade 1 events	406	214	377	177	367	389
								0%	0%	0%	0%	0%	0%
							grade 2 events	17449	86145	20737	59824	21034	19633
								15%	31%	15%	20%	15%	15%
							grade 3 events	6205	16877	7359	27714	7633	6920
								5%	6%	5%	9%	5%	5%
							grade 4 events	6245	16911	7402	27042	7518	7047
								5%	6%	5%	9%	5%	5%
							grade 5 events	813	5404	999	3771	1091	989
								0%	1%	0%	1%	0%	0%
							grade 6 events	13464	65527	18983	84804	17932	16889
								11%	23%	14%	29%	13%	13%
							grade 7 events	11402	19904	11025	12463	13422	11346
								10%	7%	8%	4%	9%	9%

2.2 Compared Parameters

Parameter	Planned	Actual	Parameter	Planned	Actual
Instrument	ACIS	ACIS	Obspar format version number	7	7
Detector	ACIS-456789	ACIS-456789	Obspar file type	PREDICTED	ACTUAL
Grating	NONE	NONE	Obspar update status	NONE	UPDATED
Data mode	FAINT	FAINT	On-chip summing requested	N	N
Observation mode	SECONDARY	SECONDARY	Subarray requested	NONE	NONE
[deg] Pointing RA	0	108.0311920109761	Alternating exposures requested	N	N
[deg] Pointing Dec	0	-25.00803470553157	[s] Primary exposure time	0.000000	3.2
[deg] Pointing Roll	0.0	310.3099664208119			
[mm] SIM focus pos	-0.684267	-1.428180813131781			
[mm] SIM defocus	0	0.1051558262725154			
[mm] SIM translation stage pos	-190.132523	250.466033080201			
[mm] SIM translation stage offset	0	-0.01005468664627074			
[s] Observation start time (MET)	66973538.321	66973537.552238			
Observation start date	2000-02-15T03:45:38	2000-02-15T03:45:37			
[s] Observation end time (MET)	66980838.371	66980837.602504			
Observation end date	2000-02-15T05:47:18	2000-02-15T05:47:17			
Read mode	TIMED	TIMED			

2.3 Star Slots

2.4 FID Slots

A Summary

A.1 Status

V&V Scientist	Jen Lauer
V&V Date (YYYY-MM-DD)	2012.08.23
V&V Edition	1
V&V Disposition and Status	OK
V&V Charge Time	2.8942405173257

A.2 Comments