

V&V Reference Report

L2 ASCDS Version : 8.4.5

Observation 62134 - L2 Version 4
Chandra X-Ray Center

L2 Processing Date : Aug 24 2012

Contents

1	Front	2
2	OBI	3
2.1	OBI	3
2.1.1	Images	3
2.1.2	Bias	3
2.1.3	Parameters	4
2.1.4	Events	4
2.2	Compared Parameters	5
2.3	Star Slots	6
2.4	FID Slots	6
A	Summary	7
A.1	Status	7
A.2	Comments	7

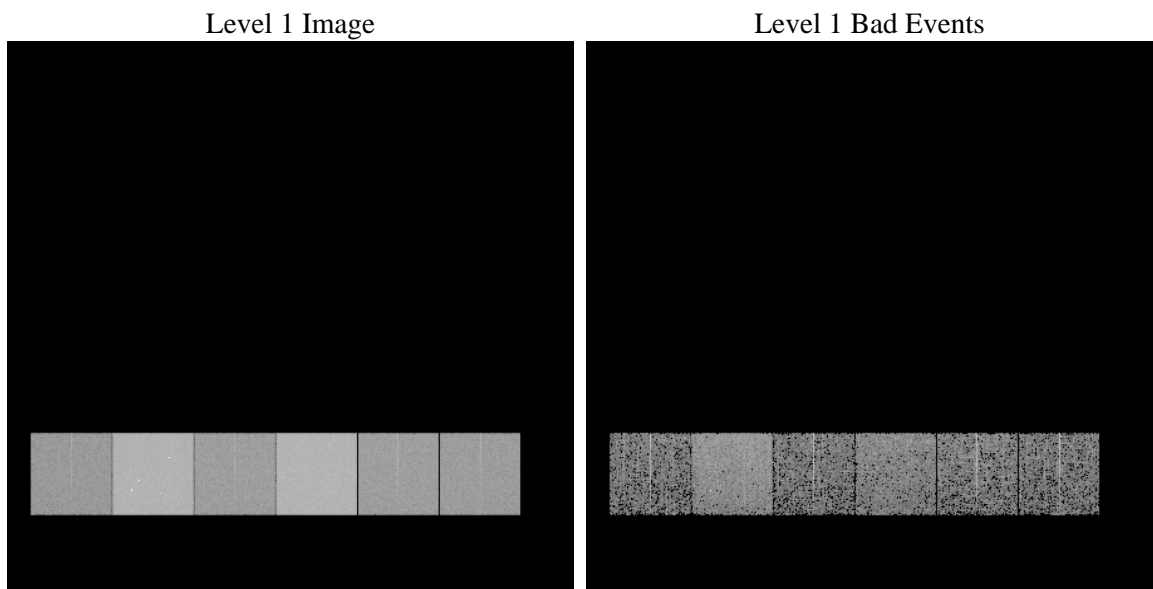
1 Front

seq_num	 	Sequence number
obs_id	62134	Observation id
title	ACIS-456789 diagnostics	Proposal title
observer	CHANDRA engineering request/realtime commanding	Principal investig
object	 	Source name
dtcycle	0	
cycle	P	events from which exps? Prim/Second/Both
ra_targ	0.0	Observer's specified target RA [deg]
dec_targ	0.0	Observer's specified target Dec [deg]
ra_nom	281.50426720694	Nominal RA [deg]
dec_nom	76.982170102309	Nominal Dec [deg]
roll_nom	65.548398531506	Nominal Roll [deg]
revision	4	Processing version of data
ontime	2971.0148475915	Sum of GTIs [s]
livetime	2933.3940686609	Livetime [s]
ontime4	1176.4960211366	Sum of GTIs [s]
ontime5	3171.9143185467	Sum of GTIs [s]
ontime6	1296.4143911153	Sum of GTIs [s]
ontime7	2971.0148475915	Sum of GTIs [s]
ontime8	1308.2055980861	Sum of GTIs [s]
ontime9	1270.4861808866	Sum of GTIs [s]
l2events	927135	Number of level 2 events

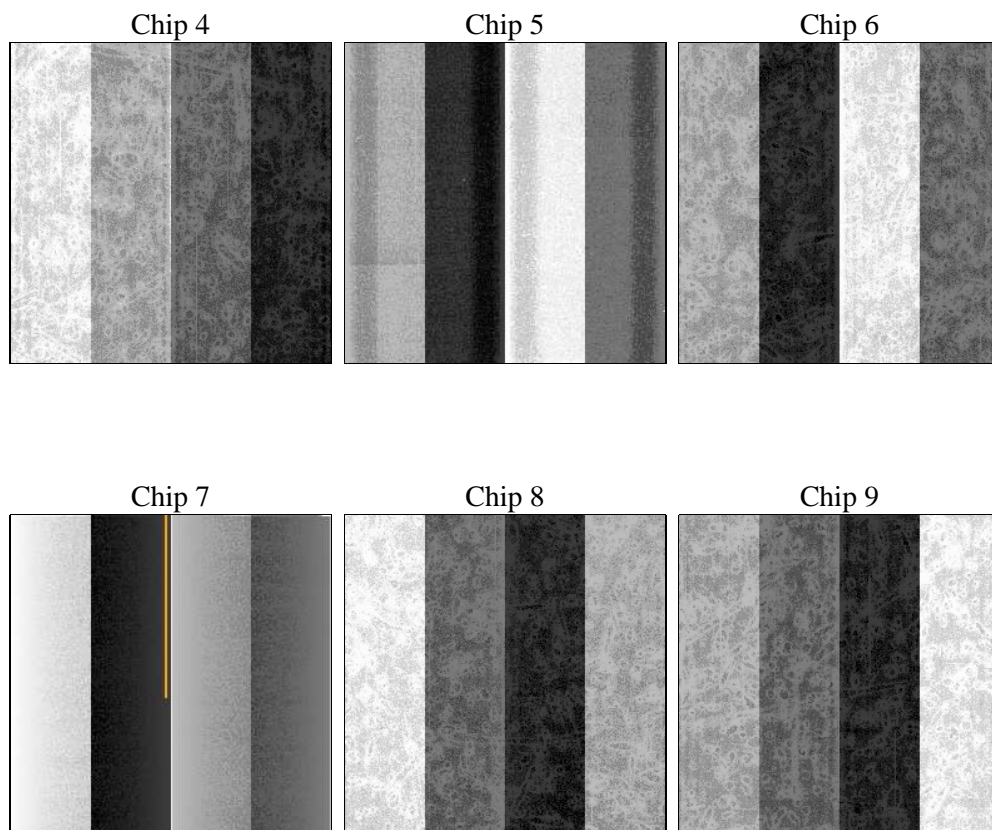
2 OBI

2.1 OBI

2.1.1 Images



2.1.2 Bias



2.1.3 Parameters

obi_num	0	Obi number	sched_exp_time	0.0	[s] Scheduled observation exposure time
ascdsver	8.4.5	Processing system revision	ontime	2971.0148475915	Sum of GTIs [s]
caldsver	4.5.1.1	 	ontime4	1176.4960211366	Sum of GTIs [s]
date	2012-08-24T05:26:37	Date and time of file creation	ontime5	3171.9143185467	Sum of GTIs [s]
revision	4	Processing version of data	ontime6	1296.4143911153	Sum of GTIs [s]
			ontime7	2971.0148475915	Sum of GTIs [s]
			ontime8	1308.2055980861	Sum of GTIs [s]
			ontime9	1270.4861808866	Sum of GTIs [s]
			l1events	1063791	Number of level 1 events

2.1.4 Events

	ccd 4	ccd 5	ccd 6	ccd 7	ccd 8	ccd 9		ccd 4	ccd 5	ccd 6	ccd 7	ccd 8	ccd 9
level 1 events	112278	276848	131448	285944	133172	124101	grade 0 events	55989	64781	64800	69296	65487	61202
rejected events	13180	26319	12688	16668	14511	12538		49%	23%	49%	24%	49%	49%
rejected %	11%	9%	9%	5%	10%	10%	grade 1 events	383	178	387	201	375	349
								0%	0%	0%	0%	0%	0%
							grade 2 events	17521	86892	20399	59456	20719	19611
								15%	31%	15%	20%	15%	15%
							grade 3 events	6105	16850	7412	27499	7441	6940
								5%	6%	5%	9%	5%	5%
							grade 4 events	6115	16531	7344	27367	7542	6971
								5%	5%	5%	9%	5%	5%
							grade 5 events	830	5399	1014	3925	1122	982
								0%	1%	0%	1%	0%	0%
							grade 6 events	13368	65475	18805	85658	17472	16839
								11%	23%	14%	29%	13%	13%
							grade 7 events	11967	20742	11287	12542	13014	11207
								10%	7%	8%	4%	9%	9%

2.2 Compared Parameters

Parameter	Planned	Actual
Instrument	ACIS	ACIS
Detector	ACIS-456789	ACIS-456789
Grating	NONE	NONE
Data mode	FAINT	FAINT
Observation mode	SECONDARY	SECONDARY
[deg] Pointing RA	0	281.5042672069412
[deg] Pointing Dec	0	76.9821701023092
[deg] Pointing Roll	0.0	65.54839853150644
[mm] SIM focus pos	-0.684267	-0.6828225247311905
[mm] SIM defocus	0	0.8505141146731063
[mm] SIM translation stage pos	-190.132523	250.466033080201
[mm] SIM translation stage offset	0	-0.01005468664627074
[s] Observation start time (MET)	68798378.741	68798377.97272401
Observation start date	2000-03-07T06:39:39	2000-03-07T06:39:37
[s] Observation end time (MET)	68805678.79099999	68805678.02299
Observation end date	2000-03-07T08:41:19	2000-03-07T08:41:18
Read mode	TIMED	TIMED

Parameter	Planned	Actual
Obspar format version number	7	7
Obspar file type	PREDICTED	ACTUAL
Obspar update status	NONE	UPDATED
On-chip summing requested	N	N
Subarray requested	NONE	NONE
Alternating exposures requested	N	N
[s] Primary exposure time	0.000000	3.2

2.3 Star Slots

2.4 FID Slots

A Summary

A.1 Status

V&V Scientist	Jen Lauer
V&V Date (YYYY-MM-DD)	2012.08.24
V&V Edition	1
V&V Disposition and Status	OK
V&V Charge Time	2.9710148475915

A.2 Comments