

V&V Reference Report

L2 ASCDS Version : 8.4.5

Observation 62123 - L2 Version 4
Chandra X-Ray Center

L2 Processing Date : Aug 24 2012

Contents

1	Front	2
2	OBI	3
2.1	OBI	3
2.1.1	Images	3
2.1.2	Bias	3
2.1.3	Parameters	4
2.1.4	Events	4
2.2	Compared Parameters	5
2.3	Star Slots	6
2.4	FID Slots	6
A	Summary	7
A.1	Status	7
A.2	Comments	7

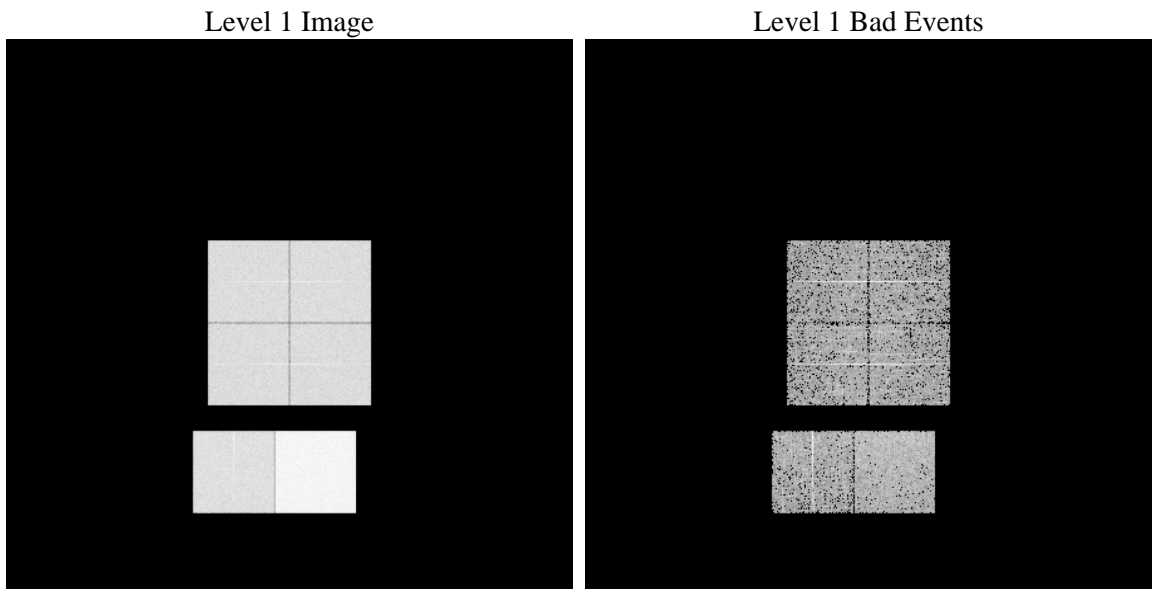
1 Front

seq_num	 	Sequence number
obs_id	62123	Observation id
title	ACIS-012367 diagnostics	Proposal title
observer	CHANDRA engineering request/realtime commanding	Principal investig
object	 	Source name
dtcycle	0	
cycle	P	events from which exps? Prim/Second/Both
ra_targ	0.0	Observer's specified target RA [deg]
dec_targ	0.0	Observer's specified target Dec [deg]
ra_nom	88.834637428053	Nominal RA [deg]
dec_nom	-60.023087385546	Nominal Dec [deg]
roll_nom	274.62923880011	Nominal Roll [deg]
revision	4	Processing version of data
ontime	3523.1425828785	Sum of GTIs [s]
livetime	3478.5304301123	Livetime [s]
ontime0	1490.9895092547	Sum of GTIs [s]
ontime1	1497.3590004295	Sum of GTIs [s]
ontime2	1419.6045494527	Sum of GTIs [s]
ontime3	1422.8151604086	Sum of GTIs [s]
ontime6	1565.4208103418	Sum of GTIs [s]
ontime7	3523.1425828785	Sum of GTIs [s]
l2events	927759	Number of level 2 events

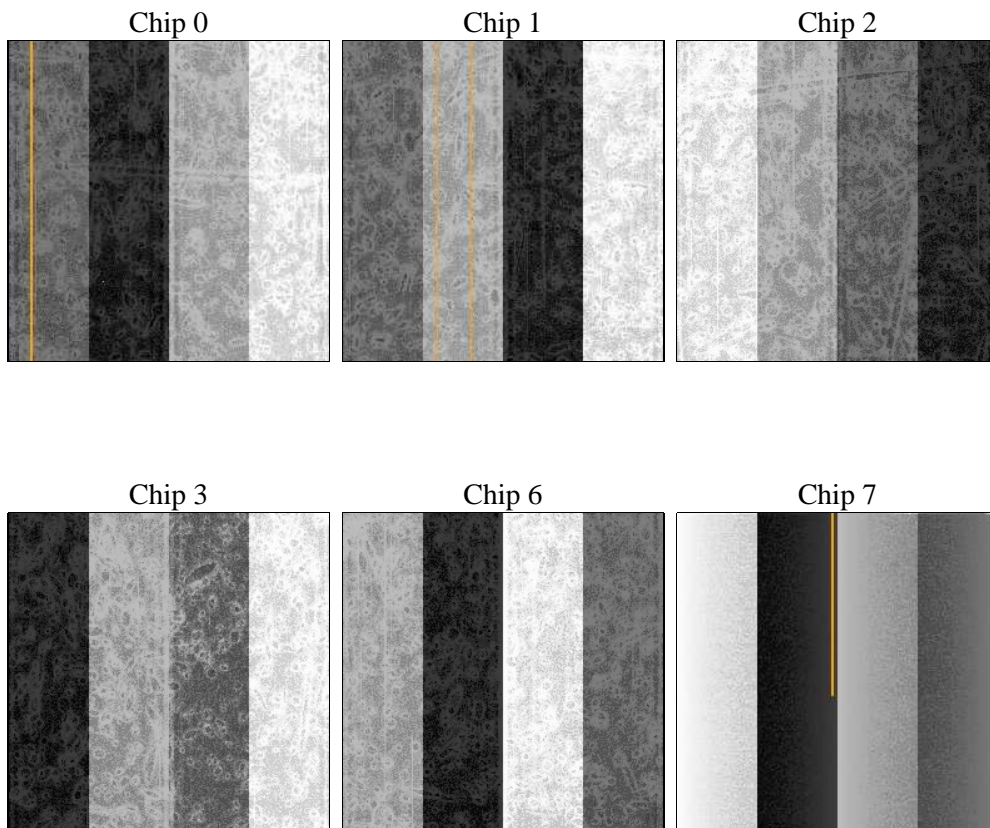
2 OBI

2.1 OBI

2.1.1 Images



2.1.2 Bias



2.1.3 Parameters

obi_num	0	Obi number	sched_exp_time	0.0	[s] Scheduled observation exposure time
ascdsver	8.4.5	Processing system revision	ontime	3523.1425828785	Sum of GTIs [s]
caldbver	4.5.1.1	 	ontime0	1490.9895092547	Sum of GTIs [s]
date	2012-08-24T10:22:14	Date and time of file creation	ontime1	1497.3590004295	Sum of GTIs [s]
revision	4	Processing version of data	ontime2	1419.6045494527	Sum of GTIs [s]
			ontime3	1422.8151604086	Sum of GTIs [s]
			ontime6	1565.4208103418	Sum of GTIs [s]
			ontime7	3523.1425828785	Sum of GTIs [s]
			l1events	1061283	Number of level 1 events

2.1.4 Events

	ccd 0	ccd 1	ccd 2	ccd 3	ccd 6	ccd 7		ccd 0	ccd 1	ccd 2	ccd 3	ccd 6	ccd 7
level 1 events	142255	143627	139432	139397	158912	337660	grade 0 events	71249	71625	69750	70584	78504	82486
rejected events	13618	13999	15465	15001	16224	20808		50%	49%	50%	50%	49%	24%
rejected %	9%	9%	11%	10%	10%	6%	grade 1 events	443	437	427	457	462	230
								0%	0%	0%	0%	0%	0%
							grade 2 events	23005	22886	21906	21777	24697	71199
								16%	15%	15%	15%	15%	21%
							grade 3 events	8169	8346	7791	7899	8876	32657
								5%	5%	5%	5%	5%	9%
							grade 4 events	8264	8275	7759	7912	8860	32676
								5%	5%	5%	5%	5%	9%
							grade 5 events	1031	1026	946	1022	1226	4321
								0%	0%	0%	0%	0%	1%
							grade 6 events	18731	19057	17683	17127	22664	99546
								13%	13%	12%	12%	14%	29%
							grade 7 events	11363	11975	13170	12619	13623	14545
								7%	8%	9%	9%	8%	4%

2.2 Compared Parameters

Parameter	Planned	Actual	Parameter	Planned	Actual
Instrument	ACIS	ACIS	Obspar format version number	7	7
Detector	ACIS-012367	ACIS-012367	Obspar file type	PREDICTED	ACTUAL
Grating	NONE	NONE	Obspar update status	NONE	UPDATED
Data mode	FAINT	FAINT	On-chip summing requested	N	N
Observation mode	SECONDARY	SECONDARY	Subarray requested	NONE	NONE
[deg] Pointing RA	0	88.83463742805314	Alternating exposures requested	N	N
[deg] Pointing Dec	0	-60.02308738554555	[s] Primary exposure time	3.2	3.2
[deg] Pointing Roll	0.0	274.6292388001093			
[mm] SIM focus pos	-0.782348	-0.6828225247311905			
[mm] SIM defocus	0	0.8505141146731063			
[mm] SIM translation stage pos	-233.592463	250.4635187648994			
[mm] SIM translation stage offset	0	-0.007540371344731511			
[s] Observation start time (MET)	69434643.414419	69434642.645973			
Observation start date	2000-03-14T15:24:03	2000-03-14T15:24:02			
[s] Observation end time (MET)	69443011.514724	69443010.746279			
Observation end date	2000-03-14T17:43:32	2000-03-14T17:43:30			
Read mode	TIMED	TIMED			

2.3 Star Slots

2.4 FID Slots

A Summary

A.1 Status

V&V Scientist	Jen Lauer
V&V Date (YYYY-MM-DD)	2012.08.27
V&V Edition	1
V&V Disposition and Status	OK
V&V Charge Time	3.5231425828785

A.2 Comments