

V&V Reference Report

L2 ASCDS Version : 8.4.5

Observation 62120 - L2 Version 4
Chandra X-Ray Center

L2 Processing Date : Aug 24 2012

Contents

1	Front	2
2	OBI	3
2.1	OBI	3
2.1.1	Images	3
2.1.2	Bias	3
2.1.3	Parameters	4
2.1.4	Events	4
2.2	Compared Parameters	5
2.3	Star Slots	6
2.4	FID Slots	6
A	Summary	7
A.1	Status	7
A.2	Comments	7

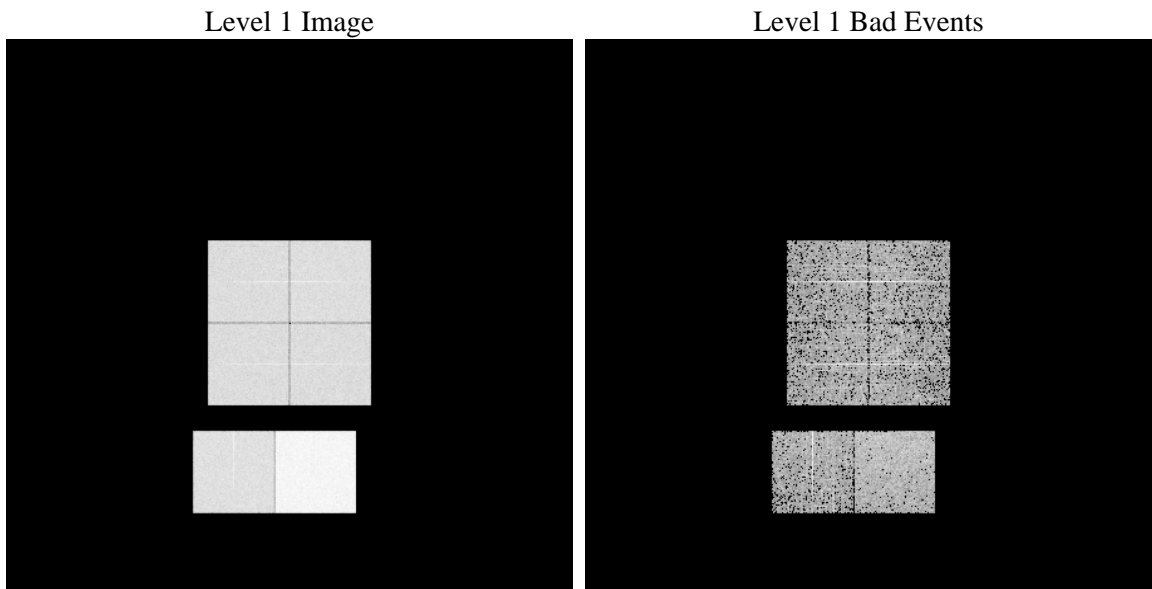
1 Front

seq_num	 	Sequence number
obs_id	62120	Observation id
title	ACIS-012367 diagnostics	Proposal title
observer	CHANDRA engineering request/realtime commanding	Principal investig
object	 	Source name
dtcycle	0	
cycle	P	events from which exps? Prim/Second/Both
ra_targ	0.0	Observer's specified target RA [deg]
dec_targ	0.0	Observer's specified target Dec [deg]
ra_nom	88.837832328049	Nominal RA [deg]
dec_nom	-60.023219754003	Nominal Dec [deg]
roll_nom	274.32110404387	Nominal Roll [deg]
revision	4	Processing version of data
ontime	3513.2662325799	Sum of GTIs [s]
livetime	3468.7791401081	Livetime [s]
ontime0	1484.3947605491	Sum of GTIs [s]
ontime1	1535.3561270088	Sum of GTIs [s]
ontime2	1435.779250443	Sum of GTIs [s]
ontime3	1429.2971405387	Sum of GTIs [s]
ontime6	1597.8310804814	Sum of GTIs [s]
ontime7	3513.2662325799	Sum of GTIs [s]
l2events	934815	Number of level 2 events

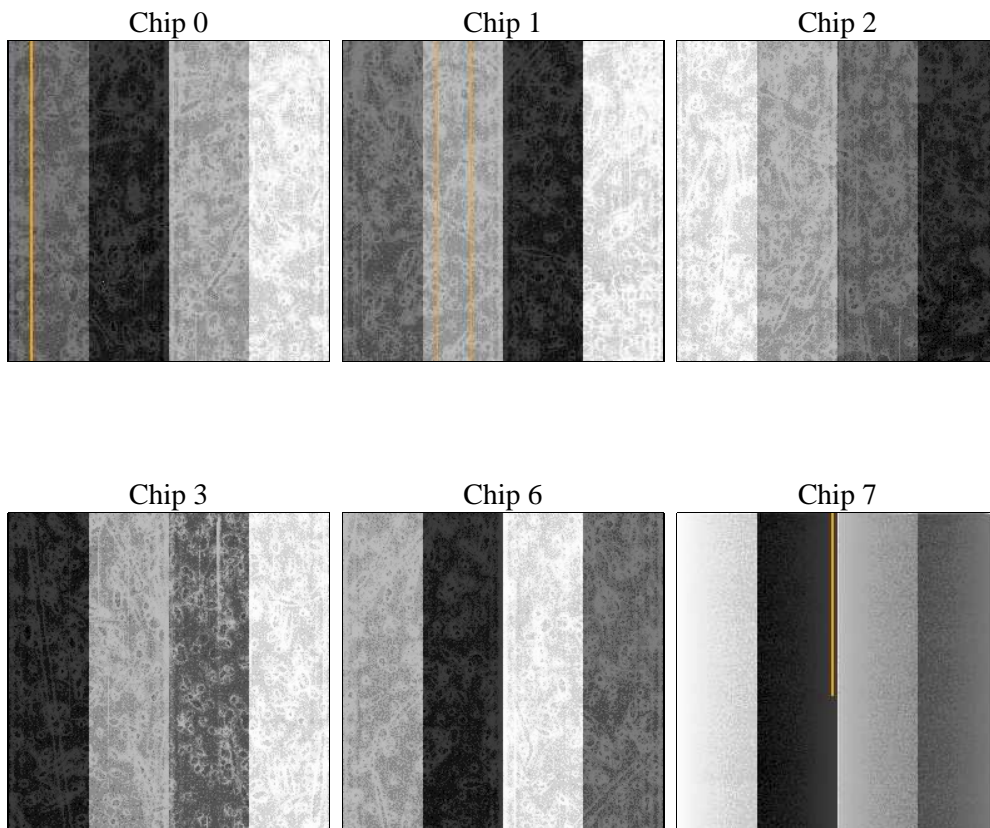
2 OBI

2.1 OBI

2.1.1 Images



2.1.2 Bias



2.1.3 Parameters

obi_num	0	Obi number	sched_exp_time	0.0	[s] Scheduled observation exposure time
ascdsver	8.4.5	Processing system revision	ontime	3513.2662325799	Sum of GTIs [s]
caldsver	4.5.1.1	 	ontime0	1484.3947605491	Sum of GTIs [s]
date	2012-08-24T10:32:16	Date and time of file creation	ontime1	1535.3561270088	Sum of GTIs [s]
revision	4	Processing version of data	ontime2	1435.779250443	Sum of GTIs [s]
			ontime3	1429.2971405387	Sum of GTIs [s]
			ontime6	1597.8310804814	Sum of GTIs [s]
			ontime7	3513.2662325799	Sum of GTIs [s]
			l1events	1062335	Number of level 1 events

2.1.4 Events

	ccd 0	ccd 1	ccd 2	ccd 3	ccd 6	ccd 7		ccd 0	ccd 1	ccd 2	ccd 3	ccd 6	ccd 7
level 1 events	141379	146810	139813	138712	159382	336239	grade 0 events	70927	73441	70002	69783	78862	81513
rejected events	13192	13940	13781	13799	14456	19520		50%	50%	50%	50%	49%	24%
rejected %	9%	9%	9%	9%	9%	5%	grade 1 events	423	418	424	425	432	213
								0%	0%	0%	0%	0%	0%
							grade 2 events	22573	23438	22106	21687	24954	70236
								15%	15%	15%	15%	15%	20%
							grade 3 events	8182	8277	8005	7957	8987	32780
								5%	5%	5%	5%	5%	9%
							grade 4 events	8132	8416	7966	7783	9039	32412
								5%	5%	5%	5%	5%	9%
							grade 5 events	949	1004	1033	1000	1188	4460
								0%	0%	0%	0%	0%	1%
							grade 6 events	18373	19298	17953	17703	23084	99778
								12%	13%	12%	12%	14%	29%
							grade 7 events	11820	12518	12324	12374	12836	14847
								8%	8%	8%	8%	8%	4%

2.2 Compared Parameters

Parameter	Planned	Actual	Parameter	Planned	Actual
Instrument	ACIS	ACIS	Obspar format version number	7	7
Detector	ACIS-012367	ACIS-012367	Obspar file type	PREDICTED	ACTUAL
Grating	NONE	NONE	Obspar update status	NONE	UPDATED
Data mode	FAINT	FAINT	On-chip summing requested	N	N
Observation mode	SECONDARY	SECONDARY	Subarray requested	NONE	NONE
[deg] Pointing RA	0	88.837832328049	Alternating exposures requested	N	N
[deg] Pointing Dec	0	-60.02321975400256	[s] Primary exposure time	0.000000	3.2
[deg] Pointing Roll	0.0	274.3211040438729			
[mm] SIM focus pos	-0.782348	-0.6828225247311905			
[mm] SIM defocus	0	0.8505141146731063			
[mm] SIM translation stage pos	-233.592463	250.4635187648994			
[mm] SIM translation stage offset	0	-0.007540371344731511			
[s] Observation start time (MET)	69491610.866	69491610.098056			
Observation start date	2000-03-15T07:13:31	2000-03-15T07:13:30			
[s] Observation end time (MET)	69498910.917	69498910.148323			
Observation end date	2000-03-15T09:15:11	2000-03-15T09:15:10			
Read mode	TIMED	TIMED			

2.3 Star Slots

2.4 FID Slots

A Summary

A.1 Status

V&V Scientist	Jen Lauer
V&V Date (YYYY-MM-DD)	2012.08.27
V&V Edition	1
V&V Disposition and Status	OK
V&V Charge Time	3.5132662325799

A.2 Comments