

V&V Reference Report

L2 ASCDS Version : 8.4.5

Observation 62118 - L2 Version 4
Chandra X-Ray Center

L2 Processing Date : Aug 24 2012

Contents

1	Front	2
2	OBI	3
2.1	OBI	3
2.1.1	Images	3
2.1.2	Bias	3
2.1.3	Parameters	4
2.1.4	Events	4
2.2	Compared Parameters	5
2.3	Star Slots	6
2.4	FID Slots	6
A	Summary	7
A.1	Status	7
A.2	Comments	7

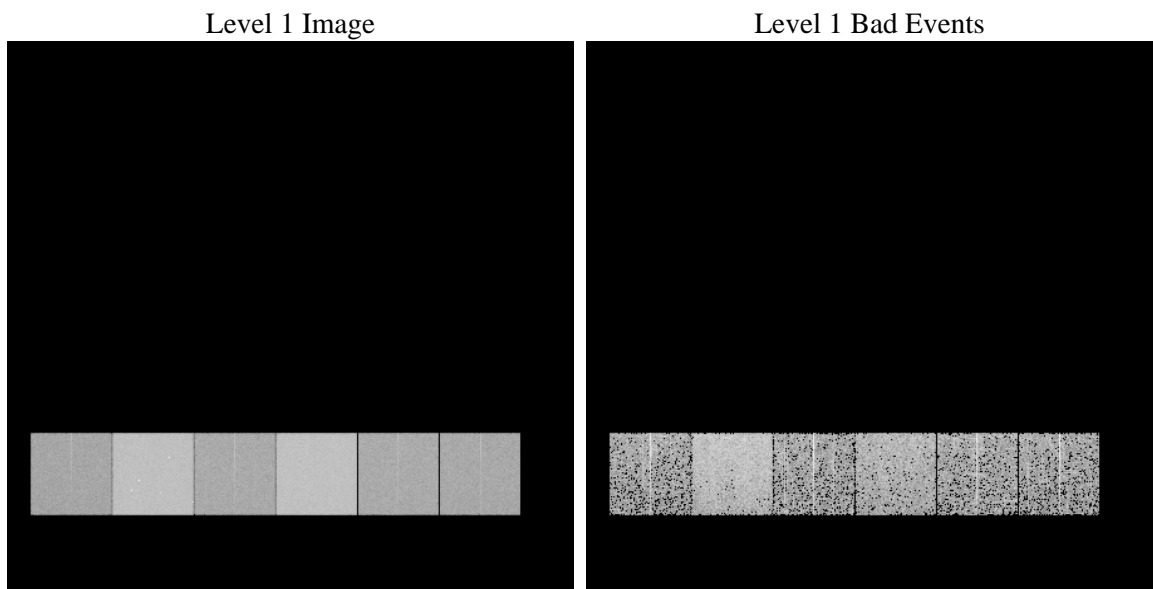
1 Front

seq_num	 	Sequence number
obs_id	62118	Observation id
title	ACIS-456789 diagnostics	Proposal title
observer	CHANDRA engineering request/realtime commanding	Principal investig
object	 	Source name
dtcycle	0	
cycle	P	events from which exps? Prim/Second/Both
ra_targ	0.0	Observer's specified target RA [deg]
dec_targ	0.0	Observer's specified target Dec [deg]
ra_nom	88.218091602901	Nominal RA [deg]
dec_nom	-28.024047770897	Nominal Dec [deg]
roll_nom	271.32583170752	Nominal Roll [deg]
revision	4	Processing version of data
ontime	2990.7269992679	Sum of GTIs [s]
livetime	2952.8566132036	Livetime [s]
ontime4	1199.1834407598	Sum of GTIs [s]
ontime5	3215.0970641375	Sum of GTIs [s]
ontime6	1289.9324707389	Sum of GTIs [s]
ontime7	2990.7269992679	Sum of GTIs [s]
ontime8	1332.0659108758	Sum of GTIs [s]
ontime9	1276.2670672387	Sum of GTIs [s]
l2events	930374	Number of level 2 events

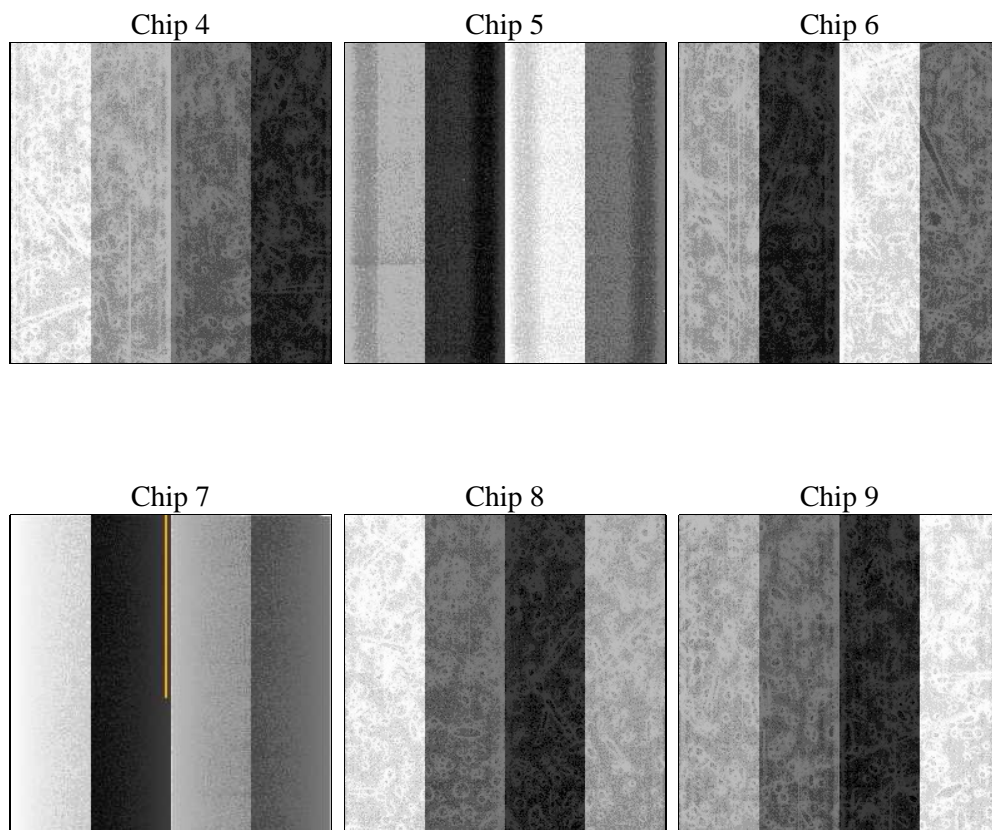
2 OBI

2.1 OBI

2.1.1 Images



2.1.2 Bias



2.1.3 Parameters

obi_num	0	Obi number	sched_exp_time	0.0	[s] Scheduled observation exposure time
ascdsver	8.4.5	Processing system revision	ontime	2990.7269992679	Sum of GTIs [s]
caldsver	4.5.1.1	 	ontime4	1199.1834407598	Sum of GTIs [s]
date	2012-08-24T14:50:39	Date and time of file creation	ontime5	3215.0970641375	Sum of GTIs [s]
revision	4	Processing version of data	ontime6	1289.9324707389	Sum of GTIs [s]
			ontime7	2990.7269992679	Sum of GTIs [s]
			ontime8	1332.0659108758	Sum of GTIs [s]
			ontime9	1276.2670672387	Sum of GTIs [s]
			l1events	1063664	Number of level 1 events

2.1.4 Events

	ccd 4	ccd 5	ccd 6	ccd 7	ccd 8	ccd 9		ccd 4	ccd 5	ccd 6	ccd 7	ccd 8	ccd 9
level 1 events	113238	276817	130310	286106	133423	123770	grade 0 events	56564	66367	64055	69703	66344	61112
rejected events	12902	25056	13191	16473	13439	12529		49%	23%	49%	24%	49%	49%
rejected %	11%	9%	10%	5%	10%	10%	grade 1 events	398	248	356	173	395	357
								0%	0%	0%	0%	0%	0%
							grade 2 events	17602	85751	20217	59886	21021	19352
								15%	30%	15%	20%	15%	15%
							grade 3 events	6212	17443	7368	27775	7690	6906
								5%	6%	5%	9%	5%	5%
							grade 4 events	6279	17342	7293	27656	7626	6828
								5%	6%	5%	9%	5%	5%
							grade 5 events	934	5346	977	3847	1126	963
								0%	1%	0%	1%	0%	0%
							grade 6 events	13679	64858	18186	84613	17303	17043
								12%	23%	13%	29%	12%	13%
							grade 7 events	11570	19462	11858	12453	11918	11209
								10%	7%	9%	4%	8%	9%

2.2 Compared Parameters

Parameter	Planned	Actual	Parameter	Planned	Actual
Instrument	ACIS	ACIS	Obspar format version number	7	7
Detector	ACIS-456789	ACIS-456789	Obspar file type	PREDICTED	ACTUAL
Grating	NONE	NONE	Obspar update status	NONE	UPDATED
Data mode	FAINT	FAINT	On-chip summing requested	N	N
Observation mode	SECONDARY	SECONDARY	Subarray requested	NONE	NONE
[deg] Pointing RA	0	88.21809160290145	Alternating exposures requested	N	N
[deg] Pointing Dec	0	-28.02404777089707	[s] Primary exposure time	0.000000	3.2
[deg] Pointing Roll	0.0	271.3258317075184			
[mm] SIM focus pos	-0.684267	-0.7809083437167272			
[mm] SIM defocus	0	0.7524282956875696			
[mm] SIM translation stage pos	-190.132523	250.466033080201			
[mm] SIM translation stage offset	0	-0.01005468664627074			
[s] Observation start time (MET)	69671057.623	69671056.854616			
Observation start date	2000-03-17T09:04:18	2000-03-17T09:04:16			
[s] Observation end time (MET)	69716643.47499999	69716642.706282			
Observation end date	2000-03-17T21:44:03	2000-03-17T21:44:02			
Read mode	TIMED	TIMED			

2.3 Star Slots

2.4 FID Slots

A Summary

A.1 Status

V&V Scientist	Jen Lauer
V&V Date (YYYY-MM-DD)	2012.08.27
V&V Edition	1
V&V Disposition and Status	OK
V&V Charge Time	2.9907269992679

A.2 Comments