

V&V Reference Report

L2 ASCDS Version : 8.4.5

Observation 62114 - L2 Version 4
Chandra X-Ray Center

L2 Processing Date : Aug 24 2012

Contents

1	Front	2
2	OBI	3
2.1	OBI	3
2.1.1	Images	3
2.1.2	Bias	3
2.1.3	Parameters	4
2.1.4	Events	4
2.2	Compared Parameters	5
2.3	Star Slots	6
2.4	FID Slots	6
A	Summary	7
A.1	Status	7
A.2	Comments	7

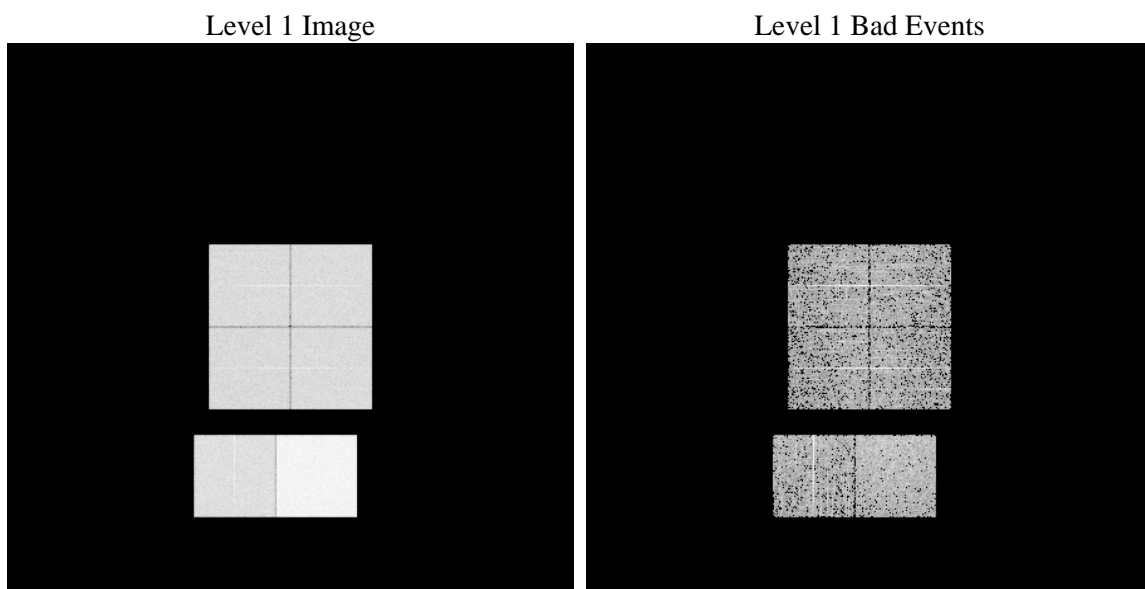
1 Front

seq_num	 	Sequence number
obs_id	62114	Observation id
title	ACIS-012367 diagnostics	Proposal title
observer	CHANDRA engineering request/realtime commanding	Principal investig
object	 	Source name
dtcycle	0	
cycle	P	events from which exps? Prim/Second/Both
ra_targ	0.0	Observer's specified target RA [deg]
dec_targ	0.0	Observer's specified target Dec [deg]
ra_nom	269.96712448137	Nominal RA [deg]
dec_nom	-61.9756728241	Nominal Dec [deg]
roll_nom	90.248159597945	Nominal Roll [deg]
revision	4	Processing version of data
ontime	3539.057593435	Sum of GTIs [s]
livetime	3494.2439152223	Livetime [s]
ontime0	1464.9487503618	Sum of GTIs [s]
ontime1	1503.8411704153	Sum of GTIs [s]
ontime2	1396.8868008703	Sum of GTIs [s]
ontime3	1461.7077103704	Sum of GTIs [s]
ontime6	1614.0365401208	Sum of GTIs [s]
ontime7	3539.057593435	Sum of GTIs [s]
l2events	931196	Number of level 2 events

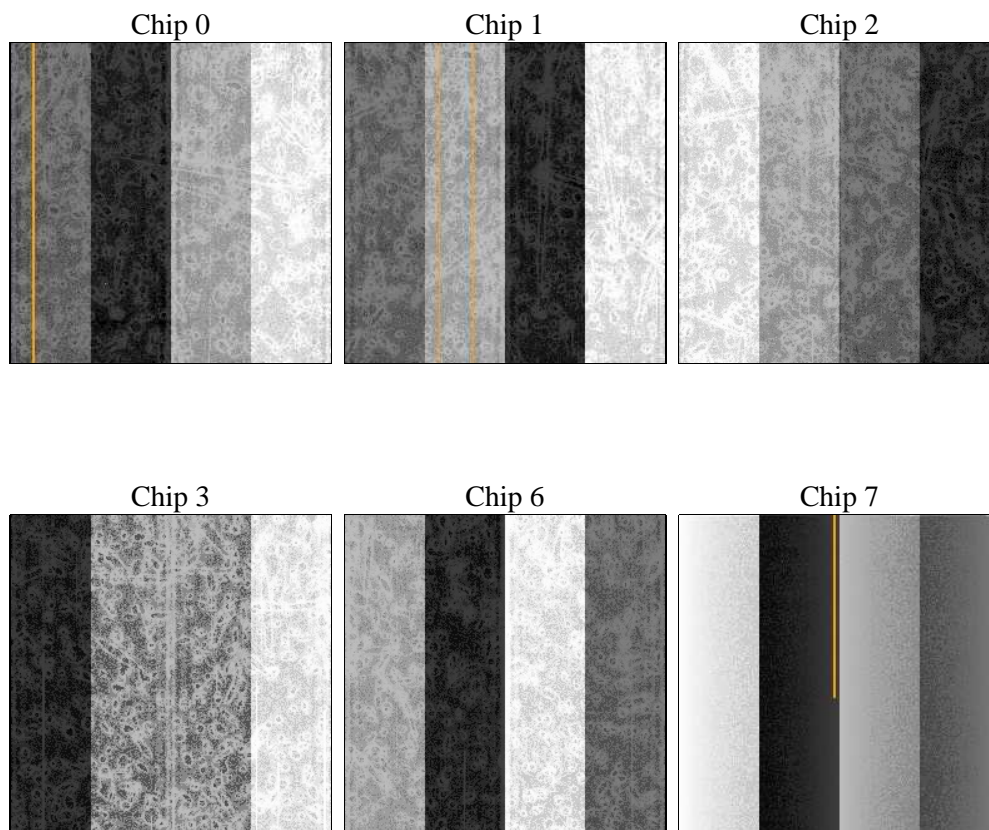
2 OBI

2.1 OBI

2.1.1 Images



2.1.2 Bias



2.1.3 Parameters

obi_num	0	Obi number	sched_exp_time	0.0	[s] Scheduled observation exposure time
ascdsver	8.4.5	Processing system revision	ontime	3539.057593435	Sum of GTIs [s]
caldsver	4.5.1.1	 	ontime0	1464.9487503618	Sum of GTIs [s]
date	2012-08-24T15:45:33	Date and time of file creation	ontime1	1503.8411704153	Sum of GTIs [s]
revision	4	Processing version of data	ontime2	1396.8868008703	Sum of GTIs [s]
			ontime3	1461.7077103704	Sum of GTIs [s]
			ontime6	1614.0365401208	Sum of GTIs [s]
			ontime7	3539.057593435	Sum of GTIs [s]
			l1events	1060248	Number of level 1 events

2.1.4 Events

	ccd 0	ccd 1	ccd 2	ccd 3	ccd 6	ccd 7		ccd 0	ccd 1	ccd 2	ccd 3	ccd 6	ccd 7
level 1 events	139937	143683	134680	141660	161673	338615	grade 0 events	69031	71653	67749	72013	80022	82758
rejected events	14276	14287	13107	13641	15572	19602		49%	49%	50%	50%	49%	24%
rejected %	10%	9%	9%	9%	9%	5%	grade 1 events	455	449	415	434	438	227
								0%	0%	0%	0%	0%	0%
							grade 2 events	22151	22495	21165	22089	25218	71348
								15%	15%	15%	15%	15%	21%
							grade 3 events	7995	8073	7715	8159	9101	32818
								5%	5%	5%	5%	5%	9%
							grade 4 events	7895	8312	7717	7994	8905	32534
								5%	5%	5%	5%	5%	9%
							grade 5 events	1008	1114	954	958	1189	4501
								0%	0%	0%	0%	0%	1%
							grade 6 events	18589	18863	17227	17764	22855	99555
								13%	13%	12%	12%	14%	29%
							grade 7 events	12813	12724	11738	12249	13945	14874
								9%	8%	8%	8%	8%	4%

2.2 Compared Parameters

Parameter	Planned	Actual	Parameter	Planned	Actual
Instrument	ACIS	ACIS	Obspar format version number	7	7
Detector	ACIS-012367	ACIS-012367	Obspar file type	PREDICTED	ACTUAL
Grating	NONE	NONE	Obspar update status	NONE	UPDATED
Data mode	FAINT	FAINT	On-chip summing requested	N	N
Observation mode	SECONDARY	SECONDARY	Subarray requested	NONE	NONE
[deg] Pointing RA	0	269.9671244813671	Alternating exposures requested	N	N
[deg] Pointing Dec	0	-61.97567282409954	[s] Primary exposure time	0.000000	3.2
[deg] Pointing Roll	0.0	90.24815959794527			
[mm] SIM focus pos	-0.782348	-0.6828225247311905			
[mm] SIM defocus	0	0.8505141146731063			
[mm] SIM translation stage pos	-233.592463	250.466033080201			
[mm] SIM translation stage offset	0	-0.01005468664627074			
[s] Observation start time (MET)	69889694.23100001	69889693.46260799			
Observation start date	2000-03-19T21:48:14	2000-03-19T21:48:13			
[s] Observation end time (MET)	69898318.581	69898317.812923			
Observation end date	2000-03-20T00:11:59	2000-03-20T00:11:57			
Read mode	TIMED	TIMED			

2.3 Star Slots

2.4 FID Slots

A Summary

A.1 Status

V&V Scientist	Jen Lauer
V&V Date (YYYY-MM-DD)	2012.08.27
V&V Edition	1
V&V Disposition and Status	OK
V&V Charge Time	3.539057593435

A.2 Comments