

V&V Reference Report

L2 ASCDS Version : 8.4.5

Observation 62113 - L2 Version 4
Chandra X-Ray Center

L2 Processing Date : Aug 24 2012

Contents

1	Front	2
2	OBI	3
2.1	OBI	3
2.1.1	Images	3
2.1.2	Bias	3
2.1.3	Parameters	4
2.1.4	Events	4
2.2	Compared Parameters	5
2.3	Star Slots	6
2.4	FID Slots	6
A	Summary	7
A.1	Status	7
A.2	Comments	7

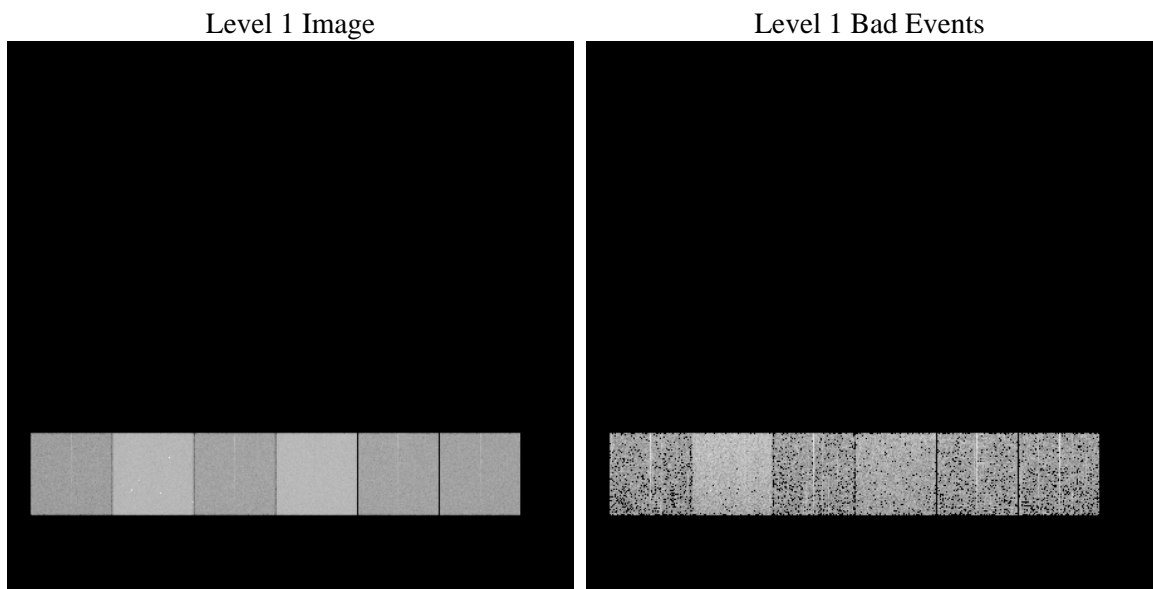
1 Front

seq_num	 	Sequence number
obs_id	62113	Observation id
title	ACIS-456789 diagnostics	Proposal title
observer	CHANDRA engineering request/realtime commanding	Principal investig
object	 	Source name
dtcycle	0	
cycle	P	events from which exps? Prim/Second/Both
ra_targ	0.0	Observer's specified target RA [deg]
dec_targ	0.0	Observer's specified target Dec [deg]
ra_nom	269.96719052592	Nominal RA [deg]
dec_nom	-61.975636952392	Nominal Dec [deg]
roll_nom	90.138368482325	Nominal Roll [deg]
revision	4	Processing version of data
ontime	2973.999287948	Sum of GTIs [s]
livetime	2936.3407182366	Livetime [s]
ontime4	1181.8358973712	Sum of GTIs [s]
ontime5	3178.2223178744	Sum of GTIs [s]
ontime6	1330.8826471269	Sum of GTIs [s]
ontime7	2973.999287948	Sum of GTIs [s]
ontime8	1338.7619532049	Sum of GTIs [s]
ontime9	1308.0723269433	Sum of GTIs [s]
l2events	928619	Number of level 2 events

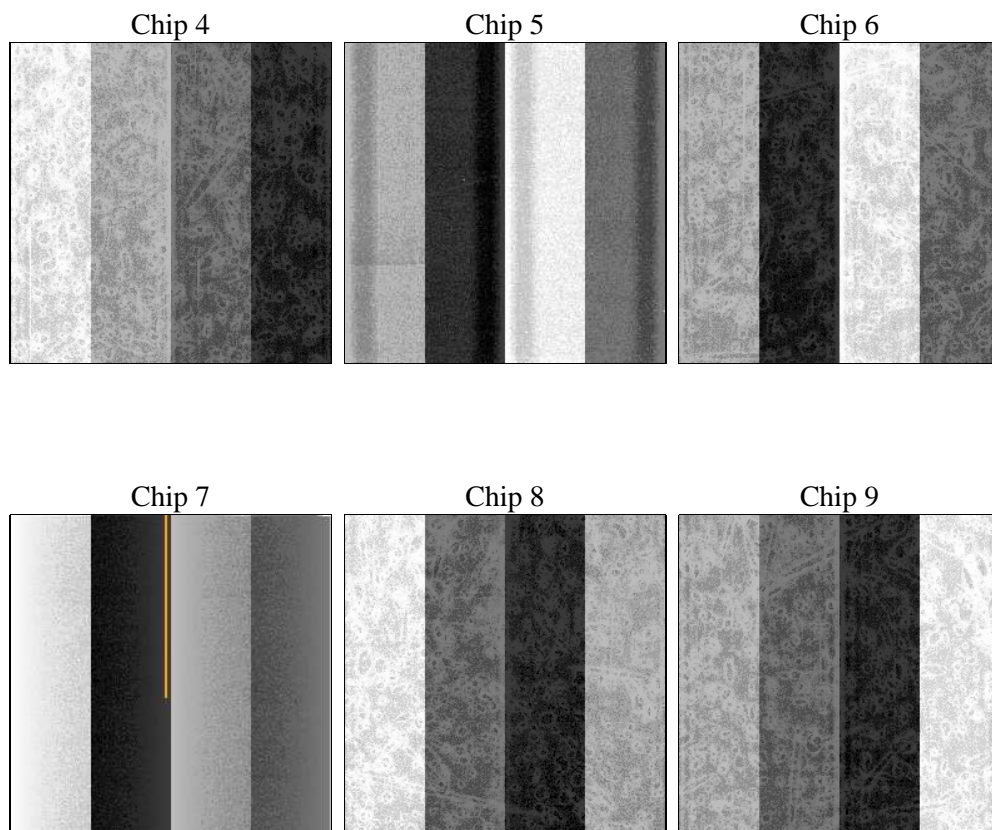
2 OBI

2.1 OBI

2.1.1 Images



2.1.2 Bias



2.1.3 Parameters

obi_num	0	Obi number	sched_exp_time	0.0	[s] Scheduled observation exposure time
ascdsver	8.4.5	Processing system revision	ontime	2973.999287948	Sum of GTIs [s]
caldsver	4.5.1.1	 	ontime4	1181.8358973712	Sum of GTIs [s]
date	2012-08-24T16:00:22	Date and time of file creation	ontime5	3178.2223178744	Sum of GTIs [s]
revision	4	Processing version of data	ontime6	1330.8826471269	Sum of GTIs [s]
			ontime7	2973.999287948	Sum of GTIs [s]
			ontime8	1338.7619532049	Sum of GTIs [s]
			ontime9	1308.0723269433	Sum of GTIs [s]
			l1events	1062979	Number of level 1 events

2.1.4 Events

	ccd 4	ccd 5	ccd 6	ccd 7	ccd 8	ccd 9		ccd 4	ccd 5	ccd 6	ccd 7	ccd 8	ccd 9
level 1 events	110810	274192	133621	283640	135053	125663	grade 0 events	55914	63839	66046	69185	66942	61948
rejected events	12292	25950	12651	16585	13923	12706		50%	23%	49%	24%	49%	49%
rejected %	11%	9%	9%	5%	10%	10%	grade 1 events	371	284	390	164	361	369
								0%	0%	0%	0%	0%	0%
							grade 2 events	17103	86362	20801	59068	21387	20023
								15%	31%	15%	20%	15%	15%
							grade 3 events	5885	16475	7513	27553	7653	7087
								5%	6%	5%	9%	5%	5%
							grade 4 events	6014	16223	7553	27430	7568	6988
								5%	5%	5%	9%	5%	5%
							grade 5 events	873	5414	1014	3736	1060	998
								0%	1%	0%	1%	0%	0%
							grade 6 events	13602	65343	19057	83819	17849	16911
								12%	23%	14%	29%	13%	13%
							grade 7 events	11048	20252	11247	12685	12233	11339
								9%	7%	8%	4%	9%	9%

2.2 Compared Parameters

Parameter	Planned	Actual	Parameter	Planned	Actual
Instrument	ACIS	ACIS	Obspar format version number	7	7
Detector	ACIS-456789	ACIS-456789	Obspar file type	PREDICTED	ACTUAL
Grating	NONE	NONE	Obspar update status	NONE	UPDATED
Data mode	FAINT	FAINT	On-chip summing requested	N	N
Observation mode	SECONDARY	SECONDARY	Subarray requested	NONE	NONE
[deg] Pointing RA	0	269.9671905259178	Alternating exposures requested	N	N
[deg] Pointing Dec	0	-61.97563695239175	[s] Primary exposure time	0.000000	3.2
[deg] Pointing Roll	0.0	90.13836848232543			
[mm] SIM focus pos	-0.684267	-0.6828225247311905			
[mm] SIM defocus	0	0.8505141146731063			
[mm] SIM translation stage pos	-190.132523	250.466033080201			
[mm] SIM translation stage offset	0	-0.01005468664627074			
[s] Observation start time (MET)	69898318.581	69898317.812923			
Observation start date	2000-03-20T00:11:59	2000-03-20T00:11:57			
[s] Observation end time (MET)	69942672.383	69942671.614546			
Observation end date	2000-03-20T12:31:12	2000-03-20T12:31:11			
Read mode	TIMED	TIMED			

2.3 Star Slots

2.4 FID Slots

A Summary

A.1 Status

V&V Scientist	Jen Lauer
V&V Date (YYYY-MM-DD)	2012.08.27
V&V Edition	1
V&V Disposition and Status	OK
V&V Charge Time	2.973999287948

A.2 Comments