

V&V Reference Report

L2 ASCDS Version : 8.4.5

Observation 62105 - L2 Version 4
Chandra X-Ray Center

L2 Processing Date : Aug 24 2012

Contents

1	Front	2
2	OBI	3
2.1	OBI	3
2.1.1	Images	3
2.1.2	Bias	3
2.1.3	Parameters	4
2.1.4	Events	4
2.2	Compared Parameters	5
2.3	Star Slots	6
2.4	FID Slots	6
A	Summary	7
A.1	Status	7
A.2	Comments	7

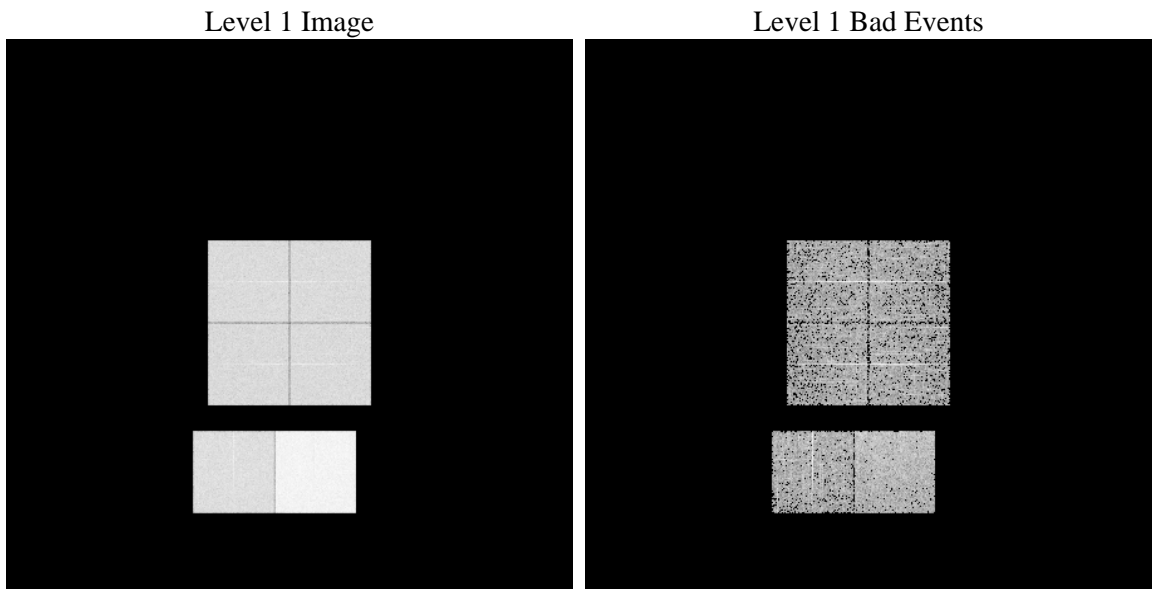
1 Front

seq_num	 	Sequence number
obs_id	62105	Observation id
title	ACIS-012367 diagnostics	Proposal title
observer	CHANDRA engineering request/realtime commanding	Principal investig
object	 	Source name
dtcycle	0	
cycle	P	events from which exps? Prim/Second/Both
ra_targ	0.0	Observer's specified target RA [deg]
dec_targ	0.0	Observer's specified target Dec [deg]
ra_nom	131.35519349723	Nominal RA [deg]
dec_nom	86.416242323554	Nominal Dec [deg]
roll_nom	233.16682159914	Nominal Roll [deg]
revision	4	Processing version of data
ontime	3514.3813313395	Sum of GTIs [s]
livetime	3469.8801188157	Livetime [s]
ontime0	1498.4756252915	Sum of GTIs [s]
ontime1	1469.3063551337	Sum of GTIs [s]
ontime2	1394.7624353319	Sum of GTIs [s]
ontime3	1422.0474267453	Sum of GTIs [s]
ontime6	1587.5454768836	Sum of GTIs [s]
ontime7	3514.3813313395	Sum of GTIs [s]
l2events	919967	Number of level 2 events

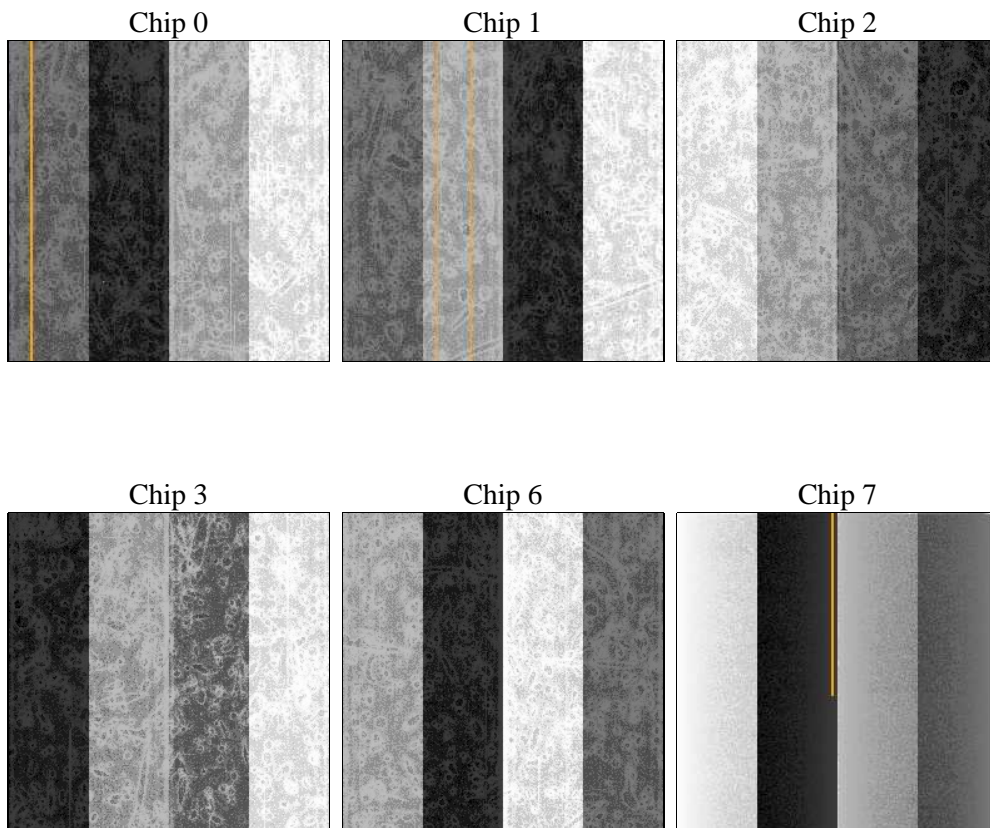
2 OBI

2.1 OBI

2.1.1 Images



2.1.2 Bias



2.1.3 Parameters

obi_num	0	Obi number	sched_exp_time	0.0	[s] Scheduled observation exposure time
ascdsver	8.4.5	Processing system revision	ontime	3514.3813313395	Sum of GTIs [s]
caldsver	4.5.1.1	 	ontime0	1498.4756252915	Sum of GTIs [s]
date	2012-08-24T19:18:36	Date and time of file creation	ontime1	1469.3063551337	Sum of GTIs [s]
revision	4	Processing version of data	ontime2	1394.7624353319	Sum of GTIs [s]
			ontime3	1422.0474267453	Sum of GTIs [s]
			ontime6	1587.5454768836	Sum of GTIs [s]
			ontime7	3514.3813313395	Sum of GTIs [s]
			l1events	1050348	Number of level 1 events

2.1.4 Events

	ccd 0	ccd 1	ccd 2	ccd 3	ccd 6	ccd 7		ccd 0	ccd 1	ccd 2	ccd 3	ccd 6	ccd 7
level 1 events	141988	140538	135122	138056	159214	335430	grade 0 events	70875	70298	67608	69078	78420	81163
rejected events	13977	13766	13644	14342	15916	20464		49%	50%	50%	50%	49%	24%
rejected %	9%	9%	10%	10%	9%	6%	grade 1 events	403	393	419	462	418	189
								0%	0%	0%	0%	0%	0%
							grade 2 events	22233	22216	21353	21764	24944	70266
								15%	15%	15%	15%	15%	20%
							grade 3 events	8338	8088	7775	7823	8983	32306
								5%	5%	5%	5%	5%	9%
							grade 4 events	8236	8115	7565	7909	8993	32311
								5%	5%	5%	5%	5%	9%
							grade 5 events	1069	980	969	1017	1170	4543
								0%	0%	0%	0%	0%	1%
							grade 6 events	18599	18319	17177	17410	22594	99792
								13%	13%	12%	12%	14%	29%
							grade 7 events	12235	12129	12256	12593	13692	14860
								8%	8%	9%	9%	8%	4%

2.2 Compared Parameters

Parameter	Planned	Actual
Instrument	ACIS	ACIS
Detector	ACIS-012367	ACIS-012367
Grating	NONE	NONE
Data mode	FAINT	FAINT
Observation mode	SECONDARY	SECONDARY
[deg] Pointing RA	0	131.3551934972329
[deg] Pointing Dec	0	86.41624232355373
[deg] Pointing Roll	0.0	233.1668215991385
[mm] SIM focus pos	-0.782348	-0.6828225247311905
[mm] SIM defocus	0	0.8505141146731063
[mm] SIM translation stage pos	-233.592463	250.466033080201
[mm] SIM translation stage offset	0	-0.01005468664627074
[s] Observation start time (MET)	70409559.90000001	70409559.131614
Observation start date	2000-03-25T22:12:40	2000-03-25T22:12:39
[s] Observation end time (MET)	70416859.95	70416859.181881
Observation end date	2000-03-26T00:14:20	2000-03-26T00:14:19
Read mode	TIMED	TIMED

Parameter	Planned	Actual
Obspar format version number	7	7
Obspar file type	PREDICTED	ACTUAL
Obspar update status	NONE	UPDATED
On-chip summing requested	N	N
Subarray requested	NONE	NONE
Alternating exposures requested	N	N
[s] Primary exposure time	0.000000	3.2

2.3 Star Slots

2.4 FID Slots

A Summary

A.1 Status

V&V Scientist	Jen Lauer
V&V Date (YYYY-MM-DD)	2012.08.28
V&V Edition	1
V&V Disposition and Status	OK
V&V Charge Time	3.5143813313395

A.2 Comments