

# V&V Reference Report

## L2 ASCDS Version : 8.4.5

Observation 62091 - L2 Version 5  
Chandra X-Ray Center

L2 Processing Date : Aug 25 2012

## Contents

<b>1</b>	<b>Front</b>	<b>2</b>
<b>2</b>	<b>OBI</b>	<b>3</b>
2.1	OBI . . . . .	3
2.1.1	Images . . . . .	3
2.1.2	Bias . . . . .	3
2.1.3	Parameters . . . . .	4
2.1.4	Events . . . . .	4
2.2	Compared Parameters . . . . .	5
2.3	Star Slots . . . . .	6
2.4	FID Slots . . . . .	6
<b>A</b>	<b>Summary</b>	<b>7</b>
A.1	Status . . . . .	7
A.2	Comments . . . . .	7

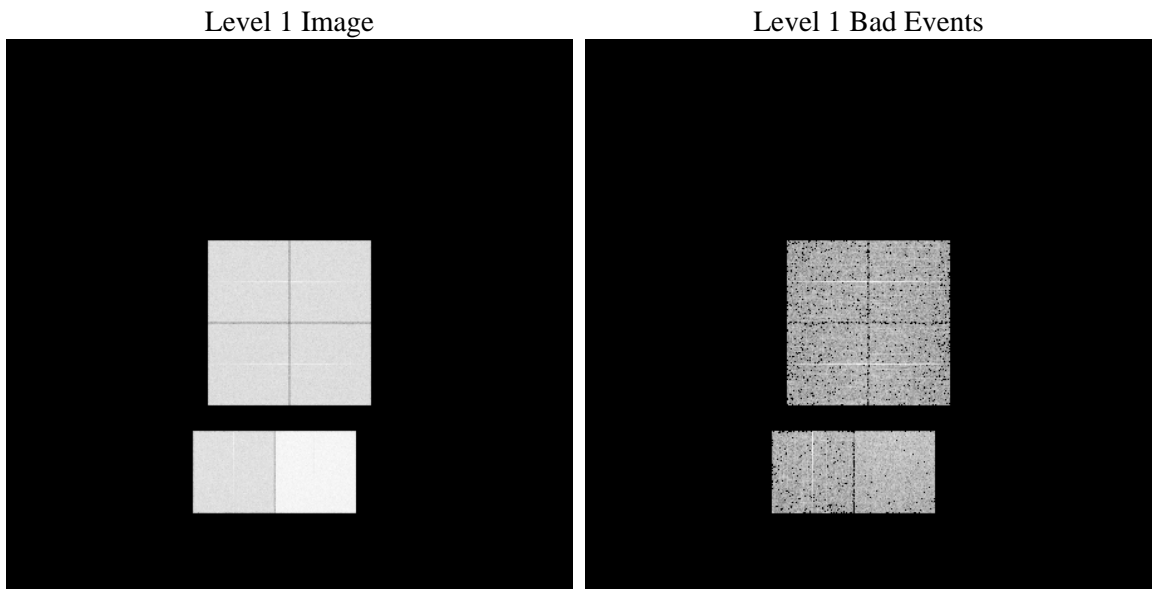
# 1 Front

seq_num	&#160	Sequence number
obs_id	62091	Observation id
title	ACIS-012367 diagnostics	Proposal title
observer	CHANDRA engineering request/realtime commanding	Principal investig
object	&#160	Source name
dtcycle	0	&#160
cycle	P	events from which exps? Prim/Second/Both
ra_targ	0.0	Observer's specified target RA [deg]
dec_targ	0.0	Observer's specified target Dec [deg]
ra_nom	345.01537658651	Nominal RA [deg]
dec_nom	55.027435176773	Nominal Dec [deg]
roll_nom	39.974934207858	Nominal Roll [deg]
revision	5	Processing version of data
ontime	4920.2126314044	Sum of GTIs [s]
livetime	4857.9099364692	Livetime [s]
ontime0	2113.1567188054	Sum of GTIs [s]
ontime1	2110.1762159616	Sum of GTIs [s]
ontime2	2048.55543603	Sum of GTIs [s]
ontime3	2051.5770387203	Sum of GTIs [s]
ontime6	2200.6646988988	Sum of GTIs [s]
ontime7	4920.2126314044	Sum of GTIs [s]
l2events	1292799	Number of level 2 events

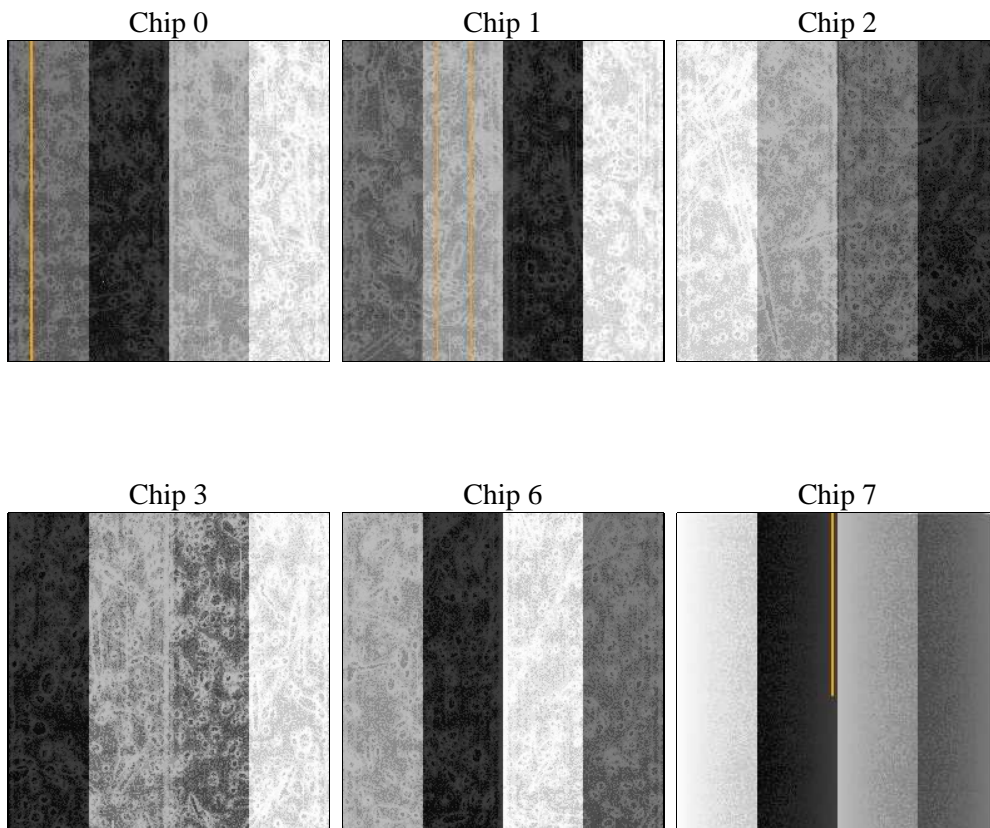
## 2 OBI

### 2.1 OBI

#### 2.1.1 Images



#### 2.1.2 Bias



### 2.1.3 Parameters

obi_num	0	Obi number	sched_exp_time	0.0	[s] Scheduled observation exposure time
ascdsver	8.4.5	Processing system revision	ontime	4920.2126314044	Sum of GTIs [s]
caldsver	4.5.1.1	&#160	ontime0	2113.1567188054	Sum of GTIs [s]
date	2012-08-25T16:01:53	Date and time of file creation	ontime1	2110.1762159616	Sum of GTIs [s]
revision	5	Processing version of data	ontime2	2048.55543603	Sum of GTIs [s]
			ontime3	2051.5770387203	Sum of GTIs [s]
			ontime6	2200.6646988988	Sum of GTIs [s]
			ontime7	4920.2126314044	Sum of GTIs [s]
			l1events	1467461	Number of level 1 events

### 2.1.4 Events

	ccd 0	ccd 1	ccd 2	ccd 3	ccd 6	ccd 7		ccd 0	ccd 1	ccd 2	ccd 3	ccd 6	ccd 7
level 1 events	198776	198333	195391	196499	217294	461168	grade 0 events	99697	99266	98862	99528	107940	112597
rejected events	18051	18909	18567	19216	19871	26212		50%	50%	50%	50%	49%	24%
rejected %	9%	9%	9%	9%	9%	5%	grade 1 events	600	576	524	591	606	344
								0%	0%	0%	0%	0%	0%
							grade 2 events	31802	31541	30996	30904	34075	97172
								15%	15%	15%	15%	15%	21%
							grade 3 events	11544	11450	11183	11069	12323	44975
								5%	5%	5%	5%	5%	9%
							grade 4 events	11525	11442	11198	11095	12238	44182
								5%	5%	5%	5%	5%	9%
							grade 5 events	1375	1410	1347	1410	1577	6156
								0%	0%	0%	0%	0%	1%
							grade 6 events	26157	26012	24898	24687	30847	136347
								13%	13%	12%	12%	14%	29%
							grade 7 events	16076	16636	16383	17215	17688	19395
								8%	8%	8%	8%	8%	4%

## 2.2 Compared Parameters

Parameter	Planned	Actual
Instrument	ACIS	ACIS
Detector	ACIS-012367	ACIS-012367
Grating	NONE	NONE
Data mode	FAINT	FAINT
Observation mode	SECONDARY	SECONDARY
[deg] Pointing RA	0	345.0153765865125
[deg] Pointing Dec	0	55.02743517677347
[deg] Pointing Roll	0.0	39.97493420785754
[mm] SIM focus pos	-0.782348	-0.6828225247311905
[mm] SIM defocus	0	0.8505141146731063
[mm] SIM translation stage pos	-233.592463	250.466033080201
[mm] SIM translation stage offset	0	-0.01005468664627074
[s] Observation start time (MET)	71497742.98990799	71497742.221444
Observation start date	2000-04-07T12:29:03	2000-04-07T12:29:02
[s] Observation end time (MET)	71540514.191475	71540513.423011
Observation end date	2000-04-08T00:21:54	2000-04-08T00:21:53
Read mode	TIMED	TIMED

Parameter	Planned	Actual
Obspar format version number	7	7
Obspar file type	PREDICTED	ACTUAL
Obspar update status	NONE	UPDATED
On-chip summing requested	N	N
Subarray requested	NONE	NONE
Alternating exposures requested	N	N
[s] Primary exposure time	3.2	3.2

## 2.3 Star Slots

## 2.4 FID Slots

## A Summary

### A.1 Status

V&V Scientist	Jen Lauer
V&V Date (YYYY-MM-DD)	2012.08.28
V&V Edition	1
V&V Disposition and Status	OK
V&V Charge Time	4.9202126314044

### A.2 Comments