

V&V Reference Report

L2 ASCDS Version : 8.4.5

Observation 62069 - L2 Version 5
Chandra X-Ray Center

L2 Processing Date : Aug 26 2012

Contents

1	Front	2
2	OBI	3
2.1	OBI	3
2.1.1	Images	3
2.1.2	Bias	3
2.1.3	Parameters	4
2.1.4	Events	4
2.2	Compared Parameters	5
2.3	Star Slots	6
2.4	FID Slots	6
A	Summary	7
A.1	Status	7
A.2	Comments	7

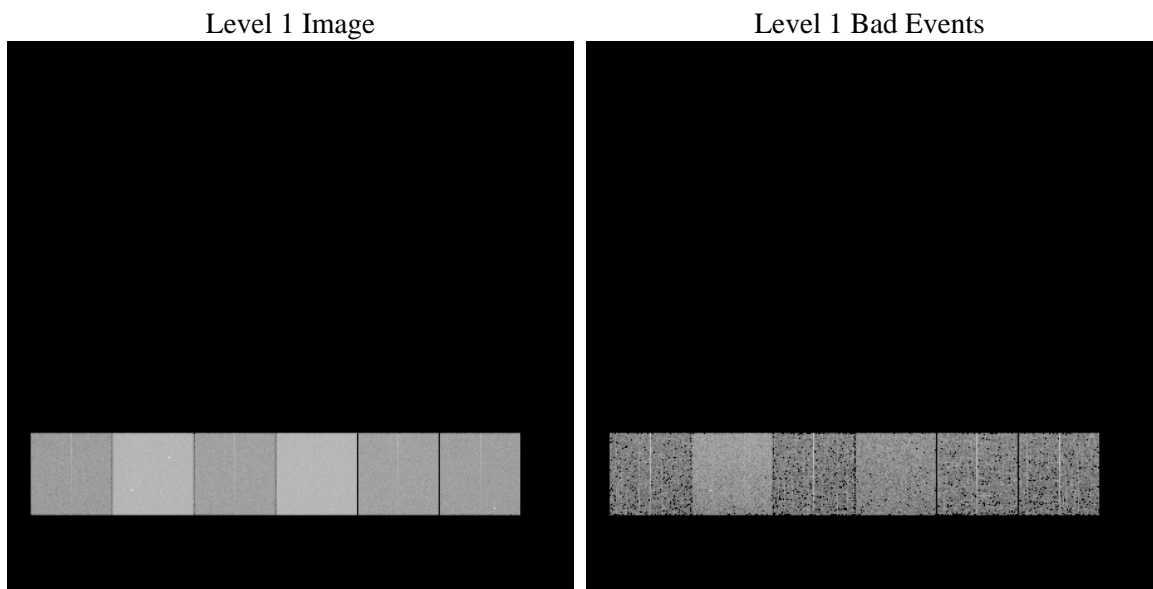
1 Front

seq_num	 	Sequence number
obs_id	62069	Observation id
title	ACIS-456789 diagnostics	Proposal title
observer	CHANDRA engineering request/realtime commanding	Principal investig
object	 	Source name
dtcycle	0	
cycle	P	events from which exps? Prim/Second/Both
ra_targ	0.0	Observer's specified target RA [deg]
dec_targ	0.0	Observer's specified target Dec [deg]
ra_nom	260.00576120547	Nominal RA [deg]
dec_nom	-59.971334547977	Nominal Dec [deg]
roll_nom	51.96607283461	Nominal Roll [deg]
revision	5	Processing version of data
ontime	4227.2961098552	Sum of GTIs [s]
livetime	4173.7675411401	Livetime [s]
ontime4	1656.1701396406	Sum of GTIs [s]
ontime5	4525.4254148006	Sum of GTIs [s]
ontime6	1818.2221392095	Sum of GTIs [s]
ontime7	4227.2961098552	Sum of GTIs [s]
ontime8	1853.8733697683	Sum of GTIs [s]
ontime9	1743.6781396568	Sum of GTIs [s]
l2events	1273732	Number of level 2 events

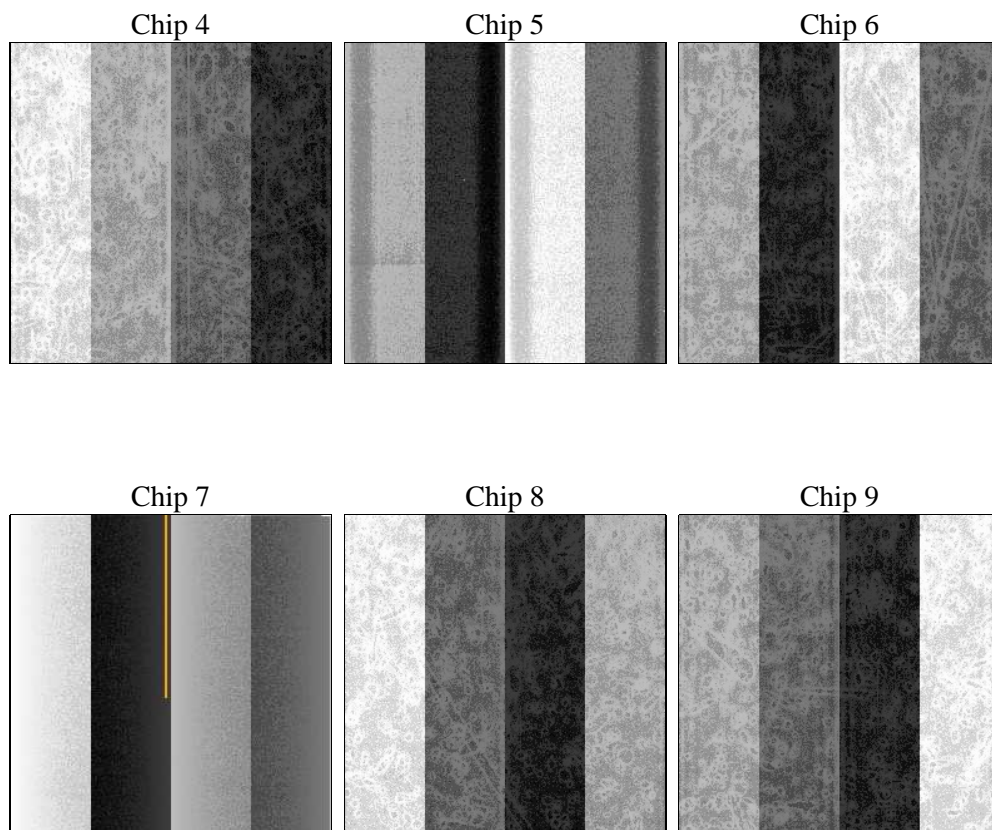
2 OBI

2.1 OBI

2.1.1 Images



2.1.2 Bias



2.1.3 Parameters

obi_num	0	Obi number	sched_exp_time	0.0	[s] Scheduled observation exposure time
ascdsver	8.4.5	Processing system revision	ontime	4227.2961098552	Sum of GTIs [s]
caldsver	4.5.1.1	 	ontime4	1656.1701396406	Sum of GTIs [s]
date	2012-08-26T21:51:53	Date and time of file creation	ontime5	4525.4254148006	Sum of GTIs [s]
revision	5	Processing version of data	ontime6	1818.2221392095	Sum of GTIs [s]
			ontime7	4227.2961098552	Sum of GTIs [s]
			ontime8	1853.8733697683	Sum of GTIs [s]
			ontime9	1743.6781396568	Sum of GTIs [s]
			l1events	1461449	Number of level 1 events

2.1.4 Events

	ccd 4	ccd 5	ccd 6	ccd 7	ccd 8	ccd 9		ccd 4	ccd 5	ccd 6	ccd 7	ccd 8	ccd 9
level 1 events	153520	383530	178404	395348	184058	166589	grade 0 events	76682	91843	87595	95909	90420	82164
rejected events	17760	36694	17428	24027	19616	17429		49%	23%	49%	24%	49%	49%
rejected %	11%	9%	9%	6%	10%	10%	grade 1 events	496	619	511	278	514	510
								0%	0%	0%	0%	0%	0%
							grade 2 events	24007	117781	28091	82617	29111	26059
								15%	30%	15%	20%	15%	15%
							grade 3 events	8496	24007	9848	38050	10460	9285
								5%	6%	5%	9%	5%	5%
							grade 4 events	8481	23764	9956	38146	10241	9162
								5%	6%	5%	9%	5%	5%
							grade 5 events	1202	7493	1396	5444	1504	1311
								0%	1%	0%	1%	0%	0%
							grade 6 events	18094	89698	25486	116883	24210	22490
								11%	23%	14%	29%	13%	13%
							grade 7 events	16062	28325	15521	18021	17598	15608
								10%	7%	8%	4%	9%	9%

2.2 Compared Parameters

Parameter	Planned	Actual	Parameter	Planned	Actual
Instrument	ACIS	ACIS	Obspar format version number	7	7
Detector	ACIS-456789	ACIS-456789	Obspar file type	PREDICTED	ACTUAL
Grating	NONE	NONE	Obspar update status	NONE	UPDATED
Data mode	FAINT	FAINT	On-chip summing requested	N	N
Observation mode	SECONDARY	SECONDARY	Subarray requested	NONE	NONE
[deg] Pointing RA	0	260.0057612054658	Alternating exposures requested	N	N
[deg] Pointing Dec	0	-59.97133454797684	[s] Primary exposure time	0.000000	3.2
[deg] Pointing Roll	0.0	51.96607283460966			
[mm] SIM focus pos	-0.684267	-0.6828225247311905			
[mm] SIM defocus	0	0.8505141146731063			
[mm] SIM translation stage pos	-190.132523	250.466033080201			
[mm] SIM translation stage offset	0	-0.01005468664627074			
[s] Observation start time (MET)	73553085.36499999	73553084.59682401			
Observation start date	2000-05-01T07:24:45	2000-05-01T07:24:44			
[s] Observation end time (MET)	73601051.267	73601050.498583			
Observation end date	2000-05-01T20:44:11	2000-05-01T20:44:10			
Read mode	TIMED	TIMED			

2.3 Star Slots

2.4 FID Slots

A Summary

A.1 Status

V&V Scientist	Jen Lauer
V&V Date (YYYY-MM-DD)	2012.08.29
V&V Edition	1
V&V Disposition and Status	OK
V&V Charge Time	4.2272961098552

A.2 Comments