

V&V Reference Report

L2 ASCDS Version : 8.4.5

Observation 62055 - L2 Version 5
Chandra X-Ray Center

L2 Processing Date : Aug 27 2012

Contents

1	Front	2
2	OBI	3
2.1	OBI	3
2.1.1	Images	3
2.1.2	Bias	3
2.1.3	Parameters	4
2.1.4	Events	4
2.2	Compared Parameters	5
2.3	Star Slots	6
2.4	FID Slots	6
A	Summary	7
A.1	Status	7
A.2	Comments	7

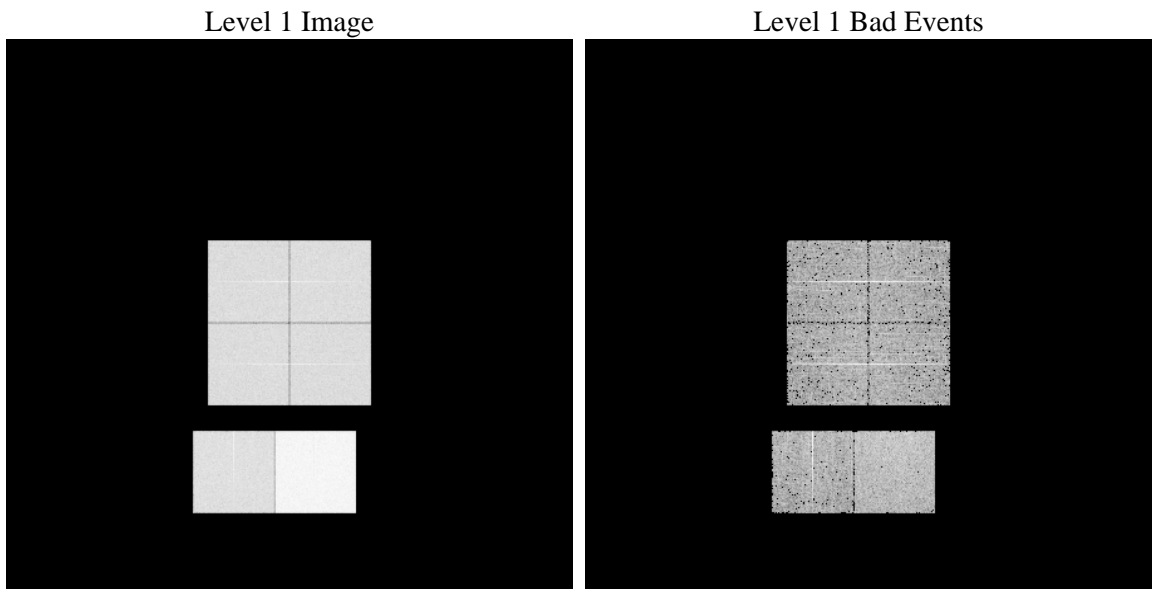
1 Front

seq_num	 	Sequence number
obs_id	62055	Observation id
title	ACIS-012367 diagnostics	Proposal title
observer	CHANDRA engineering request/realtime commanding	Principal investig
object	 	Source name
dtcycle	0	
cycle	P	events from which exps? Prim/Second/Both
ra_targ	0.0	Observer's specified target RA [deg]
dec_targ	0.0	Observer's specified target Dec [deg]
ra_nom	10.875627073729	Nominal RA [deg]
dec_nom	-58.24693898968	Nominal Dec [deg]
roll_nom	141.36493254392	Nominal Roll [deg]
revision	5	Processing version of data
ontime	5310.6691466868	Sum of GTIs [s]
livetime	5243.4222562504	Livetime [s]
ontime0	2210.3877186328	Sum of GTIs [s]
ontime1	2252.520969227	Sum of GTIs [s]
ontime2	2158.5309291631	Sum of GTIs [s]
ontime3	2116.3975189775	Sum of GTIs [s]
ontime6	2338.5053661615	Sum of GTIs [s]
ontime7	5310.6691466868	Sum of GTIs [s]
l2events	1334907	Number of level 2 events

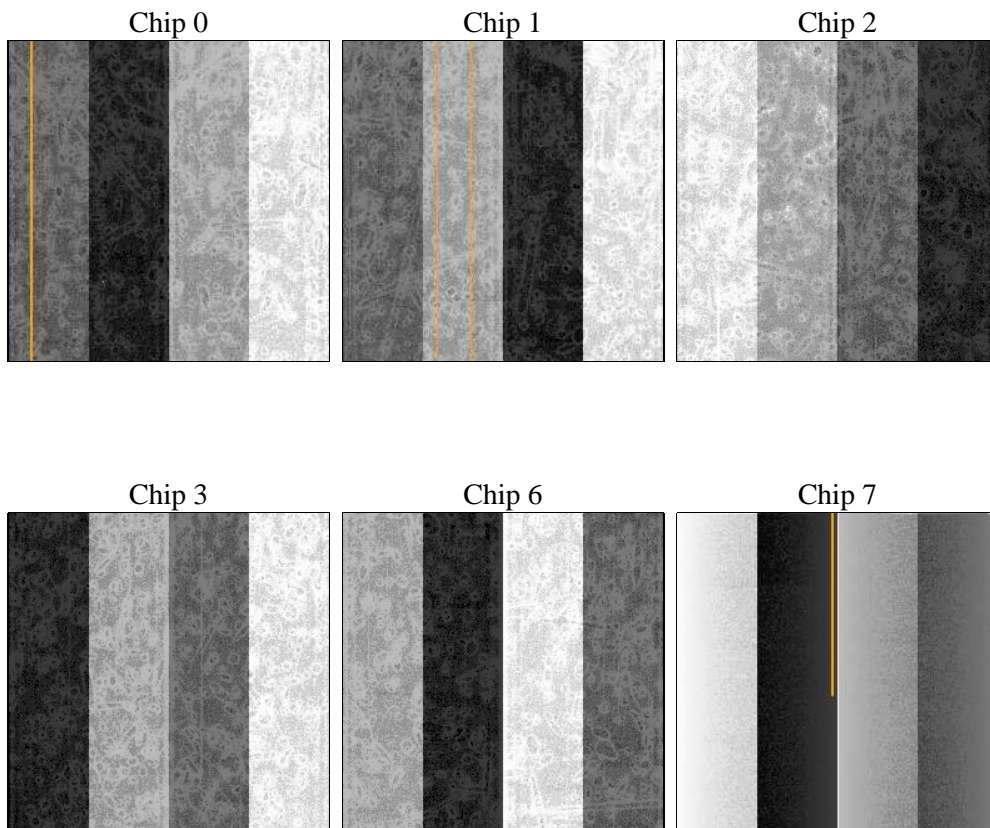
2 OBI

2.1 OBI

2.1.1 Images



2.1.2 Bias



2.1.3 Parameters

obi_num	2	Obi number	sched_exp_time	0.0	[s] Scheduled observation exposure time
ascdsver	8.4.5	Processing system revision	ontime	5310.6691466868	Sum of GTIs [s]
caldbver	4.5.1.1	 	ontime0	2210.3877186328	Sum of GTIs [s]
date	2012-08-27T20:18:02	Date and time of file creation	ontime1	2252.520969227	Sum of GTIs [s]
revision	5	Processing version of data	ontime2	2158.5309291631	Sum of GTIs [s]
			ontime3	2116.3975189775	Sum of GTIs [s]
			ontime6	2338.5053661615	Sum of GTIs [s]
			ontime7	5310.6691466868	Sum of GTIs [s]
			l1events	1532688	Number of level 1 events

2.1.4 Events

	ccd 0	ccd 1	ccd 2	ccd 3	ccd 6	ccd 7		ccd 0	ccd 1	ccd 2	ccd 3	ccd 6	ccd 7
level 1 events	203394	207511	203212	200297	228031	490243	grade 0 events	101618	103760	102018	100294	112673	117984
rejected events	20932	20757	21734	22461	23390	32670		49%	50%	50%	50%	49%	24%
rejected %	10%	10%	10%	11%	10%	6%	grade 1 events	605	620	637	633	690	334
								0%	0%	0%	0%	0%	0%
							grade 2 events	32399	33175	31981	31335	35273	101695
								15%	15%	15%	15%	15%	20%
							grade 3 events	11621	11861	11479	11437	12697	47197
								5%	5%	5%	5%	5%	9%
							grade 4 events	11501	11990	11530	11422	12939	46758
								5%	5%	5%	5%	5%	9%
							grade 5 events	1405	1468	1440	1422	1606	6633
								0%	0%	0%	0%	0%	1%
							grade 6 events	26908	27543	25822	24938	33120	147848
								13%	13%	12%	12%	14%	30%
							grade 7 events	17337	17094	18305	18816	19033	21794
								8%	8%	9%	9%	8%	4%

2.2 Compared Parameters

Parameter	Planned	Actual
Instrument	ACIS	ACIS
Detector	ACIS-012367	ACIS-012367
Grating	NONE	NONE
Data mode	FAINT	FAINT
Observation mode	SECONDARY	SECONDARY
[deg] Pointing RA	0	10.87562707372862
[deg] Pointing Dec	0	-58.24693898967959
[deg] Pointing Roll	0.0	141.3649325439175
[mm] SIM focus pos	-0.782348	-0.7809083437167272
[mm] SIM defocus	0	0.7524282956875696
[mm] SIM translation stage pos	-233.592463	250.466033080201
[mm] SIM translation stage offset	0	-0.01005468664627074
[s] Observation start time (MET)	74724820.30832399	74724819.539857
Observation start date	2000-05-14T20:53:40	2000-05-14T20:53:39
[s] Observation end time (MET)	74749451.059229	74749450.29076201
Observation end date	2000-05-15T03:44:11	2000-05-15T03:44:10
Read mode	TIMED	TIMED

Parameter	Planned	Actual
Obspar format version number	7	7
Obspar file type	PREDICTED	ACTUAL
Obspar update status	NONE	UPDATED
On-chip summing requested	N	N
Subarray requested	NONE	NONE
Alternating exposures requested	N	N
[s] Primary exposure time	3.2	3.2

2.3 Star Slots

2.4 FID Slots

A Summary

A.1 Status

V&V Scientist	Jen Lauer
V&V Date (YYYY-MM-DD)	2012.08.30
V&V Edition	1
V&V Disposition and Status	OK
V&V Charge Time	5.3106691466868

A.2 Comments