

V&V Reference Report

L2 ASCDS Version : 8.4.5

Observation 62048 - L2 Version 5
Chandra X-Ray Center

L2 Processing Date : Aug 28 2012

Contents

1	Front	2
2	OBI	3
2.1	OBI	3
2.1.1	Images	3
2.1.2	Bias	3
2.1.3	Parameters	4
2.1.4	Events	4
2.2	Compared Parameters	5
2.3	Star Slots	6
2.4	FID Slots	6
A	Summary	7
A.1	Status	7
A.2	Comments	7

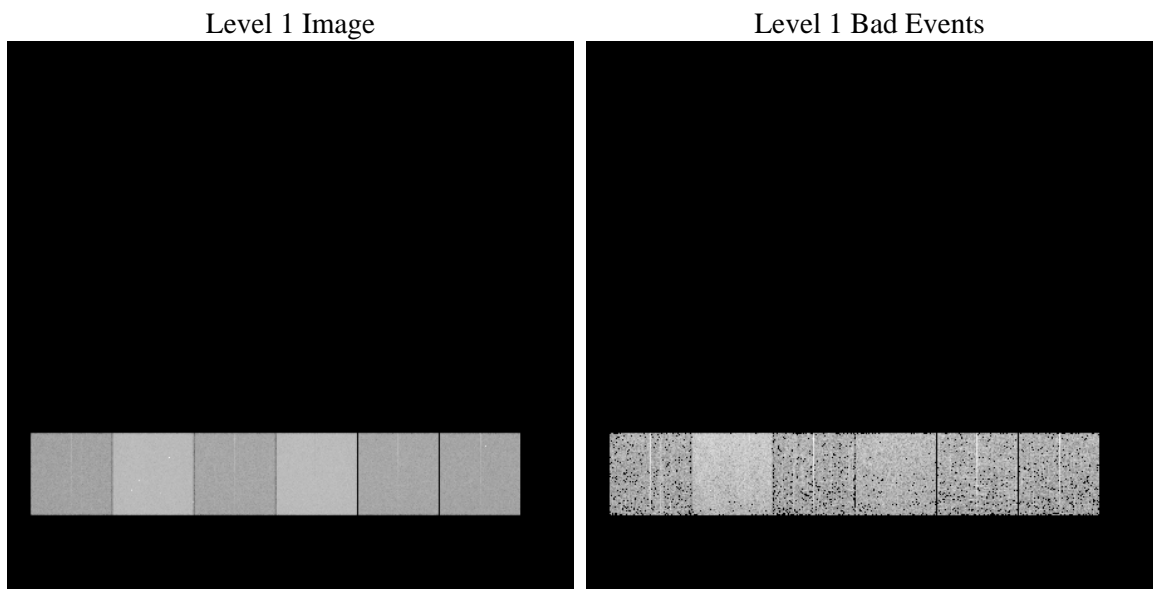
1 Front

seq_num	 	Sequence number
obs_id	62048	Observation id
title	ACIS-456789 diagnostics	Proposal title
observer	CHANDRA engineering request/realtime commanding	Principal investig
object	 	Source name
dtcycle	0	
cycle	P	events from which exps? Prim/Second/Both
ra_targ	0.0	Observer's specified target RA [deg]
dec_targ	0.0	Observer's specified target Dec [deg]
ra_nom	19.440073934837	Nominal RA [deg]
dec_nom	-61.397562489514	Nominal Dec [deg]
roll_nom	142.89070576357	Nominal Roll [deg]
revision	5	Processing version of data
ontime	4066.4071955234	Sum of GTIs [s]
livetime	4014.9158991172	Livetime [s]
ontime4	1697.0811388791	Sum of GTIs [s]
ontime5	4348.3717429787	Sum of GTIs [s]
ontime6	1843.0661841929	Sum of GTIs [s]
ontime7	4066.4071955234	Sum of GTIs [s]
ontime8	1894.9229337424	Sum of GTIs [s]
ontime9	1781.4864841849	Sum of GTIs [s]
l2events	1229200	Number of level 2 events

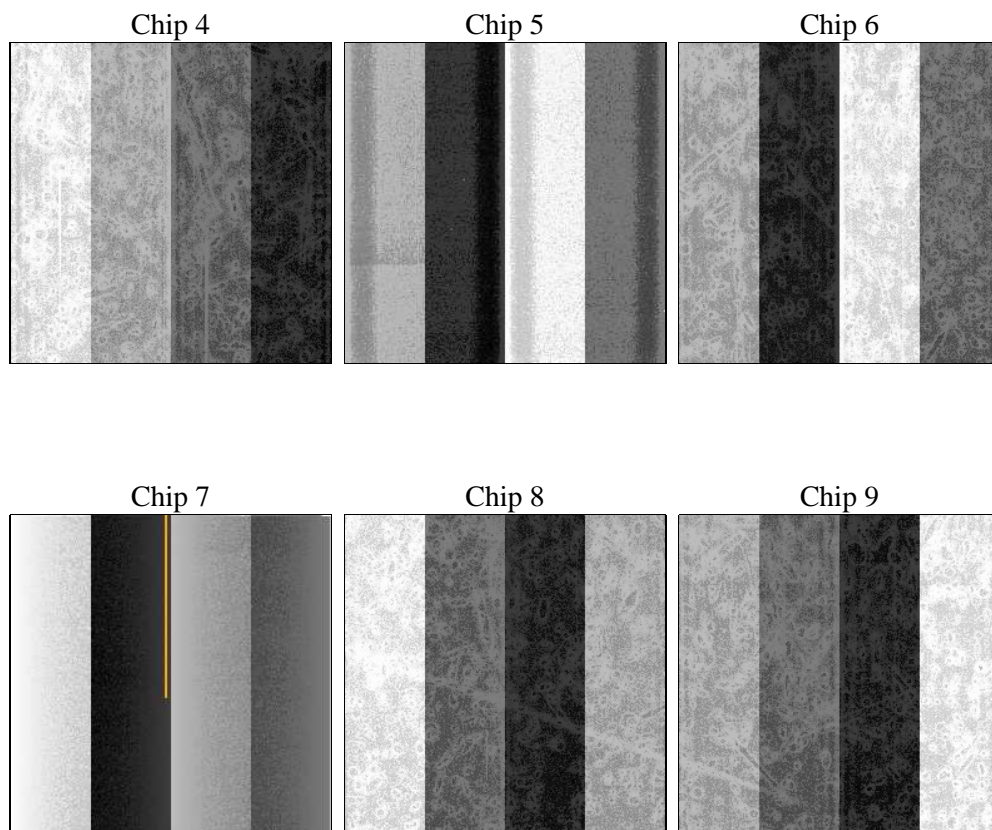
2 OBI

2.1 OBI

2.1.1 Images



2.1.2 Bias



2.1.3 Parameters

obi_num	0	Obi number	sched_exp_time	0.0	[s] Scheduled observation exposure time
ascdsver	8.4.5	Processing system revision	ontime	4066.4071955234	Sum of GTIs [s]
caldsver	4.5.1.1	 	ontime4	1697.0811388791	Sum of GTIs [s]
date	2012-08-28T06:36:58	Date and time of file creation	ontime5	4348.3717429787	Sum of GTIs [s]
revision	5	Processing version of data	ontime6	1843.0661841929	Sum of GTIs [s]
			ontime7	4066.4071955234	Sum of GTIs [s]
			ontime8	1894.9229337424	Sum of GTIs [s]
			ontime9	1781.4864841849	Sum of GTIs [s]
			l1events	1402913	Number of level 1 events

2.1.4 Events

	ccd 4	ccd 5	ccd 6	ccd 7	ccd 8	ccd 9		ccd 4	ccd 5	ccd 6	ccd 7	ccd 8	ccd 9
level 1 events	152726	356825	176739	368971	182290	165362	grade 0 events	77915	87878	87910	90333	90904	82465
rejected events	15775	32091	16543	20866	18219	16174		51%	24%	49%	24%	49%	49%
rejected %	10%	8%	9%	5%	9%	9%	grade 1 events	459	266	476	224	469	465
								0%	0%	0%	0%	0%	0%
							grade 2 events	23899	109244	27615	77586	28993	26398
								15%	30%	15%	21%	15%	15%
							grade 3 events	8397	22639	9845	35939	10456	9168
								5%	6%	5%	9%	5%	5%
							grade 4 events	8289	22549	9916	35664	10430	9230
								5%	6%	5%	9%	5%	5%
							grade 5 events	1126	6691	1269	4807	1409	1247
								0%	1%	0%	1%	0%	0%
							grade 6 events	18451	82644	25196	108845	23566	22224
								12%	23%	14%	29%	12%	13%
							grade 7 events	14190	24914	14512	15573	16063	14165
								9%	6%	8%	4%	8%	8%

2.2 Compared Parameters

Parameter	Planned	Actual
Instrument	ACIS	ACIS
Detector	ACIS-456789	ACIS-456789
Grating	NONE	NONE
Data mode	FAINT	FAINT
Observation mode	SECONDARY	SECONDARY
[deg] Pointing RA	0	19.44007393483696
[deg] Pointing Dec	0	-61.39756248951387
[deg] Pointing Roll	0.0	142.8907057635722
[mm] SIM focus pos	-0.684267	-0.6828225247311905
[mm] SIM defocus	0	0.8505141146731063
[mm] SIM translation stage pos	-190.132523	250.466033080201
[mm] SIM translation stage offset	0	-0.01005468664627074
[s] Observation start time (MET)	75381054.03200001	75381053.263963
Observation start date	2000-05-22T11:10:54	2000-05-22T11:10:53
[s] Observation end time (MET)	75419782.634	75419781.865385
Observation end date	2000-05-22T21:56:23	2000-05-22T21:56:21
Read mode	TIMED	TIMED

Parameter	Planned	Actual
Obspar format version number	7	7
Obspar file type	PREDICTED	ACTUAL
Obspar update status	NONE	UPDATED
On-chip summing requested	N	N
Subarray requested	NONE	NONE
Alternating exposures requested	N	N
[s] Primary exposure time	0.000000	3.2

2.3 Star Slots

2.4 FID Slots

A Summary

A.1 Status

V&V Scientist	Jen Lauer
V&V Date (YYYY-MM-DD)	2012.08.30
V&V Edition	1
V&V Disposition and Status	OK
V&V Charge Time	4.0664071955234

A.2 Comments