

# V&V Reference Report

## L2 ASCDS Version : 8.4.5

Observation 62029 - L2 Version 5  
Chandra X-Ray Center

L2 Processing Date : Aug 28 2012

## Contents

<b>1</b>	<b>Front</b>	<b>2</b>
<b>2</b>	<b>OBI</b>	<b>3</b>
2.1	OBI . . . . .	3
2.1.1	Images . . . . .	3
2.1.2	Bias . . . . .	3
2.1.3	Parameters . . . . .	4
2.1.4	Events . . . . .	4
2.2	Compared Parameters . . . . .	5
2.3	Star Slots . . . . .	6
2.4	FID Slots . . . . .	6
<b>A</b>	<b>Summary</b>	<b>7</b>
A.1	Status . . . . .	7
A.2	Comments . . . . .	7

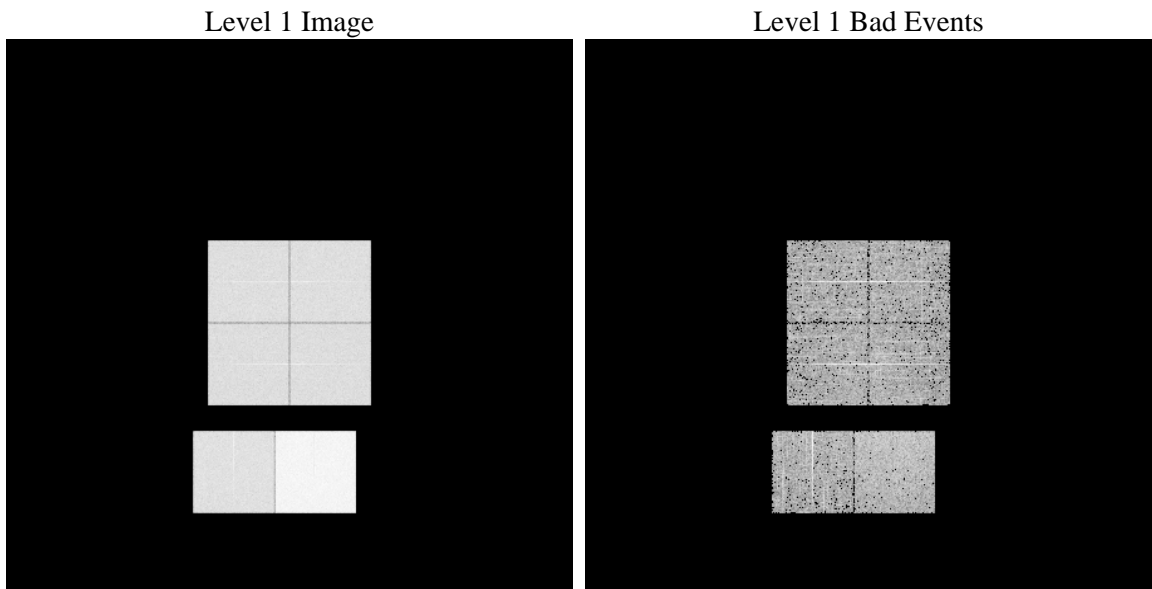
# 1 Front

seq_num	&#160	Sequence number
obs_id	62029	Observation id
title	ACIS-012367 diagnostics	Proposal title
observer	CHANDRA engineering request/realtime commanding	Principal investig
object	&#160	Source name
dtcycle	0	&#160
cycle	P	events from which exps? Prim/Second/Both
ra_targ	0.0	Observer's specified target RA [deg]
dec_targ	0.0	Observer's specified target Dec [deg]
ra_nom	93.201657024696	Nominal RA [deg]
dec_nom	-69.83056067302	Nominal Dec [deg]
roll_nom	193.11002624933	Nominal Roll [deg]
revision	5	Processing version of data
ontime	5204.6667115837	Sum of GTIs [s]
livetime	5138.7620878076	Livetime [s]
ontime0	2356.2343288958	Sum of GTIs [s]
ontime1	2368.70508793	Sum of GTIs [s]
ontime2	2220.1107689589	Sum of GTIs [s]
ontime3	2223.3517591059	Sum of GTIs [s]
ontime6	2414.573068738	Sum of GTIs [s]
ontime7	5204.6667115837	Sum of GTIs [s]
l2events	1349122	Number of level 2 events

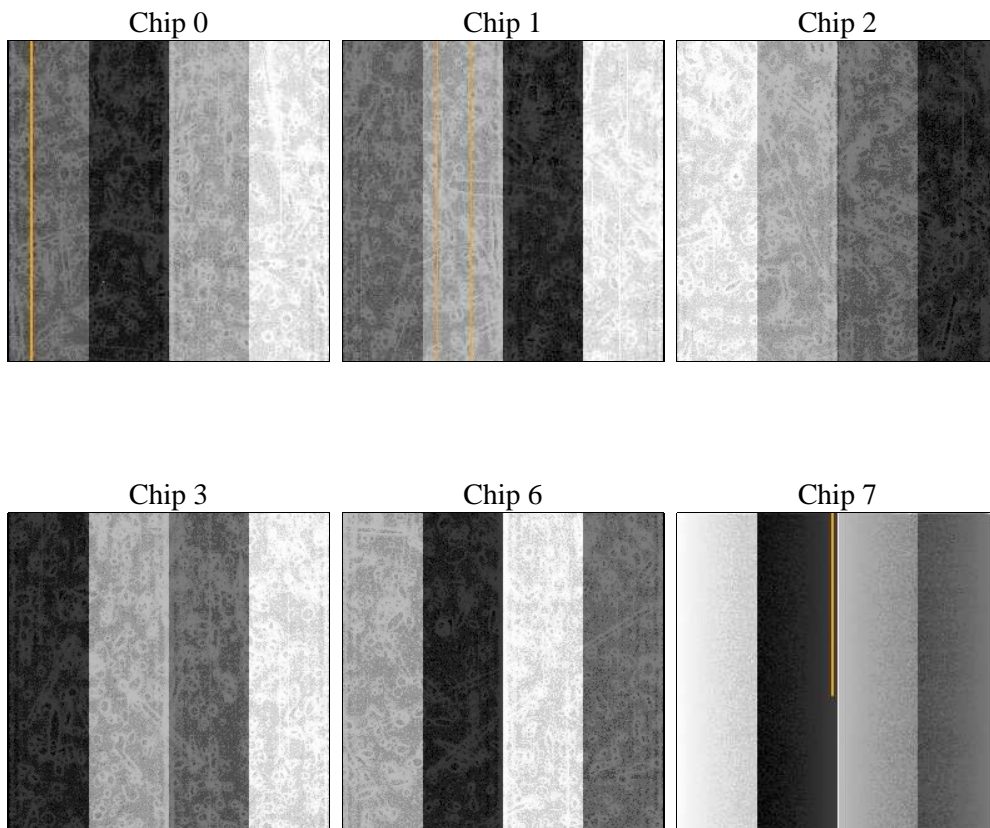
## 2 OBI

### 2.1 OBI

#### 2.1.1 Images



#### 2.1.2 Bias



### 2.1.3 Parameters

obi_num	0	Obi number	sched_exp_time	0.0	[s] Scheduled observation exposure time
ascdsver	8.4.5	Processing system revision	ontime	5204.6667115837	Sum of GTIs [s]
caldbver	4.5.1.1	&#160	ontime0	2356.2343288958	Sum of GTIs [s]
date	2012-08-29T01:42:04	Date and time of file creation	ontime1	2368.70508793	Sum of GTIs [s]
revision	5	Processing version of data	ontime2	2220.1107689589	Sum of GTIs [s]
			ontime3	2223.3517591059	Sum of GTIs [s]
			ontime6	2414.573068738	Sum of GTIs [s]
			ontime7	5204.6667115837	Sum of GTIs [s]
			l1events	1523566	Number of level 1 events

### 2.1.4 Events

	ccd 0	ccd 1	ccd 2	ccd 3	ccd 6	ccd 7		ccd 0	ccd 1	ccd 2	ccd 3	ccd 6	ccd 7
level 1 events	211510	212438	203460	203559	228058	464541	grade 0 events	106561	107535	103540	103446	113734	113774
rejected events	18272	18107	18175	18376	19497	24785		50%	50%	50%	50%	49%	24%
rejected %	8%	8%	8%	9%	8%	5%	grade 1 events	607	523	571	558	617	294
								0%	0%	0%	0%	0%	0%
							grade 2 events	33946	33887	32207	32379	35929	97744
								16%	15%	15%	15%	15%	21%
							grade 3 events	12299	12243	11650	11695	12882	45030
								5%	5%	5%	5%	5%	9%
							grade 4 events	12357	12396	11549	11745	12765	44942
								5%	5%	5%	5%	5%	9%
							grade 5 events	1334	1392	1336	1353	1621	5753
								0%	0%	0%	0%	0%	1%
							grade 6 events	28075	28270	26339	25918	33251	138266
								13%	13%	12%	12%	14%	29%
							grade 7 events	16331	16192	16268	16465	17259	18738
								7%	7%	7%	8%	7%	4%

## 2.2 Compared Parameters

Parameter	Planned	Actual	Parameter	Planned	Actual
Instrument	ACIS	ACIS	Obspar format version number	7	7
Detector	ACIS-012367	ACIS-012367	Obspar file type	PREDICTED	ACTUAL
Grating	NONE	NONE	Obspar update status	NONE	UPDATED
Data mode	FAINT	FAINT	On-chip summing requested	N	N
Observation mode	SECONDARY	SECONDARY	Subarray requested	NONE	NONE
[deg] Pointing RA	0	93.20165702469606	Alternating exposures requested	N	N
[deg] Pointing Dec	0	-69.83056067301951	[s] Primary exposure time	0.000000	3.2
[deg] Pointing Roll	0.0	193.1100262493324			
[mm] SIM focus pos	-0.782348	-0.6828225247311905			
[mm] SIM defocus	0	0.8505141146731063			
[mm] SIM translation stage pos	-233.592463	250.466033080201			
[mm] SIM translation stage offset	0	-0.01005468664627074			
[s] Observation start time (MET)	77027134.39300001	77027133.62452801			
Observation start date	2000-06-10T12:25:34	2000-06-10T12:25:33			
[s] Observation end time (MET)	77037665.243	77037664.474915			
Observation end date	2000-06-10T15:21:05	2000-06-10T15:21:04			
Read mode	TIMED	TIMED			

## 2.3 Star Slots

## 2.4 FID Slots

## A Summary

### A.1 Status

V&V Scientist	Jen Lauer
V&V Date (YYYY-MM-DD)	2012.08.31
V&V Edition	1
V&V Disposition and Status	OK
V&V Charge Time	5.2046667115837

### A.2 Comments