

V&V Reference Report

L2 ASCDS Version : 8.4.5

Observation 62007 - L2 Version 5
Chandra X-Ray Center

L2 Processing Date : Aug 30 2012

Contents

| | | |
|----------|-------------------------------|----------|
| 1 | Front | 2 |
| 2 | OBI | 3 |
| 2.1 | OBI | 3 |
| 2.1.1 | Images | 3 |
| 2.1.2 | Bias | 3 |
| 2.1.3 | Parameters | 4 |
| 2.1.4 | Events | 4 |
| 2.2 | Compared Parameters | 5 |
| 2.3 | Star Slots | 6 |
| 2.4 | FID Slots | 6 |
| A | Summary | 7 |
| A.1 | Status | 7 |
| A.2 | Comments | 7 |

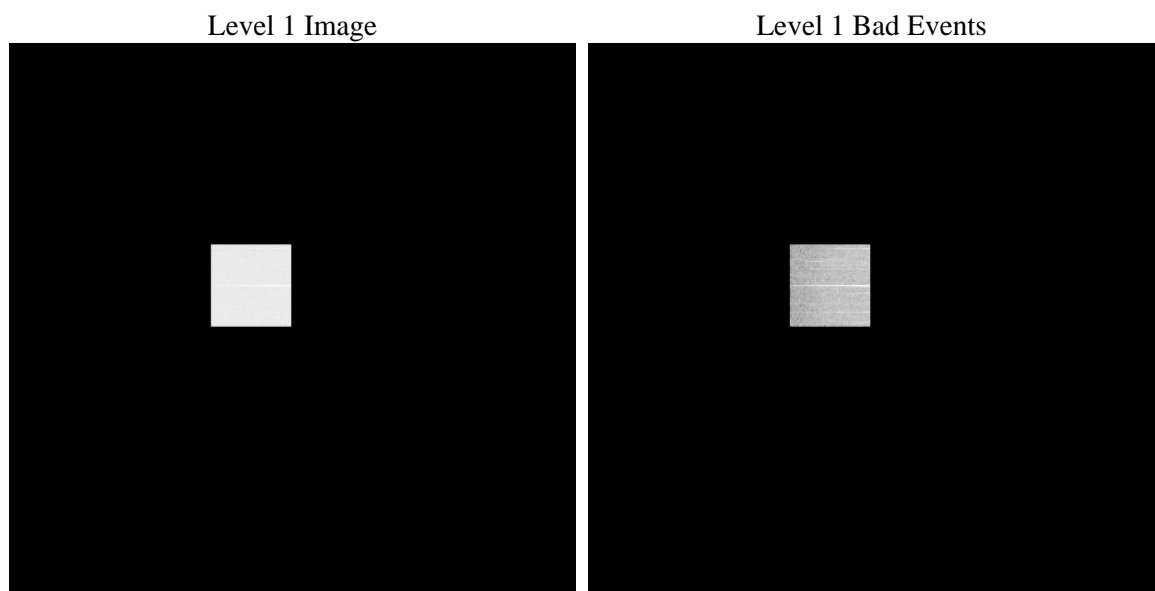
1 Front

| | | |
|----------|---|---|
| seq_num | | Sequence number |
| obs_id | 62007 | Observation id |
| title | ACIS-0 diagnostics; squeegee L4 | Proposal title |
| observer | CHANDRA engineering request/realtime commanding | Principal investig |
| object | | Source name |
| dtcycle | 0 | |
| cycle | P | events from which exps? Prim/Second/Both |
| ra_targ | 0.0 | Observer's specified target RA [deg] |
| dec_targ | 0.0 | Observer's specified target Dec [deg] |
| ra_nom | 140.96811459223 | Nominal RA [deg] |
| dec_nom | -61.576847783406 | Nominal Dec [deg] |
| roll_nom | 216.32208100283 | Nominal Roll [deg] |
| revision | 5 | Processing version of data |
| ontime | 8968.9541032314 | Sum of GTIs [s] |
| livetime | 8858.7830557742 | Livetime [s] |
| ontime0 | 8968.9541032314 | Sum of GTIs [s] |
| l2events | 572215 | Number of level 2 events |

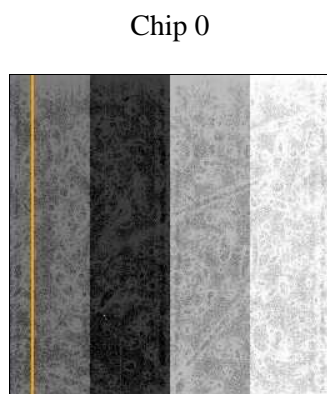
2 OBI

2.1 OBI

2.1.1 Images



2.1.2 Bias



2.1.3 Parameters

| | | | | | |
|----------|---------------------|--------------------------------|----------------|-----------------|---|
| obi_num | 0 | Obi number | sched_exp_time | 0.0 | [s] Scheduled observation exposure time |
| ascdsver | 8.4.5 | Processing system revision | ontime | 8968.9541032314 | Sum of GTIs [s] |
| caldsver | 4.5.1.1 | | ontime0 | 8968.9541032314 | Sum of GTIs [s] |
| date | 2012-08-30T02:57:08 | Date and time of file creation | l1events | 705865 | Number of level 1 events |
| revision | 5 | Processing version of data | | | |

2.1.4 Events

| | |
|-----------------|--------------|
| | ccd 0 |
| level 1 events | 705865 |
| rejected events | 91403 |
| rejected % | 12% |

| | |
|----------------|--------------|
| | ccd 0 |
| grade 0 events | 180757 |
| | 25% |
| grade 1 events | 714 |
| | 0% |
| grade 2 events | 277136 |
| | 39% |
| grade 3 events | 19159 |
| | 2% |
| grade 4 events | 19361 |
| | 2% |
| grade 5 events | 5765 |
| | 0% |
| grade 6 events | 118049 |
| | 16% |
| grade 7 events | 84924 |
| | 12% |

2.2 Compared Parameters

| Parameter | Planned | Actual | Parameter | Planned | Actual |
|-----------------------------------|---------------------|----------------------|---------------------------------|-----------|---------|
| Instrument | ACIS | ACIS | Obspar format version number | 7 | 7 |
| Detector | ACIS-0 | ACIS-0 | Obspar file type | PREDICTED | ACTUAL |
| Grating | NONE | NONE | Obspar update status | NONE | UPDATED |
| Data mode | FAINT | FAINT | On-chip summing requested | N | N |
| Observation mode | SECONDARY | SECONDARY | Subarray requested | NONE | NONE |
| [deg] Pointing RA | 0 | 140.9681145922311 | Alternating exposures requested | N | N |
| [deg] Pointing Dec | 0 | -61.57684778340636 | [s] Primary exposure time | 0.000000 | 3.3 |
| [deg] Pointing Roll | 0.0 | 216.3220810028272 | | | |
| [mm] SIM focus pos | -0.782348 | -0.6828225247311905 | | | |
| [mm] SIM defocus | 0 | 0.8505141146731063 | | | |
| [mm] SIM translation stage pos | -233.592463 | 250.466033080201 | | | |
| [mm] SIM translation stage offset | 0 | -0.01005468664627074 | | | |
| [s] Observation start time (MET) | 78854625.41 | 78854624.641883 | | | |
| Observation start date | 2000-07-01T16:03:45 | 2000-07-01T16:03:44 | | | |
| [s] Observation end time (MET) | 78865133.711 | 78865132.94227 | | | |
| Observation end date | 2000-07-01T18:58:54 | 2000-07-01T18:58:52 | | | |
| Read mode | TIMED | TIMED | | | |

2.3 Star Slots

2.4 FID Slots

A Summary

A.1 Status

| | |
|----------------------------|-----------------|
| V&V Scientist | Jen Lauer |
| V&V Date (YYYY-MM-DD) | 2012.09.04 |
| V&V Edition | 1 |
| V&V Disposition and Status | OK |
| V&V Charge Time | 8.9689541032314 |

A.2 Comments