

V&V Reference Report

L2 ASCDS Version : 8.4.5

Observation 62005 - L2 Version 5
Chandra X-Ray Center

L2 Processing Date : Aug 30 2012

Contents

1	Front	2
2	OBI	3
2.1	OBI	3
2.1.1	Images	3
2.1.2	Bias	3
2.1.3	Parameters	4
2.1.4	Events	4
2.2	Compared Parameters	5
2.3	Star Slots	6
2.4	FID Slots	6
A	Summary	7
A.1	Status	7
A.2	Comments	7

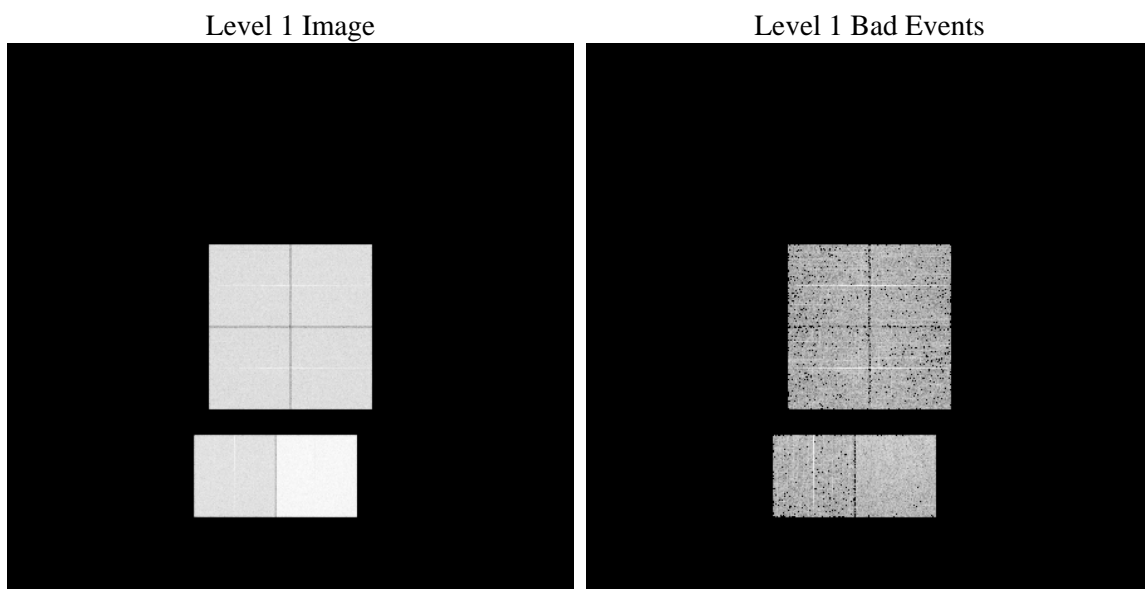
1 Front

seq_num	 	Sequence number
obs_id	62005	Observation id
title	ACIS-012367 diagnostics	Proposal title
observer	CHANDRA engineering request/realtime commanding	Principal investig
object	 	Source name
dtcycle	0	
cycle	P	events from which exps? Prim/Second/Both
ra_targ	0.0	Observer's specified target RA [deg]
dec_targ	0.0	Observer's specified target Dec [deg]
ra_nom	149.9881109644	Nominal RA [deg]
dec_nom	-50.02773935031	Nominal Dec [deg]
roll_nom	222.17539508216	Nominal Roll [deg]
revision	5	Processing version of data
ontime	5643.1990964115	Sum of GTIs [s]
livetime	5571.7415115262	Livetime [s]
ontime0	2314.1008487791	Sum of GTIs [s]
ontime1	2402.1166191697	Sum of GTIs [s]
ontime2	2239.5570985079	Sum of GTIs [s]
ontime3	2262.8753684312	Sum of GTIs [s]
ontime6	2499.2658485472	Sum of GTIs [s]
ontime7	5643.1990964115	Sum of GTIs [s]
l2events	1364078	Number of level 2 events

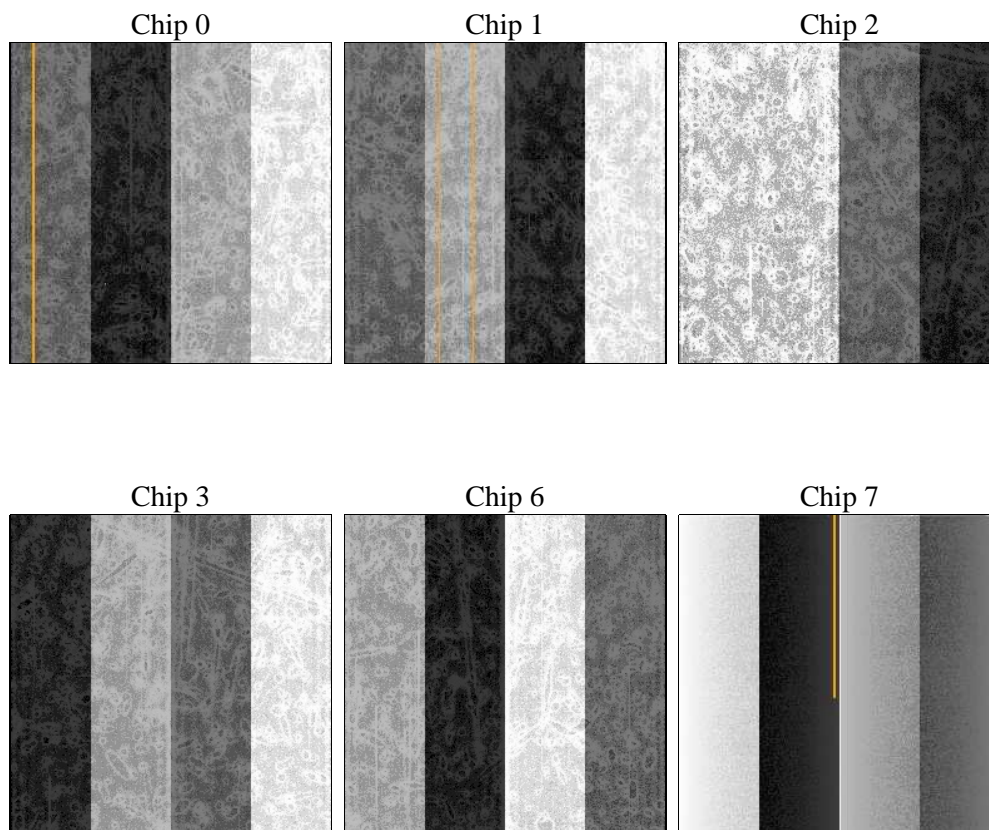
2 OBI

2.1 OBI

2.1.1 Images



2.1.2 Bias



2.1.3 Parameters

obi_num	0	Obi number	sched_exp_time	0.0	[s] Scheduled observation exposure time
ascdsver	8.4.5	Processing system revision	ontime	5643.1990964115	Sum of GTIs [s]
caldbver	4.5.1.1	 	ontime0	2314.1008487791	Sum of GTIs [s]
date	2012-08-30T05:07:33	Date and time of file creation	ontime1	2402.1166191697	Sum of GTIs [s]
revision	5	Processing version of data	ontime2	2239.5570985079	Sum of GTIs [s]
			ontime3	2262.8753684312	Sum of GTIs [s]
			ontime6	2499.2658485472	Sum of GTIs [s]
			ontime7	5643.1990964115	Sum of GTIs [s]
			l1events	1553431	Number of level 1 events

2.1.4 Events

	ccd 0	ccd 1	ccd 2	ccd 3	ccd 6	ccd 7		ccd 0	ccd 1	ccd 2	ccd 3	ccd 6	ccd 7
level 1 events	204683	213527	201230	204081	232754	497156	grade 0 events	102117	107183	100542	102584	115266	119626
rejected events	19673	20393	20233	20477	21993	30005		49%	50%	49%	50%	49%	24%
rejected %	9%	9%	10%	10%	9%	6%	grade 1 events	571	569	595	615	655	320
								0%	0%	0%	0%	0%	0%
							grade 2 events	32791	34033	31704	32327	35995	103067
								16%	15%	15%	15%	15%	20%
							grade 3 events	11482	12267	11512	11519	12986	47964
								5%	5%	5%	5%	5%	9%
							grade 4 events	11672	12105	11287	11669	13190	47445
								5%	5%	5%	5%	5%	9%
							grade 5 events	1451	1518	1418	1427	1740	6618
								0%	0%	0%	0%	0%	1%
							grade 6 events	26948	27800	25952	25783	33627	149346
								13%	13%	12%	12%	14%	30%
							grade 7 events	17651	18052	18220	18157	19295	22770
								8%	8%	9%	8%	8%	4%

2.2 Compared Parameters

Parameter	Planned	Actual	Parameter	Planned	Actual
Instrument	ACIS	ACIS	Obspar format version number	7	7
Detector	ACIS-012367	ACIS-012367	Obspar file type	PREDICTED	ACTUAL
Grating	NONE	NONE	Obspar update status	NONE	UPDATED
Data mode	FAINT	FAINT	On-chip summing requested	N	N
Observation mode	SECONDARY	SECONDARY	Subarray requested	NONE	NONE
[deg] Pointing RA	0	149.9881109643997	Alternating exposures requested	N	N
[deg] Pointing Dec	0	-50.02773935030986	[s] Primary exposure time	3.2	3.2
[deg] Pointing Roll	0.0	222.1753950821608			
[mm] SIM focus pos	-0.782348	-0.7809083437167272			
[mm] SIM defocus	0	0.7524282956875696			
[mm] SIM translation stage pos	-233.592463	250.466033080201			
[mm] SIM translation stage offset	0	-0.01005468664627074			
[s] Observation start time (MET)	79081601.418715	79081600.650251			
Observation start date	2000-07-04T07:06:41	2000-07-04T07:06:40			
[s] Observation end time (MET)	79092111.76910201	79092111.00063799			
Observation end date	2000-07-04T10:01:52	2000-07-04T10:01:51			
Read mode	TIMED	TIMED			

2.3 Star Slots

2.4 FID Slots

A Summary

A.1 Status

V&V Scientist	Jen Lauer
V&V Date (YYYY-MM-DD)	2012.09.04
V&V Edition	1
V&V Disposition and Status	OK
V&V Charge Time	5.6431990964115

A.2 Comments