

V&V Reference Report

L2 ASCDS Version : 8.4.5

Observation 62002 - L2 Version 5
Chandra X-Ray Center

L2 Processing Date : Aug 30 2012

Contents

1	Front	2
2	OBI	3
2.1	OBI	3
2.1.1	Images	3
2.1.2	Bias	3
2.1.3	Parameters	4
2.1.4	Events	4
2.2	Compared Parameters	5
2.3	Star Slots	6
2.4	FID Slots	6
A	Summary	7
A.1	Status	7
A.2	Comments	7

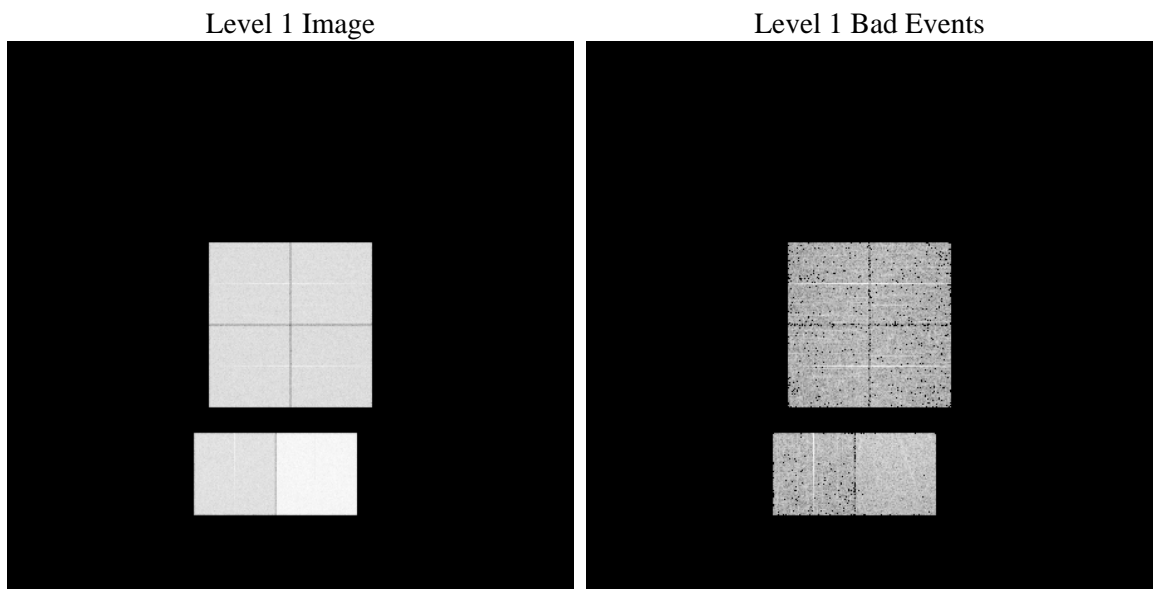
1 Front

seq_num	 	Sequence number
obs_id	62002	Observation id
title	ACIS-012367 diagnostics	Proposal title
observer	CHANDRA engineering request/realtime commanding	Principal investig
object	 	Source name
dtcycle	0	
cycle	P	events from which exps? Prim/Second/Both
ra_targ	0.0	Observer's specified target RA [deg]
dec_targ	0.0	Observer's specified target Dec [deg]
ra_nom	334.09870296474	Nominal RA [deg]
dec_nom	56.555316008136	Nominal Dec [deg]
roll_nom	136.9643224603	Nominal Roll [deg]
revision	5	Processing version of data
ontime	5606.9585455805	Sum of GTIs [s]
livetime	5535.9598603713	Livetime [s]
ontime0	2294.6545889378	Sum of GTIs [s]
ontime1	2382.1628182977	Sum of GTIs [s]
ontime2	2246.0390090495	Sum of GTIs [s]
ontime3	2218.6246541888	Sum of GTIs [s]
ontime6	2502.0808892399	Sum of GTIs [s]
ontime7	5606.9585455805	Sum of GTIs [s]
l2events	1354862	Number of level 2 events

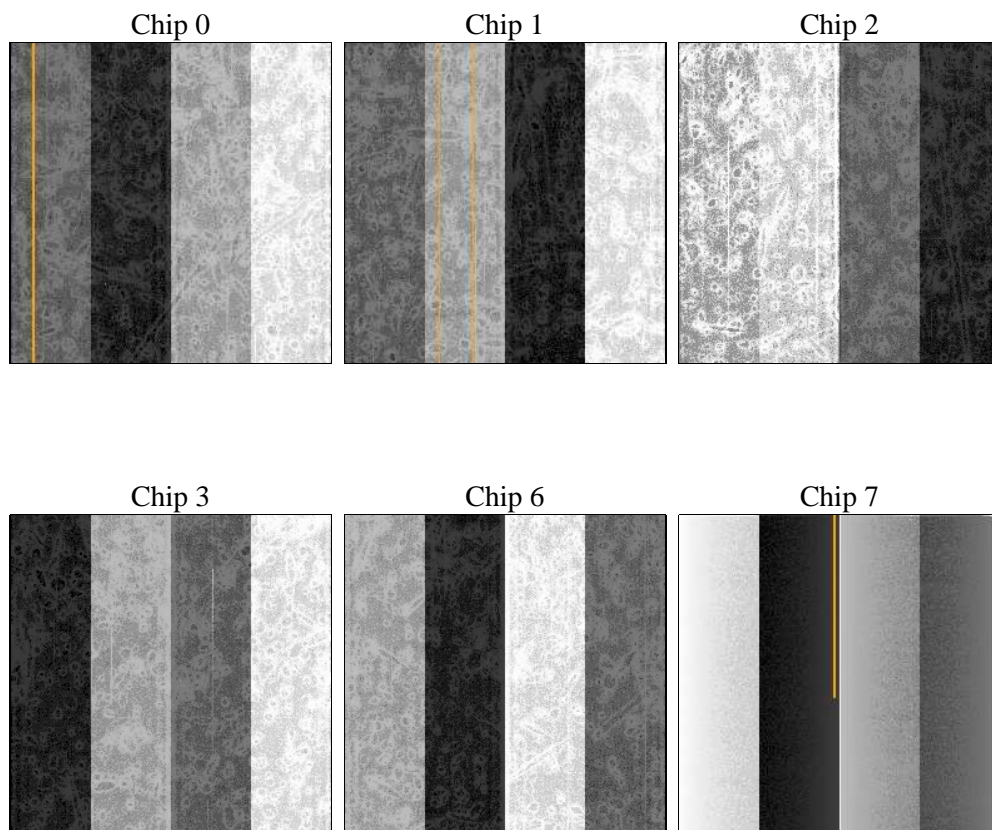
2 OBI

2.1 OBI

2.1.1 Images



2.1.2 Bias



2.1.3 Parameters

obi_num	0	Obi number	sched_exp_time	0.0	[s] Scheduled observation exposure time
ascdsver	8.4.5	Processing system revision	ontime	5606.9585455805	Sum of GTIs [s]
caldbver	4.5.1.1	 	ontime0	2294.6545889378	Sum of GTIs [s]
date	2012-08-30T11:29:45	Date and time of file creation	ontime1	2382.1628182977	Sum of GTIs [s]
revision	5	Processing version of data	ontime2	2246.0390090495	Sum of GTIs [s]
			ontime3	2218.6246541888	Sum of GTIs [s]
			ontime6	2502.0808892399	Sum of GTIs [s]
			ontime7	5606.9585455805	Sum of GTIs [s]
			l1events	1553998	Number of level 1 events

2.1.4 Events

	ccd 0	ccd 1	ccd 2	ccd 3	ccd 6	ccd 7		ccd 0	ccd 1	ccd 2	ccd 3	ccd 6	ccd 7
level 1 events	205021	212734	204331	201385	233695	496832	grade 0 events	102066	106245	102623	102126	116135	119875
rejected events	21432	21615	21755	21706	23314	33348		49%	49%	50%	50%	49%	24%
rejected %	10%	10%	10%	10%	9%	6%	grade 1 events	587	556	538	592	644	331
								0%	0%	0%	0%	0%	0%
							grade 2 events	32752	34115	32151	31350	36276	103681
								15%	16%	15%	15%	15%	20%
							grade 3 events	11683	12056	11599	11473	13194	47945
								5%	5%	5%	5%	5%	9%
							grade 4 events	11710	12315	11631	11215	13195	47437
								5%	5%	5%	5%	5%	9%
							grade 5 events	1425	1514	1358	1476	1683	6621
								0%	0%	0%	0%	0%	1%
							grade 6 events	27009	27704	26111	25060	33472	148339
								13%	13%	12%	12%	14%	29%
							grade 7 events	17789	18229	18320	18093	19096	22603
								8%	8%	8%	8%	8%	4%

2.2 Compared Parameters

Parameter	Planned	Actual
Instrument	ACIS	ACIS
Detector	ACIS-012367	ACIS-012367
Grating	NONE	NONE
Data mode	FAINT	FAINT
Observation mode	SECONDARY	SECONDARY
[deg] Pointing RA	0	334.0987029647411
[deg] Pointing Dec	0	56.55531600813578
[deg] Pointing Roll	0.0	136.9643224602954
[mm] SIM focus pos	-0.782348	-0.7809083437167272
[mm] SIM defocus	0	0.7524282956875696
[mm] SIM translation stage pos	-233.592463	250.466033080201
[mm] SIM translation stage offset	0	-0.01005468664627074
[s] Observation start time (MET)	79307644.677	79307643.90857799
Observation start date	2000-07-06T21:54:05	2000-07-06T21:54:03
[s] Observation end time (MET)	79318155.027	79318154.258966
Observation end date	2000-07-07T00:49:15	2000-07-07T00:49:14
Read mode	TIMED	TIMED

Parameter	Planned	Actual
Obspar format version number	7	7
Obspar file type	PREDICTED	ACTUAL
Obspar update status	NONE	UPDATED
On-chip summing requested	N	N
Subarray requested	NONE	NONE
Alternating exposures requested	N	N
[s] Primary exposure time	0.000000	3.2

2.3 Star Slots

2.4 FID Slots

A Summary

A.1 Status

V&V Scientist	Jen Lauer
V&V Date (YYYY-MM-DD)	2012.09.04
V&V Edition	1
V&V Disposition and Status	OK
V&V Charge Time	5.6069585455805

A.2 Comments