

# V&V Reference Report

## L2 ASCDS Version : 8.4.5

Observation 62001 - L2 Version 5  
Chandra X-Ray Center

L2 Processing Date : Aug 30 2012

## Contents

<b>1</b>	<b>Front</b>	<b>2</b>
<b>2</b>	<b>OBI</b>	<b>3</b>
2.1	OBI . . . . .	3
2.1.1	Images . . . . .	3
2.1.2	Bias . . . . .	3
2.1.3	Parameters . . . . .	4
2.1.4	Events . . . . .	4
2.2	Compared Parameters . . . . .	5
2.3	Star Slots . . . . .	6
2.4	FID Slots . . . . .	6
<b>A</b>	<b>Summary</b>	<b>7</b>
A.1	Status . . . . .	7
A.2	Comments . . . . .	7

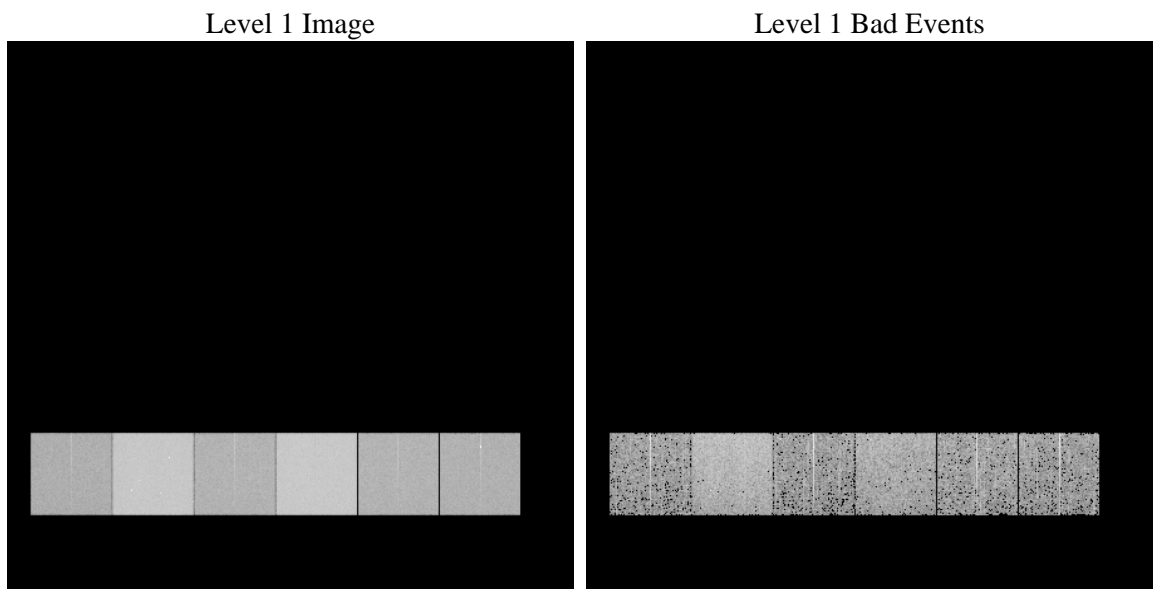
# 1 Front

seq_num	&#160	Sequence number
obs_id	62001	Observation id
title	ACIS-456789 diagnostics	Proposal title
observer	CHANDRA engineering request/realtime commanding	Principal investig
object	&#160	Source name
dtcycle	0	&#160
cycle	P	events from which exps? Prim/Second/Both
ra_targ	0.0	Observer's specified target RA [deg]
dec_targ	0.0	Observer's specified target Dec [deg]
ra_nom	334.09849376987	Nominal RA [deg]
dec_nom	56.55442203087	Nominal Dec [deg]
roll_nom	138.74734881498	Nominal Roll [deg]
revision	5	Processing version of data
ontime	4329.7878217399	Sum of GTIs [s]
livetime	4274.9614412558	Livetime [s]
ontime4	1743.4544965923	Sum of GTIs [s]
ontime5	4646.8878649771	Sum of GTIs [s]
ontime6	1940.6830821484	Sum of GTIs [s]
ontime7	4329.7878217399	Sum of GTIs [s]
ontime8	1953.7294018567	Sum of GTIs [s]
ontime9	1882.2212323844	Sum of GTIs [s]
l2events	1255038	Number of level 2 events

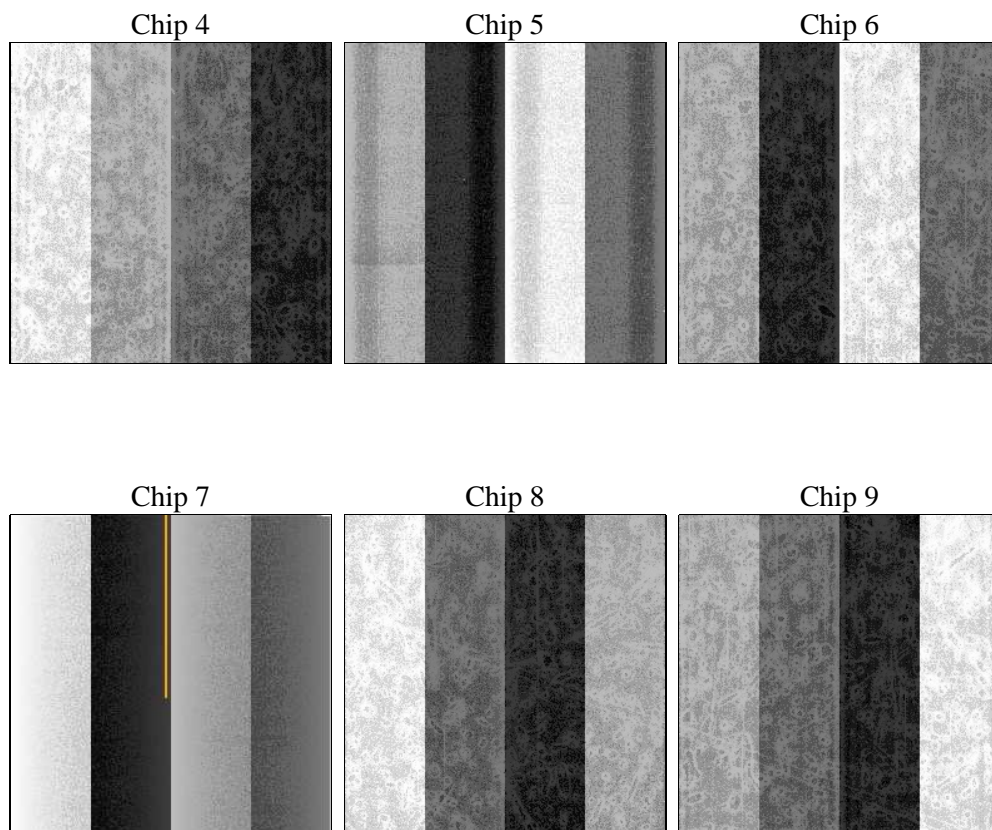
## 2 OBI

### 2.1 OBI

#### 2.1.1 Images



#### 2.1.2 Bias



### 2.1.3 Parameters

obi_num	0	Obi number	sched_exp_time	0.0	[s] Scheduled observation exposure time
ascdsver	8.4.5	Processing system revision	ontime	4329.7878217399	Sum of GTIs [s]
caldsver	4.5.1.1	&#160	ontime4	1743.4544965923	Sum of GTIs [s]
date	2012-08-30T11:46:19	Date and time of file creation	ontime5	4646.8878649771	Sum of GTIs [s]
revision	5	Processing version of data	ontime6	1940.6830821484	Sum of GTIs [s]
			ontime7	4329.7878217399	Sum of GTIs [s]
			ontime8	1953.7294018567	Sum of GTIs [s]
			ontime9	1882.2212323844	Sum of GTIs [s]
			l1events	1435117	Number of level 1 events

### 2.1.4 Events

	ccd 4	ccd 5	ccd 6	ccd 7	ccd 8	ccd 9		ccd 4	ccd 5	ccd 6	ccd 7	ccd 8	ccd 9
level 1 events	152967	369706	179948	381513	182215	168768	grade 0 events	76993	88775	89513	93057	89979	83624
rejected events	17207	33860	16657	22902	18909	16661		50%	24%	49%	24%	49%	49%
rejected %	11%	9%	9%	6%	10%	9%	grade 1 events	483	338	446	224	508	467
								0%	0%	0%	0%	0%	0%
							grade 2 events	23849	113591	28558	79720	28910	27076
								15%	30%	15%	20%	15%	16%
							grade 3 events	8386	23296	10004	37061	10374	9262
								5%	6%	5%	9%	5%	5%
							grade 4 events	8373	23242	10073	36463	10232	9383
								5%	6%	5%	9%	5%	5%
							grade 5 events	1189	7150	1309	5184	1427	1285
								0%	1%	0%	1%	0%	0%
							grade 6 events	18422	86942	25143	112577	23811	22762
								12%	23%	13%	29%	13%	13%
							grade 7 events	15272	26372	14902	17227	16974	14909
								9%	7%	8%	4%	9%	8%

## 2.2 Compared Parameters

Parameter	Planned	Actual
Instrument	ACIS	ACIS
Detector	ACIS-456789	ACIS-456789
Grating	NONE	NONE
Data mode	FAINT	FAINT
Observation mode	SECONDARY	SECONDARY
[deg] Pointing RA	0	334.0984937698669
[deg] Pointing Dec	0	56.55442203086991
[deg] Pointing Roll	0.0	138.7473488149776
[mm] SIM focus pos	-0.684267	-0.6828225247311905
[mm] SIM defocus	0	0.8505141146731063
[mm] SIM translation stage pos	-190.132523	250.466033080201
[mm] SIM translation stage offset	0	-0.01005468664627074
[s] Observation start time (MET)	79492825.28388301	79492824.515402
Observation start date	2000-07-09T01:20:25	2000-07-09T01:20:24
[s] Observation end time (MET)	79540416.035639	79540415.26715
Observation end date	2000-07-09T14:33:36	2000-07-09T14:33:35
Read mode	TIMED	TIMED

Parameter	Planned	Actual
Obspar format version number	7	7
Obspar file type	PREDICTED	ACTUAL
Obspar update status	NONE	UPDATED
On-chip summing requested	N	N
Subarray requested	NONE	NONE
Alternating exposures requested	N	N
[s] Primary exposure time	3.2	3.2

## 2.3 Star Slots

## 2.4 FID Slots

## A Summary

### A.1 Status

V&V Scientist	Jen Lauer
V&V Date (YYYY-MM-DD)	2012.09.04
V&V Edition	1
V&V Disposition and Status	OK
V&V Charge Time	4.3297878217399

### A.2 Comments