

# V&V Reference Report

## L2 ASCDS Version : 8.4.5

Observation 62000 - L2 Version 5  
Chandra X-Ray Center

L2 Processing Date : Aug 30 2012

## Contents

<b>1</b>	<b>Front</b>	<b>2</b>
<b>2</b>	<b>OBI</b>	<b>3</b>
2.1	OBI . . . . .	3
2.1.1	Images . . . . .	3
2.1.2	Bias . . . . .	3
2.1.3	Parameters . . . . .	4
2.1.4	Events . . . . .	4
2.2	Compared Parameters . . . . .	5
2.3	Star Slots . . . . .	6
2.4	FID Slots . . . . .	6
<b>A</b>	<b>Summary</b>	<b>7</b>
A.1	Status . . . . .	7
A.2	Comments . . . . .	7

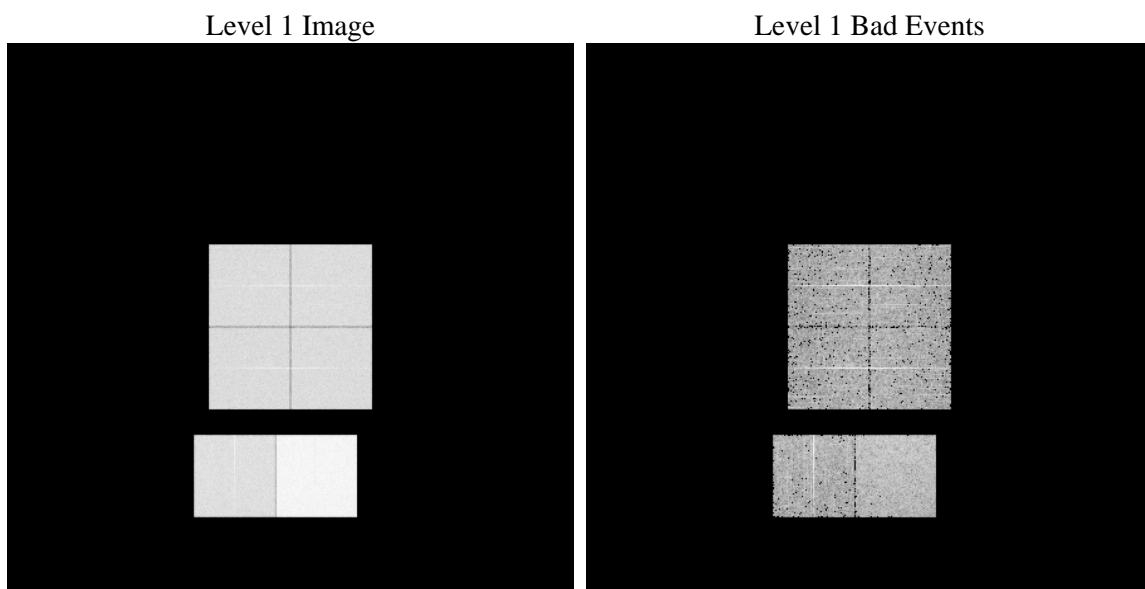
# 1 Front

seq_num	&#160	Sequence number
obs_id	62000	Observation id
title	ACIS-012367 diagnostics	Proposal title
observer	CHANDRA engineering request/realtime commanding	Principal investig
object	&#160	Source name
dtcycle	0	&#160
cycle	P	events from which exps? Prim/Second/Both
ra_targ	0.0	Observer's specified target RA [deg]
dec_targ	0.0	Observer's specified target Dec [deg]
ra_nom	334.09840006376	Nominal RA [deg]
dec_nom	56.554181043793	Nominal Dec [deg]
roll_nom	139.1757773298	Nominal Roll [deg]
revision	5	Processing version of data
ontime	5616.8977778852	Sum of GTIs [s]
livetime	5545.7732361318	Livetime [s]
ontime0	2346.5112487972	Sum of GTIs [s]
ontime1	2375.6805888265	Sum of GTIs [s]
ontime2	2236.3160087317	Sum of GTIs [s]
ontime3	2271.9674386531	Sum of GTIs [s]
ontime6	2489.1168388575	Sum of GTIs [s]
ontime7	5616.8977778852	Sum of GTIs [s]
l2events	1358800	Number of level 2 events

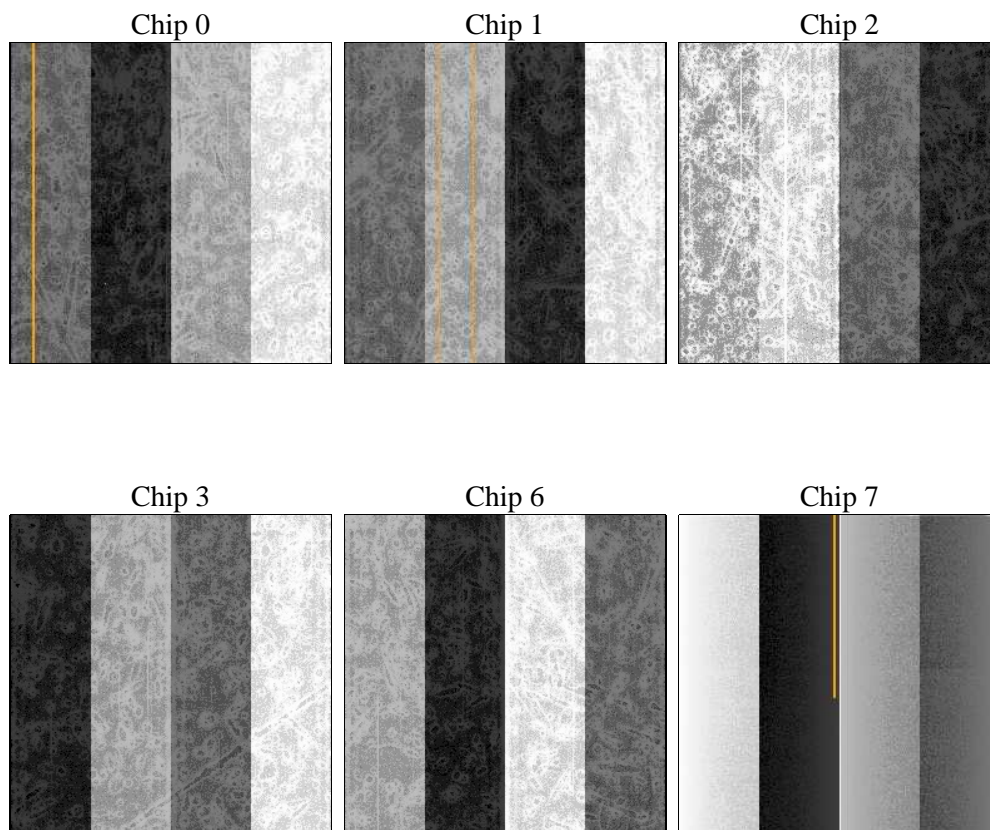
## 2 OBI

### 2.1 OBI

#### 2.1.1 Images



#### 2.1.2 Bias



### 2.1.3 Parameters

obi_num	0	Obi number	sched_exp_time	0.0	[s] Scheduled observation exposure time
ascdsver	8.4.5	Processing system revision	ontime	5616.8977778852	Sum of GTIs [s]
caldsver	4.5.1.1	&#160	ontime0	2346.5112487972	Sum of GTIs [s]
date	2012-08-30T11:49:36	Date and time of file creation	ontime1	2375.6805888265	Sum of GTIs [s]
revision	5	Processing version of data	ontime2	2236.3160087317	Sum of GTIs [s]
			ontime3	2271.9674386531	Sum of GTIs [s]
			ontime6	2489.1168388575	Sum of GTIs [s]
			ontime7	5616.8977778852	Sum of GTIs [s]
			l1events	1553119	Number of level 1 events

### 2.1.4 Events

	ccd 0	ccd 1	ccd 2	ccd 3	ccd 6	ccd 7		ccd 0	ccd 1	ccd 2	ccd 3	ccd 6	ccd 7
level 1 events	207489	210456	201890	205036	232263	495985	grade 0 events	103981	105593	101770	103502	115007	120141
rejected events	20054	20630	20516	21753	23204	31929		50%	50%	50%	50%	49%	24%
rejected %	9%	9%	10%	10%	9%	6%	grade 1 events	579	619	592	568	579	302
								0%	0%	0%	0%	0%	0%
							grade 2 events	32967	33367	31919	32155	35928	103391
								15%	15%	15%	15%	15%	20%
							grade 3 events	11893	12276	11404	11709	13093	48303
								5%	5%	5%	5%	5%	9%
							grade 4 events	11735	12155	11324	11625	13028	47358
								5%	5%	5%	5%	5%	9%
							grade 5 events	1503	1544	1422	1510	1723	6759
								0%	0%	0%	0%	0%	1%
							grade 6 events	27594	27486	25746	25566	33428	147518
								13%	13%	12%	12%	14%	29%
							grade 7 events	17237	17416	17713	18401	19477	22213
								8%	8%	8%	8%	8%	4%

## 2.2 Compared Parameters

Parameter	Planned	Actual
Instrument	ACIS	ACIS
Detector	ACIS-012367	ACIS-012367
Grating	NONE	NONE
Data mode	FAINT	FAINT
Observation mode	SECONDARY	SECONDARY
[deg] Pointing RA	0	334.098400063758
[deg] Pointing Dec	0	56.55418104379329
[deg] Pointing Roll	0.0	139.1757773298013
[mm] SIM focus pos	-0.782348	-0.6828225247311905
[mm] SIM defocus	0	0.8505141146731063
[mm] SIM translation stage pos	-233.592463	250.466033080201
[mm] SIM translation stage offset	0	-0.01005468664627074
[s] Observation start time (MET)	79540416.036	79540415.26715
Observation start date	2000-07-09T14:33:36	2000-07-09T14:33:35
[s] Observation end time (MET)	79550924.336	79550923.56753699
Observation end date	2000-07-09T17:28:44	2000-07-09T17:28:43
Read mode	TIMED	TIMED

Parameter	Planned	Actual
Obspar format version number	7	7
Obspar file type	PREDICTED	ACTUAL
Obspar update status	NONE	UPDATED
On-chip summing requested	N	N
Subarray requested	NONE	NONE
Alternating exposures requested	N	N
[s] Primary exposure time	0.000000	3.2

## **2.3 Star Slots**

## **2.4 FID Slots**

## A Summary

### A.1 Status

V&V Scientist	Jen Lauer
V&V Date (YYYY-MM-DD)	2012.09.04
V&V Edition	1
V&V Disposition and Status	OK
V&V Charge Time	5.6168977778852

### A.2 Comments