

V&V Reference Report

L2 ASCDS Version : 8.4.5

Observation 61997 - L2 Version 5
Chandra X-Ray Center

L2 Processing Date : Aug 30 2012

Contents

1	Front	2
2	OBI	3
2.1	OBI	3
2.1.1	Images	3
2.1.2	Bias	3
2.1.3	Parameters	4
2.1.4	Events	4
2.2	Compared Parameters	5
2.3	Star Slots	6
2.4	FID Slots	6
A	Summary	7
A.1	Status	7
A.2	Comments	7

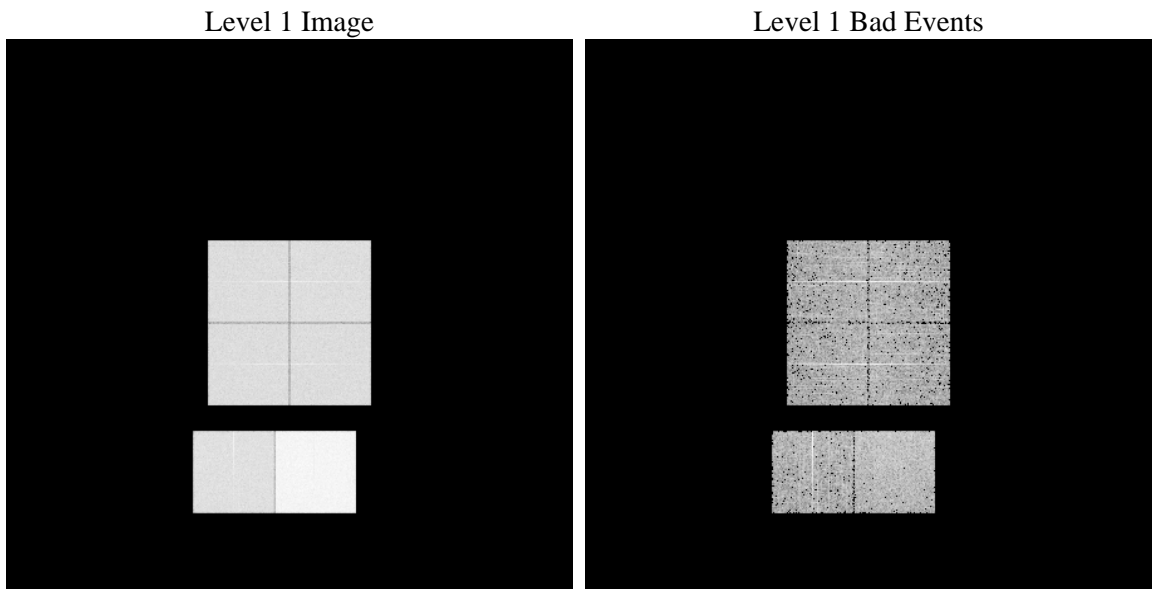
1 Front

seq_num	 	Sequence number
obs_id	61997	Observation id
title	ACIS-012367 diagnostics	Proposal title
observer	CHANDRA engineering request/realtime commanding	Principal investig
object	 	Source name
dtcycle	0	
cycle	P	events from which exps? Prim/Second/Both
ra_targ	0.0	Observer's specified target RA [deg]
dec_targ	0.0	Observer's specified target Dec [deg]
ra_nom	145.41417843864	Nominal RA [deg]
dec_nom	-60.125684969841	Nominal Dec [deg]
roll_nom	211.03473104316	Nominal Roll [deg]
revision	5	Processing version of data
ontime	5567.8966802657	Sum of GTIs [s]
livetime	5497.3926199153	Livetime [s]
ontime0	2375.6805787086	Sum of GTIs [s]
ontime1	2430.7782884687	Sum of GTIs [s]
ontime2	2320.5829586983	Sum of GTIs [s]
ontime3	2304.3776490688	Sum of GTIs [s]
ontime6	2515.0450789928	Sum of GTIs [s]
ontime7	5567.8966802657	Sum of GTIs [s]
l2events	1368880	Number of level 2 events

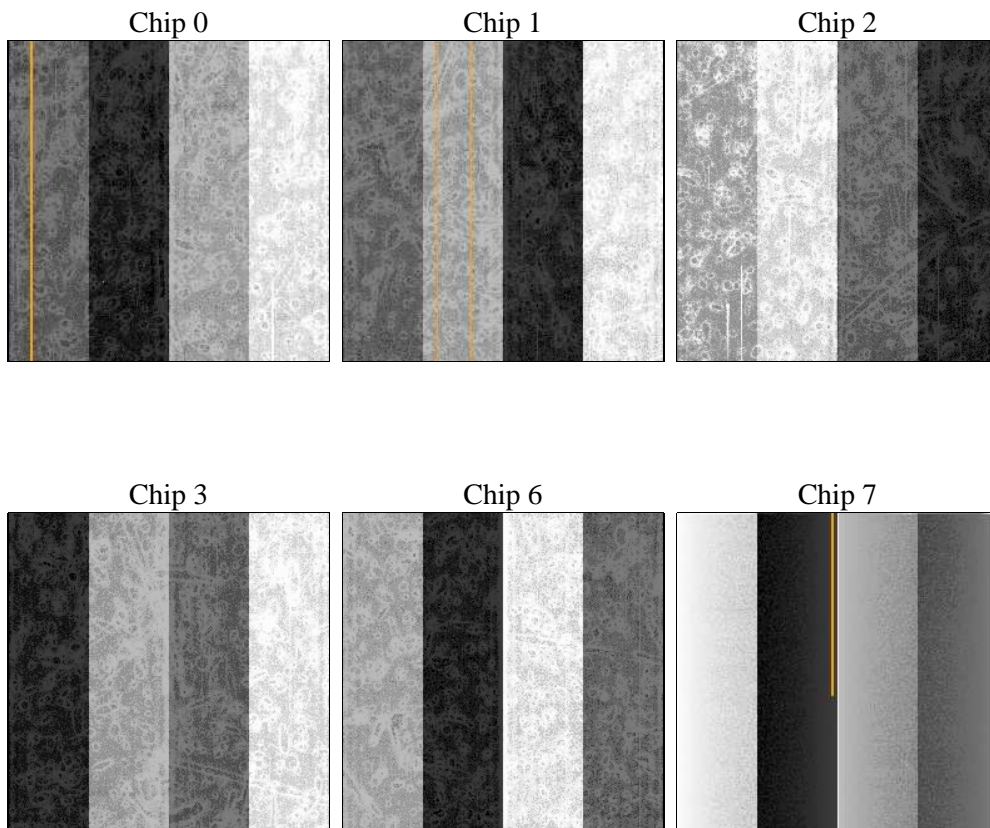
2 OBI

2.1 OBI

2.1.1 Images



2.1.2 Bias



2.1.3 Parameters

obi_num	0	Obi number	sched_exp_time	0.0	[s] Scheduled observation exposure time
ascdsver	8.4.5	Processing system revision	ontime	5567.8966802657	Sum of GTIs [s]
caldbver	4.5.1.1	 	ontime0	2375.6805787086	Sum of GTIs [s]
date	2012-08-30T11:49:54	Date and time of file creation	ontime1	2430.7782884687	Sum of GTIs [s]
revision	5	Processing version of data	ontime2	2320.5829586983	Sum of GTIs [s]
			ontime3	2304.3776490688	Sum of GTIs [s]
			ontime6	2515.0450789928	Sum of GTIs [s]
			ontime7	5567.8966802657	Sum of GTIs [s]
			l1events	1552824	Number of level 1 events

2.1.4 Events

	ccd 0	ccd 1	ccd 2	ccd 3	ccd 6	ccd 7		ccd 0	ccd 1	ccd 2	ccd 3	ccd 6	ccd 7
level 1 events	208058	213961	206896	205721	232639	485549	grade 0 events	104558	107184	104504	104146	115795	118072
rejected events	18978	19955	19306	19717	21021	27615		50%	50%	50%	50%	49%	24%
rejected %	9%	9%	9%	9%	9%	5%	grade 1 events	608	550	576	561	576	308
								0%	0%	0%	0%	0%	0%
							grade 2 events	33178	33823	32815	32413	36352	101262
								15%	15%	15%	15%	15%	20%
							grade 3 events	12015	12428	11918	11714	12980	46861
								5%	5%	5%	5%	5%	9%
							grade 4 events	11937	12369	11716	11769	13089	46892
								5%	5%	5%	5%	5%	9%
							grade 5 events	1401	1505	1431	1436	1657	6332
								0%	0%	0%	0%	0%	1%
							grade 6 events	27392	28202	26637	25962	33402	144847
								13%	13%	12%	12%	14%	29%
							grade 7 events	16969	17900	17299	17720	18788	20975
								8%	8%	8%	8%	8%	4%

2.2 Compared Parameters

Parameter	Planned	Actual
Instrument	ACIS	ACIS
Detector	ACIS-012367	ACIS-012367
Grating	NONE	NONE
Data mode	FAINT	FAINT
Observation mode	SECONDARY	SECONDARY
[deg] Pointing RA	0	145.4141784386353
[deg] Pointing Dec	0	-60.12568496984112
[deg] Pointing Roll	0.0	211.0347310431642
[mm] SIM focus pos	-0.782348	-0.6828225247311905
[mm] SIM defocus	0	0.8505141146731063
[mm] SIM translation stage pos	-233.592463	250.466033080201
[mm] SIM translation stage offset	0	-0.01005468664627074
[s] Observation start time (MET)	79766217.39393499	79766216.625469
Observation start date	2000-07-12T05:16:57	2000-07-12T05:16:56
[s] Observation end time (MET)	79776727.744322	79776726.975857
Observation end date	2000-07-12T08:12:08	2000-07-12T08:12:06
Read mode	TIMED	TIMED

Parameter	Planned	Actual
Obspar format version number	7	7
Obspar file type	PREDICTED	ACTUAL
Obspar update status	NONE	UPDATED
On-chip summing requested	N	N
Subarray requested	NONE	NONE
Alternating exposures requested	N	N
[s] Primary exposure time	3.2	3.2

2.3 Star Slots

2.4 FID Slots

A Summary

A.1 Status

V&V Scientist	Jen Lauer
V&V Date (YYYY-MM-DD)	2012.09.04
V&V Edition	1
V&V Disposition and Status	OK
V&V Charge Time	5.5678966802657

A.2 Comments