

V&V Reference Report

L2 ASCDS Version : 8.4.5

Observation 61988 - L2 Version 5
Chandra X-Ray Center

L2 Processing Date : Aug 30 2012

Contents

1	Front	2
2	OBI	3
2.1	OBI	3
2.1.1	Images	3
2.1.2	Bias	3
2.1.3	Parameters	4
2.1.4	Events	4
2.2	Compared Parameters	5
2.3	Star Slots	6
2.4	FID Slots	6
A	Summary	7
A.1	Status	7
A.2	Comments	7

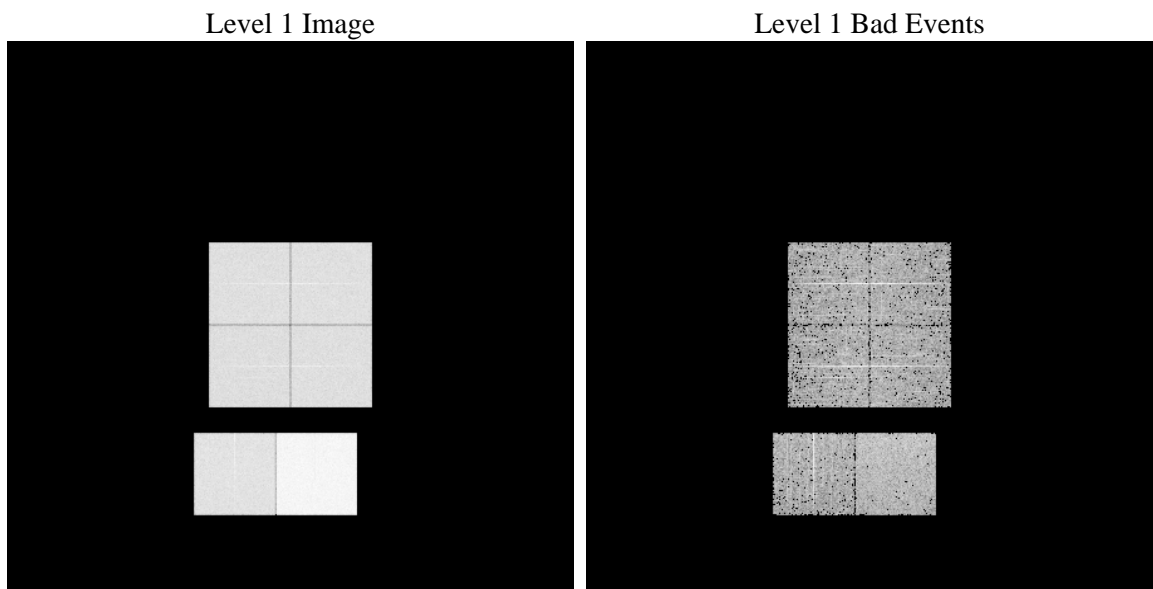
1 Front

seq_num	 	Sequence number
obs_id	61988	Observation id
title	ACIS-012367 diagnostics	Proposal title
observer	CHANDRA engineering request/realtime commanding	Principal investig
object	 	Source name
dtcycle	0	
cycle	P	events from which exps? Prim/Second/Both
ra_targ	0.0	Observer's specified target RA [deg]
dec_targ	0.0	Observer's specified target Dec [deg]
ra_nom	158.99067911916	Nominal RA [deg]
dec_nom	-54.376521434486	Nominal Dec [deg]
roll_nom	214.59748355105	Nominal Roll [deg]
revision	5	Processing version of data
ontime	5449.0057149529	Sum of GTIs [s]
livetime	5380.0071235929	Livetime [s]
ontime0	2450.1817826331	Sum of GTIs [s]
ontime1	2512.6582898647	Sum of GTIs [s]
ontime2	2320.5830185562	Sum of GTIs [s]
ontime3	2389.4991291612	Sum of GTIs [s]
ontime6	2612.276039511	Sum of GTIs [s]
ontime7	5449.0057149529	Sum of GTIs [s]
l2events	1376717	Number of level 2 events

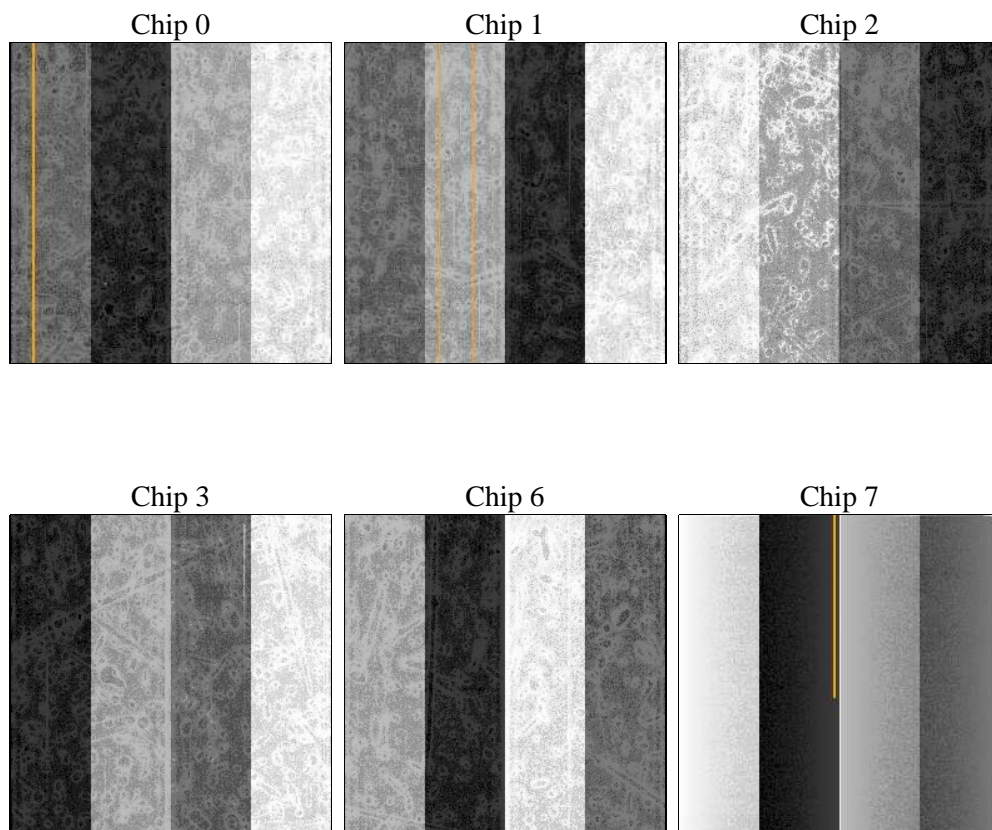
2 OBI

2.1 OBI

2.1.1 Images



2.1.2 Bias



2.1.3 Parameters

obi_num	0	Obi number	sched_exp_time	0.0	[s] Scheduled observation exposure time
ascdsver	8.4.5	Processing system revision	ontime	5449.0057149529	Sum of GTIs [s]
caldbver	4.5.1.1	 	ontime0	2450.1817826331	Sum of GTIs [s]
date	2012-08-30T21:37:00	Date and time of file creation	ontime1	2512.6582898647	Sum of GTIs [s]
revision	5	Processing version of data	ontime2	2320.5830185562	Sum of GTIs [s]
			ontime3	2389.4991291612	Sum of GTIs [s]
			ontime6	2612.276039511	Sum of GTIs [s]
			ontime7	5449.0057149529	Sum of GTIs [s]
			l1events	1553783	Number of level 1 events

2.1.4 Events

	ccd 0	ccd 1	ccd 2	ccd 3	ccd 6	ccd 7		ccd 0	ccd 1	ccd 2	ccd 3	ccd 6	ccd 7
level 1 events	213811	217800	205078	210901	237527	468666	grade 0 events	107596	110546	104111	108006	119342	113889
rejected events	18775	17945	18706	18412	19482	25474		50%	50%	50%	51%	50%	24%
rejected %	8%	8%	9%	8%	8%	5%	grade 1 events	592	528	524	548	583	328
								0%	0%	0%	0%	0%	0%
							grade 2 events	34437	35330	32495	33747	37222	99044
								16%	16%	15%	16%	15%	21%
							grade 3 events	12332	12483	11643	12108	13350	45284
								5%	5%	5%	5%	5%	9%
							grade 4 events	12301	12712	11717	12132	13582	45047
								5%	5%	5%	5%	5%	9%
							grade 5 events	1528	1468	1361	1409	1610	6001
								0%	0%	0%	0%	0%	1%
							grade 6 events	28370	29034	26406	26744	34549	140203
								13%	13%	12%	12%	14%	29%
							grade 7 events	16655	15699	16821	16207	17289	18870
								7%	7%	8%	7%	7%	4%

2.2 Compared Parameters

Parameter	Planned	Actual
Instrument	ACIS	ACIS
Detector	ACIS-012367	ACIS-012367
Grating	NONE	NONE
Data mode	FAINT	FAINT
Observation mode	SECONDARY	SECONDARY
[deg] Pointing RA	0	158.9906791191575
[deg] Pointing Dec	0	-54.37652143448637
[deg] Pointing Roll	0.0	214.5974835510451
[mm] SIM focus pos	-0.782348	-0.6828225247311905
[mm] SIM defocus	0	0.8505141146731063
[mm] SIM translation stage pos	-233.592463	250.466033080201
[mm] SIM translation stage offset	0	-0.01005468664627074
[s] Observation start time (MET)	80679637.977799	80679637.209327
Observation start date	2000-07-22T19:00:38	2000-07-22T19:00:37
[s] Observation end time (MET)	80690148.32819	80690147.559718
Observation end date	2000-07-22T21:55:48	2000-07-22T21:55:47
Read mode	TIMED	TIMED

Parameter	Planned	Actual
Obspar format version number	7	7
Obspar file type	PREDICTED	ACTUAL
Obspar update status	NONE	UPDATED
On-chip summing requested	N	N
Subarray requested	NONE	NONE
Alternating exposures requested	N	N
[s] Primary exposure time	3.2	3.2

2.3 Star Slots

2.4 FID Slots

A Summary

A.1 Status

V&V Scientist	Jen Lauer
V&V Date (YYYY-MM-DD)	2012.09.05
V&V Edition	1
V&V Disposition and Status	OK
V&V Charge Time	5.4490057149529

A.2 Comments