

V&V Reference Report

L2 ASCDS Version : 7.6.10

Observation 61973 - L2 Version 001
Chandra X-Ray Center

L2 Processing Date : Jun 2 2007

Contents

1	Front	2
2	OBI	3
2.1	OBI	3
2.1.1	Images	3
2.1.2	Bias	3
2.1.3	Parameters	4
2.1.4	Events	4
2.2	Compared Parameters	5
2.3	Star Slots	6
2.4	FID Slots	6
A	Summary	7
A.1	Status	7
A.2	Comments	7

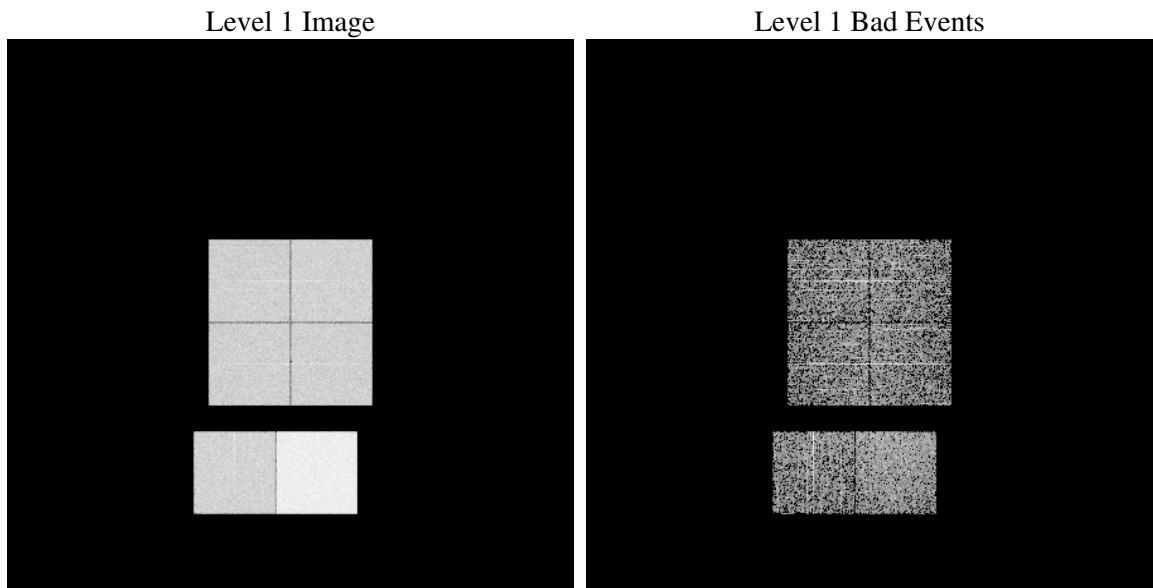
1 Front

seq_num	
obs_id	61973
title	ACIS-012367 diagnostics
observer	CHANDRA engineering request/realtime commanding
object	
dtcycle	0
cycle	P
ra_targ	0.0
dec_targ	0.0
ra_nom	314.03116889842
dec_nom	-27.991762241097
roll_nom	344.24790294204
revision	3
ontime	2547.1306019723
livetime	2514.8773005923
ontime0	1147.6041049212
ontime1	1198.8733057529
ontime2	1134.0526654422
ontime3	1134.0525358617
ontime6	1202.8247851729
ontime7	2547.1306019723
l2events	644416

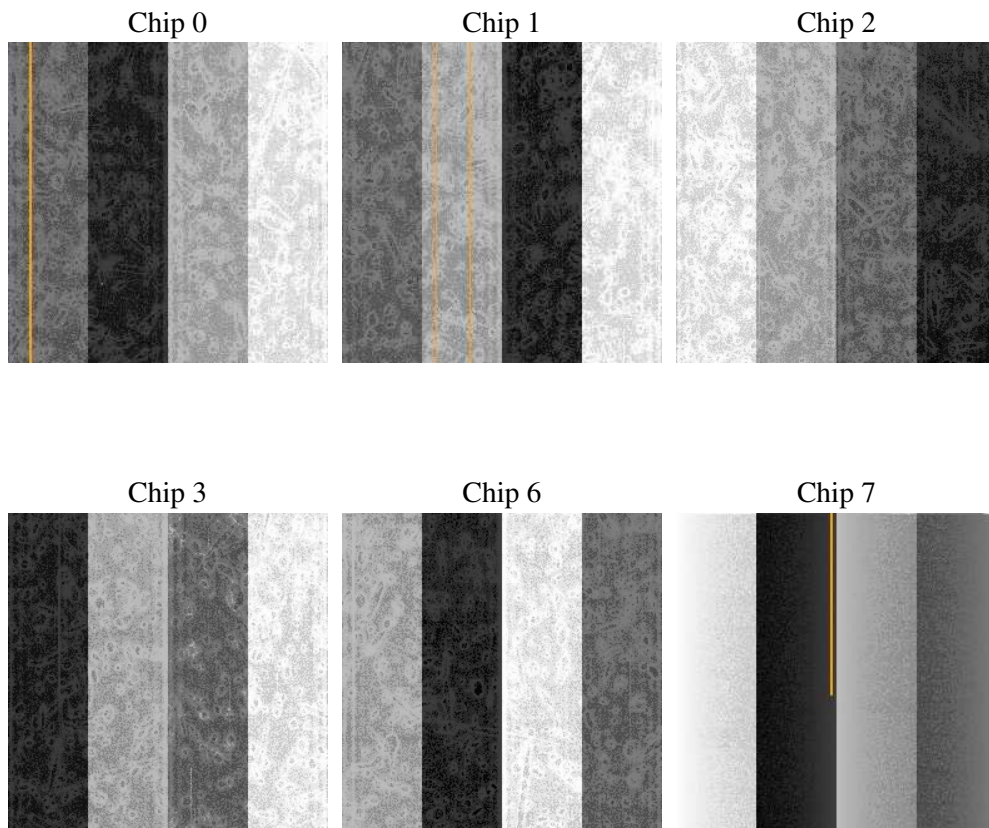
2 OBI

2.1 OBI

2.1.1 Images



2.1.2 Bias



2.1.3 Parameters

obi_num	0
ascdsver	7.6.10
caldsver	3.4.0
date	2007-06-02T13:31:53
revision	3

sched_exp_time	0.0
ontime	2547.1306019723
ontime0	1147.6041049212
ontime1	1198.8733057529
ontime2	1134.0526654422
ontime3	1134.0525358617
ontime6	1202.8247851729
ontime7	2547.1306019723
l1events	729962

2.1.4 Events

	ccd 0	ccd 1	ccd 2	ccd 3	ccd 6	ccd 7
level 1 events	99125	103888	99157	100177	109060	218555
rejected events	9210	9014	9034	9043	9825	12232
rejected %	9%	8%	9%	9%	9%	5%

	ccd 0	ccd 1	ccd 2	ccd 3	ccd 6	ccd 7
grade 0 events	50064	52769	50594	51306	54320	53545
	50%	50%	51%	51%	49%	24%
grade 1 events	262	230	235	315	286	153
	0%	0%	0%	0%	0%	0%
grade 2 events	15895	16553	15815	15975	17083	45796
	16%	15%	15%	15%	15%	20%
grade 3 events	5635	6105	5626	5732	6188	21349
	5%	5%	5%	5%	5%	9%
grade 4 events	5545	5934	5561	5817	6123	21183
	5%	5%	5%	5%	5%	9%
grade 5 events	661	705	690	713	713	2701
	0%	0%	0%	0%	0%	1%
grade 6 events	13038	13793	12809	12574	15775	64710
	13%	13%	12%	12%	14%	29%
grade 7 events	8025	7799	7827	7745	8572	9118
	8%	7%	7%	7%	7%	4%

2.2 Compared Parameters

Parameter	Planned	Actual	Parameter	Planned	Actual
Instrument	ACIS	ACIS	Obspar format version number	6	6
Detector	ACIS-012367	ACIS-012367	Obspar file type	PREDICTED	ACTUAL
Grating	NONE	NONE	Obspar update status	NONE	UPDATED
Data mode	FAINT	FAINT	On-chip summing requested	N	N
Observation mode	SECONDARY	SECONDARY	Subarray requested	NONE	NONE
Pointing RA	0	314.0311688984176	Alternating exposures requested	N	N
Pointing Dec	0	-27.99176224109699	Primary exposure time	0.000000	3.2
Pointing Roll	0.0	344.2479029420359			
SIM focus pos (mm)	-0.782348	-0.7809083437167272			
SIM defocus (mm)	0	0.7524282956875696			
SIM translation stage pos (mm)	-233.592463	250.466033080201			
SIM translation stage offset (mm)	0	-0.01005468664627074			
Observation start time	82007025.32700001	82007024.55869099			
Observation start date	2000-08-07T03:43:45	2000-08-07T03:43:44			
Observation end time	82051899.829	82051899.06036299			
Observation end date	2000-08-07T16:11:40	2000-08-07T16:11:39			
Read mode	TIMED	TIMED			

2.3 Star Slots

2.4 FID Slots

A Summary

A.1 Status

V&V Scientist	Doug Morgan
V&V Date (YYYY-MM-DD)	2007.06.03
V&V Edition	1
V&V Disposition and Status	OK
V&V Charge Time	2.5471306

A.2 Comments