

V&V Reference Report

L2 ASCDS Version : 8.4.5

Observation 61963 - L2 Version 4
Chandra X-Ray Center

L2 Processing Date : Aug 31 2012

Contents

1	Front	2
2	OBI	3
2.1	OBI	3
2.1.1	Images	3
2.1.2	Bias	3
2.1.3	Parameters	4
2.1.4	Events	4
2.2	Compared Parameters	5
2.3	Star Slots	6
2.4	FID Slots	6
A	Summary	7
A.1	Status	7
A.2	Comments	7

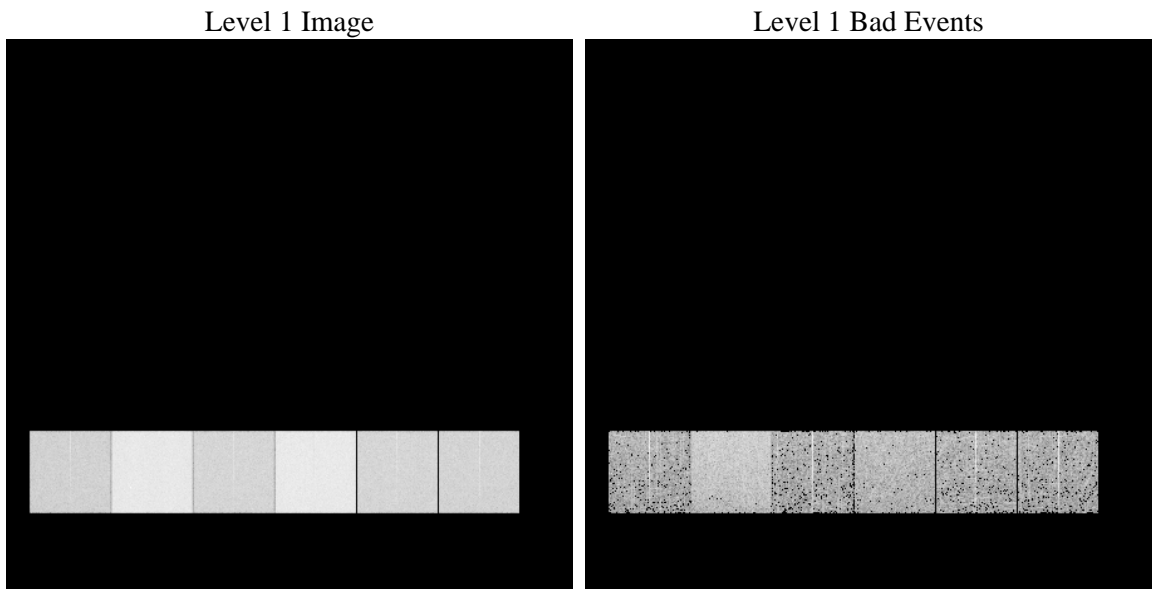
1 Front

seq_num	 	Sequence number
obs_id	61963	Observation id
title	ACIS-456789 diagnostics	Proposal title
observer	CHANDRA engineering request/realtime commanding	Principal investig
object	 	Source name
dtcycle	0	
cycle	P	events from which exps? Prim/Second/Both
ra_targ	0.0	Observer's specified target RA [deg]
dec_targ	0.0	Observer's specified target Dec [deg]
ra_nom	186.49195090125	Nominal RA [deg]
dec_nom	-38.298059466776	Nominal Dec [deg]
roll_nom	224.96413967053	Nominal Roll [deg]
revision	4	Processing version of data
ontime	4764.7047833353	Sum of GTIs [s]
livetime	4704.371222408	Livetime [s]
ontime4	2048.609932974	Sum of GTIs [s]
ontime5	5140.2597227246	Sum of GTIs [s]
ontime6	2246.0387197882	Sum of GTIs [s]
ontime7	4764.7047833353	Sum of GTIs [s]
ontime8	2229.8335796744	Sum of GTIs [s]
ontime9	2168.2540192455	Sum of GTIs [s]
l2events	1366661	Number of level 2 events

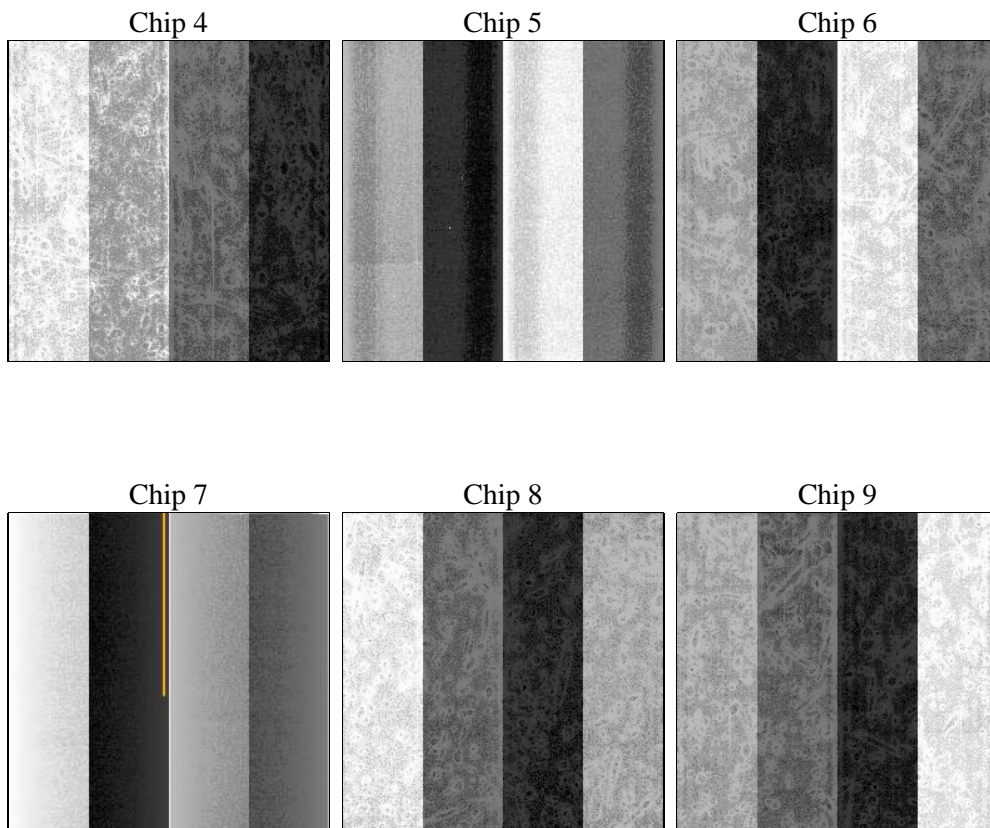
2 OBI

2.1 OBI

2.1.1 Images



2.1.2 Bias



2.1.3 Parameters

obi_num	0	Obi number	sched_exp_time	0.0	[s] Scheduled observation exposure time
ascdsver	8.4.5	Processing system revision	ontime	4764.7047833353	Sum of GTIs [s]
caldbver	4.5.1.1	 	ontime4	2048.609932974	Sum of GTIs [s]
date	2012-08-31T21:31:27	Date and time of file creation	ontime5	5140.2597227246	Sum of GTIs [s]
revision	4	Processing version of data	ontime6	2246.0387197882	Sum of GTIs [s]
			ontime7	4764.7047833353	Sum of GTIs [s]
			ontime8	2229.8335796744	Sum of GTIs [s]
			ontime9	2168.2540192455	Sum of GTIs [s]
			l1events	1554939	Number of level 1 events

2.1.4 Events

	ccd 4	ccd 5	ccd 6	ccd 7	ccd 8	ccd 9		ccd 4	ccd 5	ccd 6	ccd 7	ccd 8	ccd 9
level 1 events	173296	388371	201687	403778	200785	187022	grade 0 events	88721	81626	101542	98038	101008	93942
rejected events	17623	37640	17361	22924	18386	16627		51%	21%	50%	24%	50%	50%
rejected %	10%	9%	8%	5%	9%	8%	grade 1 events	480	255	469	263	493	455
								0%	0%	0%	0%	0%	0%
							grade 2 events	27517	130216	31585	84552	32234	29949
								15%	33%	15%	20%	16%	16%
							grade 3 events	9538	21661	11167	38861	11513	10570
								5%	5%	5%	9%	5%	5%
							grade 4 events	9408	21439	11188	38428	11378	10407
								5%	5%	5%	9%	5%	5%
							grade 5 events	1232	7714	1382	5150	1550	1353
								0%	1%	0%	1%	0%	0%
							grade 6 events	20727	95789	28844	121252	26266	25527
								11%	24%	14%	30%	13%	13%
							grade 7 events	15673	29671	15510	17234	16343	14819
								9%	7%	7%	4%	8%	7%

2.2 Compared Parameters

Parameter	Planned	Actual	Parameter	Planned	Actual
Instrument	ACIS	ACIS	Obspar format version number	7	7
Detector	ACIS-456789	ACIS-456789	Obspar file type	PREDICTED	ACTUAL
Grating	NONE	NONE	Obspar update status	NONE	UPDATED
Data mode	FAINT	FAINT	On-chip summing requested	N	N
Observation mode	SECONDARY	SECONDARY	Subarray requested	NONE	NONE
[deg] Pointing RA	0	186.4919509012465	Alternating exposures requested	N	N
[deg] Pointing Dec	0	-38.29805946677588	[s] Primary exposure time	0.000000	3.2
[deg] Pointing Roll	0.0	224.9641396705267			
[mm] SIM focus pos	-0.684267	-0.6828225247311905			
[mm] SIM defocus	0	0.8505141146731063			
[mm] SIM translation stage pos	-190.132523	250.466033080201			
[mm] SIM translation stage offset	0	-0.01005468664627074			
[s] Observation start time (MET)	82738014.354	82738013.58601201			
Observation start date	2000-08-15T14:46:54	2000-08-15T14:46:53			
[s] Observation end time (MET)	82748524.705	82748523.936405			
Observation end date	2000-08-15T17:42:05	2000-08-15T17:42:03			
Read mode	TIMED	TIMED			

2.3 Star Slots

2.4 FID Slots

A Summary

A.1 Status

V&V Scientist	Jen Lauer
V&V Date (YYYY-MM-DD)	2012.09.06
V&V Edition	1
V&V Disposition and Status	OK
V&V Charge Time	4.7647047833353

A.2 Comments