

V&V Reference Report

L2 ASCDS Version : 7.6.10

Observation 61957 - L2 Version 001
Chandra X-Ray Center

L2 Processing Date : Jun 5 2007

Contents

1	Front	2
2	OBI	3
2.1	OBI	3
2.1.1	Images	3
2.1.2	Bias	3
2.1.3	Parameters	4
2.1.4	Events	4
2.2	Compared Parameters	5
2.3	Star Slots	6
2.4	FID Slots	6
A	Summary	7
A.1	Status	7
A.2	Comments	7

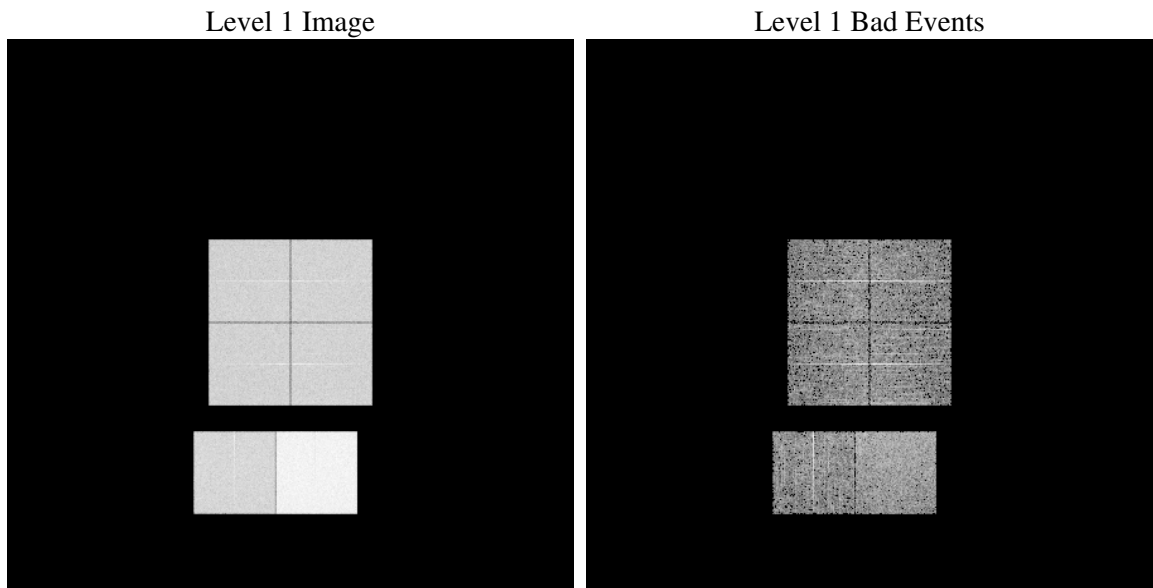
1 Front

seq_num	
obs_id	61957
title	ACIS-012367 diagnostics
observer	CHANDRA engineering request/realtime commanding
object	
dtcycle	0
cycle	P
ra_targ	0.0
dec_targ	0.0
ra_nom	314.03115385741
dec_nom	-28.008393963222
roll_nom	310.61585215766
revision	3
ontime	5249.0687784106
livetime	5182.6019089286
ontime0	2218.7743115723
ontime1	2286.8769721389
ontime2	2173.4817319661
ontime3	2221.9332615584
ontime6	2410.1183025241
ontime7	5249.0687784106
l2events	1262065

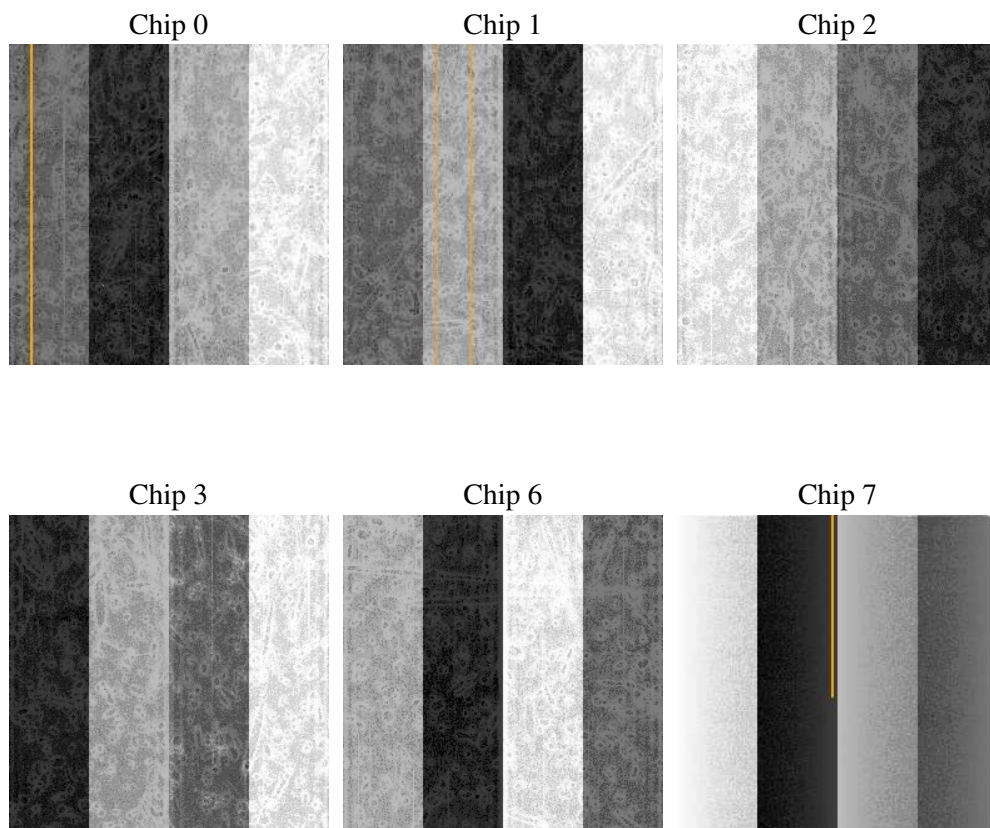
2 OBI

2.1 OBI

2.1.1 Images



2.1.2 Bias



2.1.3 Parameters

obi_num	0
ascdsver	7.6.10
caldsver	3.4.0
date	2007-06-05T13:41:24
revision	3

sched_exp_time	0.0
ontime	5249.0687784106
ontime0	2218.7743115723
ontime1	2286.8769721389
ontime2	2173.4817319661
ontime3	2221.9332615584
ontime6	2410.1183025241
ontime7	5249.0687784106
l1events	1431335

2.1.4 Events

	ccd 0	ccd 1	ccd 2	ccd 3	ccd 6	ccd 7
level 1 events	189991	194213	189051	194228	216911	446941
rejected events	17709	17071	17941	19027	19225	25845
rejected %	9%	8%	9%	9%	8%	5%

	ccd 0	ccd 1	ccd 2	ccd 3	ccd 6	ccd 7
grade 0 events	95108	97979	95486	98163	107873	109123
	50%	50%	50%	50%	49%	24%
grade 1 events	497	510	565	510	505	298
	0%	0%	0%	0%	0%	0%
grade 2 events	30178	31092	29890	30534	34441	93766
	15%	16%	15%	15%	15%	20%
grade 3 events	11007	11331	10596	11097	12159	43451
	5%	5%	5%	5%	5%	9%
grade 4 events	10828	11297	10988	11179	12203	42502
	5%	5%	5%	5%	5%	9%
grade 5 events	1389	1409	1304	1287	1522	5930
	0%	0%	0%	0%	0%	1%
grade 6 events	25161	25443	24150	24228	31010	132254
	13%	13%	12%	12%	14%	29%
grade 7 events	15823	15152	16072	17230	17198	19617
	8%	7%	8%	8%	7%	4%

2.2 Compared Parameters

Parameter	Planned	Actual	Parameter	Planned	Actual
Instrument	ACIS	ACIS	Obspar format version number	6	6
Detector	ACIS-012367	ACIS-012367	Obspar file type	PREDICTED	ACTUAL
Grating	NONE	NONE	Obspar update status	NONE	UPDATED
Data mode	FAINT	FAINT	On-chip summing requested	N	N
Observation mode	SECONDARY	SECONDARY	Subarray requested	NONE	NONE
Pointing RA	0	314.031153857412	Alternating exposures requested	N	N
Pointing Dec	0	-28.00839396322198	Primary exposure time	3.2	3.2
Pointing Roll	0.0	310.6158521576605			
SIM focus pos (mm)	-0.782348	-0.6828225247311905			
SIM defocus (mm)	0	0.8505141146731063			
SIM translation stage pos (mm)	-233.592463	250.466033080201			
SIM translation stage offset (mm)	0	-0.01005468664627074			
Observation start time	83377399.128433	83377398.35996801			
Observation start date	2000-08-23T00:23:19	2000-08-23T00:23:18			
Observation end time	83423909.530177	83423908.761709			
Observation end date	2000-08-23T13:18:30	2000-08-23T13:18:28			
Read mode	TIMED	TIMED			

2.3 Star Slots

2.4 FID Slots

A Summary

A.1 Status

V&V Scientist	Jen Lauer
V&V Date (YYYY-MM-DD)	2007.06.05
V&V Edition	1
V&V Disposition and Status	OK
V&V Charge Time	5.24906877

A.2 Comments