

V&V Reference Report

L2 ASCDS Version : 8.4.5

Observation 61954 - L2 Version 4
Chandra X-Ray Center

L2 Processing Date : Sep 1 2012

Contents

1	Front	2
2	OBI	3
2.1	OBI	3
2.1.1	Images	3
2.1.2	Bias	3
2.1.3	Parameters	4
2.1.4	Events	4
2.2	Compared Parameters	5
2.3	Star Slots	6
2.4	FID Slots	6
A	Summary	7
A.1	Status	7
A.2	Comments	7

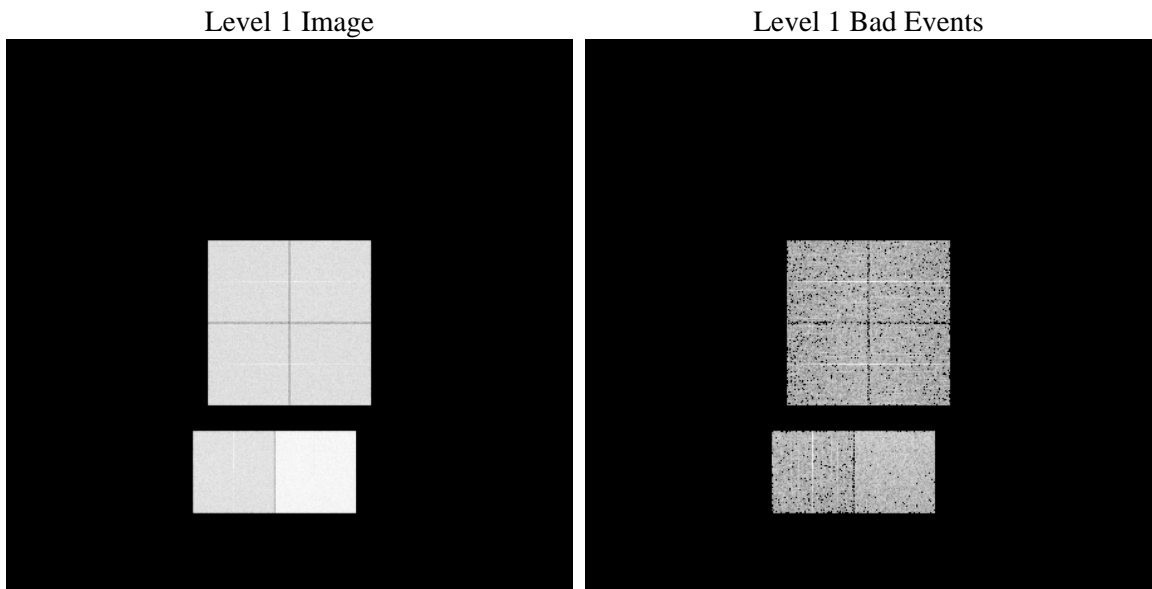
1 Front

seq_num	 	Sequence number
obs_id	61954	Observation id
title	ACIS-012367 diagnostics	Proposal title
observer	CHANDRA engineering request/realtime commanding	Principal investig
object	 	Source name
dtcycle	0	
cycle	P	events from which exps? Prim/Second/Both
ra_targ	0.0	Observer's specified target RA [deg]
dec_targ	0.0	Observer's specified target Dec [deg]
ra_nom	176.82887615457	Nominal RA [deg]
dec_nom	-44.384450701668	Nominal Dec [deg]
roll_nom	205.88454107443	Nominal Roll [deg]
revision	4	Processing version of data
ontime	5211.553071931	Sum of GTIs [s]
livetime	5145.5612489137	Livetime [s]
ontime0	2239.556759581	Sum of GTIs [s]
ontime1	2307.6184896976	Sum of GTIs [s]
ontime2	2237.8043183684	Sum of GTIs [s]
ontime3	2218.5222085118	Sum of GTIs [s]
ontime6	2419.2610891461	Sum of GTIs [s]
ontime7	5211.553071931	Sum of GTIs [s]
l2events	1263654	Number of level 2 events

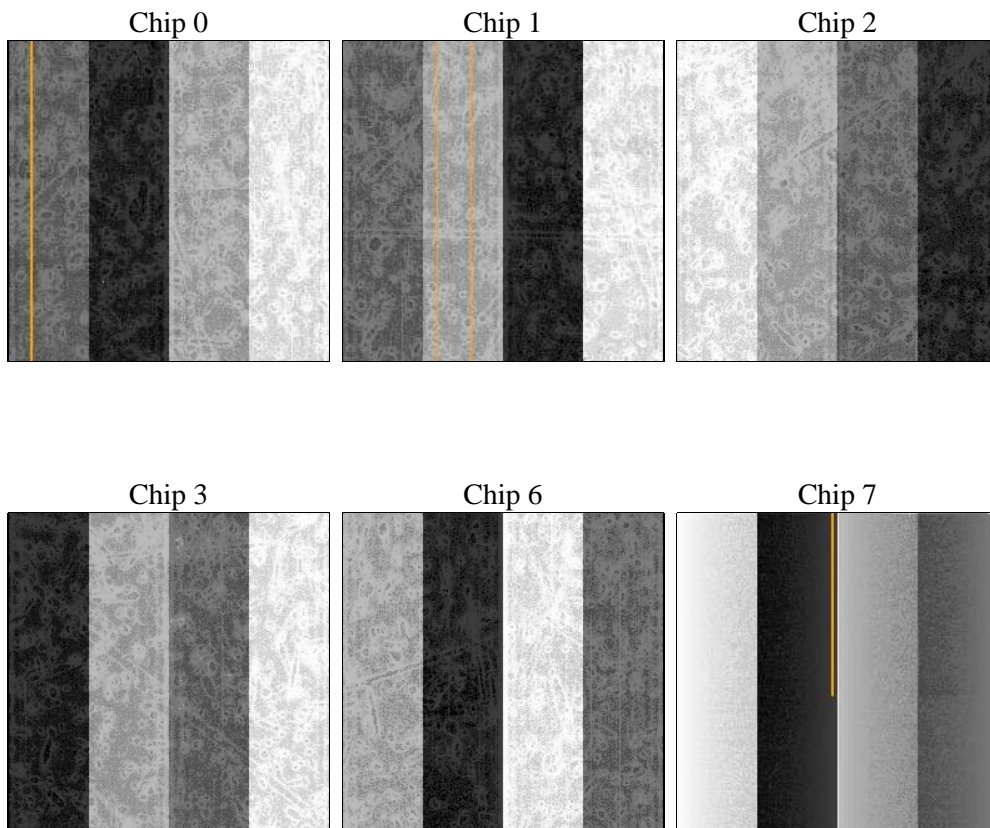
2 OBI

2.1 OBI

2.1.1 Images



2.1.2 Bias



2.1.3 Parameters

obi_num	0	Obi number	sched_exp_time	0.0	[s] Scheduled observation exposure time
ascdsver	8.4.5	Processing system revision	ontime	5211.553071931	Sum of GTIs [s]
caldsver	4.5.1.1	 	ontime0	2239.556759581	Sum of GTIs [s]
date	2012-09-01T04:50:21	Date and time of file creation	ontime1	2307.6184896976	Sum of GTIs [s]
revision	4	Processing version of data	ontime2	2237.8043183684	Sum of GTIs [s]
			ontime3	2218.5222085118	Sum of GTIs [s]
			ontime6	2419.2610891461	Sum of GTIs [s]
			ontime7	5211.553071931	Sum of GTIs [s]
			l1events	1431612	Number of level 1 events

2.1.4 Events

	ccd 0	ccd 1	ccd 2	ccd 3	ccd 6	ccd 7		ccd 0	ccd 1	ccd 2	ccd 3	ccd 6	ccd 7
level 1 events	190897	196278	193687	192019	216881	441850	grade 0 events	96206	99163	98552	98000	108202	107887
rejected events	17200	17218	17731	17700	19272	25869		50%	50%	50%	51%	49%	24%
rejected %	9%	8%	9%	9%	8%	5%	grade 1 events	501	476	528	540	530	295
								0%	0%	0%	0%	0%	0%
							grade 2 events	30464	31485	30780	30302	34148	92743
								15%	16%	15%	15%	15%	20%
							grade 3 events	10959	11322	11058	11033	12340	42747
								5%	5%	5%	5%	5%	9%
							grade 4 events	10854	11165	10976	10922	12461	42467
								5%	5%	5%	5%	5%	9%
							grade 5 events	1401	1406	1344	1388	1627	5894
								0%	0%	0%	0%	0%	1%
							grade 6 events	25214	25925	24822	24062	30714	130137
								13%	13%	12%	12%	14%	29%
							grade 7 events	15298	15336	15627	15772	16859	19680
								8%	7%	8%	8%	7%	4%

2.2 Compared Parameters

Parameter	Planned	Actual	Parameter	Planned	Actual
Instrument	ACIS	ACIS	Obspar format version number	7	7
Detector	ACIS-012367	ACIS-012367	Obspar file type	PREDICTED	ACTUAL
Grating	NONE	NONE	Obspar update status	NONE	UPDATED
Data mode	FAINT	FAINT	On-chip summing requested	N	N
Observation mode	SECONDARY	SECONDARY	Subarray requested	NONE	NONE
[deg] Pointing RA	0	176.8288761545694	Alternating exposures requested	N	N
[deg] Pointing Dec	0	-44.3844507016682	[s] Primary exposure time	3.2	3.2
[deg] Pointing Roll	0.0	205.8845410744296			
[mm] SIM focus pos	-0.782348	-0.6828225247311905			
[mm] SIM defocus	0	0.8505141146731063			
[mm] SIM translation stage pos	-233.592463	250.466033080201			
[mm] SIM translation stage offset	0	-0.01005468664627074			
[s] Observation start time (MET)	83604688.786955	83604688.018489			
Observation start date	2000-08-25T15:31:29	2000-08-25T15:31:28			
[s] Observation end time (MET)	83652158.588735	83652157.820271			
Observation end date	2000-08-26T04:42:39	2000-08-26T04:42:37			
Read mode	TIMED	TIMED			

2.3 Star Slots

2.4 FID Slots

A Summary

A.1 Status

V&V Scientist	Jen Lauer
V&V Date (YYYY-MM-DD)	2012.09.07
V&V Edition	1
V&V Disposition and Status	OK
V&V Charge Time	5.211553071931

A.2 Comments