

V&V Reference Report

L2 ASCDS Version : 7.6.10

Observation 61951 - L2 Version 001
Chandra X-Ray Center

L2 Processing Date : Jun 5 2007

Contents

1	Front	2
2	OBI	3
2.1	OBI	3
2.1.1	Images	3
2.1.2	Bias	3
2.1.3	Parameters	4
2.1.4	Events	4
2.2	Compared Parameters	5
2.3	Star Slots	6
2.4	FID Slots	6
A	Summary	7
A.1	Status	7
A.2	Comments	7

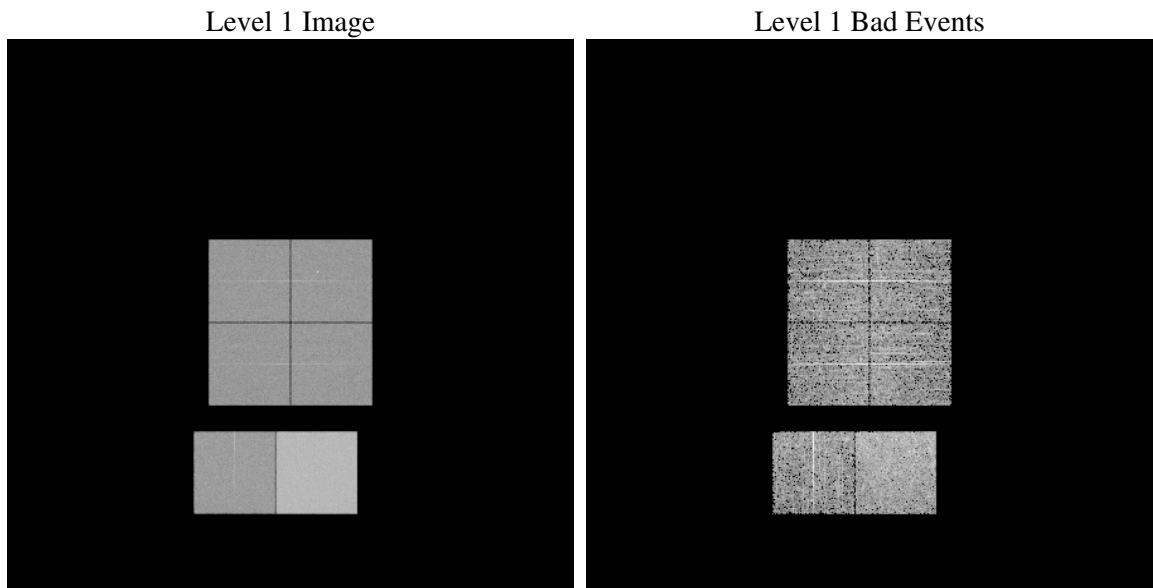
1 Front

seq_num	
obs_id	61951
title	ACIS-012367 diagnostics
observer	CHANDRA engineering request/realtime commanding
object	
dtcycle	0
cycle	P
ra_targ	0.0
dec_targ	0.0
ra_nom	176.82747243576
dec_nom	-44.383811998785
roll_nom	203.52702353759
revision	2
ontime	5259.0351794064
livetime	5192.442109354
ontime0	2274.1166626513
ontime1	2277.398642987
ontime2	2196.4139124751
ontime3	2231.9014117122
ontime6	2416.8454425782
ontime7	5259.0351794064
l2events	1262054

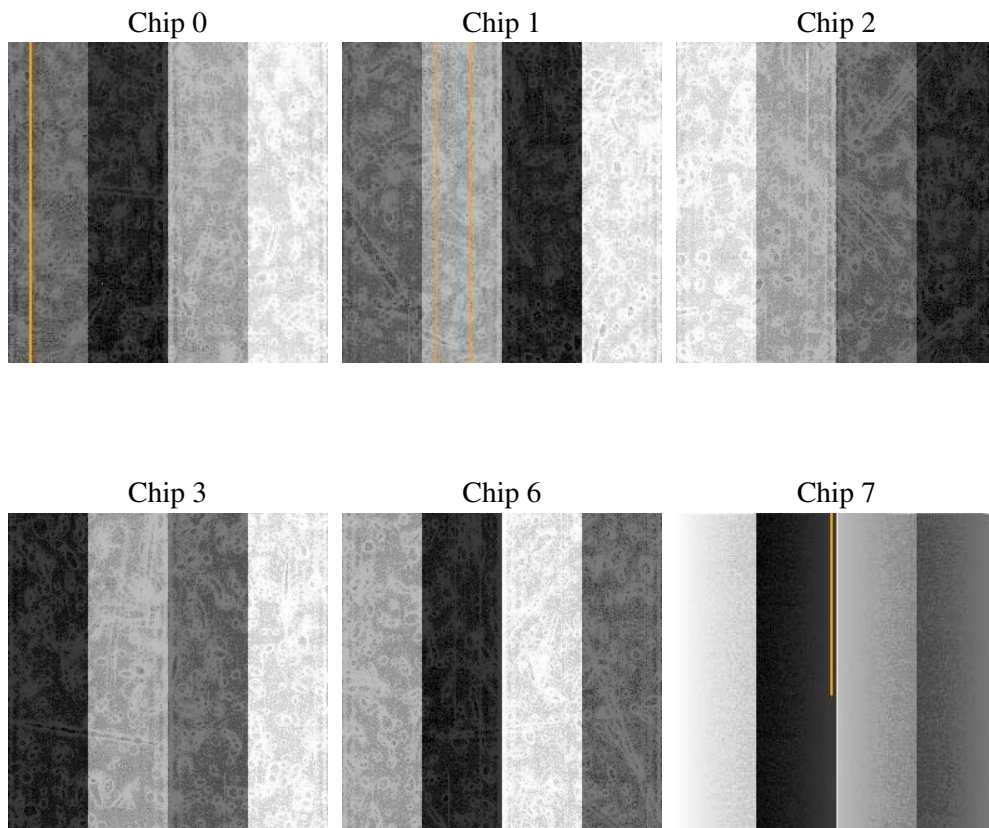
2 OBI

2.1 OBI

2.1.1 Images



2.1.2 Bias



2.1.3 Parameters

obi_num	0
ascdsver	7.6.10
caldsver	3.4.0
date	2007-06-05T14:22:59
revision	2

sched_exp_time	0.0
ontime	5259.0351794064
ontime0	2274.1166626513
ontime1	2277.398642987
ontime2	2196.4139124751
ontime3	2231.9014117122
ontime6	2416.8454425782
ontime7	5259.0351794064
l1events	1430754

2.1.4 Events

	ccd 0	ccd 1	ccd 2	ccd 3	ccd 6	ccd 7
level 1 events	193093	194182	189571	193668	215592	444648
rejected events	17595	17667	17569	18154	18769	25499
rejected %	9%	9%	9%	9%	8%	5%

	ccd 0	ccd 1	ccd 2	ccd 3	ccd 6	ccd 7
grade 0 events	96782	97663	95595	98352	107508	108431
	50%	50%	50%	50%	49%	24%
grade 1 events	536	500	487	563	523	287
	0%	0%	0%	0%	0%	0%
grade 2 events	30911	30907	30063	30679	33813	94161
	16%	15%	15%	15%	15%	21%
grade 3 events	11214	11145	10849	11124	12193	43160
	5%	5%	5%	5%	5%	9%
grade 4 events	11200	11308	10749	11144	12146	42670
	5%	5%	5%	5%	5%	9%
grade 5 events	1361	1416	1333	1377	1485	5864
	0%	0%	0%	0%	0%	1%
grade 6 events	25391	25492	24746	24215	31163	130727
	13%	13%	13%	12%	14%	29%
grade 7 events	15698	15751	15749	16214	16761	19348
	8%	8%	8%	8%	7%	4%

2.2 Compared Parameters

Parameter	Planned	Actual	Parameter	Planned	Actual
Instrument	ACIS	ACIS	Obspar format version number	6	6
Detector	ACIS-012367	ACIS-012367	Obspar file type	PREDICTED	ACTUAL
Grating	NONE	NONE	Obspar update status	NONE	UPDATED
Data mode	FAINT	FAINT	On-chip summing requested	N	N
Observation mode	SECONDARY	SECONDARY	Subarray requested	NONE	NONE
Pointing RA	0	176.8274724357578	Alternating exposures requested	N	N
Pointing Dec	0	-44.3838119987846	Primary exposure time	0.000000	3.2
Pointing Roll	0.0	203.527023537593			
SIM focus pos (mm)	-0.782348	-0.6828225247311905			
SIM defocus (mm)	0	0.8505141146731063			
SIM translation stage pos (mm)	-233.592463	250.466033080201			
SIM translation stage offset (mm)	0	-0.01005468664627074			
Observation start time	83833581.546	83833580.777079			
Observation start date	2000-08-28T07:06:22	2000-08-28T07:06:20			
Observation end time	83876436.79700001	83876436.028687			
Observation end date	2000-08-28T19:00:37	2000-08-28T19:00:36			
Read mode	TIMED	TIMED			

2.3 Star Slots

2.4 FID Slots

A Summary

A.1 Status

V&V Scientist	Jen Lauer
V&V Date (YYYY-MM-DD)	2007.06.05
V&V Edition	1
V&V Disposition and Status	OK
V&V Charge Time	5.25903517

A.2 Comments