

V&V Reference Report

L2 ASCDS Version : 7.6.10

Observation 61945 - L2 Version 001
Chandra X-Ray Center

L2 Processing Date : Jun 6 2007

Contents

| | | |
|----------|-------------------------------|----------|
| 1 | Front | 2 |
| 2 | OBI | 3 |
| 2.1 | OBI | 3 |
| 2.1.1 | Images | 3 |
| 2.1.2 | Bias | 3 |
| 2.1.3 | Parameters | 4 |
| 2.1.4 | Events | 4 |
| 2.2 | Compared Parameters | 5 |
| 2.3 | Star Slots | 6 |
| 2.4 | FID Slots | 6 |
| A | Summary | 7 |
| A.1 | Status | 7 |
| A.2 | Comments | 7 |

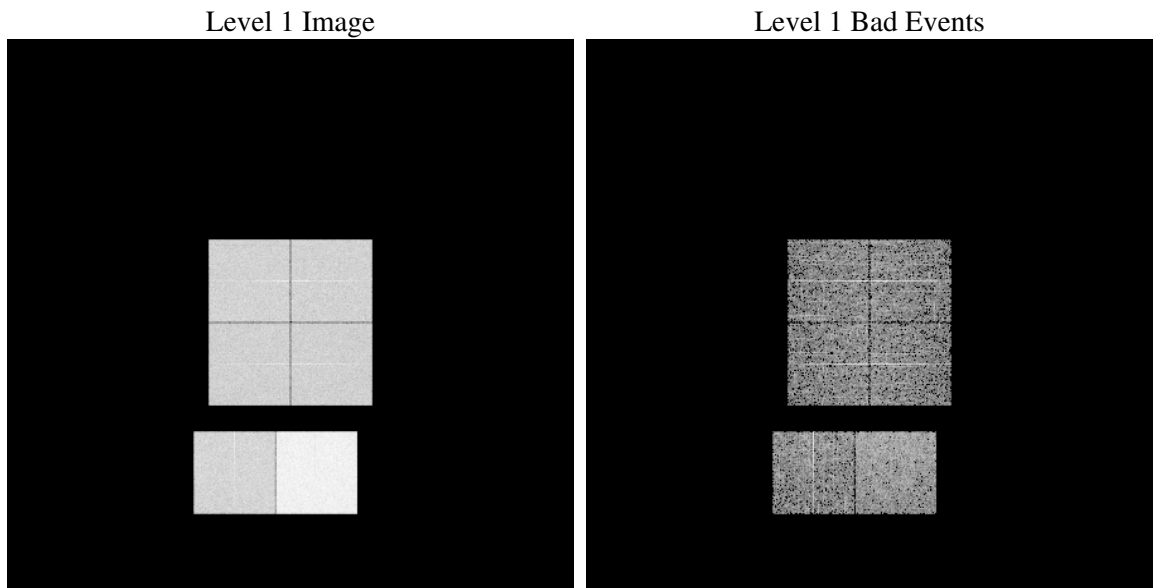
1 Front

| | |
|----------|-------------------------------------------------|
| seq_num | |
| obs_id | 61945 |
| title | ACIS-012367 diagnostics |
| observer | CHANDRA engineering request/realtime commanding |
| object | |
| dtcycle | 0 |
| cycle | P |
| ra_targ | 0.0 |
| dec_targ | 0.0 |
| ra_nom | 247.4524978523 |
| dec_nom | -31.376324261379 |
| roll_nom | 261.17536327336 |
| revision | 2 |
| ontime | 3968.06135571 |
| livetime | 3917.8153735443 |
| ontime0 | 1777.1848036051 |
| ontime1 | 1744.815483585 |
| ontime2 | 1667.0716534704 |
| ontime3 | 1647.461233601 |
| ontime6 | 1809.7182936668 |
| ontime7 | 3968.06135571 |
| l2events | 988991 |

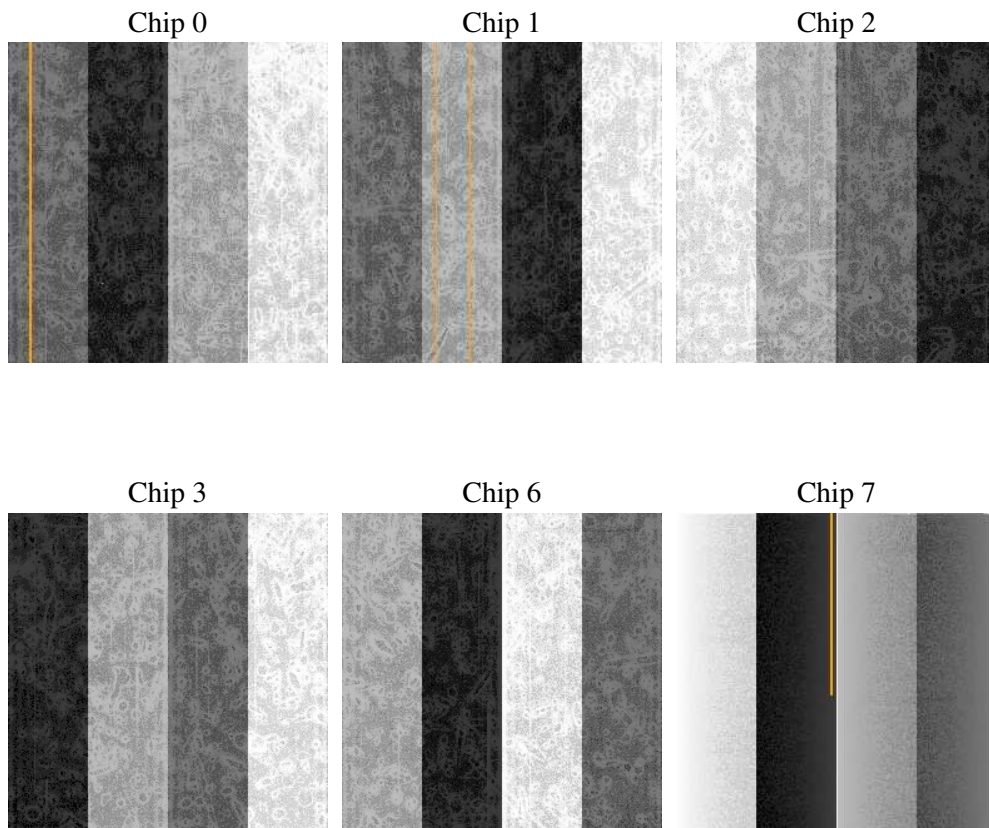
2 OBI

2.1 OBI

2.1.1 Images



2.1.2 Bias



2.1.3 Parameters

| | |
|----------|---------------------|
| obi_num | 0 |
| ascdsver | 7.6.10 |
| caldsver | 3.4.0 |
| date | 2007-06-07T03:00:32 |
| revision | 2 |

| | |
|----------------|-----------------|
| sched_exp_time | 0.0 |
| ontime | 3968.06135571 |
| ontime0 | 1777.1848036051 |
| ontime1 | 1744.815483585 |
| ontime2 | 1667.0716534704 |
| ontime3 | 1647.461233601 |
| ontime6 | 1809.7182936668 |
| ontime7 | 3968.06135571 |
| l1events | 1126366 |

2.1.4 Events

| | ccd 0 | ccd 1 | ccd 2 | ccd 3 | ccd 6 | ccd 7 |
|-----------------|--------|--------|--------|--------|--------|--------|
| level 1 events | 156916 | 154629 | 149302 | 148041 | 168649 | 348829 |
| rejected events | 14687 | 14900 | 14684 | 14401 | 15981 | 21099 |
| rejected % | 9% | 9% | 9% | 9% | 9% | 6% |

| | ccd 0 | ccd 1 | ccd 2 | ccd 3 | ccd 6 | ccd 7 |
|----------------|-------|-------|-------|-------|-------|--------|
| grade 0 events | 78518 | 76723 | 74230 | 74293 | 82836 | 84795 |
| | 50% | 49% | 49% | 50% | 49% | 24% |
| grade 1 events | 462 | 407 | 450 | 470 | 478 | 221 |
| | 0% | 0% | 0% | 0% | 0% | 0% |
| grade 2 events | 24813 | 24808 | 23816 | 23602 | 26398 | 72100 |
| | 15% | 16% | 15% | 15% | 15% | 20% |
| grade 3 events | 9057 | 8909 | 8455 | 8375 | 9424 | 33029 |
| | 5% | 5% | 5% | 5% | 5% | 9% |
| grade 4 events | 9037 | 8777 | 8447 | 8411 | 9371 | 32947 |
| | 5% | 5% | 5% | 5% | 5% | 9% |
| grade 5 events | 1088 | 1114 | 1035 | 1174 | 1248 | 4603 |
| | 0% | 0% | 0% | 0% | 0% | 1% |
| grade 6 events | 21056 | 20785 | 19952 | 19239 | 24942 | 105137 |
| | 13% | 13% | 13% | 12% | 14% | 30% |
| grade 7 events | 12885 | 13106 | 12917 | 12477 | 13952 | 15997 |
| | 8% | 8% | 8% | 8% | 8% | 4% |

2.2 Compared Parameters

| Parameter | Planned | Actual | Parameter | Planned | Actual |
|-----------------------------------|---------------------|----------------------|---------------------------------|-----------|---------|
| Instrument | ACIS | ACIS | Obspar format version number | 6 | 6 |
| Detector | ACIS-012367 | ACIS-012367 | Obspar file type | PREDICTED | ACTUAL |
| Grating | NONE | NONE | Obspar update status | NONE | UPDATED |
| Data mode | FAINT | FAINT | On-chip summing requested | N | N |
| Observation mode | SECONDARY | SECONDARY | Subarray requested | NONE | NONE |
| Pointing RA | 0 | 247.4524978522983 | Alternating exposures requested | N | N |
| Pointing Dec | 0 | -31.37632426137872 | Primary exposure time | 3.2 | 3.2 |
| Pointing Roll | 0.0 | 261.1753632733584 | | | |
| SIM focus pos (mm) | -0.782348 | -0.7809083437167272 | | | |
| SIM defocus (mm) | 0 | 0.7524282956875696 | | | |
| SIM translation stage pos (mm) | -233.592463 | 250.466033080201 | | | |
| SIM translation stage offset (mm) | 0 | -0.01005468664627074 | | | |
| Observation start time | 84291885.71273699 | 84291884.944288 | | | |
| Observation start date | 2000-09-02T14:24:46 | 2000-09-02T14:24:44 | | | |
| Observation end time | 84314247.11357699 | 84314246.345128 | | | |
| Observation end date | 2000-09-02T20:37:27 | 2000-09-02T20:37:26 | | | |
| Read mode | TIMED | TIMED | | | |

2.3 Star Slots

2.4 FID Slots

A Summary

A.1 Status

| | |
|----------------------------|------------|
| V&V Scientist | Jen Lauer |
| V&V Date (YYYY-MM-DD) | 2007.06.07 |
| V&V Edition | 1 |
| V&V Disposition and Status | OK |
| V&V Charge Time | 3.96806135 |

A.2 Comments