

V&V Reference Report

L2 ASCDS Version : 7.6.10

Observation 61943 - L2 Version 001
Chandra X-Ray Center

L2 Processing Date : Jun 7 2007

Contents

1	Front	2
2	OBI	3
2.1	OBI	3
2.1.1	Images	3
2.1.2	Bias	3
2.1.3	Parameters	4
2.1.4	Events	4
2.2	Compared Parameters	5
2.3	Star Slots	6
2.4	FID Slots	6
A	Summary	7
A.1	Status	7
A.2	Comments	7

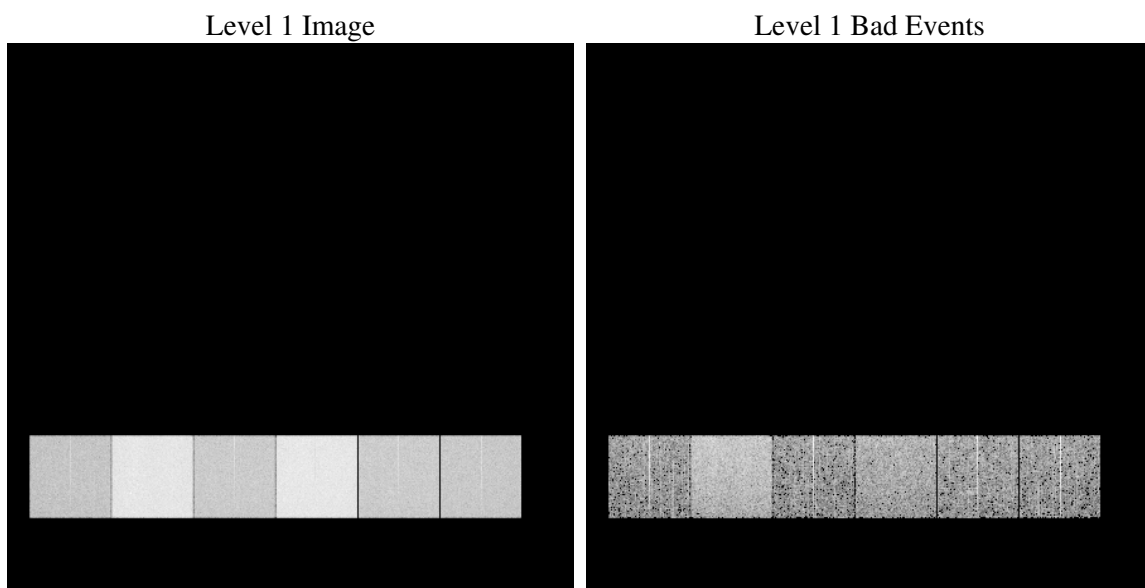
1 Front

seq_num	
obs_id	61943
title	ACIS-456789 diagnostics
observer	CHANDRA engineering request/realtime commanding
object	
dtcycle	0
cycle	P
ra_targ	0.0
dec_targ	0.0
ra_nom	187.7441948907
dec_nom	-37.362264813467
roll_nom	213.37456084818
revision	2
ontime	4900.2682526112
livetime	4838.2181054093
ontime4	2006.1654442698
ontime5	5263.2973364294
ontime6	2226.5149841011
ontime7	4900.2682526112
ontime8	2242.7979489714
ontime9	2129.1606643498
l2events	1361762

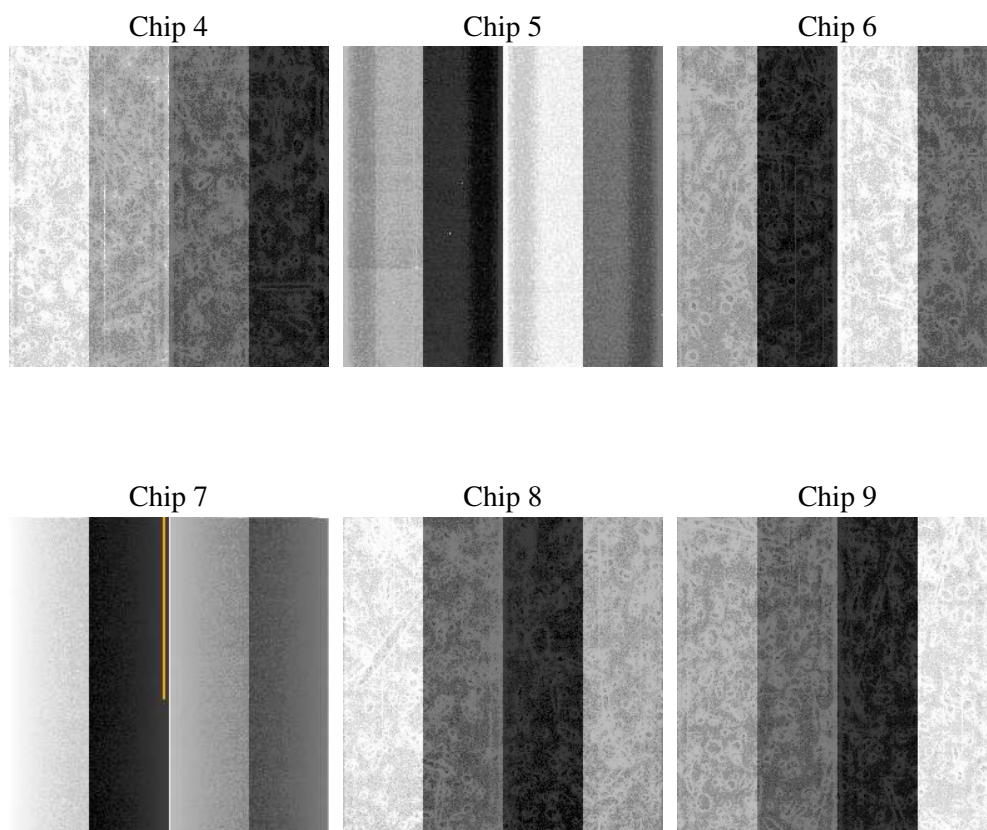
2 OBI

2.1 OBI

2.1.1 Images



2.1.2 Bias



2.1.3 Parameters

obi_num	0
ascdsver	7.6.10
caldsver	3.4.0
date	2007-06-07T03:05:58
revision	2

sched_exp_time	0.0
ontime	4900.2682526112
ontime4	2006.1654442698
ontime5	5263.2973364294
ontime6	2226.5149841011
ontime7	4900.2682526112
ontime8	2242.7979489714
ontime9	2129.1606643498
l1events	1555945

2.1.4 Events

	ccd 4	ccd 5	ccd 6	ccd 7	ccd 8	ccd 9
level 1 events	166123	396792	197695	412291	200269	182775
rejected events	18241	39961	18113	24146	19803	18274
rejected %	10%	10%	9%	5%	9%	9%

	ccd 4	ccd 5	ccd 6	ccd 7	ccd 8	ccd 9
grade 0 events	83117	82151	97986	99598	100003	90168
	50%	20%	49%	24%	49%	49%
grade 1 events	446	254	478	244	489	433
	0%	0%	0%	0%	0%	0%
grade 2 events	26977	133330	31151	85050	31822	29111
	16%	33%	15%	20%	15%	15%
grade 3 events	8755	21646	10714	39531	11160	10089
	5%	5%	5%	9%	5%	5%
grade 4 events	8733	21423	10859	39155	11216	10212
	5%	5%	5%	9%	5%	5%
grade 5 events	1284	7942	1480	5386	1623	1401
	0%	2%	0%	1%	0%	0%
grade 6 events	20300	98281	28872	124811	26265	24921
	12%	24%	14%	30%	13%	13%
grade 7 events	16511	31765	16155	18516	17691	16440
	9%	8%	8%	4%	8%	8%

2.2 Compared Parameters

Parameter	Planned	Actual	Parameter	Planned	Actual
Instrument	ACIS	ACIS	Obspar format version number	6	6
Detector	ACIS-456789	ACIS-456789	Obspar file type	PREDICTED	ACTUAL
Grating	NONE	NONE	Obspar update status	NONE	UPDATED
Data mode	FAINT	FAINT	On-chip summing requested	N	N
Observation mode	SECONDARY	SECONDARY	Subarray requested	NONE	NONE
Pointing RA	0	187.7441948907027	Alternating exposures requested	N	N
Pointing Dec	0	-37.36226481346673	Primary exposure time	0.000000	3.2
Pointing Roll	0.0	213.3745608481751			
SIM focus pos (mm)	-0.684267	-0.7809083437167272			
SIM defocus (mm)	0	0.7524282956875696			
SIM translation stage pos (mm)	-190.132523	250.466033080201			
SIM translation stage offset (mm)	0	-0.01005468664627074			
Observation start time	84336944.714	84336943.94598199			
Observation start date	2000-09-03T02:55:45	2000-09-03T02:55:43			
Observation end time	84347455.065	84347454.296376			
Observation end date	2000-09-03T05:50:55	2000-09-03T05:50:54			
Read mode	TIMED	TIMED			

2.3 Star Slots

2.4 FID Slots

A Summary

A.1 Status

V&V Scientist	Jen Lauer
V&V Date (YYYY-MM-DD)	2007.06.07
V&V Edition	1
V&V Disposition and Status	OK
V&V Charge Time	4.90026825

A.2 Comments

Focal plane temperature is warmer than -118.7 C degrees during the entire observation. This temperature is the upper limit of the verified ACIS calibration for the front-illuminated chips. The focal plane temperature is warmer than -116.7 degrees C for approximately the first 2.5 ksec of this observation. This temperature is the upper limit of the verified ACIS calibration for the back-illuminated chips. The ACIS spectral response calibration is less accurate at these warmer temperatures than it is at -119.7 C. Users whose science objectives depend on the most accurate spectral response (ie: fitting line-rich spectra) may notice an effect. Users whose science objectives do not depend on the most accurate spectral response should not notice an effect.