

# V&V Reference Report

## L2 ASCDS Version : 8.4.5

Observation 61940 - L2 Version 3  
Chandra X-Ray Center

L2 Processing Date : Sep 1 2012

## Contents

<b>1</b>	<b>Front</b>	<b>2</b>
<b>2</b>	<b>OBI</b>	<b>3</b>
2.1	OBI . . . . .	3
2.1.1	Images . . . . .	3
2.1.2	Bias . . . . .	3
2.1.3	Parameters . . . . .	4
2.1.4	Events . . . . .	4
2.2	Compared Parameters . . . . .	5
2.3	Star Slots . . . . .	6
2.4	FID Slots . . . . .	6
<b>A</b>	<b>Summary</b>	<b>7</b>
A.1	Status . . . . .	7
A.2	Comments . . . . .	7

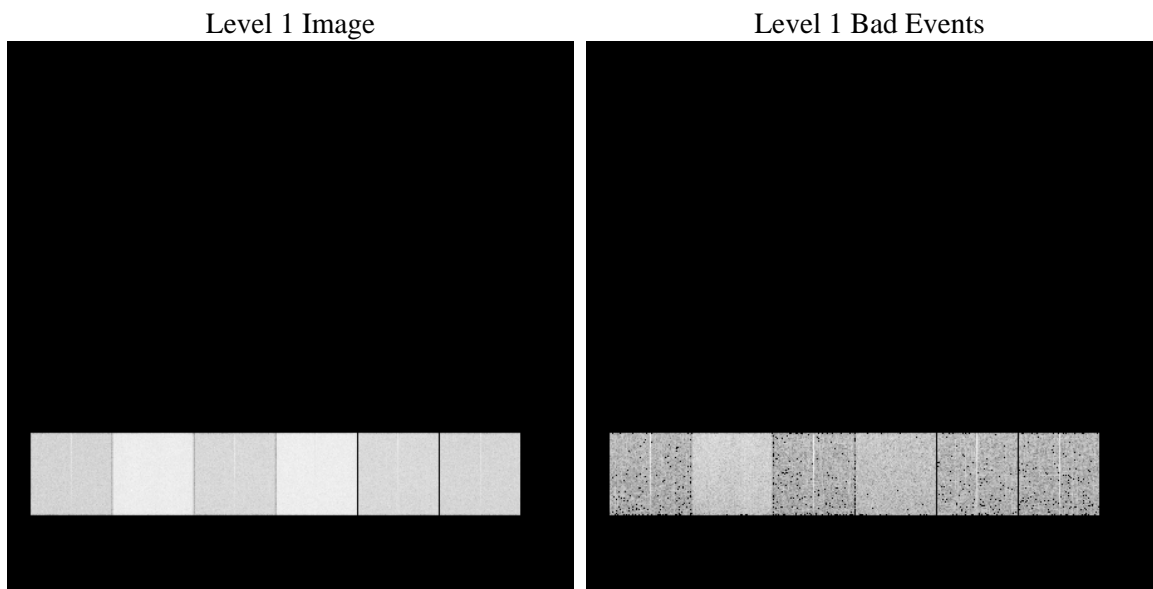
# 1 Front

seq_num	&#160	Sequence number
obs_id	61940	Observation id
title	ACIS-456789 diagnostics	Proposal title
observer	CHANDRA engineering request/realtime commanding	Principal investig
object	&#160	Source name
dtcycle	0	&#160
cycle	P	events from which exps? Prim/Second/Both
ra_targ	0.0	Observer's specified target RA [deg]
dec_targ	0.0	Observer's specified target Dec [deg]
ra_nom	22.399864365834	Nominal RA [deg]
dec_nom	26.690105291667	Nominal Dec [deg]
roll_nom	126.86492361929	Nominal Roll [deg]
revision	3	Processing version of data
ontime	4851.8135694861	Sum of GTIs [s]
livetime	4790.3769846579	Livetime [s]
ontime4	2041.8534998298	Sum of GTIs [s]
ontime5	5255.1705326885	Sum of GTIs [s]
ontime6	2200.6643298268	Sum of GTIs [s]
ontime7	4851.8135694861	Sum of GTIs [s]
ontime8	2252.5210594386	Sum of GTIs [s]
ontime9	2092.0281055123	Sum of GTIs [s]
l2events	1338317	Number of level 2 events

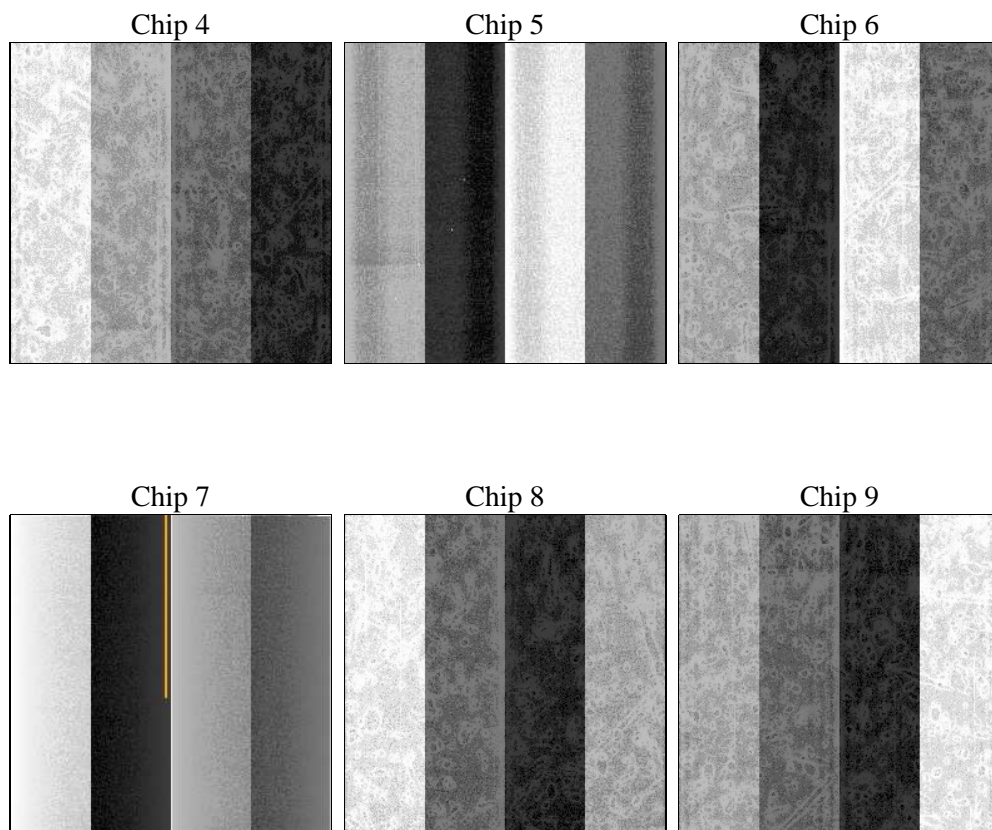
## 2 OBI

### 2.1 OBI

#### 2.1.1 Images



#### 2.1.2 Bias



### 2.1.3 Parameters

obi_num	0	Obi number	sched_exp_time	0.0	[s] Scheduled observation exposure time
ascdsver	8.4.5	Processing system revision	ontime	4851.8135694861	Sum of GTIs [s]
caldbver	4.5.1.1	&#160	ontime4	2041.8534998298	Sum of GTIs [s]
date	2012-09-01T17:07:43	Date and time of file creation	ontime5	5255.1705326885	Sum of GTIs [s]
revision	3	Processing version of data	ontime6	2200.6643298268	Sum of GTIs [s]
			ontime7	4851.8135694861	Sum of GTIs [s]
			ontime8	2252.5210594386	Sum of GTIs [s]
			ontime9	2092.0281055123	Sum of GTIs [s]
			l1events	1554641	Number of level 1 events

### 2.1.4 Events

	ccd 4	ccd 5	ccd 6	ccd 7	ccd 8	ccd 9		ccd 4	ccd 5	ccd 6	ccd 7	ccd 8	ccd 9
level 1 events	168419	398997	195391	411749	200950	179135	grade 0 events	81566	75070	96050	97560	100487	87991
rejected events	20351	47647	20242	30465	22044	19695		48%	18%	49%	23%	50%	49%
rejected %	12%	11%	10%	7%	10%	10%	grade 1 events	415	215	391	245	487	459
								0%	0%	0%	0%	0%	0%
							grade 2 events	29815	140991	31469	85714	32104	28994
								17%	35%	16%	20%	15%	16%
							grade 3 events	8529	19878	10721	39337	11048	9661
								5%	4%	5%	9%	5%	5%
							grade 4 events	8636	19386	10676	38377	11201	9744
								5%	4%	5%	9%	5%	5%
							grade 5 events	1389	8335	1474	5835	1520	1400
								0%	2%	0%	1%	0%	0%
							grade 6 events	20980	100635	28283	125173	26347	24786
								12%	25%	14%	30%	13%	13%
							grade 7 events	17089	34487	16327	19508	17756	16100
								10%	8%	8%	4%	8%	8%

## 2.2 Compared Parameters

Parameter	Planned	Actual
Instrument	ACIS	ACIS
Detector	ACIS-456789	ACIS-456789
Grating	NONE	NONE
Data mode	FAINT	FAINT
Observation mode	SECONDARY	SECONDARY
[deg] Pointing RA	0	22.39986436583442
[deg] Pointing Dec	0	26.69010529166702
[deg] Pointing Roll	0.0	126.8649236192885
[mm] SIM focus pos	-0.684267	-0.7809083437167272
[mm] SIM defocus	0	0.7524282956875696
[mm] SIM translation stage pos	-190.132523	250.466033080201
[mm] SIM translation stage offset	0	-0.01005468664627074
[s] Observation start time (MET)	84562778.873	84562778.104462
Observation start date	2000-09-05T17:39:39	2000-09-05T17:39:38
[s] Observation end time (MET)	84573289.223	84573288.45485599
Observation end date	2000-09-05T20:34:49	2000-09-05T20:34:48
Read mode	TIMED	TIMED

Parameter	Planned	Actual
Obspar format version number	7	7
Obspar file type	PREDICTED	ACTUAL
Obspar update status	NONE	UPDATED
On-chip summing requested	N	N
Subarray requested	NONE	NONE
Alternating exposures requested	N	N
[s] Primary exposure time	0.000000	3.2

## **2.3 Star Slots**

## **2.4 FID Slots**

## A Summary

### A.1 Status

V&V Scientist	Beth Sundheim
V&V Date (YYYY-MM-DD)	2012.09.09
V&V Edition	1
V&V Disposition and Status	OK
V&V Charge Time	4.8518135694861

### A.2 Comments