

# V&V Reference Report

## L2 ASCDS Version : 7.6.10

Observation 61913 - L2 Version 001  
Chandra X-Ray Center

L2 Processing Date : Jun 8 2007

## Contents

<b>1</b>	<b>Front</b>	<b>2</b>
<b>2</b>	<b>OBI</b>	<b>3</b>
2.1	OBI . . . . .	3
2.1.1	Images . . . . .	3
2.1.2	Bias . . . . .	3
2.1.3	Parameters . . . . .	4
2.1.4	Events . . . . .	4
2.2	Compared Parameters . . . . .	5
2.3	Star Slots . . . . .	6
2.4	FID Slots . . . . .	6
<b>A</b>	<b>Summary</b>	<b>7</b>
A.1	Status . . . . .	7
A.2	Comments . . . . .	7

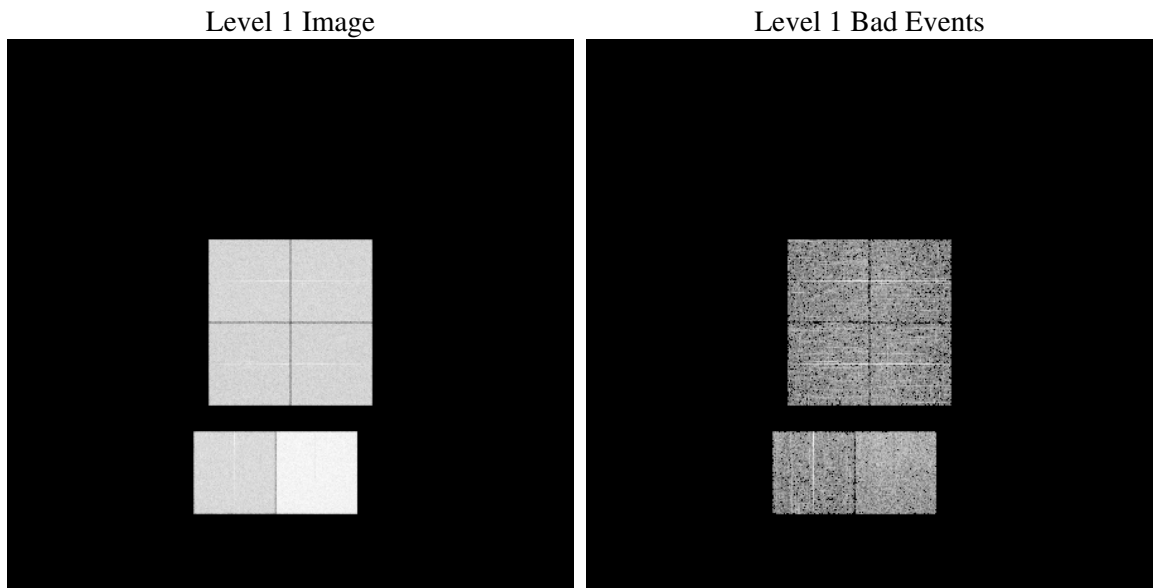
# 1 Front

seq_num	&#160
obs_id	61913
title	ACIS-012367 diagnostics
observer	CHANDRA engineering request/realtime commanding
object	&#160
dtcycle	0
cycle	P
ra_targ	0.0
dec_targ	0.0
ra_nom	15.778321403117
dec_nom	24.371907652548
roll_nom	143.73511167731
revision	2
ontime	5223.1194564551
livetime	5156.9811729125
ontime0	2367.8395330608
ontime1	2380.844812721
ontime2	2209.1107931584
ontime3	2234.8751623034
ontime6	2458.7116232216
ontime7	5223.1194564551
l2events	1264115

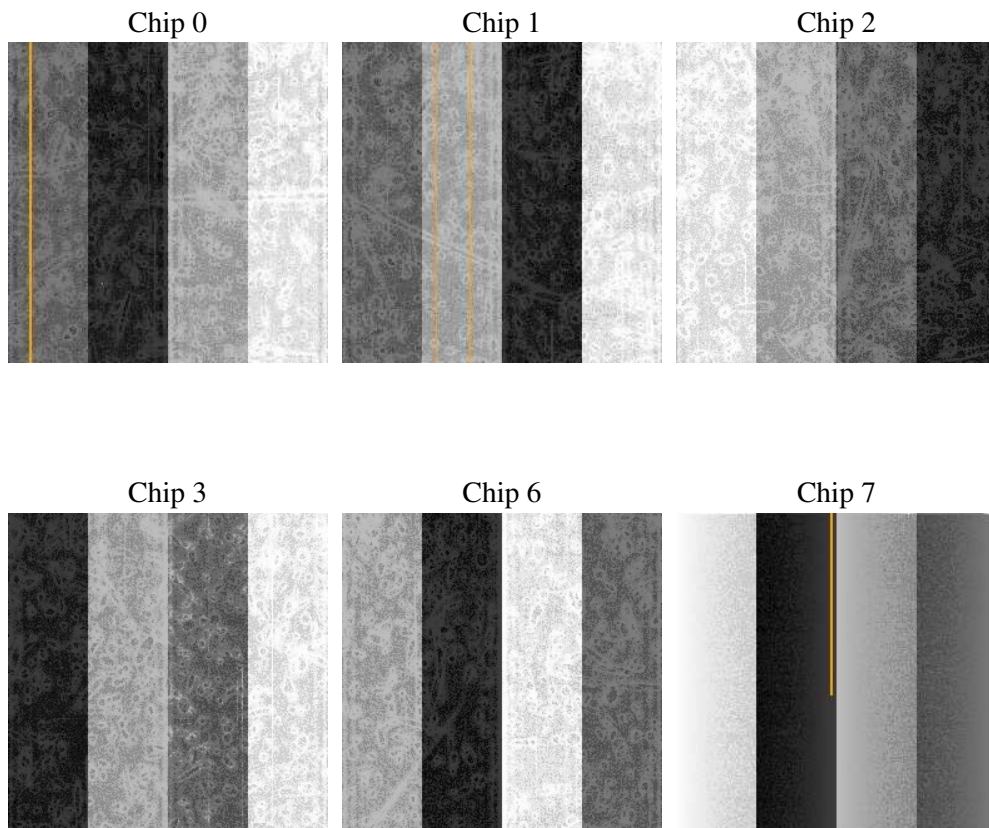
## 2 OBI

### 2.1 OBI

#### 2.1.1 Images



#### 2.1.2 Bias



### 2.1.3 Parameters

obi_num	0
ascdsver	7.6.10
caldbver	3.4.0
date	2007-06-08T15:21:18
revision	2

sched_exp_time	0.0
ontime	5223.1194564551
ontime0	2367.8395330608
ontime1	2380.844812721
ontime2	2209.1107931584
ontime3	2234.8751623034
ontime6	2458.7116232216
ontime7	5223.1194564551
l1events	1431135

### 2.1.4 Events

	ccd 0	ccd 1	ccd 2	ccd 3	ccd 6	ccd 7
level 1 events	197911	199857	189397	190973	216273	436724
rejected events	17133	17105	18060	18271	18337	25046
rejected %	8%	8%	9%	9%	8%	5%

	ccd 0	ccd 1	ccd 2	ccd 3	ccd 6	ccd 7
grade 0 events	99700	100881	95342	96687	108370	107096
	50%	50%	50%	50%	50%	24%
grade 1 events	528	506	472	498	478	274
	0%	0%	0%	0%	0%	0%
grade 2 events	31976	32202	30286	30458	34118	91130
	16%	16%	15%	15%	15%	20%
grade 3 events	11478	11571	10788	11064	12066	42084
	5%	5%	5%	5%	5%	9%
grade 4 events	11398	11562	10729	10778	12079	42225
	5%	5%	5%	5%	5%	9%
grade 5 events	1324	1347	1249	1341	1571	5677
	0%	0%	0%	0%	0%	1%
grade 6 events	26226	26536	24192	23715	31303	129143
	13%	13%	12%	12%	14%	29%
grade 7 events	15281	15252	16339	16432	16288	19095
	7%	7%	8%	8%	7%	4%

## 2.2 Compared Parameters

Parameter	Planned	Actual	Parameter	Planned	Actual
Instrument	ACIS	ACIS	Obspar format version number	6	6
Detector	ACIS-012367	ACIS-012367	Obspar file type	PREDICTED	ACTUAL
Grating	NONE	NONE	Obspar update status	NONE	UPDATED
Data mode	FAINT	FAINT	On-chip summing requested	N	N
Observation mode	SECONDARY	SECONDARY	Subarray requested	NONE	NONE
Pointing RA	0	15.77832140311662	Alternating exposures requested	N	N
Pointing Dec	0	24.37190765254844	Primary exposure time	0.000000	3.2
Pointing Roll	0.0	143.735111677306			
SIM focus pos (mm)	-0.782348	-0.6828225247311905			
SIM defocus (mm)	0	0.8505141146731063			
SIM translation stage pos (mm)	-233.592463	250.466033080201			
SIM translation stage offset (mm)	0	-0.01005468664627074			
Observation start time	85890420.42299999	85890419.65436			
Observation start date	2000-09-21T02:27:00	2000-09-21T02:26:59			
Observation end time	85934772.17399999	85934771.406029			
Observation end date	2000-09-21T14:46:12	2000-09-21T14:46:11			
Read mode	TIMED	TIMED			

## **2.3 Star Slots**

## **2.4 FID Slots**

## A Summary

### A.1 Status

V&V Scientist	Jen Lauer
V&V Date (YYYY-MM-DD)	2007.06.08
V&V Edition	1
V&V Disposition and Status	OK
V&V Charge Time	5.22311945

### A.2 Comments