

V&V Reference Report

L2 ASCDS Version : 7.6.10

Observation 61877 - L2 Version 001
Chandra X-Ray Center

L2 Processing Date : Jun 12 2007

Contents

1	Front	2
2	OBI	3
2.1	OBI	3
2.1.1	Images	3
2.1.2	Bias	3
2.1.3	Parameters	4
2.1.4	Events	4
2.2	Compared Parameters	5
2.3	Star Slots	6
2.4	FID Slots	6
A	Summary	7
A.1	Status	7
A.2	Comments	7

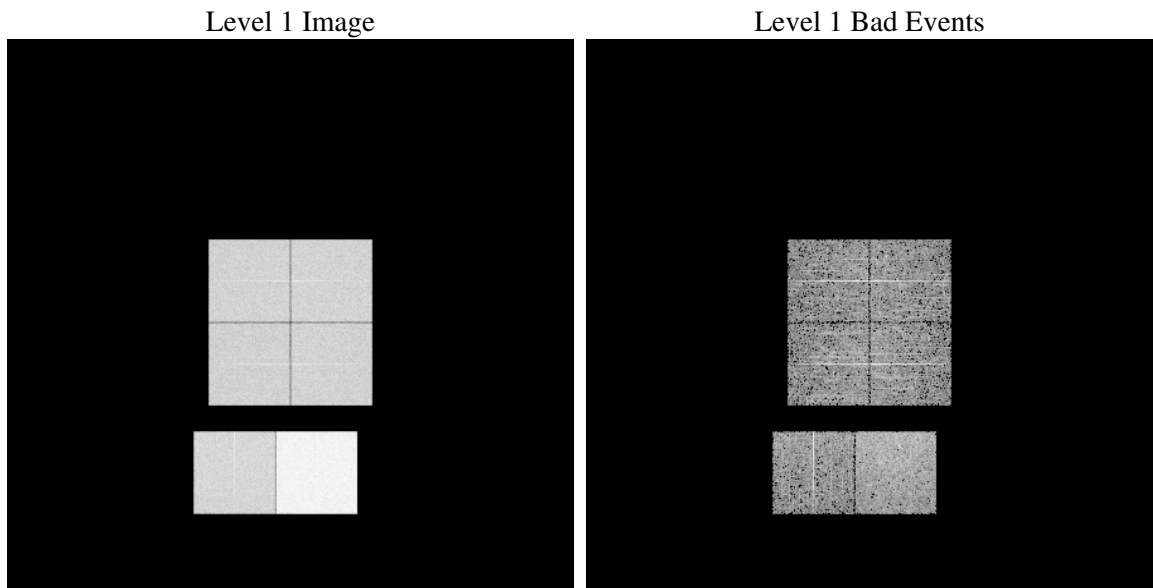
1 Front

seq_num	
obs_id	61877
title	ACIS-012367 diagnostics
observer	CHANDRA engineering request/realtime commanding
object	
dtcycle	0
cycle	P
ra_targ	0.0
dec_targ	0.0
ra_nom	162.71082395389
dec_nom	52.2079447531
roll_nom	44.134759327703
revision	2
ontime	5508.7344385535
livetime	5438.9795261308
ontime0	2329.3593827486
ontime1	2368.2927230895
ontime2	2199.7999328375
ontime3	2251.4923329502
ontime6	2475.3290830851
ontime7	5508.7344385535
l2events	1253005

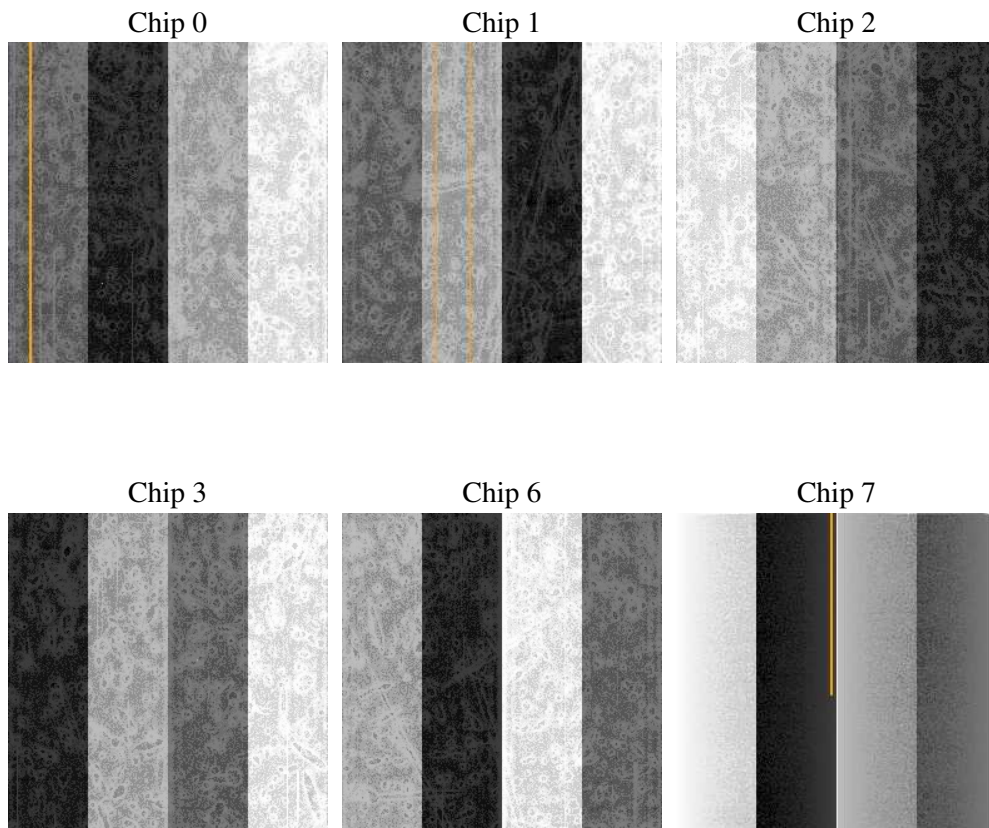
2 OBI

2.1 OBI

2.1.1 Images



2.1.2 Bias



2.1.3 Parameters

obi_num	0
ascdsver	7.6.10
caldbver	3.4.0
date	2007-06-12T20:01:53
revision	2

sched_exp_time	0.0
ontime	5508.7344385535
ontime0	2329.3593827486
ontime1	2368.2927230895
ontime2	2199.7999328375
ontime3	2251.4923329502
ontime6	2475.3290830851
ontime7	5508.7344385535
l1events	1428305

2.1.4 Events

	ccd 0	ccd 1	ccd 2	ccd 3	ccd 6	ccd 7
level 1 events	191865	195227	185785	190078	213656	451694
rejected events	17928	18457	19079	19107	19715	28367
rejected %	9%	9%	10%	10%	9%	6%

	ccd 0	ccd 1	ccd 2	ccd 3	ccd 6	ccd 7
grade 0 events	95921	97610	92928	95595	106095	108657
	49%	49%	50%	50%	49%	24%
grade 1 events	501	485	500	518	550	314
	0%	0%	0%	0%	0%	0%
grade 2 events	30600	30941	29129	29920	33508	93697
	15%	15%	15%	15%	15%	20%
grade 3 events	11053	11305	10524	10878	11898	43565
	5%	5%	5%	5%	5%	9%
grade 4 events	10995	11202	10584	10873	11981	42729
	5%	5%	5%	5%	5%	9%
grade 5 events	1411	1423	1314	1451	1678	6359
	0%	0%	0%	0%	0%	1%
grade 6 events	25368	25712	23541	23705	30459	134679
	13%	13%	12%	12%	14%	29%
grade 7 events	16016	16549	17265	17138	17487	21694
	8%	8%	9%	9%	8%	4%

2.2 Compared Parameters

Parameter	Planned	Actual	Parameter	Planned	Actual
Instrument	ACIS	ACIS	Obspar format version number	6	6
Detector	ACIS-012367	ACIS-012367	Obspar file type	PREDICTED	ACTUAL
Grating	NONE	NONE	Obspar update status	NONE	UPDATED
Data mode	FAINT	FAINT	On-chip summing requested	N	N
Observation mode	SECONDARY	SECONDARY	Subarray requested	NONE	NONE
Pointing RA	0	162.7108239538886	Alternating exposures requested	N	N
Pointing Dec	0	52.20794475310046	Primary exposure time	0.000000	3.2
Pointing Roll	0.0	44.13475932770302			
SIM focus pos (mm)	-0.782348	-0.7809083437167272			
SIM defocus (mm)	0	0.7524282956875696			
SIM translation stage pos (mm)	-233.592463	250.466033080201			
SIM translation stage offset (mm)	0	-0.01005468664627074			
Observation start time	88402424.918	88402424.149133			
Observation start date	2000-10-20T04:13:45	2000-10-20T04:13:44			
Observation end time	88445934.119	88445933.350784			
Observation end date	2000-10-20T16:18:54	2000-10-20T16:18:53			
Read mode	TIMED	TIMED			

2.3 Star Slots

2.4 FID Slots

A Summary

A.1 Status

V&V Scientist	Jen Lauer
V&V Date (YYYY-MM-DD)	2007.06.13
V&V Edition	1
V&V Disposition and Status	OK
V&V Charge Time	5.50873443

A.2 Comments