

V&V Reference Report

L2 ASCDS Version : 7.6.10

Observation 61871 - L2 Version 001
Chandra X-Ray Center

L2 Processing Date : Jun 14 2007

Contents

1	Front	2
2	OBI	3
2.1	OBI	3
2.1.1	Images	3
2.1.2	Bias	3
2.1.3	Parameters	4
2.1.4	Events	4
2.2	Compared Parameters	5
2.3	Star Slots	6
2.4	FID Slots	6
A	Summary	7
A.1	Status	7
A.2	Comments	7

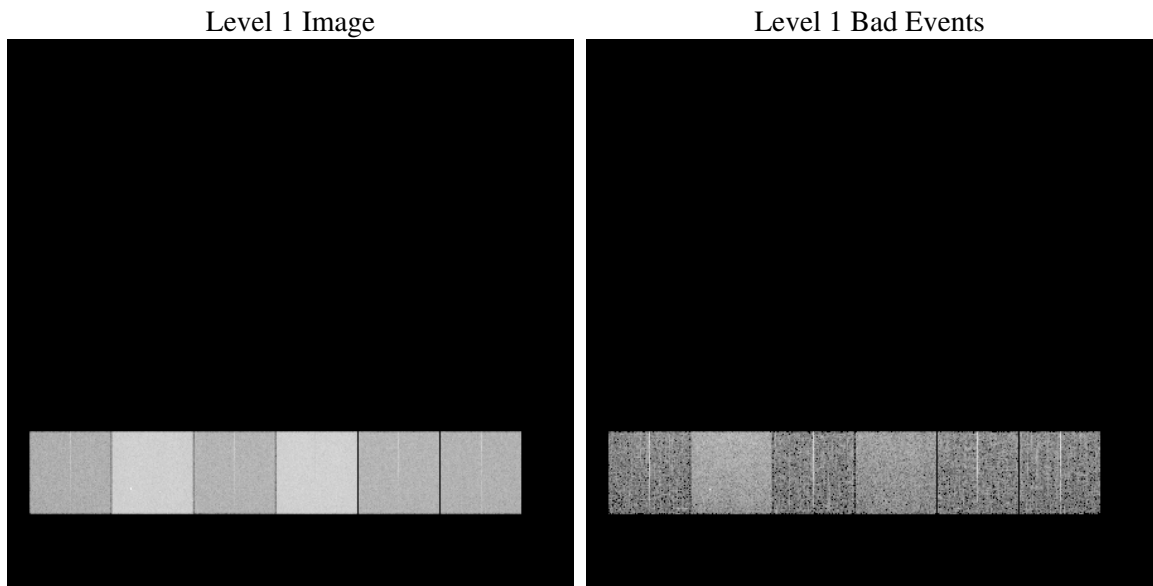
1 Front

seq_num	
obs_id	61871
title	ACIS-456789 diagnostics
observer	CHANDRA engineering request/realtime commanding
object	
dtcycle	0
cycle	P
ra_targ	0.0
dec_targ	0.0
ra_nom	173.01501850359
dec_nom	52.02716438758
roll_nom	38.864490165956
revision	2
ontime	4957.2813205421
livetime	4894.5092395449
ontime4	1991.3816947043
ontime5	5333.2327672094
ontime6	2172.8387446254
ontime7	4957.2813205421
ontime8	2198.8492044061
ontime9	2124.1000845879
l2events	1339677

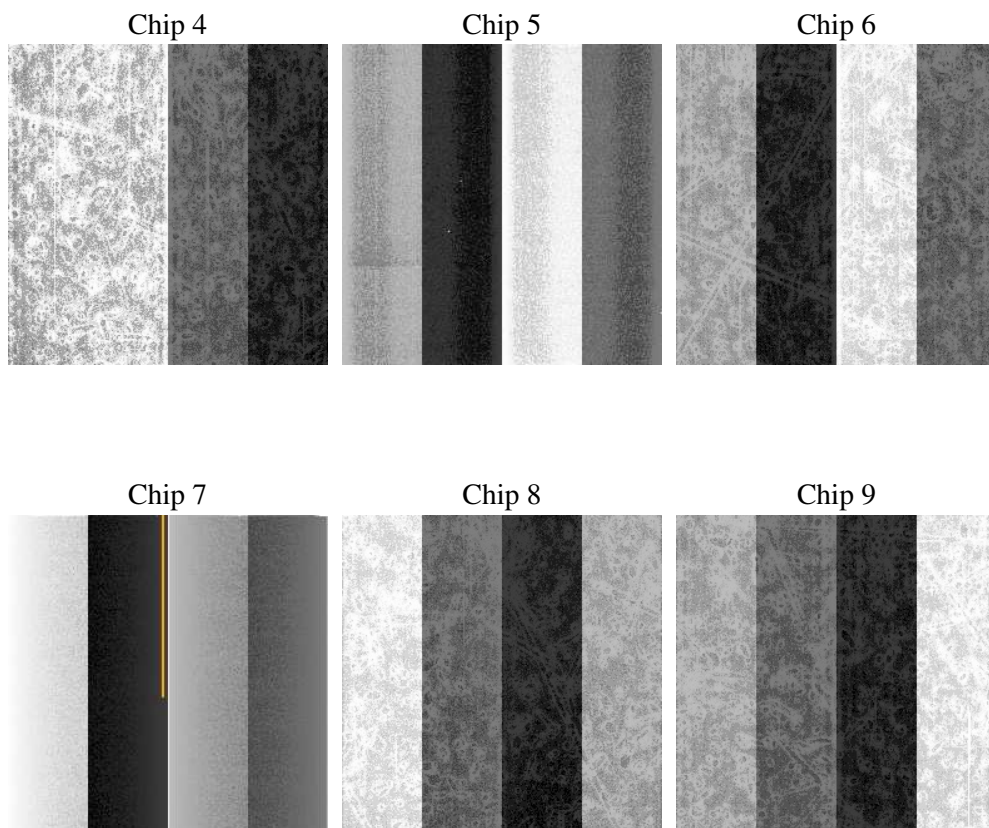
2 OBI

2.1 OBI

2.1.1 Images



2.1.2 Bias



2.1.3 Parameters

obi_num	0
ascdsver	7.6.10
caldbver	3.4.0
date	2007-06-14T16:07:57
revision	2

sched_exp_time	0.0
ontime	4957.2813205421
ontime4	1991.3816947043
ontime5	5333.2327672094
ontime6	2172.8387446254
ontime7	4957.2813205421
ontime8	2198.8492044061
ontime9	2124.1000845879
l1events	1553570

2.1.4 Events

	ccd 4	ccd 5	ccd 6	ccd 7	ccd 8	ccd 9
level 1 events	166212	401396	192424	416039	195113	182386
rejected events	20473	44241	20540	30257	21911	20906
rejected %	12%	11%	10%	7%	11%	11%

	ccd 4	ccd 5	ccd 6	ccd 7	ccd 8	ccd 9
grade 0 events	82574	87141	95009	100711	95828	89184
	49%	21%	49%	24%	49%	48%
grade 1 events	512	273	535	294	502	446
	0%	0%	0%	0%	0%	0%
grade 2 events	26086	129125	29776	85342	30793	28791
	15%	32%	15%	20%	15%	15%
grade 3 events	9064	23504	10501	39771	11061	10254
	5%	5%	5%	9%	5%	5%
grade 4 events	9145	22916	10665	39152	11041	9954
	5%	5%	5%	9%	5%	5%
grade 5 events	1223	8230	1428	5928	1588	1497
	0%	2%	0%	1%	0%	0%
grade 6 events	20023	97206	27473	124013	25739	24725
	12%	24%	14%	29%	13%	13%
grade 7 events	17585	33001	17037	20828	18561	17535
	10%	8%	8%	5%	9%	9%

2.2 Compared Parameters

Parameter	Planned	Actual	Parameter	Planned	Actual
Instrument	ACIS	ACIS	Obspar format version number	6	6
Detector	ACIS-456789	ACIS-456789	Obspar file type	PREDICTED	ACTUAL
Grating	NONE	NONE	Obspar update status	NONE	UPDATED
Data mode	FAINT	FAINT	On-chip summing requested	N	N
Observation mode	SECONDARY	SECONDARY	Subarray requested	NONE	NONE
Pointing RA	0	173.0150185035912	Alternating exposures requested	N	N
Pointing Dec	0	52.02716438757955	Primary exposure time	3.2	3.2
Pointing Roll	0.0	38.86449016595571			
SIM focus pos (mm)	-0.684267	-1.428180813131781			
SIM defocus (mm)	0	0.1051558262725154			
SIM translation stage pos (mm)	-190.132523	250.466033080201			
SIM translation stage offset (mm)	0	-0.01005468664627074			
Observation start time	88906737.236691	88906736.468207			
Observation start date	2000-10-26T00:18:57	2000-10-26T00:18:56			
Observation end time	88917245.53708901	88917244.768604			
Observation end date	2000-10-26T03:14:06	2000-10-26T03:14:04			
Read mode	TIMED	TIMED			

2.3 Star Slots

2.4 FID Slots

A Summary

A.1 Status

V&V Scientist	Jen Lauer
V&V Date (YYYY-MM-DD)	2007.06.14
V&V Edition	1
V&V Disposition and Status	OK
V&V Charge Time	4.95728132

A.2 Comments

Focal plane temperature is warmer than -118.7 C degrees during the first ksec of this observation. The ACIS spectral response calibration for the front-illuminated chips is less accurate at these warmer temperatures than it is at -119.7 C. The back-illuminated chips are not affected at the focal plane temperatures recorded for this observation. Users whose science objectives depend on the most accurate spectral response (i.e.: fitting line-rich spectra) may notice an effect. Users whose science objectives do not depend on the most accurate spectral response should not notice an effect.