

V&V Reference Report

L2 ASCDS Version : 8.4.5

Observation 61853 - L2 Version 4
Chandra X-Ray Center

L2 Processing Date : Sep 3 2012

Contents

| | | |
|----------|-------------------------------|----------|
| 1 | Front | 2 |
| 2 | OBI | 3 |
| 2.1 | OBI | 3 |
| 2.1.1 | Images | 3 |
| 2.1.2 | Bias | 3 |
| 2.1.3 | Parameters | 4 |
| 2.1.4 | Events | 4 |
| 2.2 | Compared Parameters | 5 |
| 2.3 | Star Slots | 6 |
| 2.4 | FID Slots | 6 |
| A | Summary | 7 |
| A.1 | Status | 7 |
| A.2 | Comments | 7 |

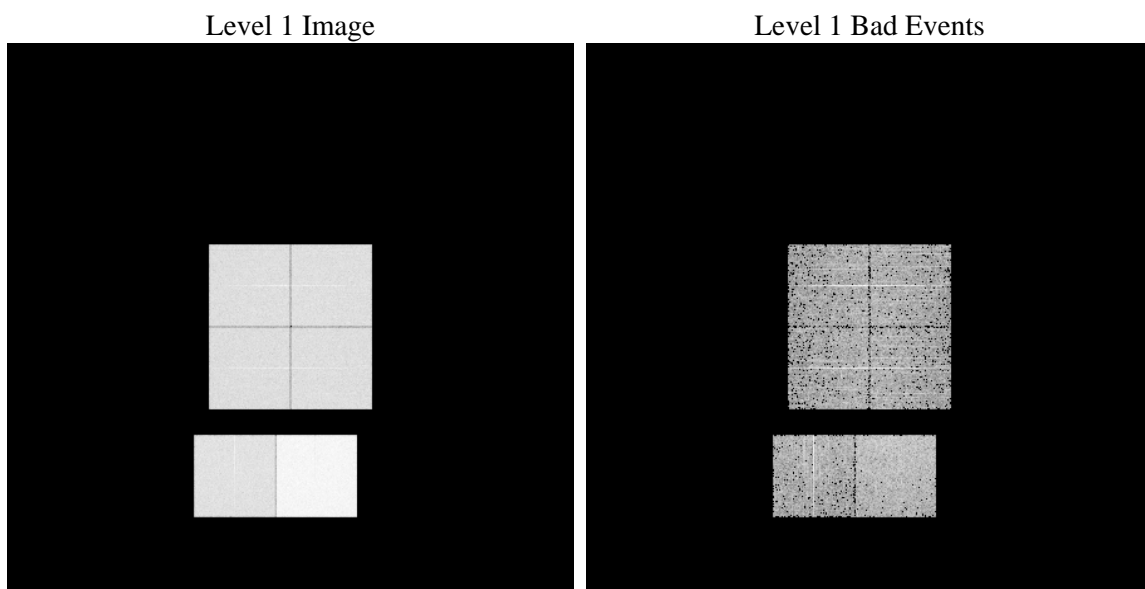
1 Front

| | | |
|----------|---|---|
| seq_num | | Sequence number |
| obs_id | 61853 | Observation id |
| title | ACIS-012367 diagnostics | Proposal title |
| observer | CHANDRA engineering request/realtime commanding | Principal investig |
| object | | Source name |
| dtcycle | 0 | |
| cycle | P | events from which exps? Prim/Second/Both |
| ra_targ | 0.0 | Observer's specified target RA [deg] |
| dec_targ | 0.0 | Observer's specified target Dec [deg] |
| ra_nom | 21.057243473452 | Nominal RA [deg] |
| dec_nom | -59.998056249473 | Nominal Dec [deg] |
| roll_nom | 331.4564121249 | Nominal Roll [deg] |
| revision | 4 | Processing version of data |
| ontime | 5483.7953636944 | Sum of GTIs [s] |
| livetime | 5414.3562448542 | Livetime [s] |
| ontime0 | 2401.0084726363 | Sum of GTIs [s] |
| ontime1 | 2427.5369099081 | Sum of GTIs [s] |
| ontime2 | 2294.6543699354 | Sum of GTIs [s] |
| ontime3 | 2339.5108624399 | Sum of GTIs [s] |
| ontime6 | 2547.4549310058 | Sum of GTIs [s] |
| ontime7 | 5483.7953636944 | Sum of GTIs [s] |
| l2events | 1258882 | Number of level 2 events |

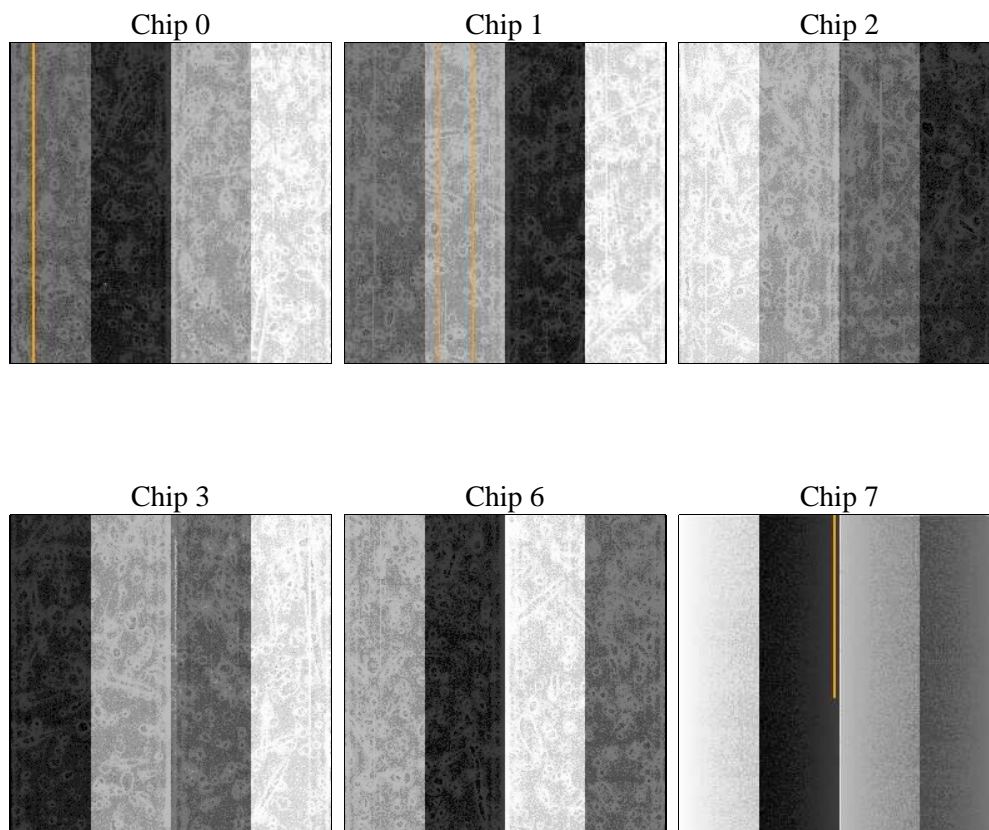
2 OBI

2.1 OBI

2.1.1 Images



2.1.2 Bias



2.1.3 Parameters

| | | | | | |
|----------|---------------------|--------------------------------|----------------|-----------------|---|
| obi_num | 0 | Obi number | sched_exp_time | 0.0 | [s] Scheduled observation exposure time |
| ascdsver | 8.4.5 | Processing system revision | ontime | 5483.7953636944 | Sum of GTIs [s] |
| caldsver | 4.5.1.1 | | ontime0 | 2401.0084726363 | Sum of GTIs [s] |
| date | 2012-09-03T19:06:22 | Date and time of file creation | ontime1 | 2427.5369099081 | Sum of GTIs [s] |
| revision | 4 | Processing version of data | ontime2 | 2294.6543699354 | Sum of GTIs [s] |
| | | | ontime3 | 2339.5108624399 | Sum of GTIs [s] |
| | | | ontime6 | 2547.4549310058 | Sum of GTIs [s] |
| | | | ontime7 | 5483.7953636944 | Sum of GTIs [s] |
| | | | l1events | 1429905 | Number of level 1 events |

2.1.4 Events

| | ccd 0 | ccd 1 | ccd 2 | ccd 3 | ccd 6 | ccd 7 | | ccd 0 | ccd 1 | ccd 2 | ccd 3 | ccd 6 | ccd 7 |
|-----------------|--------|--------|--------|--------|--------|--------|----------------|-------|-------|-------|-------|--------|--------|
| level 1 events | 193052 | 197293 | 188504 | 192312 | 217031 | 441713 | grade 0 events | 97438 | 98880 | 94401 | 97373 | 107611 | 106610 |
| rejected events | 17283 | 18543 | 17881 | 18109 | 19362 | 26935 | | 50% | 50% | 50% | 50% | 49% | 24% |
| rejected % | 8% | 9% | 9% | 9% | 8% | 6% | grade 1 events | 446 | 478 | 484 | 508 | 506 | 271 |
| | | | | | | | | 0% | 0% | 0% | 0% | 0% | 0% |
| | | | | | | | grade 2 events | 30780 | 31297 | 30126 | 30321 | 34444 | 92066 |
| | | | | | | | | 15% | 15% | 15% | 15% | 15% | 20% |
| | | | | | | | grade 3 events | 11017 | 11499 | 10980 | 11125 | 12287 | 42751 |
| | | | | | | | | 5% | 5% | 5% | 5% | 5% | 9% |
| | | | | | | | grade 4 events | 11105 | 11323 | 10740 | 10937 | 12335 | 42117 |
| | | | | | | | | 5% | 5% | 5% | 5% | 5% | 9% |
| | | | | | | | grade 5 events | 1376 | 1404 | 1256 | 1329 | 1568 | 6103 |
| | | | | | | | | 0% | 0% | 0% | 0% | 0% | 1% |
| | | | | | | | grade 6 events | 25429 | 25875 | 24376 | 24447 | 30992 | 131234 |
| | | | | | | | | 13% | 13% | 12% | 12% | 14% | 29% |
| | | | | | | | grade 7 events | 15461 | 16537 | 16141 | 16272 | 17288 | 20561 |
| | | | | | | | | 8% | 8% | 8% | 8% | 7% | 4% |

2.2 Compared Parameters

| Parameter | Planned | Actual |
|-----------------------------------|---------------------|----------------------|
| Instrument | ACIS | ACIS |
| Detector | ACIS-012367 | ACIS-012367 |
| Grating | NONE | NONE |
| Data mode | FAINT | FAINT |
| Observation mode | SECONDARY | SECONDARY |
| [deg] Pointing RA | 0 | 21.0572434734519 |
| [deg] Pointing Dec | 0 | -59.99805624947289 |
| [deg] Pointing Roll | 0.0 | 331.4564121249006 |
| [mm] SIM focus pos | -0.782348 | -0.6828225247311905 |
| [mm] SIM defocus | 0 | 0.8505141146731063 |
| [mm] SIM translation stage pos | -233.592463 | 250.466033080201 |
| [mm] SIM translation stage offset | 0 | -0.01005468664627074 |
| [s] Observation start time (MET) | 90686522.704 | 90686521.93557701 |
| Observation start date | 2000-11-15T14:42:03 | 2000-11-15T14:42:01 |
| [s] Observation end time (MET) | 90735552.55599999 | 90735551.78745 |
| Observation end date | 2000-11-16T04:19:13 | 2000-11-16T04:19:11 |
| Read mode | TIMED | TIMED |

| Parameter | Planned | Actual |
|---------------------------------|-----------|---------|
| Obspar format version number | 7 | 7 |
| Obspar file type | PREDICTED | ACTUAL |
| Obspar update status | NONE | UPDATED |
| On-chip summing requested | N | N |
| Subarray requested | NONE | NONE |
| Alternating exposures requested | N | N |
| [s] Primary exposure time | 0.000000 | 3.2 |

2.3 Star Slots

2.4 FID Slots

A Summary

A.1 Status

| | |
|----------------------------|-----------------|
| V&V Scientist | Jen Lauer |
| V&V Date (YYYY-MM-DD) | 2012.09.11 |
| V&V Edition | 1 |
| V&V Disposition and Status | OK |
| V&V Charge Time | 5.4837953636944 |

A.2 Comments