

V&V Reference Report

L2 ASCDS Version : 7.6.10

Observation 61853 - L2 Version 001
Chandra X-Ray Center

L2 Processing Date : Jun 16 2007

Contents

1	Front	2
2	OBI	3
2.1	OBI	3
2.1.1	Images	3
2.1.2	Bias	3
2.1.3	Parameters	4
2.1.4	Events	4
2.2	Compared Parameters	5
2.3	Star Slots	6
2.4	FID Slots	6
A	Summary	7
A.1	Status	7
A.2	Comments	7

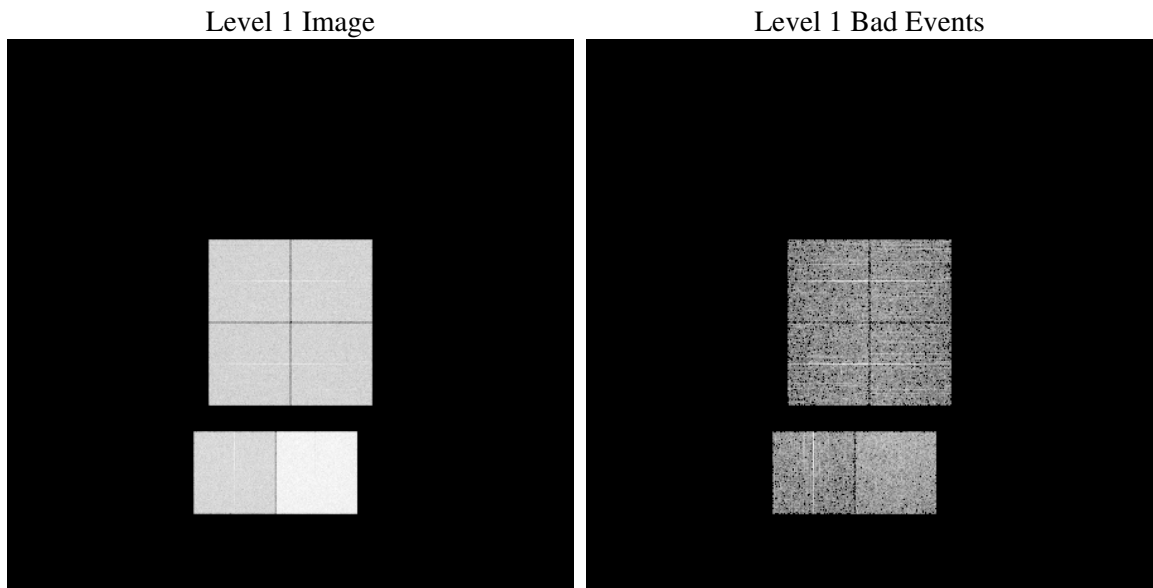
1 Front

seq_num	
obs_id	61853
title	ACIS-012367 diagnostics
observer	CHANDRA engineering request/realtime commanding
object	
dtcycle	0
cycle	P
ra_targ	0.0
dec_targ	0.0
ra_nom	21.057243473452
dec_nom	-59.998056249473
roll_nom	331.4564121249
revision	3
ontime	5482.4098978043
livetime	5412.9883225673
ontime0	2400.2641342729
ontime1	2426.2335240096
ontime2	2293.3920240402
ontime3	2338.6023640633
ontime6	2546.233625114
ontime7	5482.4098978043
l2events	1258880

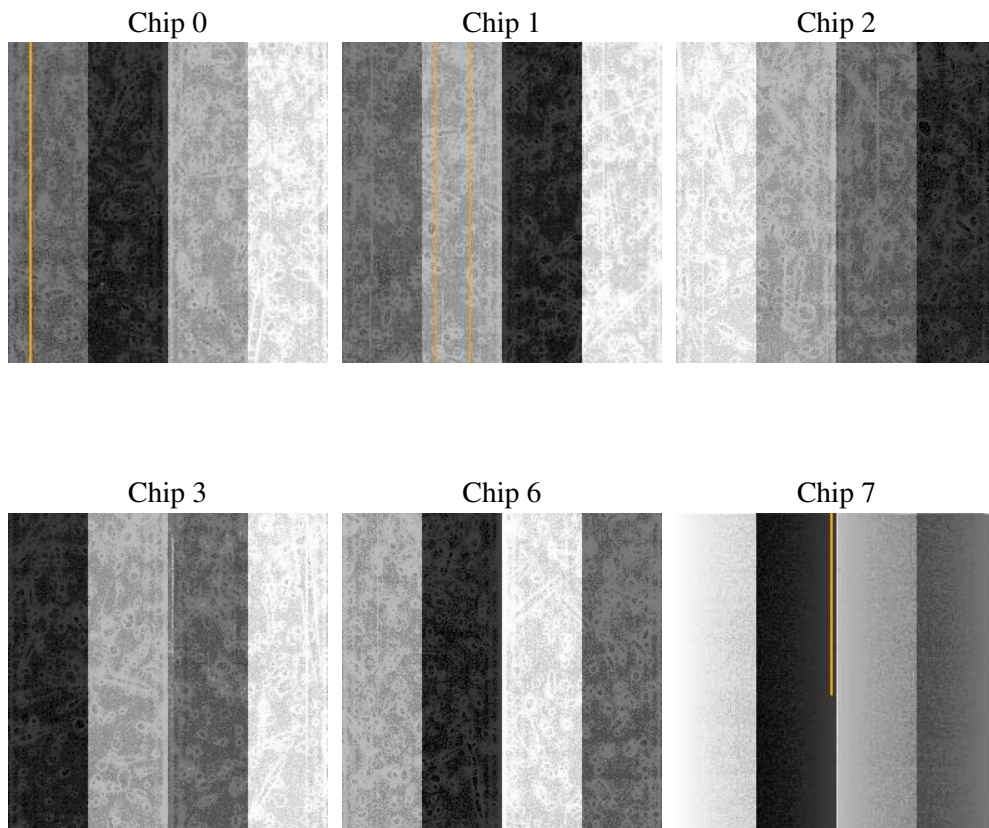
2 OBI

2.1 OBI

2.1.1 Images



2.1.2 Bias



2.1.3 Parameters

obi_num	0
ascdsver	7.6.10
caldsver	3.4.0
date	2007-06-17T00:03:57
revision	3

sched_exp_time	0.0
ontime	5482.4098978043
ontime0	2400.2641342729
ontime1	2426.2335240096
ontime2	2293.3920240402
ontime3	2338.6023640633
ontime6	2546.233625114
ontime7	5482.4098978043
l1events	1429905

2.1.4 Events

	ccd 0	ccd 1	ccd 2	ccd 3	ccd 6	ccd 7
level 1 events	193052	197293	188504	192312	217031	441713
rejected events	17283	18543	17880	18108	19359	26941
rejected %	8%	9%	9%	9%	8%	6%

	ccd 0	ccd 1	ccd 2	ccd 3	ccd 6	ccd 7
grade 0 events	97442	98885	94407	97374	107616	106588
	50%	50%	50%	50%	49%	24%
grade 1 events	447	479	484	508	506	271
	0%	0%	0%	0%	0%	0%
grade 2 events	30776	31291	30120	30320	34439	92090
	15%	15%	15%	15%	15%	20%
grade 3 events	11019	11499	10984	11125	12291	42736
	5%	5%	5%	5%	5%	9%
grade 4 events	11105	11324	10742	10939	12338	42101
	5%	5%	5%	5%	5%	9%
grade 5 events	1376	1406	1256	1330	1568	6102
	0%	0%	0%	0%	0%	1%
grade 6 events	25427	25875	24371	24446	30988	131257
	13%	13%	12%	12%	14%	29%
grade 7 events	15460	16534	16140	16270	17285	20568
	8%	8%	8%	8%	7%	4%

2.2 Compared Parameters

Parameter	Planned	Actual	Parameter	Planned	Actual
Instrument	ACIS	ACIS	Obspar format version number	6	6
Detector	ACIS-012367	ACIS-012367	Obspar file type	PREDICTED	ACTUAL
Grating	NONE	NONE	Obspar update status	NONE	UPDATED
Data mode	FAINT	FAINT	On-chip summing requested	N	N
Observation mode	SECONDARY	SECONDARY	Subarray requested	NONE	NONE
Pointing RA	0	21.05724347345193	Alternating exposures requested	N	N
Pointing Dec	0	-59.99805624947287	Primary exposure time	0.000000	3.2
Pointing Roll	0.0	331.4564121249005			
SIM focus pos (mm)	-0.782348	-0.6828225247311905			
SIM defocus (mm)	0	0.8505141146731063			
SIM translation stage pos (mm)	-233.592463	250.466033080201			
SIM translation stage offset (mm)	0	-0.01005468664627074			
Observation start time	90686522.704	90686521.93557701			
Observation start date	2000-11-15T14:42:03	2000-11-15T14:42:01			
Observation end time	90735552.55599999	90735551.78745			
Observation end date	2000-11-16T04:19:13	2000-11-16T04:19:11			
Read mode	TIMED	TIMED			

2.3 Star Slots

2.4 FID Slots

A Summary

A.1 Status

V&V Scientist	Jen Lauer
V&V Date (YYYY-MM-DD)	2007.06.18
V&V Edition	1
V&V Disposition and Status	OK
V&V Charge Time	5.48240989

A.2 Comments