

# V&V Reference Report

## L2 ASCDS Version : 7.6.10

Observation 61839 - L2 Version 001  
Chandra X-Ray Center

L2 Processing Date : Jun 18 2007

## Contents

<b>1</b>	<b>Front</b>	<b>2</b>
<b>2</b>	<b>OBI</b>	<b>3</b>
2.1	OBI . . . . .	3
2.1.1	Images . . . . .	3
2.1.2	Bias . . . . .	3
2.1.3	Parameters . . . . .	4
2.1.4	Events . . . . .	4
2.2	Compared Parameters . . . . .	5
2.3	Star Slots . . . . .	6
2.4	FID Slots . . . . .	6
<b>A</b>	<b>Summary</b>	<b>7</b>
A.1	Status . . . . .	7
A.2	Comments . . . . .	7

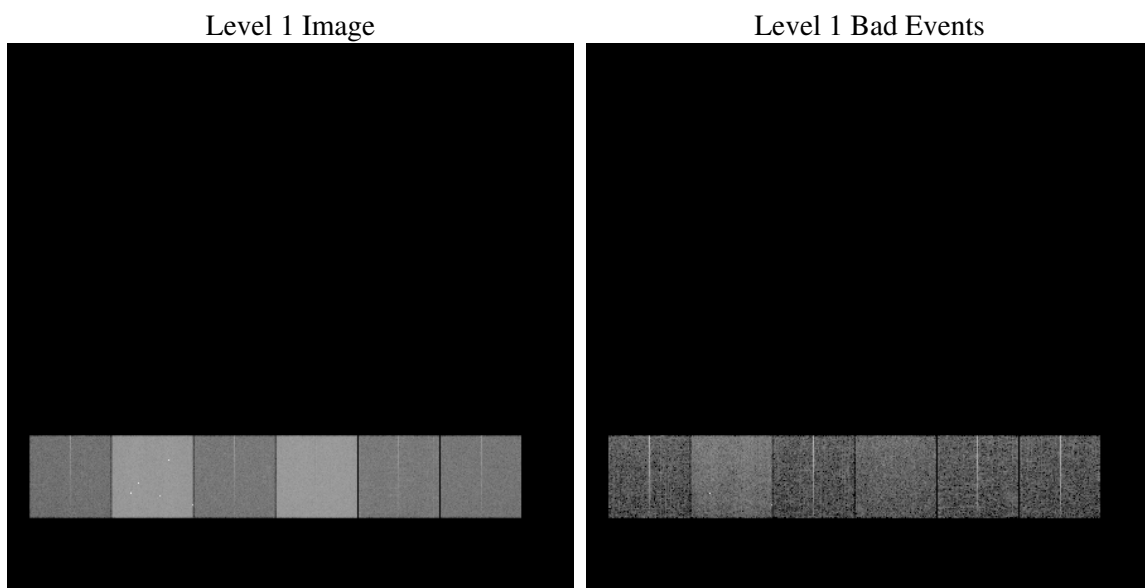
# 1 Front

seq_num	&#160
obs_id	61839
title	ACIS-456789 diagnostics
observer	CHANDRA engineering request/realtime commanding
object	&#160
dtcycle	0
cycle	P
ra_targ	0.0
dec_targ	0.0
ra_nom	208.55529973411
dec_nom	69.405890273591
roll_nom	31.811157772278
revision	2
ontime	5202.7907188833
livetime	5136.9098500563
ontime4	1709.1016273201
ontime5	5536.6512911469
ontime6	1981.3078668565
ontime7	5202.7907188833
ontime8	2017.0413867682
ontime9	1945.5333368629
l2events	1305139

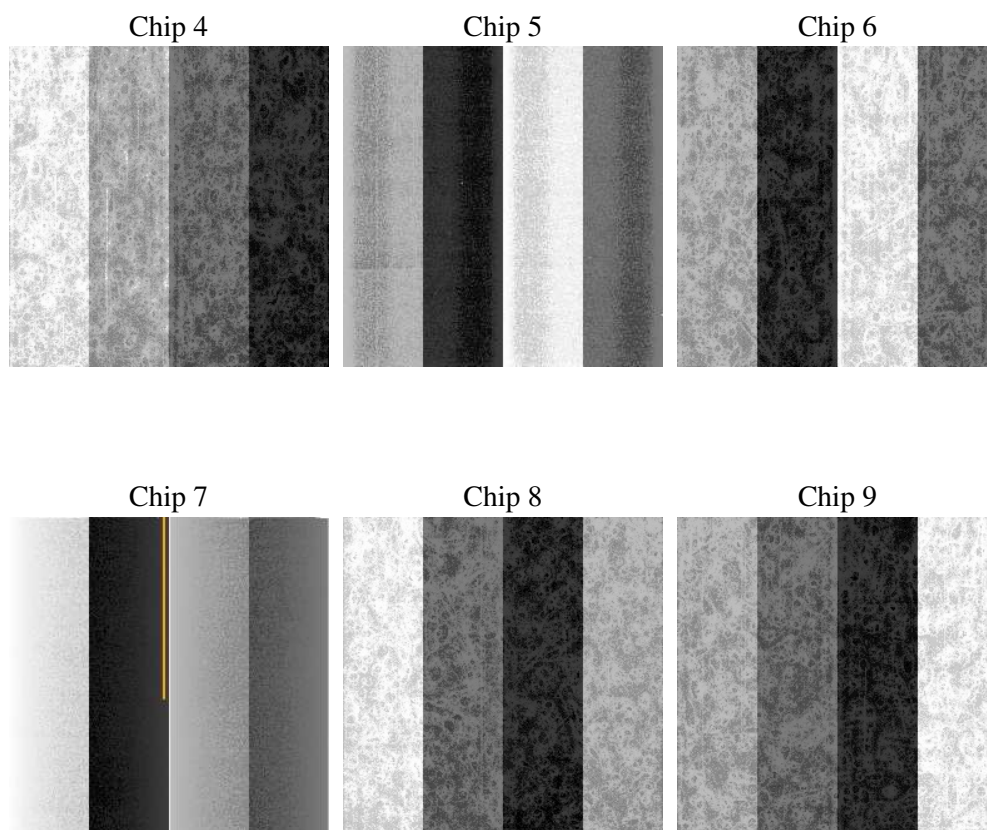
## 2 OBI

### 2.1 OBI

#### 2.1.1 Images



#### 2.1.2 Bias



### 2.1.3 Parameters

obi_num	1
ascdsver	7.6.10
caldsver	3.4.0
date	2007-06-18T18:43:39
revision	2

sched_exp_time	0.0
ontime	5202.7907188833
ontime4	1709.1016273201
ontime5	5536.6512911469
ontime6	1981.3078668565
ontime7	5202.7907188833
ontime8	2017.0413867682
ontime9	1945.5333368629
l1events	1545704

### 2.1.4 Events

	ccd 4	ccd 5	ccd 6	ccd 7	ccd 8	ccd 9
level 1 events	146768	428894	177101	439505	184834	168602
rejected events	25957	47958	25094	31429	26467	24363
rejected %	17%	11%	14%	7%	14%	14%

	ccd 4	ccd 5	ccd 6	ccd 7	ccd 8	ccd 9
grade 0 events	67814	91265	82818	102299	85979	78941
	46%	21%	46%	23%	46%	46%
grade 1 events	585	416	621	328	642	607
	0%	0%	0%	0%	0%	0%
grade 2 events	21639	138043	26156	89657	28109	25538
	14%	32%	14%	20%	15%	15%
grade 3 events	7501	24006	9439	41543	10523	8912
	5%	5%	5%	9%	5%	5%
grade 4 events	7434	23408	9450	40677	10295	8974
	5%	5%	5%	9%	5%	5%
grade 5 events	1264	9437	1524	6704	1750	1476
	0%	2%	0%	1%	0%	0%
grade 6 events	16654	104441	24377	134180	23740	22144
	11%	24%	13%	30%	12%	13%
grade 7 events	23877	37878	22716	24117	23796	22010
	16%	8%	12%	5%	12%	13%

## 2.2 Compared Parameters

Parameter	Planned	Actual	Parameter	Planned	Actual
Instrument	ACIS	ACIS	Obspar format version number	6	6
Detector	ACIS-456789	ACIS-456789	Obspar file type	PREDICTED	ACTUAL
Grating	NONE	NONE	Obspar update status	NONE	UPDATED
Data mode	FAINT	FAINT	On-chip summing requested	N	N
Observation mode	SECONDARY	SECONDARY	Subarray requested	NONE	NONE
Pointing RA	0	208.5552997341139	Alternating exposures requested	N	N
Pointing Dec	0	69.40589027359106	Primary exposure time	3.2	3.2
Pointing Roll	0.0	31.81115777227808			
SIM focus pos (mm)	-0.684267	-0.6828225247311905			
SIM defocus (mm)	0	0.8505141146731063			
SIM translation stage pos (mm)	-190.132523	250.466033080201			
SIM translation stage offset (mm)	0	-0.01005468664627074			
Observation start time	91644664.04067101	91644663.272168			
Observation start date	2000-11-26T16:51:04	2000-11-26T16:51:03			
Observation end time	91655174.391073	91655173.62256999			
Observation end date	2000-11-26T19:46:14	2000-11-26T19:46:13			
Read mode	TIMED	TIMED			

## **2.3 Star Slots**

## **2.4 FID Slots**

## A Summary

### A.1 Status

V&V Scientist	Jen Lauer
V&V Date (YYYY-MM-DD)	2007.06.19
V&V Edition	1
V&V Disposition and Status	OK
V&V Charge Time	5.20279071

### A.2 Comments