

# V&V Reference Report

## L2 ASCDS Version : 7.6.10

Observation 61836 - L2 Version 001  
Chandra X-Ray Center

L2 Processing Date : Jun 18 2007

## Contents

<b>1</b>	<b>Front</b>	<b>2</b>
<b>2</b>	<b>OBI</b>	<b>3</b>
2.1	OBI . . . . .	3
2.1.1	Images . . . . .	3
2.1.2	Bias . . . . .	3
2.1.3	Parameters . . . . .	4
2.1.4	Events . . . . .	4
2.2	Compared Parameters . . . . .	5
2.3	Star Slots . . . . .	6
2.4	FID Slots . . . . .	6
<b>A</b>	<b>Summary</b>	<b>7</b>
A.1	Status . . . . .	7
A.2	Comments . . . . .	7

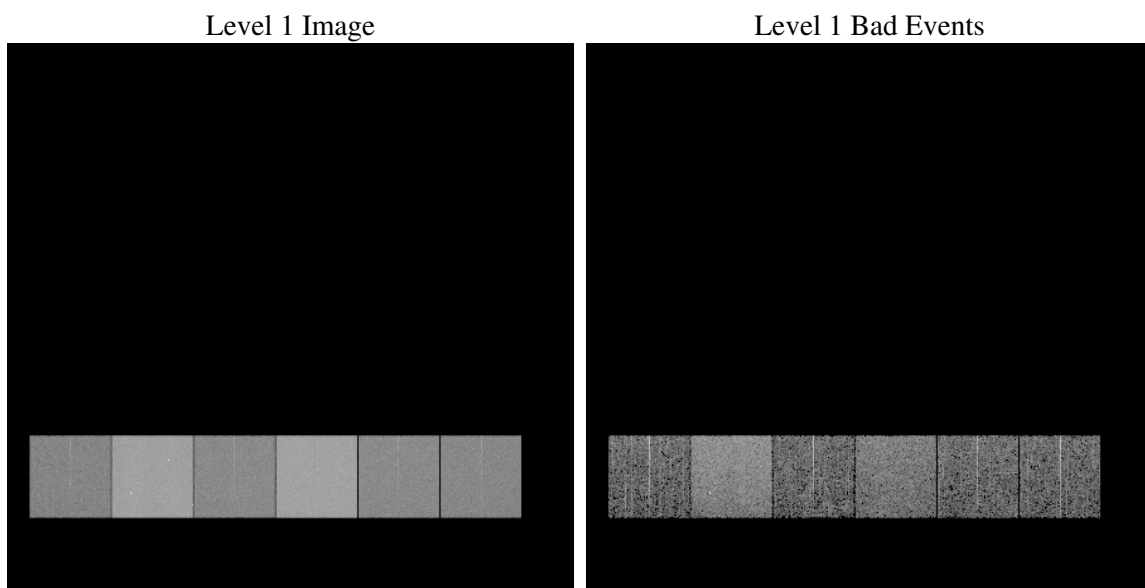
# 1 Front

seq_num	&#160
obs_id	61836
title	ACIS-456789 diagnostics
observer	CHANDRA engineering request/realtime commanding
object	&#160
dtcycle	0
cycle	P
ra_targ	0.0
dec_targ	0.0
ra_nom	80.018783985477
dec_nom	-19.977380838572
roll_nom	19.488788294696
revision	3
ontime	4993.1711825281
livetime	4929.9446424882
ontime4	2230.2067306936
ontime5	5331.768963486
ontime6	2410.08540456
ontime7	4993.1711825281
ontime8	2442.4958044589
ontime9	2353.202060461
l2events	1354242

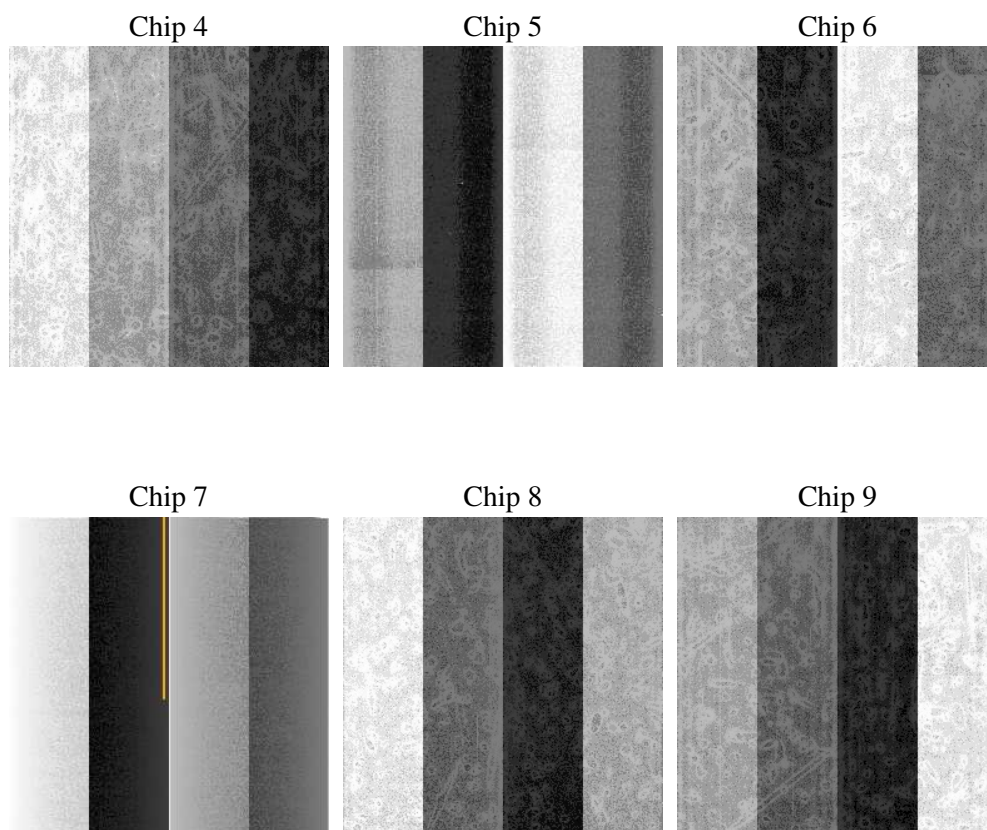
## 2 OBI

### 2.1 OBI

#### 2.1.1 Images



#### 2.1.2 Bias



### 2.1.3 Parameters

obi_num	1
ascdsver	7.6.10
caldsver	3.4.0
date	2007-06-18T19:44:07
revision	3

sched_exp_time	0.0
ontime	4993.1711825281
ontime4	2230.2067306936
ontime5	5331.768963486
ontime6	2410.08540456
ontime7	4993.1711825281
ontime8	2442.4958044589
ontime9	2353.202060461
l1events	1556655

### 2.1.4 Events

	ccd 4	ccd 5	ccd 6	ccd 7	ccd 8	ccd 9
level 1 events	178090	381930	204048	396489	205433	190665
rejected events	19194	38886	18763	25820	19282	18406
rejected %	10%	10%	9%	6%	9%	9%

	ccd 4	ccd 5	ccd 6	ccd 7	ccd 8	ccd 9
grade 0 events	91548	88982	102579	96586	103964	95944
	51%	23%	50%	24%	50%	50%
grade 1 events	439	250	485	257	470	441
	0%	0%	0%	0%	0%	0%
grade 2 events	28118	121798	32698	83113	33047	30840
	15%	31%	16%	20%	16%	16%
grade 3 events	9790	23074	11447	38077	11896	10742
	5%	6%	5%	9%	5%	5%
grade 4 events	9683	22890	11406	38047	11771	10635
	5%	5%	5%	9%	5%	5%
grade 5 events	1276	7396	1423	5016	1501	1418
	0%	1%	0%	1%	0%	0%
grade 6 events	21658	90169	29354	118882	27415	26315
	12%	23%	14%	29%	13%	13%
grade 7 events	15578	27371	14656	16511	15369	14330
	8%	7%	7%	4%	7%	7%

## 2.2 Compared Parameters

Parameter	Planned	Actual	Parameter	Planned	Actual
Instrument	ACIS	ACIS	Obspar format version number	6	6
Detector	ACIS-456789	ACIS-456789	Obspar file type	PREDICTED	ACTUAL
Grating	NONE	NONE	Obspar update status	NONE	UPDATED
Data mode	FAINT	FAINT	On-chip summing requested	N	N
Observation mode	SECONDARY	SECONDARY	Subarray requested	NONE	NONE
Pointing RA	0	80.01878398547709	Alternating exposures requested	N	N
Pointing Dec	0	-19.97738083857164	Primary exposure time	3.2	3.2
Pointing Roll	0.0	19.48878829469636			
SIM focus pos (mm)	-0.684267	-0.6828225247311905			
SIM defocus (mm)	0	0.8505141146731063			
SIM translation stage pos (mm)	-190.132523	250.466033080201			
SIM translation stage offset (mm)	0	-0.01005468664627074			
Observation start time	91873542.44938099	91873541.680911			
Observation start date	2000-11-29T08:25:42	2000-11-29T08:25:41			
Observation end time	91885774.799849	91885774.031378			
Observation end date	2000-11-29T11:49:35	2000-11-29T11:49:34			
Read mode	TIMED	TIMED			

## **2.3 Star Slots**

## **2.4 FID Slots**

## A Summary

### A.1 Status

V&V Scientist	Jen Lauer
V&V Date (YYYY-MM-DD)	2007.06.19
V&V Edition	1
V&V Disposition and Status	OK
V&V Charge Time	4.99317118

### A.2 Comments