

# V&V Reference Report

## L2 ASCDS Version : 7.6.10

Observation 61810 - L2 Version 001  
Chandra X-Ray Center

L2 Processing Date : Jun 22 2007

## Contents

<b>1</b>	<b>Front</b>	<b>2</b>
<b>2</b>	<b>OBI</b>	<b>3</b>
2.1	OBI . . . . .	3
2.1.1	Images . . . . .	3
2.1.2	Bias . . . . .	3
2.1.3	Parameters . . . . .	4
2.1.4	Events . . . . .	4
2.2	Compared Parameters . . . . .	5
2.3	Star Slots . . . . .	6
2.4	FID Slots . . . . .	6
<b>A</b>	<b>Summary</b>	<b>7</b>
A.1	Status . . . . .	7
A.2	Comments . . . . .	7

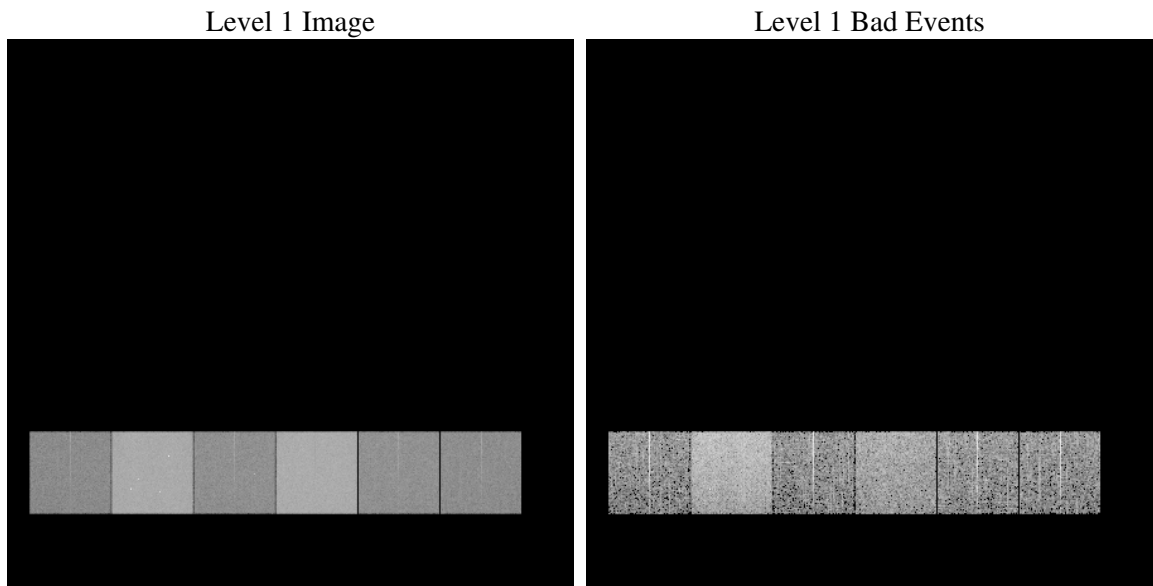
# 1 Front

seq_num	&#160
obs_id	61810
title	ACIS-456789 diagnostics
observer	CHANDRA engineering request/realtime commanding
object	&#160
dtcycle	0
cycle	P
ra_targ	0.0
dec_targ	0.0
ra_nom	316.51944520659
dec_nom	61.644853122504
roll_nom	317.11880216292
revision	3
ontime	5209.5821331441
livetime	5143.6152673405
ontime4	2170.0467401892
ontime5	5588.7747005522
ontime6	2345.0219095498
ontime7	5209.5821331441
ontime8	2402.8698915392
ontime9	2260.6315703392
l2events	1350090

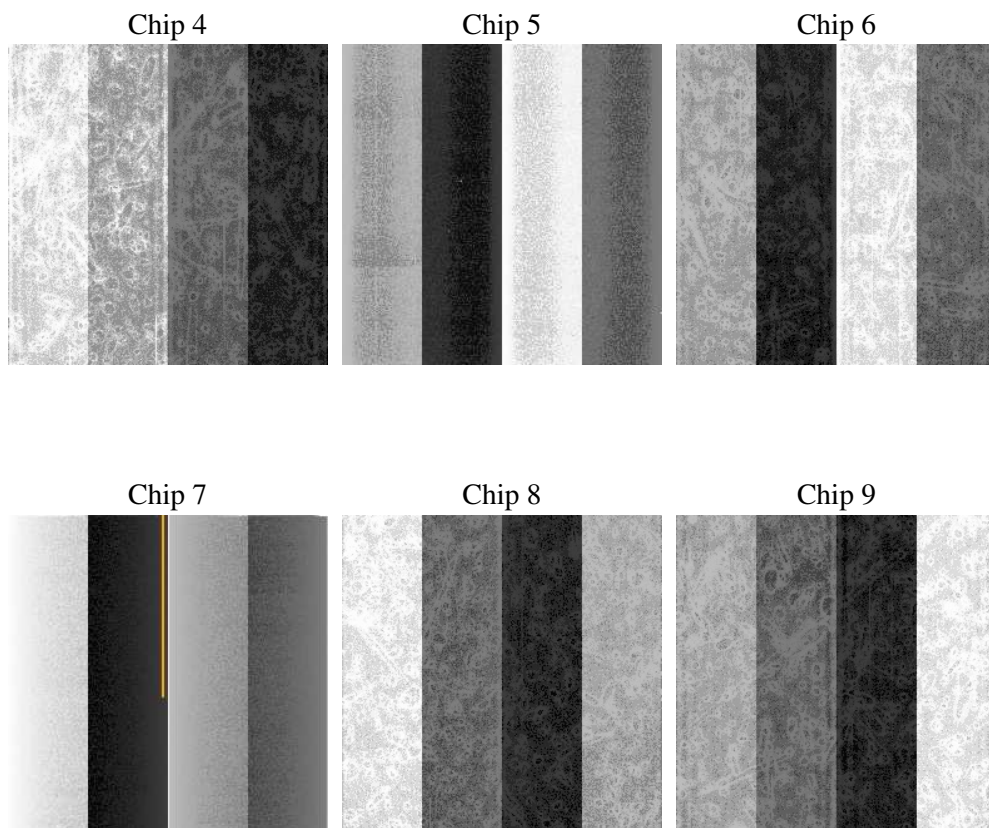
## 2 OBI

### 2.1 OBI

#### 2.1.1 Images



#### 2.1.2 Bias



### 2.1.3 Parameters

obi_num	0
ascdsver	7.6.10
caldsver	3.4.0
date	2007-06-22T11:46:11
revision	3

sched_exp_time	0.0
ontime	5209.5821331441
ontime4	2170.0467401892
ontime5	5588.7747005522
ontime6	2345.0219095498
ontime7	5209.5821331441
ontime8	2402.8698915392
ontime9	2260.6315703392
l1events	1554964

### 2.1.4 Events

	ccd 4	ccd 5	ccd 6	ccd 7	ccd 8	ccd 9
level 1 events	170359	397056	195214	410300	200481	181554
rejected events	18574	41186	18439	27048	20321	18712
rejected %	10%	10%	9%	6%	10%	10%

	ccd 4	ccd 5	ccd 6	ccd 7	ccd 8	ccd 9
grade 0 events	86594	89077	97048	98402	99350	89888
	50%	22%	49%	23%	49%	49%
grade 1 events	502	253	493	277	483	496
	0%	0%	0%	0%	0%	0%
grade 2 events	26607	126678	30715	85268	31758	28831
	15%	31%	15%	20%	15%	15%
grade 3 events	9424	23215	11165	39178	11498	10225
	5%	5%	5%	9%	5%	5%
grade 4 events	9309	23178	10889	39270	11502	9955
	5%	5%	5%	9%	5%	5%
grade 5 events	1255	8095	1446	5814	1648	1474
	0%	2%	0%	1%	0%	0%
grade 6 events	20563	94990	27730	122515	26548	24622
	12%	23%	14%	29%	13%	13%
grade 7 events	16105	31570	15728	19576	17694	16063
	9%	7%	8%	4%	8%	8%

## 2.2 Compared Parameters

Parameter	Planned	Actual	Parameter	Planned	Actual
Instrument	ACIS	ACIS	Obspar format version number	6	6
Detector	ACIS-456789	ACIS-456789	Obspar file type	PREDICTED	ACTUAL
Grating	NONE	NONE	Obspar update status	NONE	UPDATED
Data mode	FAINT	FAINT	On-chip summing requested	N	N
Observation mode	SECONDARY	SECONDARY	Subarray requested	NONE	NONE
Pointing RA	0	316.5194452065867	Alternating exposures requested	N	N
Pointing Dec	0	61.64485312250398	Primary exposure time	0.000000	3.2
Pointing Roll	0.0	317.118802162922			
SIM focus pos (mm)	-0.684267	-0.7809083437167272			
SIM defocus (mm)	0	0.7524282956875696			
SIM translation stage pos (mm)	-190.132523	250.466033080201			
SIM translation stage offset (mm)	0	-0.01005468664627074			
Observation start time	93688518.219	93688517.45026501			
Observation start date	2000-12-20T08:35:18	2000-12-20T08:35:17			
Observation end time	93710914.47	93710913.701122			
Observation end date	2000-12-20T14:48:34	2000-12-20T14:48:33			
Read mode	TIMED	TIMED			

## **2.3 Star Slots**

## **2.4 FID Slots**

## A Summary

### A.1 Status

V&V Scientist	Jen Lauer
V&V Date (YYYY-MM-DD)	2007.06.22
V&V Edition	1
V&V Disposition and Status	OK
V&V Charge Time	5.20958213

### A.2 Comments