

V&V Reference Report

L2 ASCDS Version : 7.6.10

Observation 61804 - L2 Version 001
Chandra X-Ray Center

L2 Processing Date : Jun 22 2007

Contents

1	Front	2
2	OBI	3
2.1	OBI	3
2.1.1	Images	3
2.1.2	Bias	3
2.1.3	Parameters	4
2.1.4	Events	4
2.2	Compared Parameters	5
2.3	Star Slots	6
2.4	FID Slots	6
A	Summary	7
A.1	Status	7
A.2	Comments	7

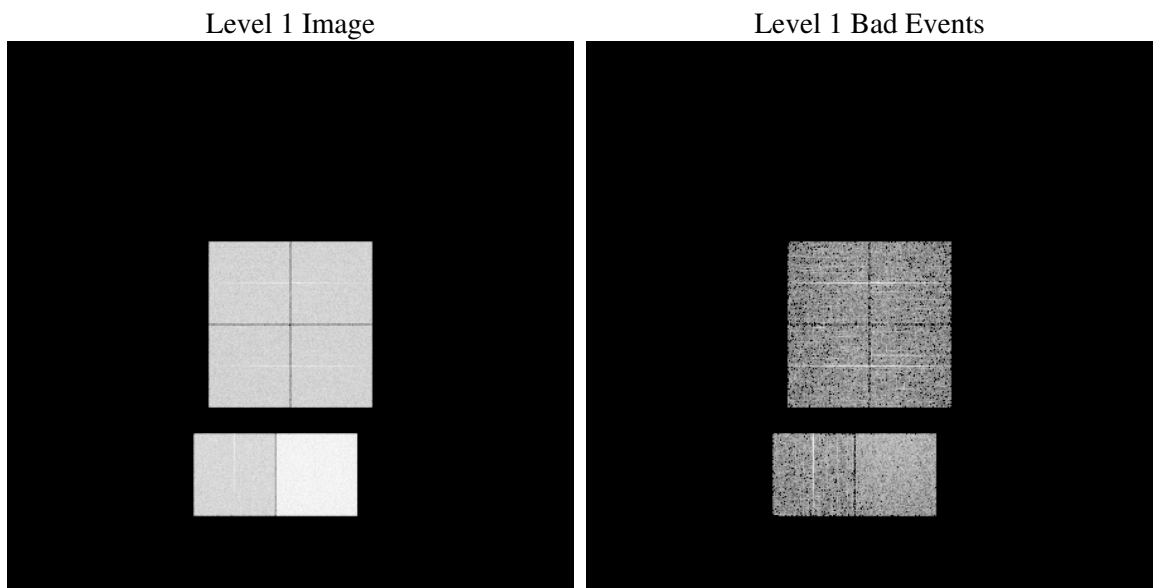
1 Front

seq_num	
obs_id	61804
title	ACIS-012367 diagnostics
observer	CHANDRA engineering request/realtime commanding
object	
dtcycle	0
cycle	P
ra_targ	0.0
dec_targ	0.0
ra_nom	92.629486140721
dec_nom	-30.586640796807
roll_nom	355.05944925078
revision	3
ontime	5690.7004948705
livetime	5618.641418676
ontime0	2459.4696652442
ontime1	2485.4387062043
ontime2	2349.3566547185
ontime3	2414.0128858536
ontime6	2624.8854759634
ontime7	5690.7004948705
l2events	1259036

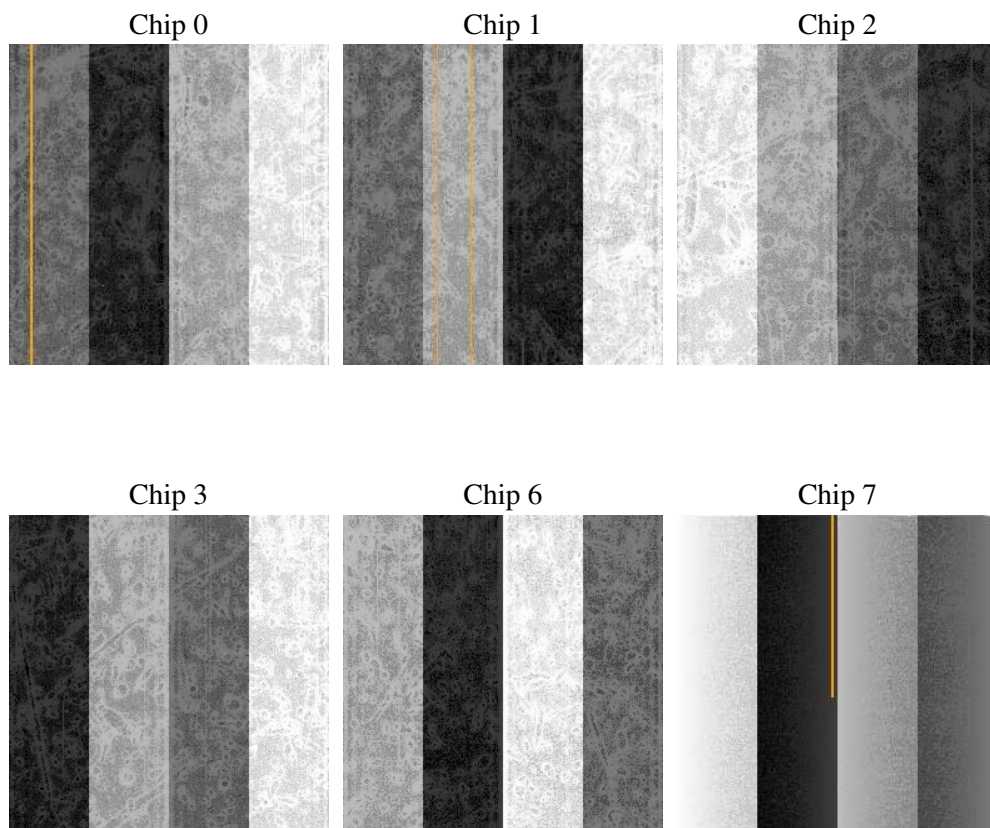
2 OBI

2.1 OBI

2.1.1 Images



2.1.2 Bias



2.1.3 Parameters

obi_num	0
ascdsver	7.6.10
caldsver	3.4.0
date	2007-06-22T12:47:14
revision	3

sched_exp_time	0.0
ontime	5690.7004948705
ontime0	2459.4696652442
ontime1	2485.4387062043
ontime2	2349.3566547185
ontime3	2414.0128858536
ontime6	2624.8854759634
ontime7	5690.7004948705
l1events	1430282

2.1.4 Events

	ccd 0	ccd 1	ccd 2	ccd 3	ccd 6	ccd 7
level 1 events	193342	194926	187119	192294	216951	445650
rejected events	17661	17651	17592	18050	19418	27103
rejected %	9%	9%	9%	9%	8%	6%

	ccd 0	ccd 1	ccd 2	ccd 3	ccd 6	ccd 7
grade 0 events	96283	97768	94677	97530	107911	108010
	49%	50%	50%	50%	49%	24%
grade 1 events	499	495	473	509	517	309
	0%	0%	0%	0%	0%	0%
grade 2 events	31273	31423	29649	30482	34189	93646
	16%	16%	15%	15%	15%	21%
grade 3 events	11197	11117	10506	10980	12280	42683
	5%	5%	5%	5%	5%	9%
grade 4 events	11153	11325	10585	11195	12013	42840
	5%	5%	5%	5%	5%	9%
grade 5 events	1374	1432	1313	1293	1626	6119
	0%	0%	0%	0%	0%	1%
grade 6 events	25775	25642	24110	24057	31140	131368
	13%	13%	12%	12%	14%	29%
grade 7 events	15788	15724	15806	16248	17275	20675
	8%	8%	8%	8%	7%	4%

2.2 Compared Parameters

Parameter	Planned	Actual	Parameter	Planned	Actual
Instrument	ACIS	ACIS	Obspar format version number	6	6
Detector	ACIS-012367	ACIS-012367	Obspar file type	PREDICTED	ACTUAL
Grating	NONE	NONE	Obspar update status	NONE	UPDATED
Data mode	FAINT	FAINT	On-chip summing requested	N	N
Observation mode	SECONDARY	SECONDARY	Subarray requested	NONE	NONE
Pointing RA	0	92.62948614072147	Alternating exposures requested	N	N
Pointing Dec	0	-30.58664079680661	Primary exposure time	0.000000	3.2
Pointing Roll	0.0	355.0594492507787			
SIM focus pos (mm)	-0.782348	-0.6828225247311905			
SIM defocus (mm)	0	0.8505141146731063			
SIM translation stage pos (mm)	-233.592463	250.466033080201			
SIM translation stage offset (mm)	0	-0.01005468664627074			
Observation start time	94342281.69400001	94342280.925282			
Observation start date	2000-12-27T22:11:22	2000-12-27T22:11:20			
Observation end time	94355672.294	94355671.525795			
Observation end date	2000-12-28T01:54:32	2000-12-28T01:54:31			
Read mode	TIMED	TIMED			

2.3 Star Slots

2.4 FID Slots

A Summary

A.1 Status

V&V Scientist	Beth Sundheim
V&V Date (YYYY-MM-DD)	2007.06.22
V&V Edition	1
V&V Disposition and Status	OK
V&V Charge Time	5.69070049

A.2 Comments