

V&V Reference Report

L2 ASCDS Version : 8.3.2

Observation 62775 - L2 Version 4
Chandra X-Ray Center

L2 Processing Date : Aug 15 2010

Contents

1	Front	2
2	OBI	3
2.1	OBI	3
2.1.1	Images	3
2.1.2	Bias	3
2.1.3	Parameters	4
2.1.4	Events	4
2.2	Compared Parameters	5
2.3	Star Slots	6
2.4	FID Slots	6
A	Summary	7
A.1	Status	7
A.2	Comments	7

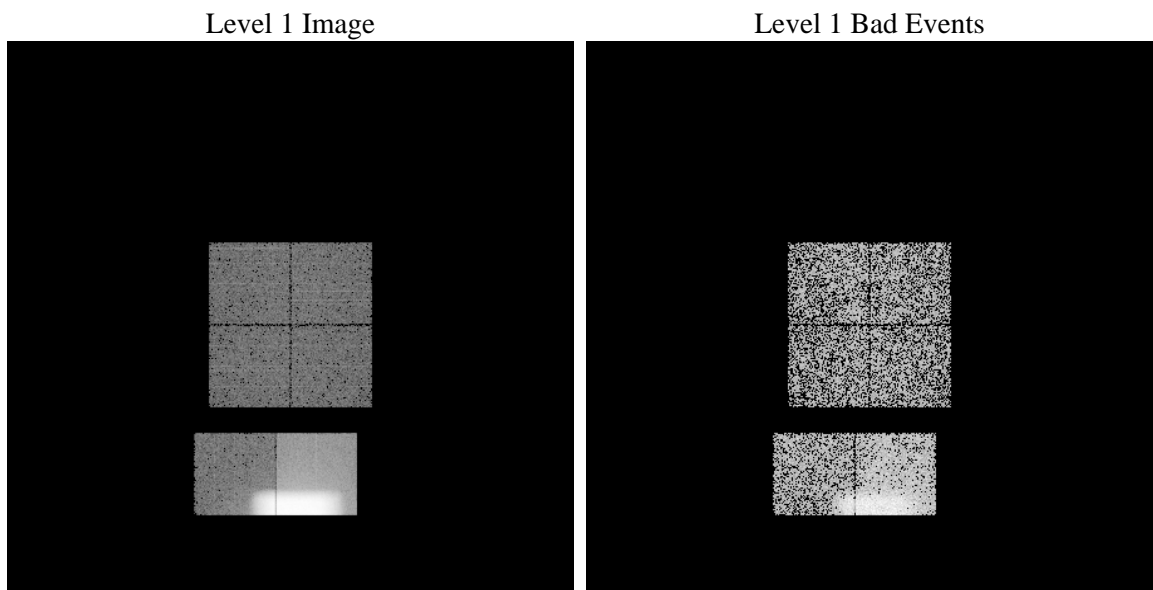
1 Front

seq_num	0	Sequence number
obs_id	62775	Observation id
title	ACIS-I internal cal	Proposal title
observer	CHANDRA orbital activation and checkout	Principal investigator
object	 	Source name
dtcycle	0	
cycle	P	events from which exps? Prim/Second/Both
ra_targ	0.0	Target RA
dec_targ	0.0	Target Dec
ra_nom	292.27694624152	Nominal RA
dec_nom	29.773207363203	Nominal Dec
roll_nom	194.36971339637	Nominal Roll
revision	4	Processing version of data
ontime	6704.9148505852	Sum of GTIs [s]
livetime	6622.5543564073	Livetime [s]
ontime0	6704.8738105819	Sum of GTIs [s]
ontime1	6701.4917804524	Sum of GTIs [s]
ontime2	6704.7917305827	Sum of GTIs [s]
ontime3	6704.7506905869	Sum of GTIs [s]
ontime6	6704.7096505836	Sum of GTIs [s]
ontime7	6704.9148505852	Sum of GTIs [s]
l2events	545478	Number of level 2 events

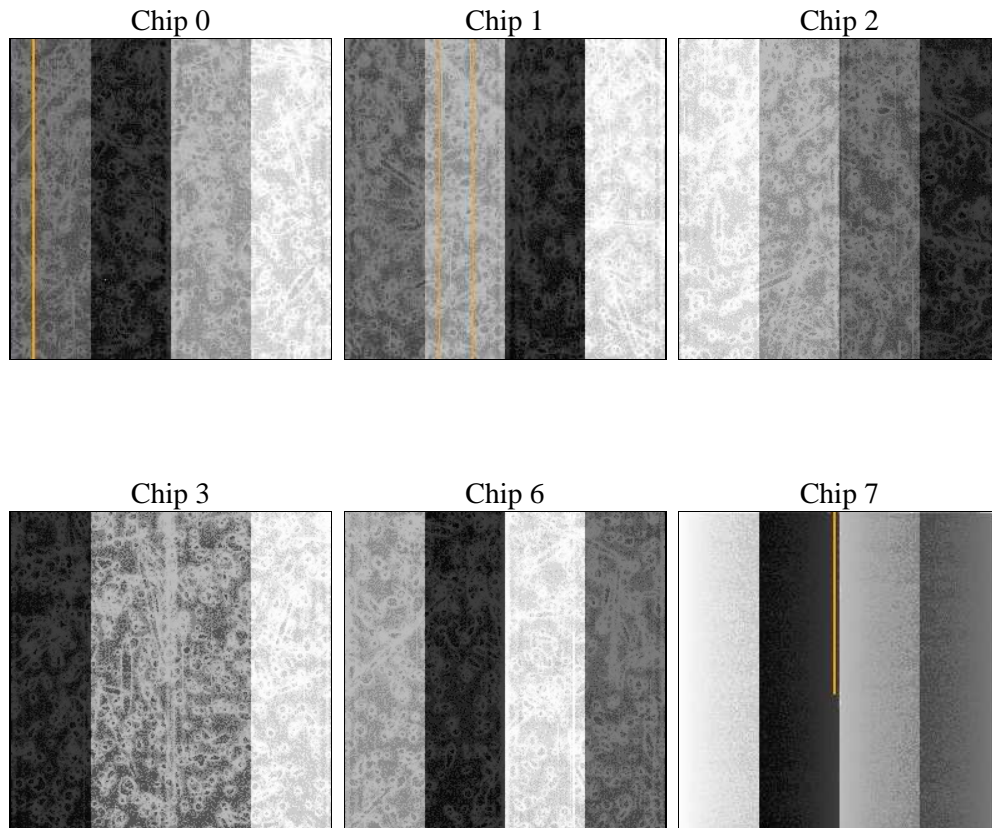
2 OBI

2.1 OBI

2.1.1 Images



2.1.2 Bias



2.1.3 Parameters

obi_num	0	ObI number		
ascdsver	8.3.2	ASCDS version number	sched_exp_time	0.0
caldsver	4.3.0	 		
date	2010-08-15T12:02:16	Date and time of file creation	ontime	6704.9148505852
revision	4	Processing version of data	ontime0	6704.8738105819
			ontime1	6701.4917804524
			ontime2	6704.7917305827
			ontime3	6704.7506905869
			ontime6	6704.7096505836
			ontime7	6704.9148505852
			l1events	591513

2.1.4 Events

	ccd 0	ccd 1	ccd 2	ccd 3	ccd 6	ccd 7
level 1 events	16974	17232	16776	16401	96039	428091
rejected events	4822	4774	4537	4696	6730	13652
rejected %	28%	27%	27%	28%	7%	3%

	ccd 0	ccd 1	ccd 2	ccd 3	ccd 6	ccd 7
grade 0 events	3023	2991	3138	2951	36444	84898
	17%	17%	18%	17%	37%	19%
grade 1 events	36	33	27	26	283	402
	0%	0%	0%	0%	0%	0%
grade 2 events	2578	2628	2758	2474	16885	95527
	15%	15%	16%	15%	17%	22%
grade 3 events	1193	1213	1226	1115	6688	34104
	7%	7%	7%	6%	6%	7%
grade 4 events	1079	1107	1051	1057	6518	33774
	6%	6%	6%	6%	6%	7%
grade 5 events	4733	4672	4449	4622	5990	11181
	27%	27%	26%	28%	6%	2%
grade 6 events	4332	4588	4127	4156	23231	168205
	25%	26%	24%	25%	24%	39%
grade 7 events	0	0	0	0	0	0
	0%	0%	0%	0%	0%	0%

2.2 Compared Parameters

Parameter	Planned	Actual	Parameter	Planned	Actual
Instrument	ACIS	ACIS	Obspar format version number	6	6
Detector	ACIS-012367	ACIS-012367	Obspar file type	PREDICTED	ACTUAL
Grating	NONE	NONE	Obspar update status	NONE	UPDATED
Data mode	FAINT	FAINT	On-chip summing requested	N	N
Observation mode	SECONDARY	SECONDARY	Subarray requested	NONE	NONE
Pointing RA	0	292.2769462415239	Alternating exposures requested	N	N
Pointing Dec	0	29.77320736320303	Primary exposure time	0	3.3
Pointing Roll	0.0	194.3697133963691			
SIM focus pos (mm)	-0.782348	0			
SIM defocus (mm)	0	0			
SIM translation stage pos (mm)	-233.592463	0			
SIM translation stage offset (mm)	0	0			
Observation start time	49703746.25	49703745.041053			
Observation start date	1999-07-30T06:35:46	1999-07-30T06:35:45			
Observation stop time	49717360.429	49717359.091509			
Observation end date	1999-07-30T10:22:40	1999-07-30T10:22:39			
Read mode	TIMED	TIMED			

2.3 Star Slots

2.4 FID Slots

A Summary

A.1 Status

V&V Scientist	Beth Sundheim
V&V Date (YYYY-MM-DD)	2010.08.16
V&V Edition	1
V&V Disposition and Status	OK
V&V Charge Time	6.7049148505852

A.2 Comments

This ACIS internal calibration observation was acquired before the ACIS door was open. A reflection of the door is visible in the image.

==

Focal plane temperature is warmer than -118.7 C degrees during this observation. The ACIS spectral response calibration for the front-illuminated chips is less accurate at these warmer temperatures than it is at -119.7 C. The back-illuminated chips are not affected at the focal plane temperatures recorded for this observation.