

V&V Reference Report

L2 ASCDS Version : 8.1.2

Observation 62742 - L2 Version 3

Chandra X-Ray Center

L2 Processing Date : Mar 31 2010

Contents

1	Front	2
2	OBI	3
2.1	OBI	3
2.1.1	Images	3
2.1.2	Bias	3
2.1.3	Parameters	4
2.1.4	Events	4
2.2	Compared Parameters	5
2.3	Star Slots	6
2.4	FID Slots	6
A	Summary	7
A.1	Status	7
A.2	Comments	7

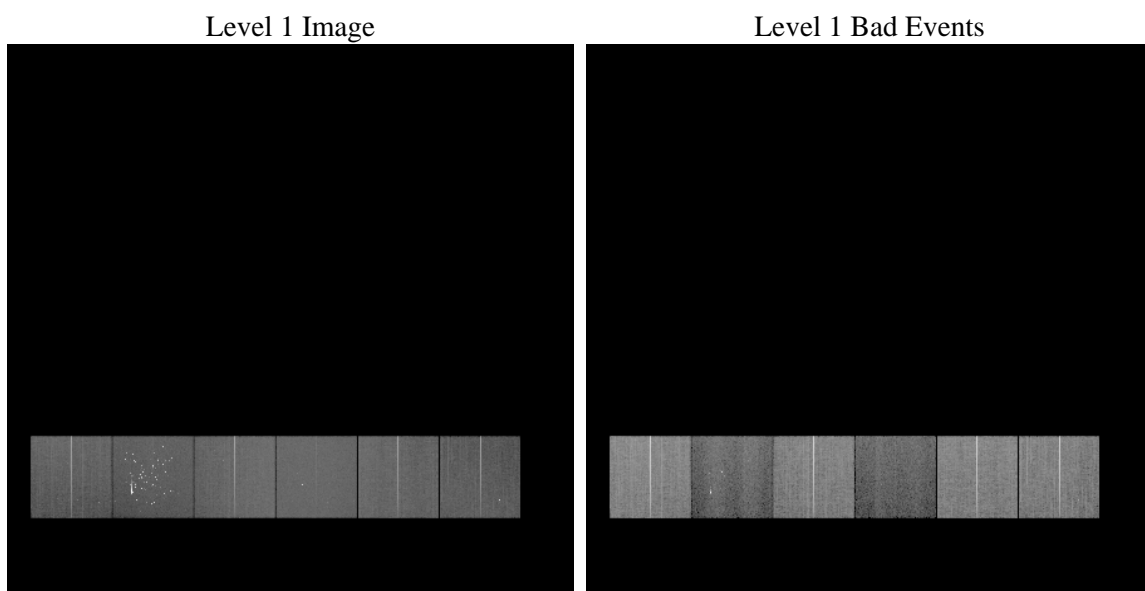
1 Front

seq_num	0	Sequence number
obs_id	62742	Observation id
title	ACIS-S FCM	Proposal title
observer	CHANDRA orbital activation and checkout	Principal investigator
object	 	Source name
dtcycle	0	
cycle	P	events from which exps? Prim/Second/Both
ra_targ	0.0	Observer's specified target RA
dec_targ	0.0	Observer's specified target Dec
ra_nom	7.1260011645489	Nominal RA
dec_nom	-67.407595523032	Nominal Dec
roll_nom	52.331567145525	Nominal Roll
revision	3	Processing version of data
ontime	18295.199983478	Sum of GTIs [s]
livetime	18070.469059178	Livetime [s]
ontime4	18295.199983478	Sum of GTIs [s]
ontime5	18295.199983478	Sum of GTIs [s]
ontime6	18291.859152898	Sum of GTIs [s]
ontime7	18295.199983478	Sum of GTIs [s]
ontime8	18295.199983478	Sum of GTIs [s]
ontime9	18295.199983478	Sum of GTIs [s]
l2events	947682	Number of level 2 events

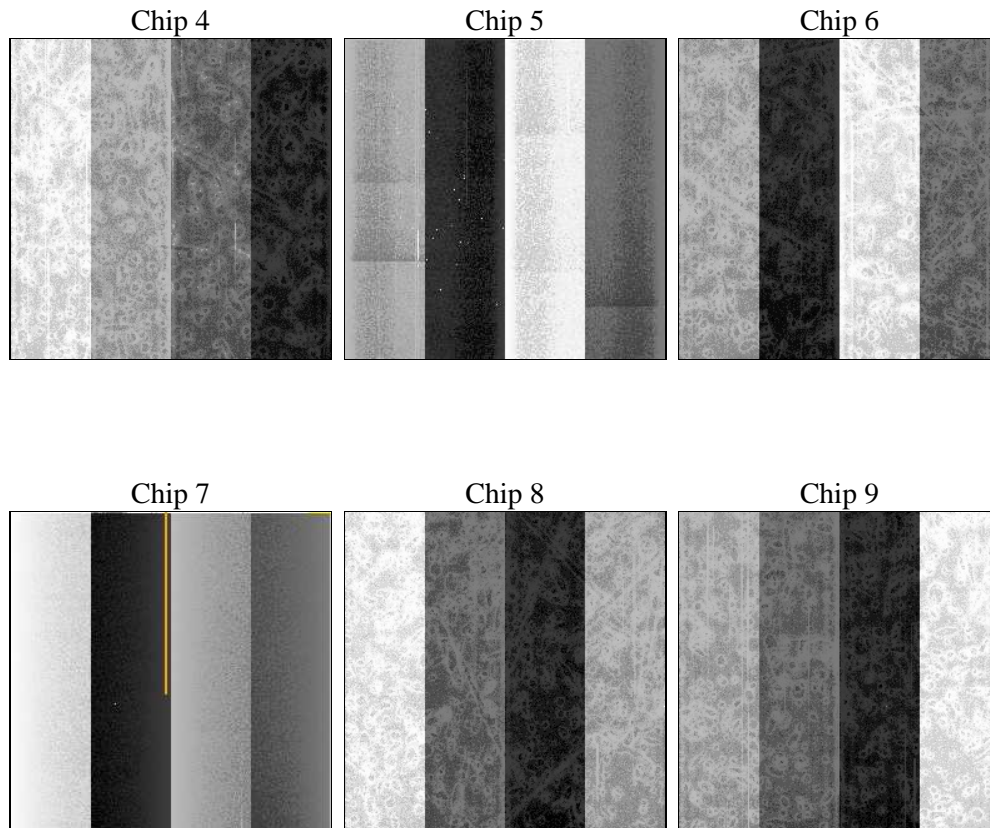
2 OBI

2.1 OBI

2.1.1 Images



2.1.2 Bias



2.1.3 Parameters

obi_num	0	Obi number		
ascdsver	8.2.1	ASCDS version number	sched_exp_time	0.0
caldbver	4.1.5	 		Scheduled observation exposure time
date	2010-03-31T21:12:24	Date and time of file creation	ontime	18295.199983478
revision	3	Processing version of data	ontime4	18295.199983478
			ontime5	18295.199983478
			ontime6	18291.859152898
			ontime7	18295.199983478
			ontime8	18295.199983478
			ontime9	18295.199983478
			l1events	1938839
				Number of level 1 events

2.1.4 Events

	ccd 4	ccd 5	ccd 6	ccd 7	ccd 8	ccd 9		ccd 4	ccd 5	ccd 6	ccd 7	ccd 8	ccd 9
level 1 events	272457	398693	357044	331574	332956	246115	grade 0 events	44194	160737	100056	56925	80615	50261
rejected events	186919	62931	159424	48975	169698	150327		16%	40%	28%	17%	24%	20%
rejected %	68%	15%	44%	14%	50%	61%	grade 1 events	410	1733	702	261	564	391
								0%	0%	0%	0%	0%	0%
							grade 2 events	15579	62918	34316	55870	31316	16097
								5%	15%	9%	16%	9%	6%
							grade 3 events	6044	24615	13177	32617	11394	6557
								2%	6%	3%	9%	3%	2%
							grade 4 events	5930	22357	13354	28481	11097	6582
								2%	5%	3%	8%	3%	2%
							grade 5 events	2652	10948	3722	10141	5034	3406
								0%	2%	1%	3%	1%	1%
							grade 6 events	13801	65183	36758	108756	28886	16305
								5%	16%	10%	32%	8%	6%
							grade 7 events	183847	50202	154959	38523	164050	146516
								67%	12%	43%	11%	49%	59%

2.2 Compared Parameters

Parameter	Planned	Actual	Parameter	Planned	Actual
Instrument	ACIS	ACIS	Obspar format version number	6	6
Detector	ACIS-456789	ACIS-456789	Obspar file type	PREDICTED	ACTUAL
Grating	NONE	NONE	Obspar update status	NONE	UPDATED
Data mode	FAINT	FAINT	On-chip summing requested	N	N
Observation mode	SECONDARY	SECONDARY	Subarray requested	NONE	NONE
Pointing RA	0	7.126001164548895	Alternating exposures requested	N	N
Pointing Dec	0	-67.40759552303248	Primary exposure time	0.000000	3.3
Pointing Roll	0.0	52.33156714552465			
SIM focus pos (mm)	-0.684267	0.255451383487682			
SIM defocus (mm)	0	0.9397188447875782			
SIM translation stage pos (mm)	-190.132523	-190.1325231039672			
SIM translation stage offset (mm)	0	5.209593894051068e-07			
Observation start time	50821897.353	50821895.030087			
Observation start date	1999-08-12T05:11:37	1999-08-12T05:11:35			
Observation end time	50842209.029	50842206.430803			
Observation end date	1999-08-12T10:50:09	1999-08-12T10:50:06			
Read mode	TIMED	TIMED			

2.3 Star Slots

2.4 FID Slots

A Summary

A.1 Status

V&V Scientist	Beth Sundheim
V&V Date (YYYY-MM-DD)	2010.04.01
V&V Edition	1
V&V Disposition and Status	OK
V&V Charge Time	18.295199983478

A.2 Comments

The focal plane temperature is warmer than -100C during this observation. This reprocessing of the data applies no CTI correction because none is available for this temperature at present.

The ACIS CTI correction has not been calibrated at this temperature because it was early in the mission and ACIS had not yet been lowered to the standard -119.7 C. Both front and back illuminated chips are affected. However, a T_GAIN correction has been applied to the BI chips (ACIS-5 and ACIS-7) data included here.

==

Observation contains a sprinkling of cosmic ray hits.