

V&V Reference Report

L2 ASCDS Version : 8.1.1

Observation 62533 - L2 Version 6

Chandra X-Ray Center

L2 Processing Date : Sep 23 2010

Contents

1	Front	2
2	OBI	3
2.1	OBI	3
2.1.1	Images	3
2.1.2	Bias	3
2.1.3	Parameters	4
2.1.4	Events	4
2.2	Compared Parameters	5
2.3	Star Slots	6
2.4	FID Slots	6
A	Summary	7
A.1	Status	7
A.2	Comments	7

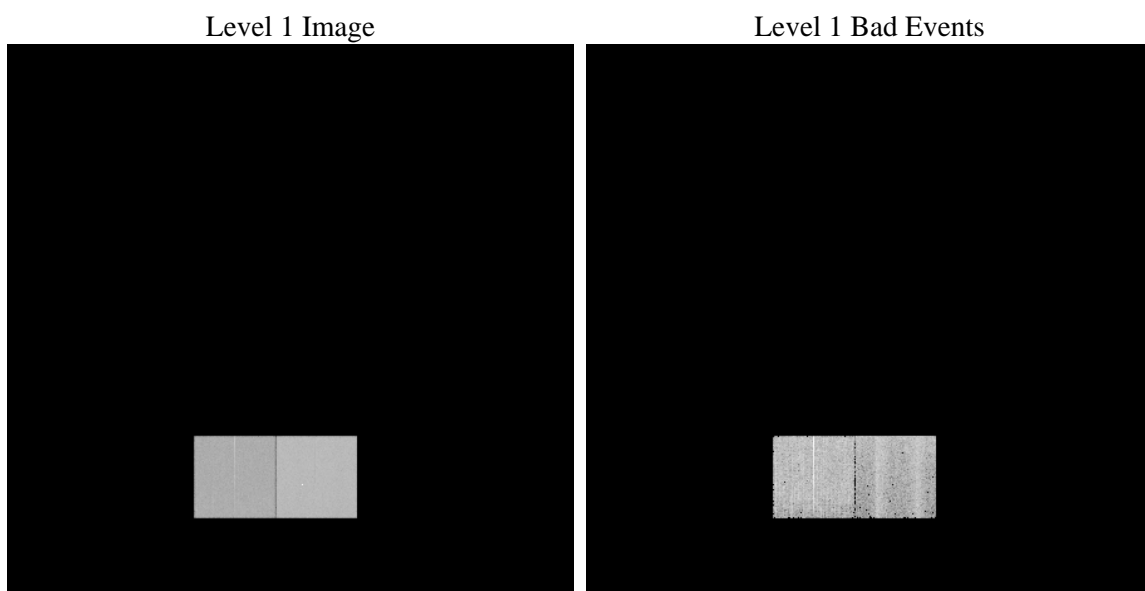
1 Front

seq_num	 	Sequence number
obs_id	62533	Observation id
title	ACIS-456789 diagnostics	Proposal title
observer	CHANDRA engineering request/realtime commanding	Principal investig
object	 	Source name
dtcycle	0	
cycle	P	events from which exps? Prim/Second/Both
ra_targ	0.0	Observer's specified target RA
dec_targ	0.0	Observer's specified target Dec
ra_nom	119.99402094214	Nominal RA
dec_nom	-66.595147891034	Nominal Dec
roll_nom	122.89643705405	Nominal Roll
revision	6	Processing version of data
ontime	3947.440943256	Sum of GTIs [s]
livetime	3897.4560691689	Livetime [s]
ontime4	2375.4934140667	Sum of GTIs [s]
ontime5	3947.3999032527	Sum of GTIs [s]
ontime6	2692.9860399738	Sum of GTIs [s]
ontime7	3947.440943256	Sum of GTIs [s]
ontime8	2657.6319764853	Sum of GTIs [s]
ontime9	2605.7771419734	Sum of GTIs [s]
l2events	640754	Number of level 2 events

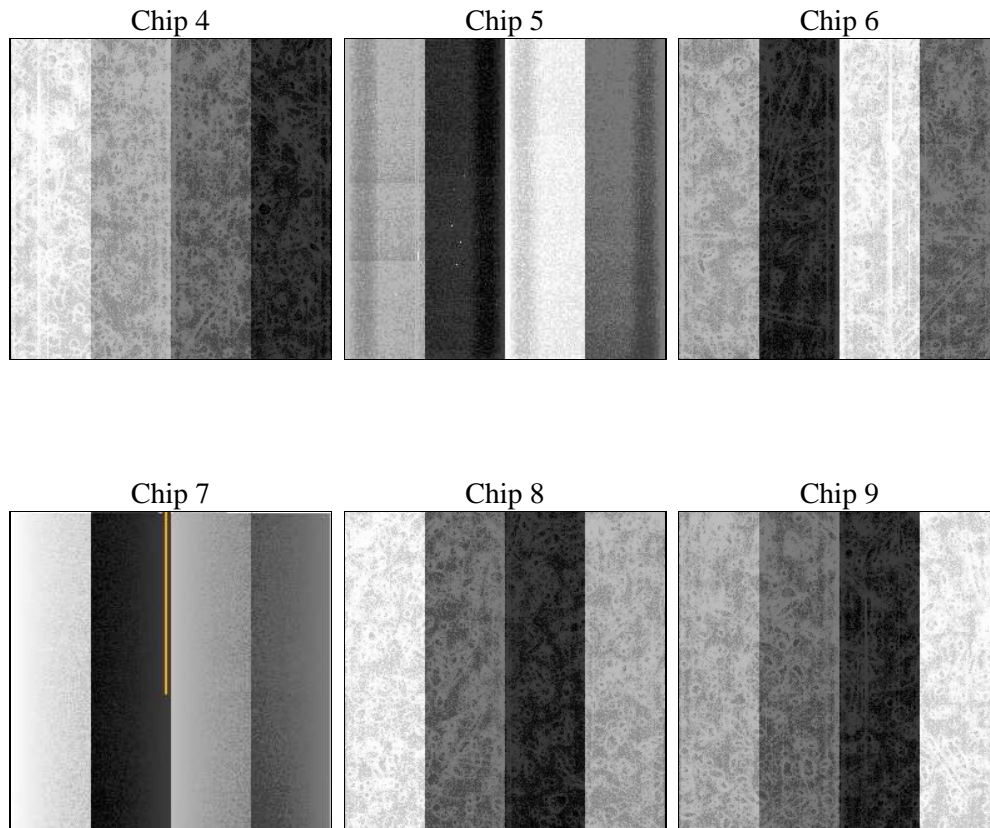
2 OBI

2.1 OBI

2.1.1 Images



2.1.2 Bias



2.1.3 Parameters

obi_num	0	Obi number		
ascdsver	8.3.2.1	ASCDS version number	sched_exp_time	0.0
caldsver	4.3.1	 		
date	2010-09-23T16:30:03	Date and time of file creation	ontime	3947.440943256
revision	3	Processing version of data	ontime4	2375.4934140667
			ontime5	3947.3999032527
			ontime6	2692.9860399738
			ontime7	3947.440943256
			ontime8	2657.6319764853
			ontime9	2605.7771419734
			l1events	730141

2.1.4 Events

	ccd 4	ccd 5	ccd 6	ccd 7	ccd 8	ccd 9
level 1 events	0	0	290327	439814	0	0
rejected events	0	0	47135	34599	0	0
rejected %	0%	0%	16%	7%	0%	0%

	ccd 4	ccd 5	ccd 6	ccd 7	ccd 8	ccd 9
grade 0 events	0	0	33992	82165	0	0
	0%	0%	11%	18%	0%	0%
grade 1 events	0	0	118	221	0	0
	0%	0%	0%	0%	0%	0%
grade 2 events	0	0	151342	82857	0	0
	0%	0%	52%	18%	0%	0%
grade 3 events	0	0	3629	52595	0	0
	0%	0%	1%	11%	0%	0%
grade 4 events	0	0	3627	41479	0	0
	0%	0%	1%	9%	0%	0%
grade 5 events	0	0	2115	5439	0	0
	0%	0%	0%	1%	0%	0%
grade						

2.2 Compared Parameters

Parameter	Planned	Actual	Parameter	Planned	Actual
Instrument	ACIS	ACIS	Obspar format version number	6	6
Detector	ACIS-456789	ACIS-456789	Obspar file type	PREDICTED	ACTUAL
Grating	NONE	NONE	Obspar update status	NONE	UPDATED
Data mode	FAINT	FAINT	On-chip summing requested	N	N
Observation mode	SECONDARY	SECONDARY	Subarray requested	NONE	NONE
Pointing RA	0	119.9940209421377	Alternating exposures requested	N	N
Pointing Dec	0	-66.59514789103449	Primary exposure time	0.000000	3.2
Pointing Roll	0.0	122.8964370540487			
SIM focus pos (mm)	-0.684267	-0.7809083437167272			
SIM defocus (mm)	0	0.7524282956875696			
SIM translation stage pos (mm)	-190.132523	250.466033080201			
SIM translation stage offset (mm)	0	-0.01005468664627074			
Observation start time	54061358.648	54061357.879754			
Observation start date	1999-09-18T17:02:39	1999-09-18T17:02:37			
Observation end time	54068558.249	54068557.480012			
Observation end date	1999-09-18T19:02:38	1999-09-18T19:02:37			
Read mode	TIMED	TIMED			

2.3 Star Slots

2.4 FID Slots

A Summary

A.1 Status

V&V Scientist	Beth Sundheim
V&V Date (YYYY-MM-DD)	2010.09.23
V&V Edition	1
V&V Disposition and Status	OK
V&V Charge Time	3.947440943256

A.2 Comments

The ACIS focal plane temperature is warmer than -118.7 C degrees during the interval 54062805.88 - 54066751.48 (MET s) of this observation. This temperature is the upper limit of the verified ACIS calibration for the front-illuminated chips. The focal plane temperature is warmer than -116.7 C during the interval 54062805.88 - 54066751.48 (MET s) of this observation. This temperature is the upper limit of the verified ACIS calibration for the back-illuminated chips. The ACIS spectral response calibration is less accurate at these warmer temperatures than it is at -119.7 C.