

V&V Reference Report

L2 ASCDS Version : 8.3.2.1

Observation 62509 - L2 Version 3

Chandra X-Ray Center

L2 Processing Date : Sep 28 2010

Contents

1	Front	2
2	OBI	3
2.1	OBI	3
2.1.1	Images	3
2.1.2	Bias	3
2.1.3	Parameters	4
2.1.4	Events	4
2.2	Compared Parameters	5
2.3	Star Slots	6
2.4	FID Slots	6
A	Summary	7
A.1	Status	7
A.2	Comments	7

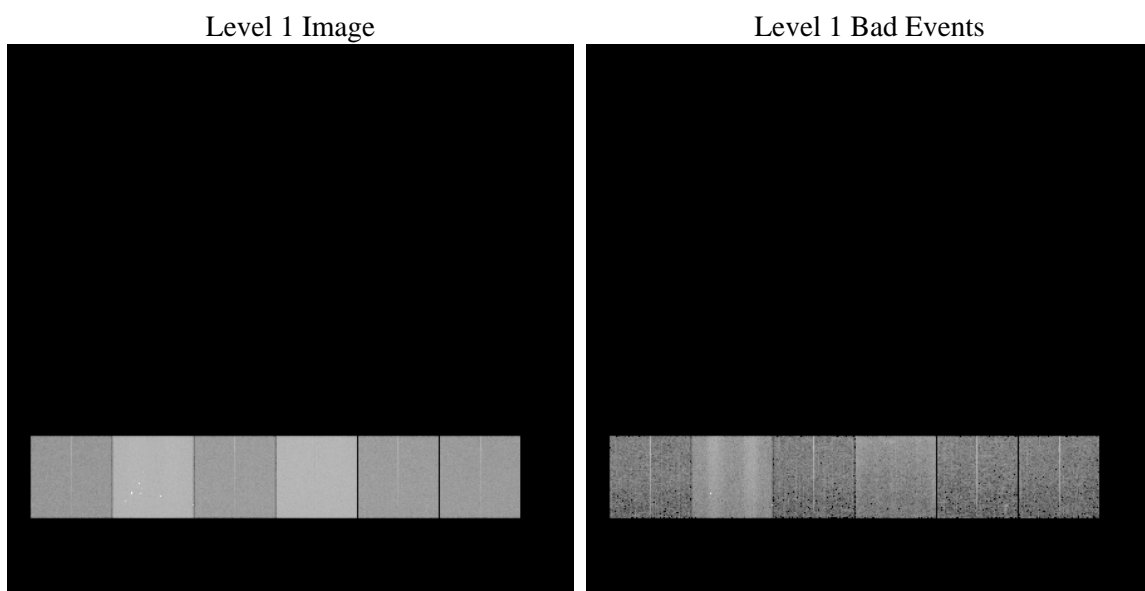
1 Front

seq_num	 	Sequence number
obs_id	62509	Observation id
title	ACIS-456789 diagnostics	Proposal title
observer	CHANDRA engineering request/realtime commanding	Principal investig
object	 	Source name
dtcycle	0	
cycle	P	events from which exps? Prim/Second/Both
ra_targ	0.0	Observer's specified target RA
dec_targ	0.0	Observer's specified target Dec
ra_nom	16.069779928661	Nominal RA
dec_nom	-72.012816313518	Nominal Dec
roll_nom	11.936825646185	Nominal Roll
revision	3	Processing version of data
ontime	4938.4636689648	Sum of GTIs [s]
livetime	4875.9298684026	Livetime [s]
ontime4	1769.6065466404	Sum of GTIs [s]
ontime5	5223.6290023699	Sum of GTIs [s]
ontime6	2027.8125732988	Sum of GTIs [s]
ontime7	4938.4636689648	Sum of GTIs [s]
ontime8	2009.4435071051	Sum of GTIs [s]
ontime9	2006.2024670988	Sum of GTIs [s]
l2events	1619291	Number of level 2 events

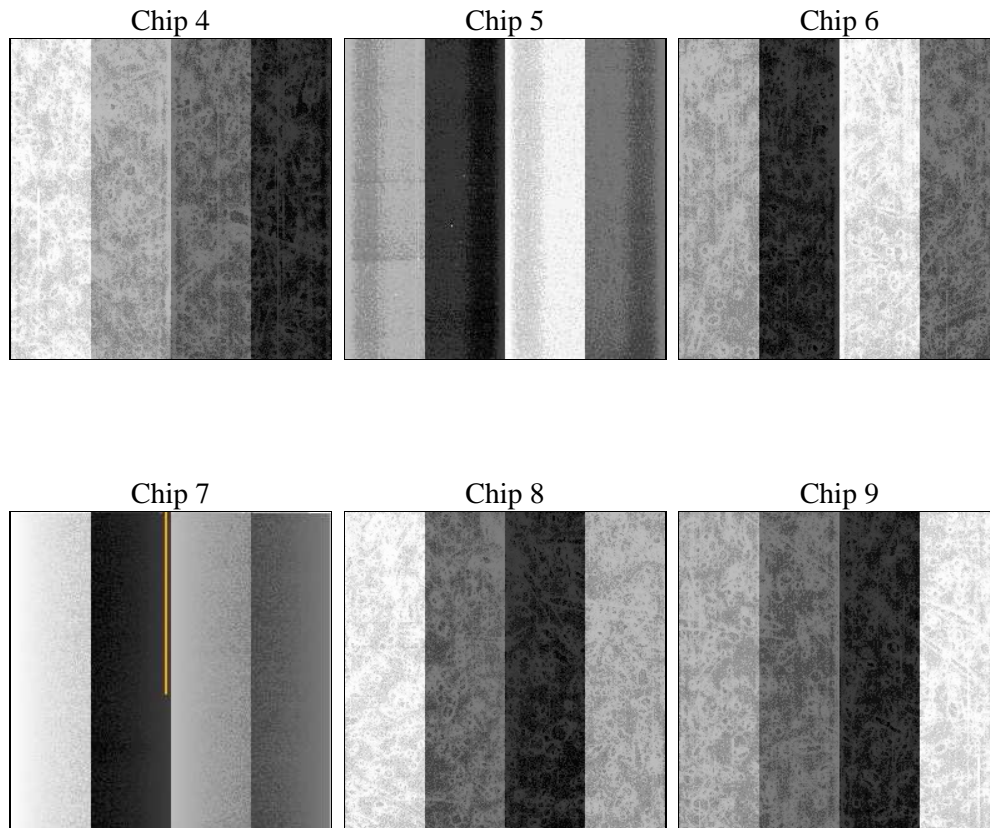
2 OBI

2.1 OBI

2.1.1 Images



2.1.2 Bias



2.1.3 Parameters

obi_num	0	Obi number		
ascdsver	8.3.2.1	ASCDS version number	sched_exp_time	0.0
caldsver	4.3.1	 		
date	2010-09-28T19:30:01	Date and time of file creation	ontime	4938.4636689648
revision	3	Processing version of data	ontime4	1769.6065466404
			ontime5	5223.6290023699
			ontime6	2027.8125732988
			ontime7	4938.4636689648
			ontime8	2009.4435071051
			ontime9	2006.2024670988
			l1events	1904177

2.1.4 Events

	ccd 4	ccd 5	ccd 6	ccd 7	ccd 8	ccd 9		ccd 4	ccd 5	ccd 6	ccd 7	ccd 8	ccd 9
level 1 events	183223	529007	221912	537463	222050	210522	grade 0 events	37243	53685	54470	89169	66712	56268
rejected events	31635	83318	32348	51566	32638	30052		20%	10%	24%	16%	30%	26%
rejected %	17%	15%	14%	9%	14%	14%	grade 1 events	158	732	245	228	260	216
								0%	0%	0%	0%	0%	0%
							grade 2 events	79243	173461	87075	135543	74744	78775
								43%	32%	39%	25%	33%	37%
							grade 3 events	3712	23848	5616	42149	7032	5791
								2%	4%	2%	7%	3%	2%
							grade 4 events	3686	21025	5553	38439	7138	6003
								2%	3%	2%	7%	3%	2%
							grade 5 events	1532	9036	1831	7750	2062	1920
								0%	1%	0%	1%	0%	0%
							grade 6 events	27704	173670	36850	180597	33786	33633
								15%	32%	16%	33%	15%	15%
							grade 7 events	29945	73550	30272	43588	30316	27916
								16%	13%	13%	8%	13%	13%

2.2 Compared Parameters

Parameter	Planned	Actual	Parameter	Planned	Actual
Instrument	ACIS	ACIS	Obspar format version number	6	6
Detector	ACIS-456789	ACIS-456789	Obspar file type	PREDICTED	ACTUAL
Grating	NONE	NONE	Obspar update status	NONE	UPDATED
Data mode	FAINT	FAINT	On-chip summing requested	N	N
Observation mode	SECONDARY	SECONDARY	Subarray requested	NONE	NONE
Pointing RA	0	16.06977992866052	Alternating exposures requested	N	N
Pointing Dec	0	-72.01281631351786	Primary exposure time	3.2	3.2
Pointing Roll	0.0	11.93682564618495			
SIM focus pos (mm)	-0.684267	-0.7809083437167272			
SIM defocus (mm)	0	0.7524282956875696			
SIM translation stage pos (mm)	-190.132523	250.4459185577885			
SIM translation stage offset (mm)	0	0.01005983576618519			
Observation start time	54930964.584853	54930963.81636			
Observation start date	1999-09-28T18:36:05	1999-09-28T18:36:03			
Observation end time	54945183.385364	54945182.616871			
Observation end date	1999-09-28T22:33:03	1999-09-28T22:33:02			
Read mode	TIMED	TIMED			

2.3 Star Slots

2.4 FID Slots

A Summary

A.1 Status

V&V Scientist	Joy Nichols
V&V Date (YYYY-MM-DD)	2010.10.01
V&V Edition	1
V&V Disposition and Status	OK
V&V Charge Time	4.9384636689648

A.2 Comments

CTI after safe mode. Fine attitude initialization during this obsid.
The focal plane temperature is approximately -110 C during this observation.