

# V&V Reference Report

## L2 ASCDS Version : 8.3.3.1

Observation 62317 - L2 Version 6  
Chandra X-Ray Center

L2 Processing Date : Dec 7 2010

## Contents

<b>1</b>	<b>Front</b>	<b>2</b>
<b>2</b>	<b>OBI</b>	<b>3</b>
2.1	OBI . . . . .	3
2.1.1	Images . . . . .	3
2.1.2	Bias . . . . .	3
2.1.3	Parameters . . . . .	4
2.1.4	Events . . . . .	4
2.2	Compared Parameters . . . . .	5
2.3	Star Slots . . . . .	6
2.4	FID Slots . . . . .	6
<b>A</b>	<b>Summary</b>	<b>7</b>
A.1	Status . . . . .	7
A.2	Comments . . . . .	7

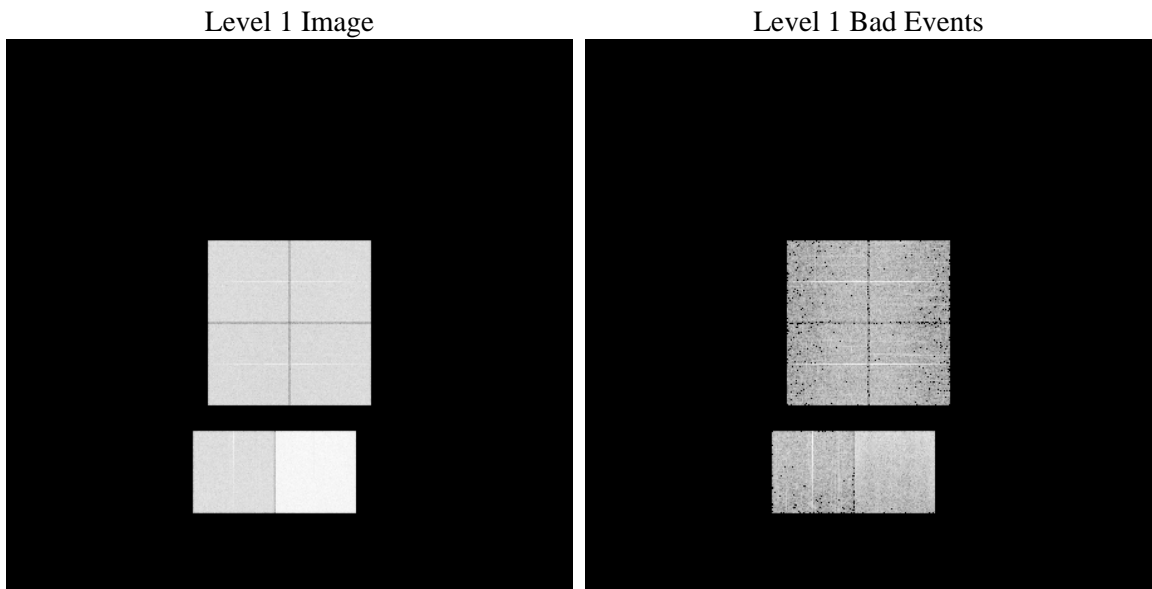
# 1 Front

seq_num	&#160	Sequence number
obs_id	62317	Observation id
title	ACIS-012367 diagnostics	Proposal title
observer	CHANDRA engineering request/realtime commanding	Principal investig
object	&#160	Source name
dtcycle	0	&#160
cycle	P	events from which exps? Prim/Second/Both
ra_targ	0.0	Observer's specified target RA
dec_targ	0.0	Observer's specified target Dec
ra_nom	270.32537243074	Nominal RA
dec_nom	84.994374718525	Nominal Dec
roll_nom	316.77240033589	Nominal Roll
revision	6	Processing version of data
ontime	4865.994154349	Sum of GTIs [s]
livetime	4804.3780064167	Livetime [s]
ontime0	1918.2939031795	Sum of GTIs [s]
ontime1	1957.2273633927	Sum of GTIs [s]
ontime2	1801.6985728741	Sum of GTIs [s]
ontime3	1863.1141430736	Sum of GTIs [s]
ontime6	2028.612353459	Sum of GTIs [s]
ontime7	4865.994154349	Sum of GTIs [s]
l2events	1307969	Number of level 2 events

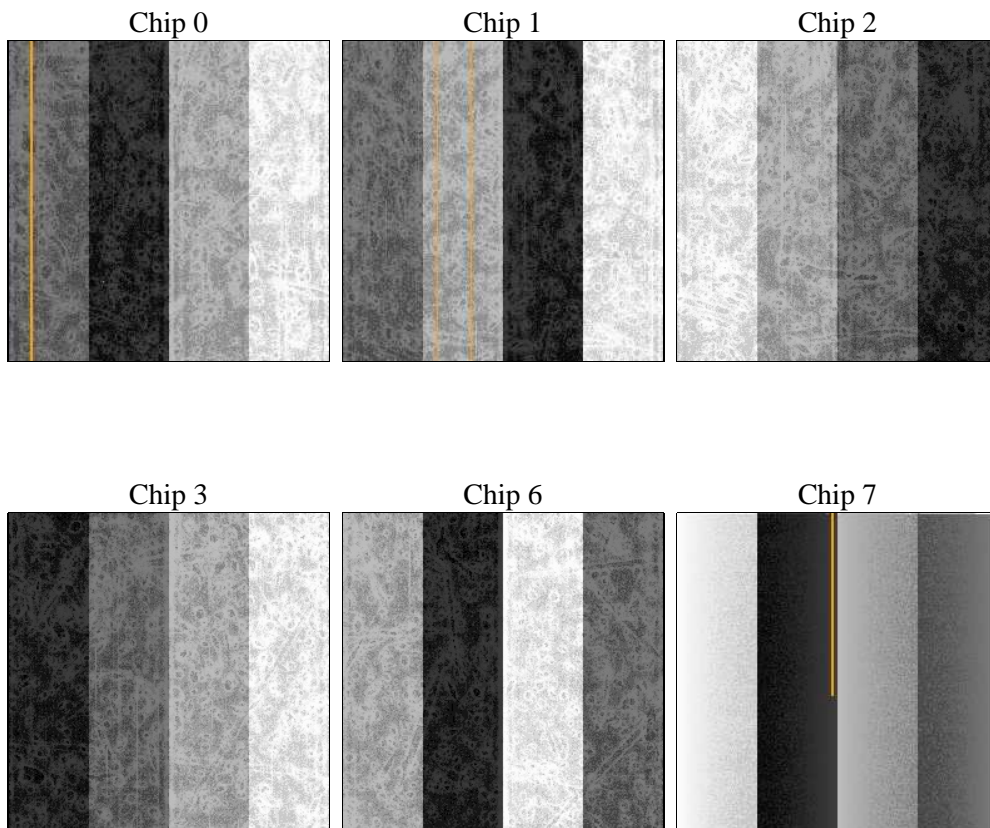
## 2 OBI

### 2.1 OBI

#### 2.1.1 Images



#### 2.1.2 Bias



### 2.1.3 Parameters

obi_num	0	Obi number	sched_exp_time	0.0	Scheduled observation exposure time
ascdsver	8.3.3.1	ASCDS version number	ontime	4865.994154349	Sum of GTIs [s]
caldsver	4.4.0	&#160	ontime0	1918.2939031795	Sum of GTIs [s]
date	2010-12-07T15:51:49	Date and time of file creation	ontime1	1957.2273633927	Sum of GTIs [s]
revision	4	Processing version of data	ontime2	1801.6985728741	Sum of GTIs [s]
			ontime3	1863.1141430736	Sum of GTIs [s]
			ontime6	2028.612353459	Sum of GTIs [s]
			ontime7	4865.994154349	Sum of GTIs [s]
			l1events	1509284	Number of level 1 events

### 2.1.4 Events

	ccd 0	ccd 1	ccd 2	ccd 3	ccd 6	ccd 7		ccd 0	ccd 1	ccd 2	ccd 3	ccd 6	ccd 7
level 1 events	195983	201121	187081	193295	216945	514859	grade 0 events	63700	65264	51607	55380	52626	87271
rejected events	25703	26708	27335	27467	32414	48129		32%	32%	27%	28%	24%	16%
rejected %	13%	13%	14%	14%	14%	9%	grade 1 events	264	240	214	253	258	234
								0%	0%	0%	0%	0%	0%
							grade 2 events	63083	64509	68713	69962	84813	129674
								32%	32%	36%	36%	39%	25%
							grade 3 events	6937	7035	5380	5774	5461	40666
								3%	3%	2%	2%	2%	7%
							grade 4 events	6832	6999	5381	5780	5402	37295
								3%	3%	2%	2%	2%	7%
							grade 5 events	1650	1623	1540	1649	1764	7145
								0%	0%	0%	0%	0%	1%
							grade 6 events	29728	30606	28665	28932	36229	171824
								15%	15%	15%	14%	16%	33%
							grade 7 events	23789	24845	25581	25565	30392	40750
								12%	12%	13%	13%	14%	7%

## 2.2 Compared Parameters

Parameter	Planned	Actual	Parameter	Planned	Actual
Instrument	ACIS	ACIS	Obspar format version number	6	6
Detector	ACIS-012367	ACIS-012367	Obspar file type	PREDICTED	ACTUAL
Grating	NONE	NONE	Obspar update status	NONE	UPDATED
Data mode	FAINT	FAINT	On-chip summing requested	N	N
Observation mode	SECONDARY	SECONDARY	Subarray requested	NONE	NONE
Pointing RA	0	270.3253724307384	Alternating exposures requested	N	N
Pointing Dec	0	84.99437471852463	Primary exposure time	3.2	3.2
Pointing Roll	0.0	316.772400335891			
SIM focus pos (mm)	-0.782348	-0.6828225247311905			
SIM defocus (mm)	0	0.8505141146731063			
SIM translation stage pos (mm)	-233.592463	250.466033080201			
SIM translation stage offset (mm)	0	-0.01005468664627074			
Observation start time	58699065.620647	58699064.852175			
Observation start date	1999-11-11T09:17:46	1999-11-11T09:17:44			
Observation end time	58748167.222418	58748166.453949			
Observation end date	1999-11-11T22:56:07	1999-11-11T22:56:06			
Read mode	TIMED	TIMED			

## 2.3 Star Slots

## 2.4 FID Slots

## A Summary

### A.1 Status

V&V Scientist	Beth Sundheim
V&V Date (YYYY-MM-DD)	2010.12.07
V&V Edition	1
V&V Disposition and Status	OK
V&V Charge Time	4.865994154349

### A.2 Comments