

# V&V Reference Report

## L2 ASCDS Version : 8.1.1

Observation 62316 - L2 Version 4  
Chandra X-Ray Center

L2 Processing Date : Nov 21 2009

## Contents

<b>1</b>	<b>Front</b>	<b>2</b>
<b>2</b>	<b>OBI</b>	<b>3</b>
2.1	OBI . . . . .	3
2.1.1	Images . . . . .	3
2.1.2	Bias . . . . .	3
2.1.3	Parameters . . . . .	4
2.1.4	Events . . . . .	4
2.2	Compared Parameters . . . . .	5
2.3	Star Slots . . . . .	6
2.4	FID Slots . . . . .	6
<b>A</b>	<b>Summary</b>	<b>7</b>
A.1	Status . . . . .	7
A.2	Comments . . . . .	7

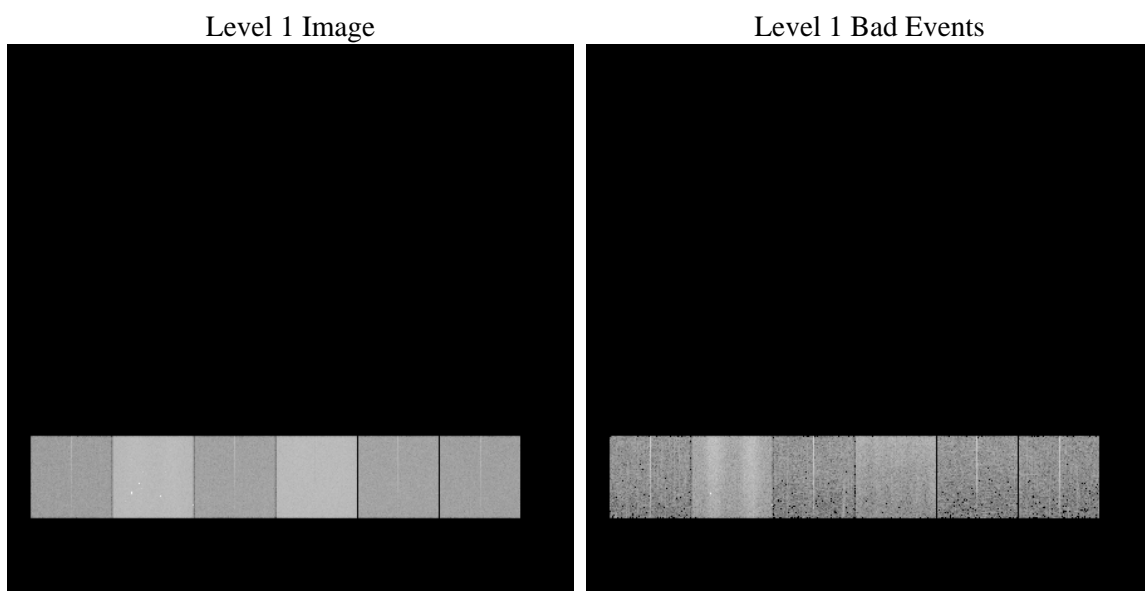
# 1 Front

seq_num	&#160	Sequence number
obs_id	62316	Observation id
title	ACIS-456789 diagnostics	Proposal title
observer	CHANDRA engineering request/realtime commanding	Principal investig
object	&#160	Source name
dtcycle	0	&#160
cycle	P	events from which exps? Prim/Second/Both
ra_targ	0.0	Observer's specified target RA
dec_targ	0.0	Observer's specified target Dec
ra_nom	270.43992381216	Nominal RA
dec_nom	84.994252761841	Nominal Dec
roll_nom	316.65739876721	Nominal Roll
revision	4	Processing version of data
ontime	3796.3069821298	Sum of GTIs [s]
livetime	3748.2358572605	Livetime [s]
ontime4	1427.856781438	Sum of GTIs [s]
ontime5	4065.3099415079	Sum of GTIs [s]
ontime6	1589.8677916229	Sum of GTIs [s]
ontime7	3796.3069821298	Sum of GTIs [s]
ontime8	1612.637151666	Sum of GTIs [s]
ontime9	1534.6469416469	Sum of GTIs [s]
l2events	1280645	Number of level 2 events

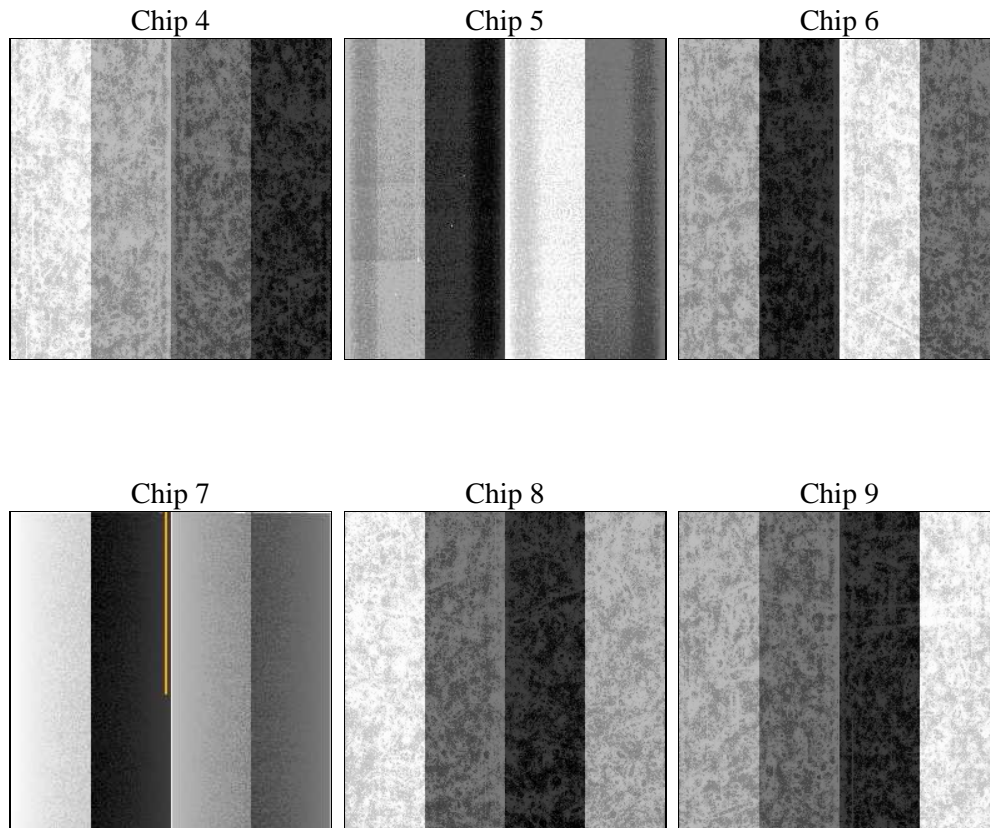
## 2 OBI

### 2.1 OBI

#### 2.1.1 Images



#### 2.1.2 Bias



### 2.1.3 Parameters

obi_num	0	Obi number		
ascdsver	8.1.1	ASCDS version number	sched_exp_time	0.0
caldsver	4.1.4	&#160		
date	2009-11-21T14:21:08	Date and time of file creation	ontime	3796.3069821298
revision	3	Processing version of data	ontime4	1427.856781438
			ontime5	4065.3099415079
			ontime6	1589.8677916229
			ontime7	3796.3069821298
			ontime8	1612.637151666
			ontime9	1534.6469416469
			l1events	1519907

### 2.1.4 Events

	ccd 4	ccd 5	ccd 6	ccd 7	ccd 8	ccd 9		ccd 4	ccd 5	ccd 6	ccd 7	ccd 8	ccd 9
level 1 events	153620	413182	179603	420408	184887	168207	grade 0 events	30087	38565	41349	66051	54773	43439
rejected events	27866	68805	28038	44204	27128	26062		19%	9%	23%	15%	29%	25%
rejected %	18%	16%	15%	10%	14%	15%	grade 1 events	143	173	209	152	270	205
								0%	0%	0%	0%	0%	0%
							grade 2 events	66353	132423	71422	106344	62474	62865
								43%	32%	39%	25%	33%	37%
							grade 3 events	3059	18028	4198	31704	5993	4472
								1%	4%	2%	7%	3%	2%
							grade 4 events	3035	15503	4315	28595	5921	4474
								1%	3%	2%	6%	3%	2%
							grade 5 events	1316	6907	1608	5821	1674	1506
								0%	1%	0%	1%	0%	0%
							grade 6 events	23487	140623	30567	144392	28926	27175
								15%	34%	17%	34%	15%	16%
							grade 7 events	26140	60960	25935	37349	24856	24071
								17%	14%	14%	8%	13%	14%

## 2.2 Compared Parameters

Parameter	Planned	Actual	Parameter	Planned	Actual
Instrument	ACIS	ACIS	Obspar format version number	6	6
Detector	ACIS-456789	ACIS-456789	Obspar file type	PREDICTED	ACTUAL
Grating	NONE	NONE	Obspar update status	NONE	UPDATED
Data mode	FAINT	FAINT	On-chip summing requested	N	N
Observation mode	SECONDARY	SECONDARY	Subarray requested	NONE	NONE
Pointing RA	0	270.4399238121586	Alternating exposures requested	N	N
Pointing Dec	0	84.99425276184114	Primary exposure time	0.000000	3.2
Pointing Roll	0.0	316.6573987672052			
SIM focus pos (mm)	-0.684267	-0.6828225247311905			
SIM defocus (mm)	0	0.8505141146731063			
SIM translation stage pos (mm)	-190.132523	250.466033080201			
SIM translation stage offset (mm)	0	-0.01005468664627074			
Observation start time	58748167.223	58748166.453949			
Observation start date	1999-11-11T22:56:07	1999-11-11T22:56:06			
Observation end time	58757966.223	58757965.454303			
Observation end date	1999-11-12T01:39:26	1999-11-12T01:39:25			
Read mode	TIMED	TIMED			

## 2.3 Star Slots

## 2.4 FID Slots

# A Summary

## A.1 Status

V&V Scientist	Beth Sundheim
V&V Date (YYYY-MM-DD)	2010.08.12
V&V Edition	1
V&V Disposition and Status	OK
V&V Charge Time	3.7963069821298

## A.2 Comments

This observation was acquired with the focal plane temperature raised from -120C to -110C, for attempted recalibration of ACIS for the 1999-09-16 through 2000-01-28 period. This reprocessing of the data applies no CTI correction because none is available for that temperature.