

V&V Reference Report

L2 ASCDS Version : 8.3.3.1

Observation 62309 - L2 Version 6
Chandra X-Ray Center

L2 Processing Date : Dec 13 2010

Contents

1	Front	2
2	OBI	3
2.1	OBI	3
2.1.1	Images	3
2.1.2	Bias	3
2.1.3	Parameters	4
2.1.4	Events	4
2.2	Compared Parameters	5
2.3	Star Slots	6
2.4	FID Slots	6
A	Summary	7
A.1	Status	7
A.2	Comments	7

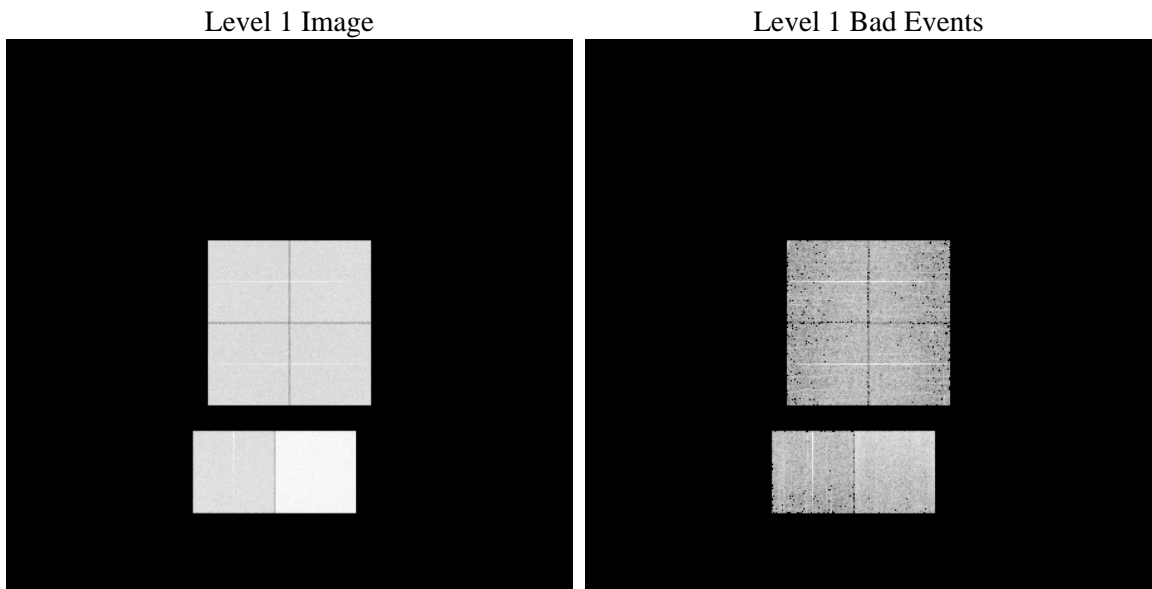
1 Front

seq_num	 	Sequence number
obs_id	62309	Observation id
title	ACIS-012367 diagnostics	Proposal title
observer	CHANDRA engineering request/realtime commanding	Principal investig
object	 	Source name
dtcycle	0	
cycle	P	events from which exps? Prim/Second/Both
ra_targ	0.0	Observer's specified target RA
dec_targ	0.0	Observer's specified target Dec
ra_nom	325.02556523764	Nominal RA
dec_nom	-30.018618555898	Nominal Dec
roll_nom	288.09641719254	Nominal Roll
revision	6	Processing version of data
ontime	4875.0207894072	Sum of GTIs [s]
livetime	4813.2903407866	Livetime [s]
ontime0	1925.1763971671	Sum of GTIs [s]
ontime1	1993.6790012568	Sum of GTIs [s]
ontime2	1847.3915168047	Sum of GTIs [s]
ontime3	1866.8377269059	Sum of GTIs [s]
ontime6	2103.4335975051	Sum of GTIs [s]
ontime7	4875.0207894072	Sum of GTIs [s]
l2events	1313055	Number of level 2 events

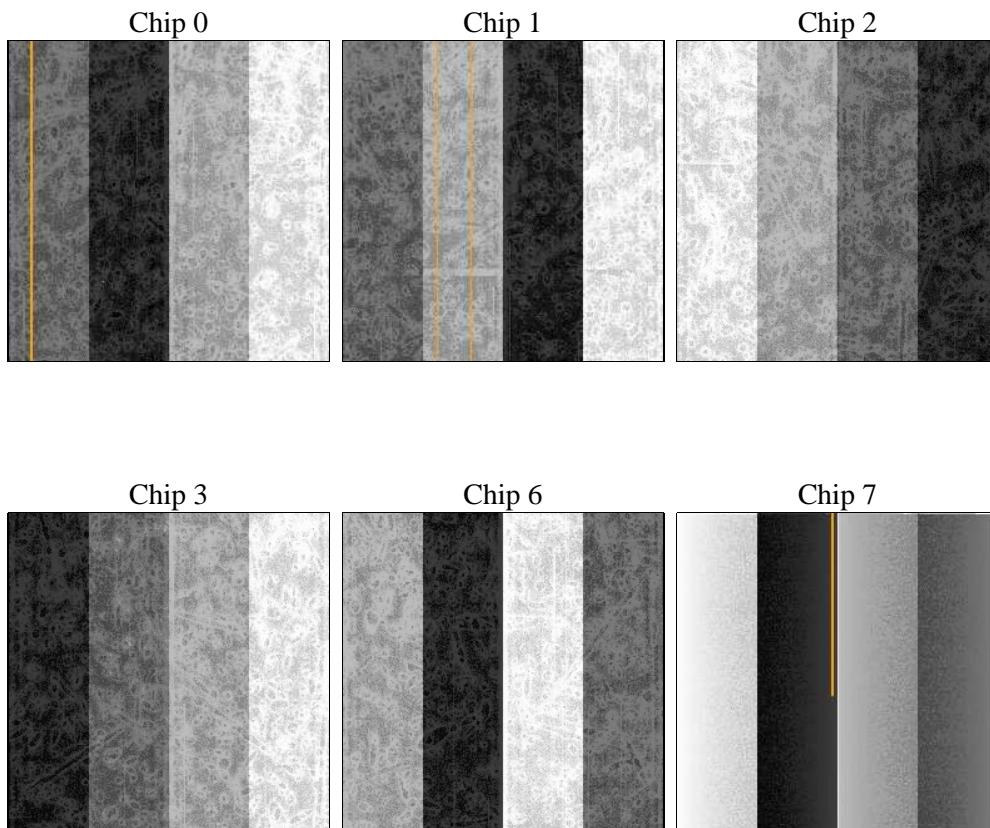
2 OBI

2.1 OBI

2.1.1 Images



2.1.2 Bias



2.1.3 Parameters

obi_num	0	Obi number	sched_exp_time	0.0	Scheduled observation exposure time
ascdsver	8.3.3.1	ASCDS version number	ontime	4875.0207894072	Sum of GTIs [s]
caldsver	4.4.0	 	ontime0	1925.1763971671	Sum of GTIs [s]
date	2010-12-13T16:49:14	Date and time of file creation	ontime1	1993.6790012568	Sum of GTIs [s]
revision	4	Processing version of data	ontime2	1847.3915168047	Sum of GTIs [s]
			ontime3	1866.8377269059	Sum of GTIs [s]
			ontime6	2103.4335975051	Sum of GTIs [s]
			ontime7	4875.0207894072	Sum of GTIs [s]
			l1events	1517688	Number of level 1 events

2.1.4 Events

	ccd 0	ccd 1	ccd 2	ccd 3	ccd 6	ccd 7		ccd 0	ccd 1	ccd 2	ccd 3	ccd 6	ccd 7
level 1 events	196800	203204	189773	193274	221874	512763	grade 0 events	62481	65110	50802	55042	53504	85582
rejected events	27115	26952	27621	27698	31145	50323		31%	32%	26%	28%	24%	16%
rejected %	13%	13%	14%	14%	14%	9%	grade 1 events	272	278	216	236	208	253
								0%	0%	0%	0%	0%	0%
							grade 2 events	64167	66478	71440	69582	88471	129675
								32%	32%	37%	36%	39%	25%
							grade 3 events	6683	7018	5366	5823	5547	39805
								3%	3%	2%	3%	2%	7%
							grade 4 events	6762	7209	5259	5808	5537	36444
								3%	3%	2%	3%	2%	7%
							grade 5 events	1728	1656	1620	1573	1838	7249
								0%	0%	0%	0%	0%	1%
							grade 6 events	29797	30982	29285	29321	37670	172134
								15%	15%	15%	15%	16%	33%
							grade 7 events	24910	24473	25785	25889	29099	41621
								12%	12%	13%	13%	13%	8%

2.2 Compared Parameters

Parameter	Planned	Actual	Parameter	Planned	Actual
Instrument	ACIS	ACIS	Obspar format version number	6	6
Detector	ACIS-012367	ACIS-012367	Obspar file type	PREDICTED	ACTUAL
Grating	NONE	NONE	Obspar update status	NONE	UPDATED
Data mode	FAINT	FAINT	On-chip summing requested	N	N
Observation mode	SECONDARY	SECONDARY	Subarray requested	NONE	NONE
Pointing RA	0	325.0255652376358	Alternating exposures requested	N	N
Pointing Dec	0	-30.01861855589779	Primary exposure time	3.2	3.2
Pointing Roll	0.0	288.0964171925394			
SIM focus pos (mm)	-0.782348	-0.6828225247311905			
SIM defocus (mm)	0	0.8505141146731063			
SIM translation stage pos (mm)	-233.592463	250.466033080201			
SIM translation stage offset (mm)	0	-0.01005468664627074			
Observation start time	59158864.237205	59158863.468787			
Observation start date	1999-11-16T17:01:04	1999-11-16T17:01:03			
Observation end time	59206770.688938	59206769.920518			
Observation end date	1999-11-17T06:19:31	1999-11-17T06:19:29			
Read mode	TIMED	TIMED			

2.3 Star Slots

2.4 FID Slots

A Summary

A.1 Status

V&V Scientist	Jen Lauer
V&V Date (YYYY-MM-DD)	2010.12.13
V&V Edition	1
V&V Disposition and Status	OK
V&V Charge Time	4.8750207894072

A.2 Comments

One CCD bias maps was incomplete because of data gaps in telemetry. The bias map for chip 1 was reconstructed using scaled data from a comparable bias map for another observation to fill the data gaps.