

V&V Reference Report

L2 ASCDS Version : 10.5.4

Observation 19874 - L2 Version 1
Chandra X-Ray Center

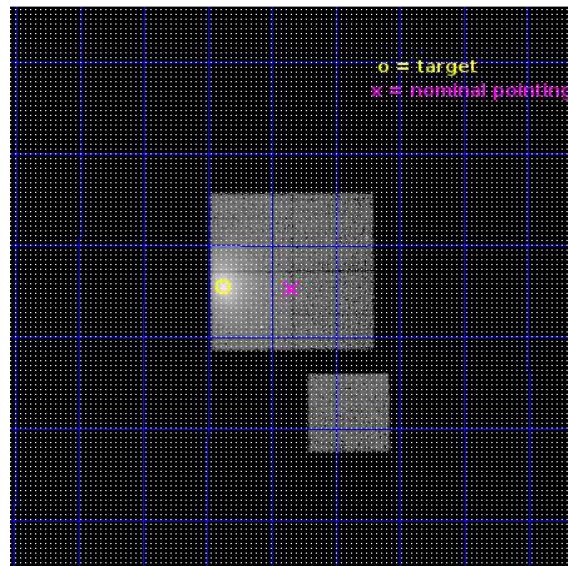
L2 Processing Date : Apr 19 2017

Contents

1	Front	2
2	OBI	3
2.1	OBI	3
2.1.1	Images	3
2.1.2	Bias	3
2.1.3	Parameters	4
2.1.4	Events	4
2.2	Compared Parameters	5
2.3	Aspect	6
2.4	Star Slots	9
2.4.1	Slot 3	9
2.4.2	Slot 4	10
2.4.3	Slot 5	11
2.4.4	Slot 6	12
2.4.5	Slot 7	13
2.5	FID Slots	14
2.5.1	Slot 0	14
2.5.2	Slot 1	15
2.5.3	Slot 2	16
A	Summary	17
A.1	Status	17
A.2	Comments	17

1 Front

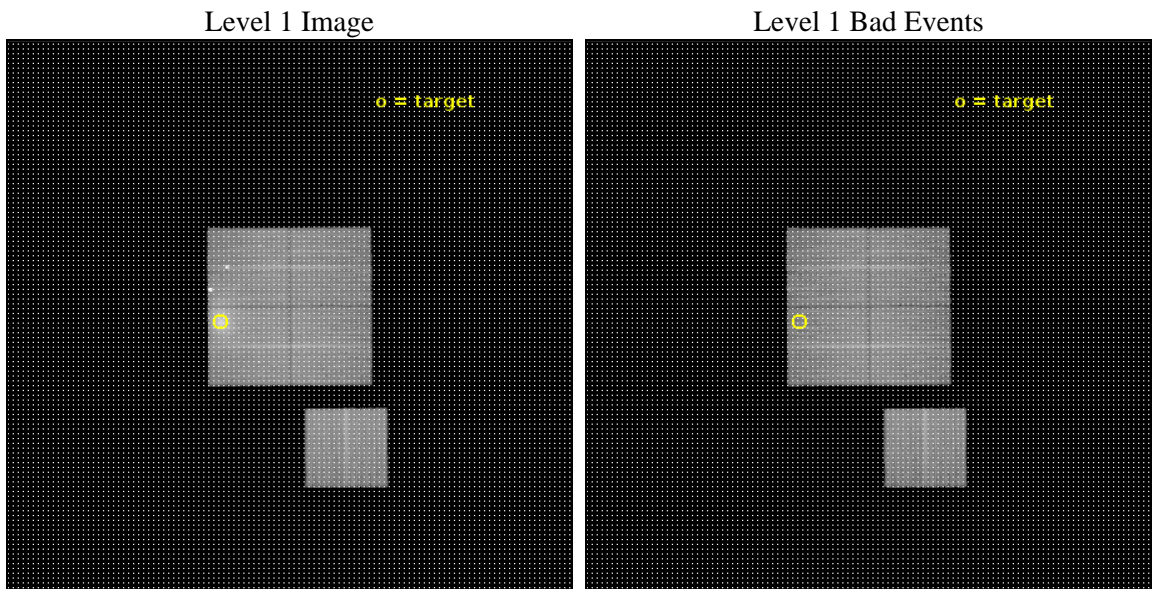
seq_num	890139	Sequence number
obs_id	19874	Observation id
title	AO-18 Calibration Observations of A1795	Proposal title
observer	CXC Calibration	Principal investigator
object	A1795	Source name
dtcycle	0	
cycle	P	events from which exps? Prim/Second/Both
ra_targ	207.219583	Observer's specified target RA [deg]
dec_targ	26.590833	Observer's specified target Dec [deg]
ra_nom	207.08649428626	Nominal RA [deg]
dec_nom	26.588006544163	Nominal Dec [deg]
roll_nom	179.64746999482	Nominal Roll [deg]
revision	1	Processing version of data
ontime	25060.400192857	Sum of GTIs [s]
livetime	24732.967615139	Livetime [s]
ontime0	25057.25912261	Sum of GTIs [s]
ontime1	25060.400192857	Sum of GTIs [s]
ontime2	25057.259132504	Sum of GTIs [s]
ontime3	25060.400192857	Sum of GTIs [s]
ontime6	25057.259142637	Sum of GTIs [s]
l2events	198569	Number of level 2 events



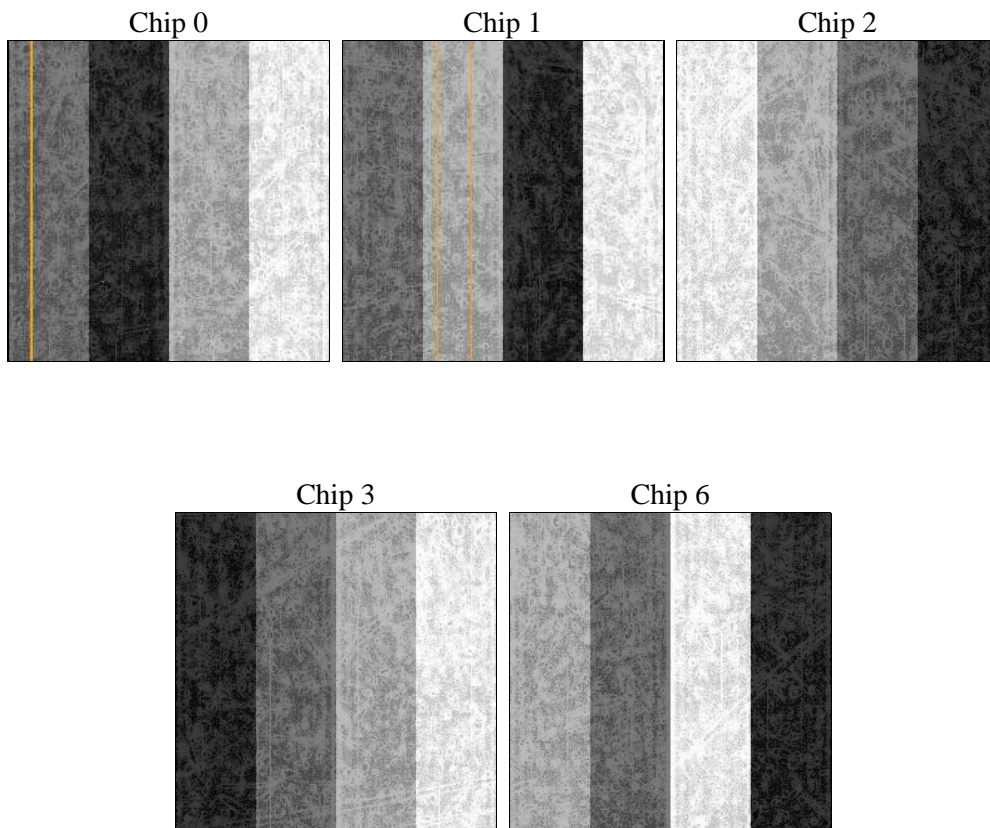
2 OBI

2.1 OBI

2.1.1 Images



2.1.2 Bias



2.1.3 Parameters

obi_num	0	Obi number	sched_exp_time	25000.000000	[s] Scheduled observation exposure time
ascdsver	10.5.4	Processing system revision	ontime	25060.400192857	Sum of GTIs [s]
caldbver	4.7.3	 	ontime0	25057.25912261	Sum of GTIs [s]
date	2017-04-19T17:51:31	Date and time of file creation	ontime1	25060.400192857	Sum of GTIs [s]
revision	1	Processing version of data	ontime2	25057.259132504	Sum of GTIs [s]
			ontime3	25060.400192857	Sum of GTIs [s]
			ontime6	25057.259142637	Sum of GTIs [s]
			l1events	1057690	Number of level 1 events

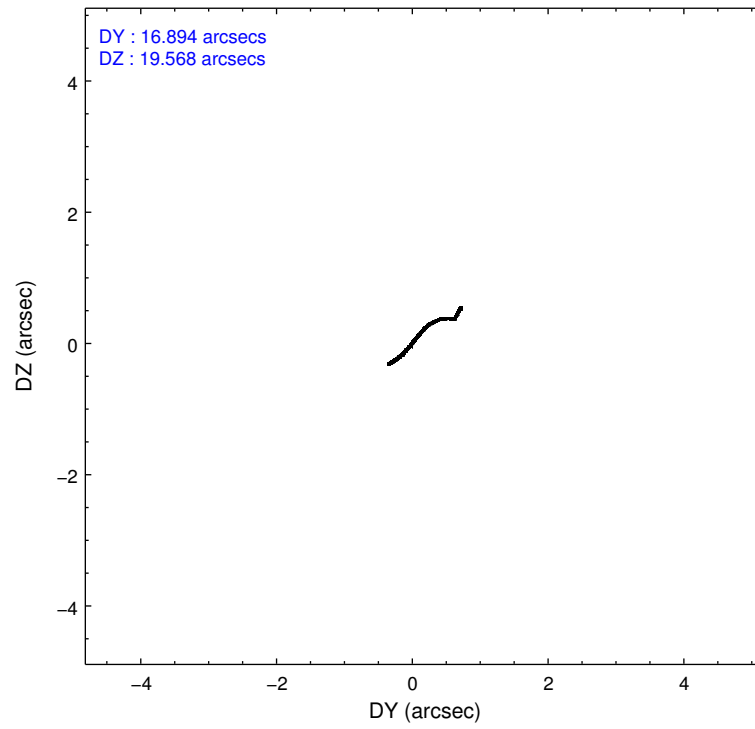
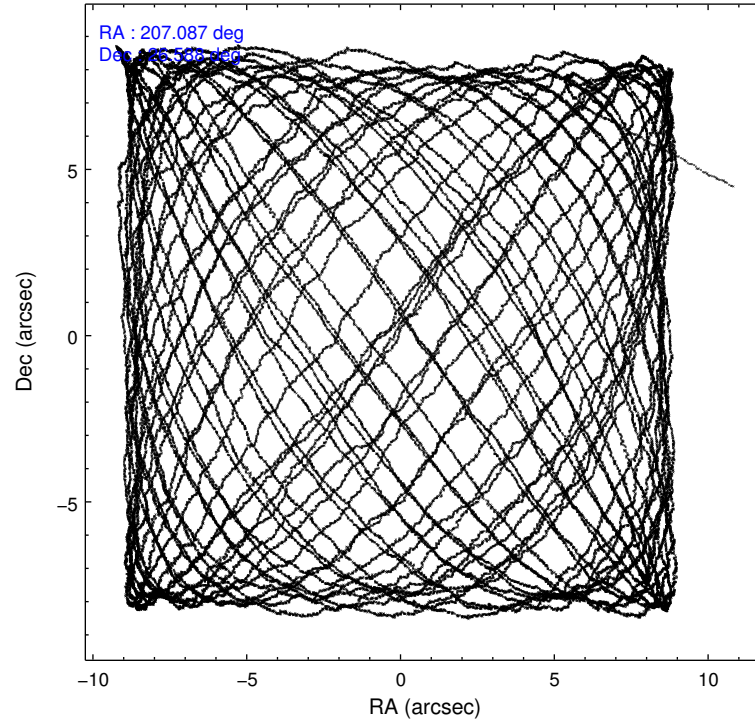
2.1.4 Events

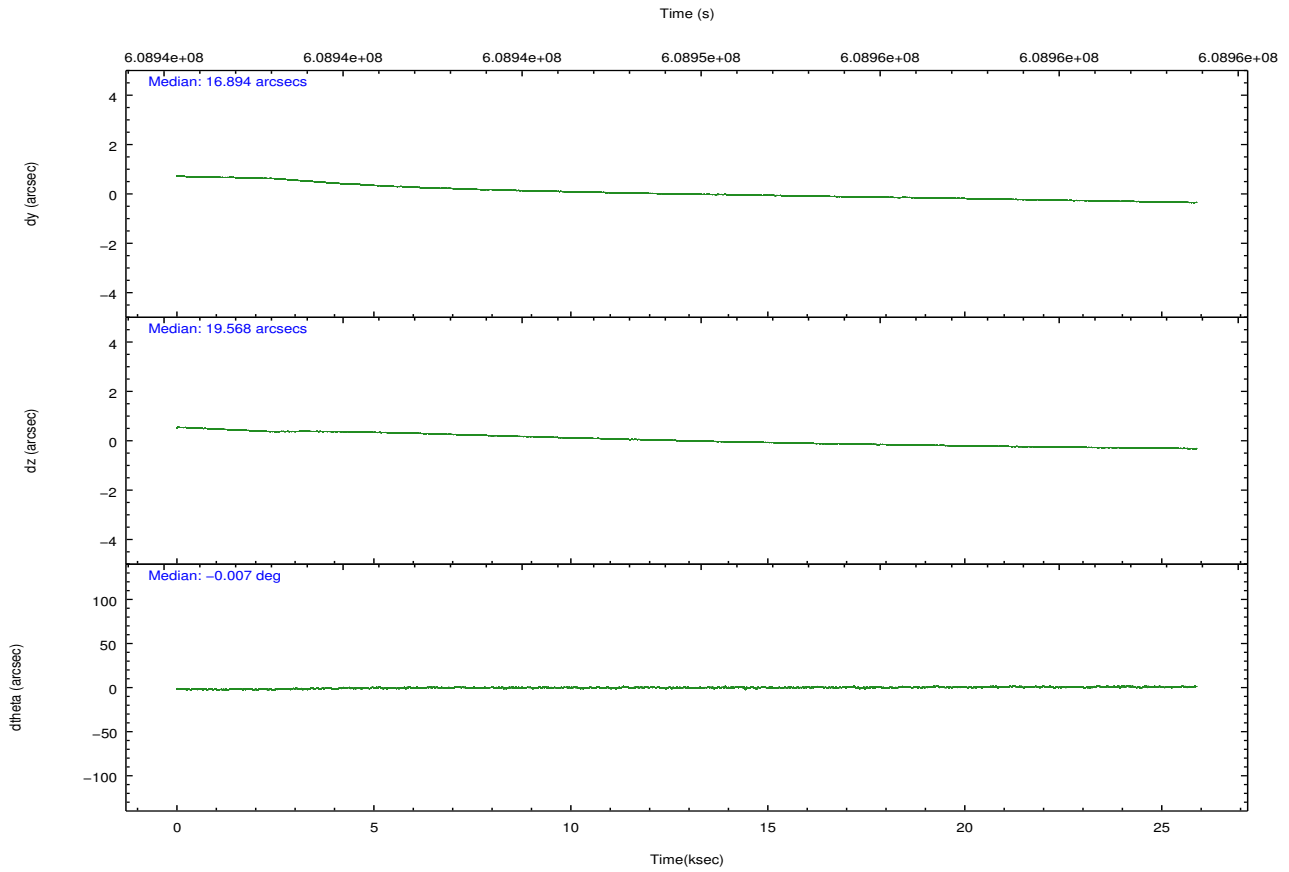
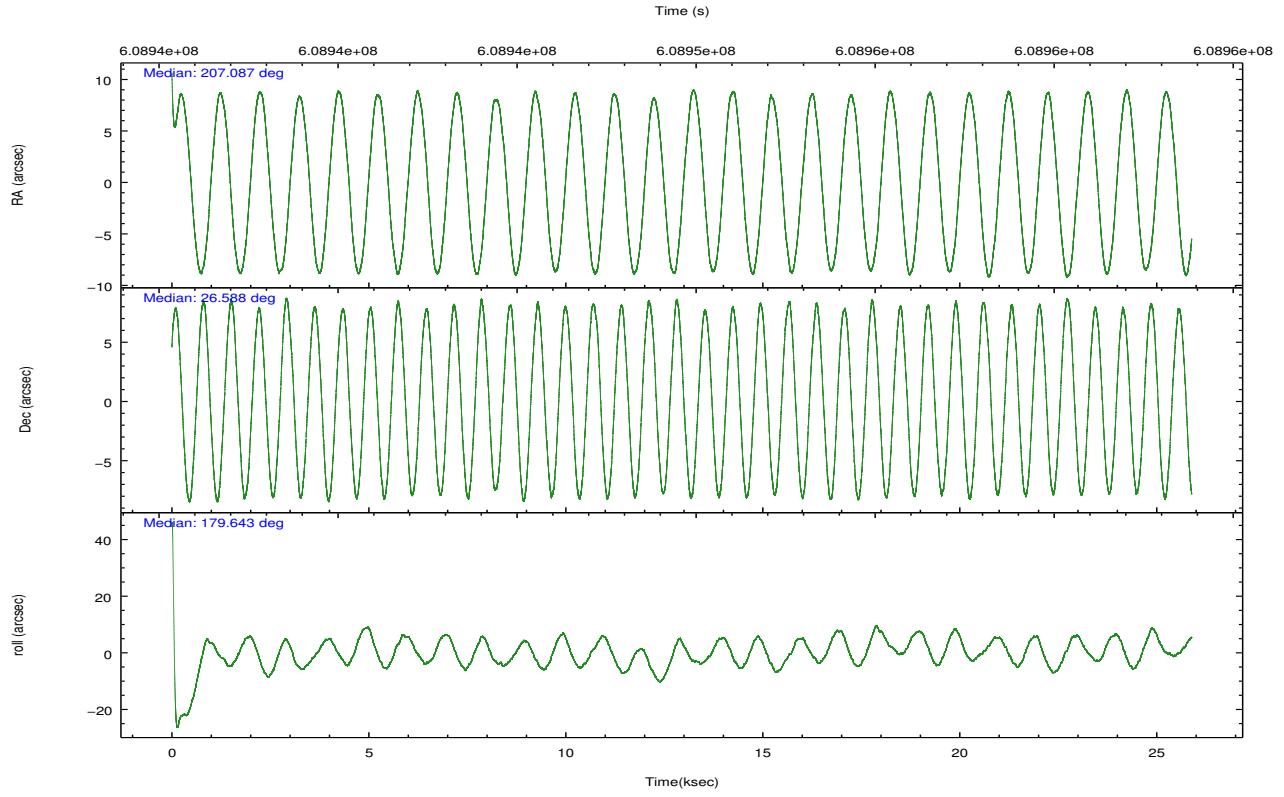
	ccd 0	ccd 1	ccd 2	ccd 3	ccd 6		ccd 0	ccd 1	ccd 2	ccd 3	ccd 6
level 1 events	170004	223719	194933	281388	187646	grade 0 events	7907	31373	8175	78864	6568
rejected events	148333	157546	173709	169973	167358		4%	14%	4%	28%	3%
rejected %	87%	70%	89%	60%	89%	grade 1 events	93	222	119	448	86
							0%	0%	0%	0%	0%
						grade 2 events	5336	23256	4888	14649	4768
							3%	10%	2%	5%	2%
						grade 3 events	2068	2871	1992	5317	2047
							1%	1%	1%	1%	1%
						grade 4 events	2028	2830	2163	5528	2153
							1%	1%	1%	1%	1%
						grade 5 events	8022	8552	7466	9343	8425
							4%	3%	3%	3%	4%
						grade 6 events	4334	5853	4010	7072	4757
							2%	2%	2%	2%	2%
						grade 7 events	140216	148762	166120	160167	158842
							82%	66%	85%	56%	84%

2.2 Compared Parameters

Parameter	Planned	Actual	Parameter	Planned	Actual
Instrument	ACIS	ACIS	Obspar format version number	7	7
Detector	ACIS-01236	ACIS-01236	Obspar file type	PREDICTED	ACTUAL
Grating	NONE	NONE	Obspar update status	NONE	UPDATED
Data mode	VFAINT	VFAINT	CCD I0 on	Y	Y
Observation mode	POINTING	POINTING	CCD I1 on	Y	Y
[deg] Pointing RA	207.113261	207.0864942862554	CCD I2 on	Y	Y
[deg] Pointing Dec	26.601744	26.58800654416325	CCD I3 on	Y	Y
[deg] Pointing Roll	179.426761	179.6474699948236	CCD S0 on	N	N
[s] Window start time (MET)	607392069.184000	607392069.184000	CCD S1 on	N	N
[s] Window stop time (MET)	609897669.184000	609897669.184000	CCD S2 on	O1	Y
[mm] SIM focus pos	-0.782348	-0.7809083437167272	CCD S3 on	N	N
[mm] SIM defocus	0	0.001439871863259334	CCD S4 on	N	N
[mm] SIM translation stage pos	-230.252463	-230.248423740357	CCD S5 on	N	N
[mm] SIM translation stage offset	-3.34	-3.34402926257269	Number of optional ACIS chips dropped	0	0
[s] Observation start time (MET)	608937548.184000	608935142.49114	On-chip summing requested	N	N
Observation start date	2017-04-18T21:17:59	2017-04-18T20:39:02	Subarray requested	NONE	NONE
[s] Observation end time (MET)	608962548.184000	608962702.18024	Alternating exposures requested	N	N
Observation end date	2017-04-19T04:14:39	2017-04-19T04:18:22	[s] Primary exposure time	0.000000	3.1
Read mode	TIMED	TIMED			

2.3 Aspect



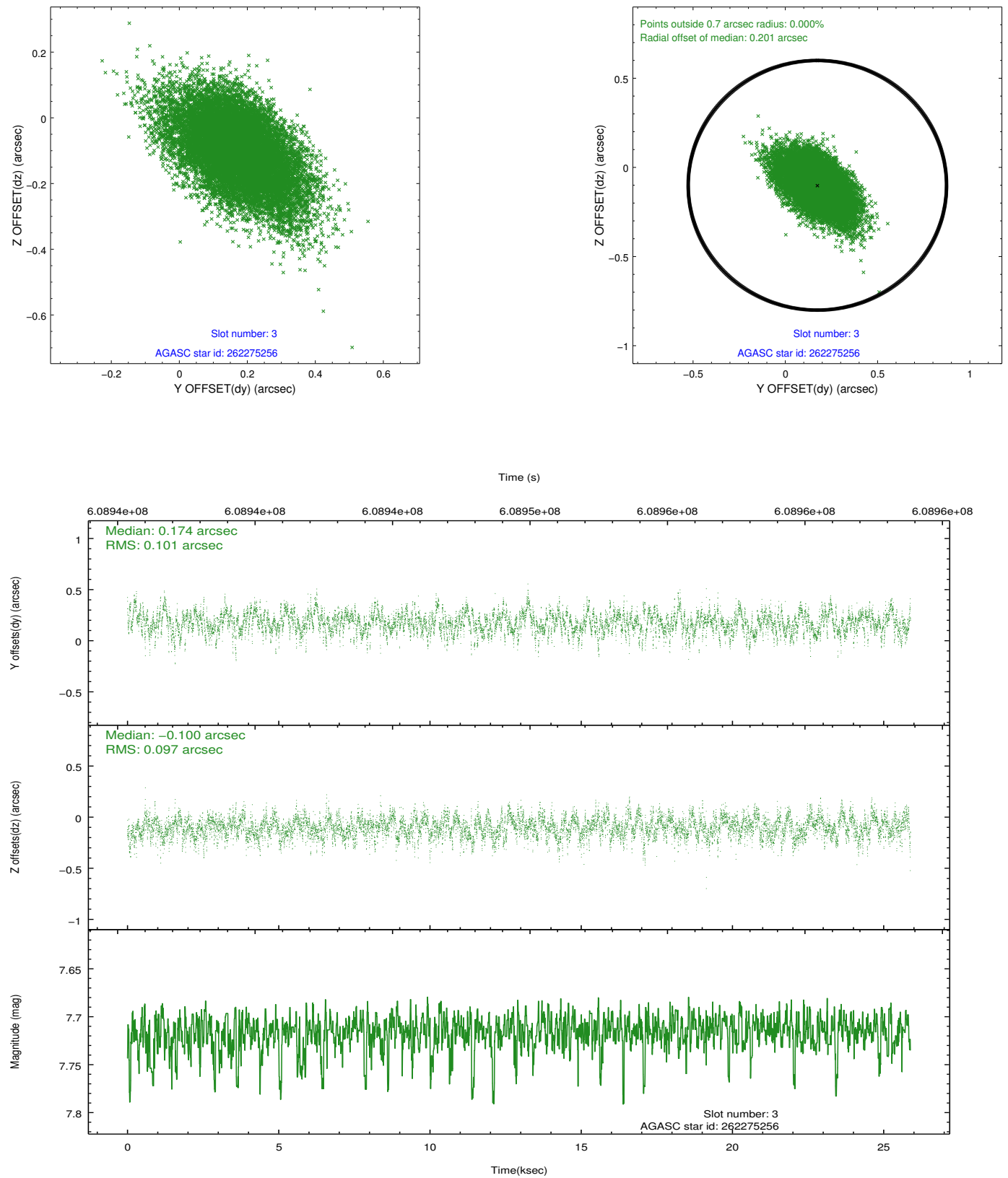


Slot Statistics

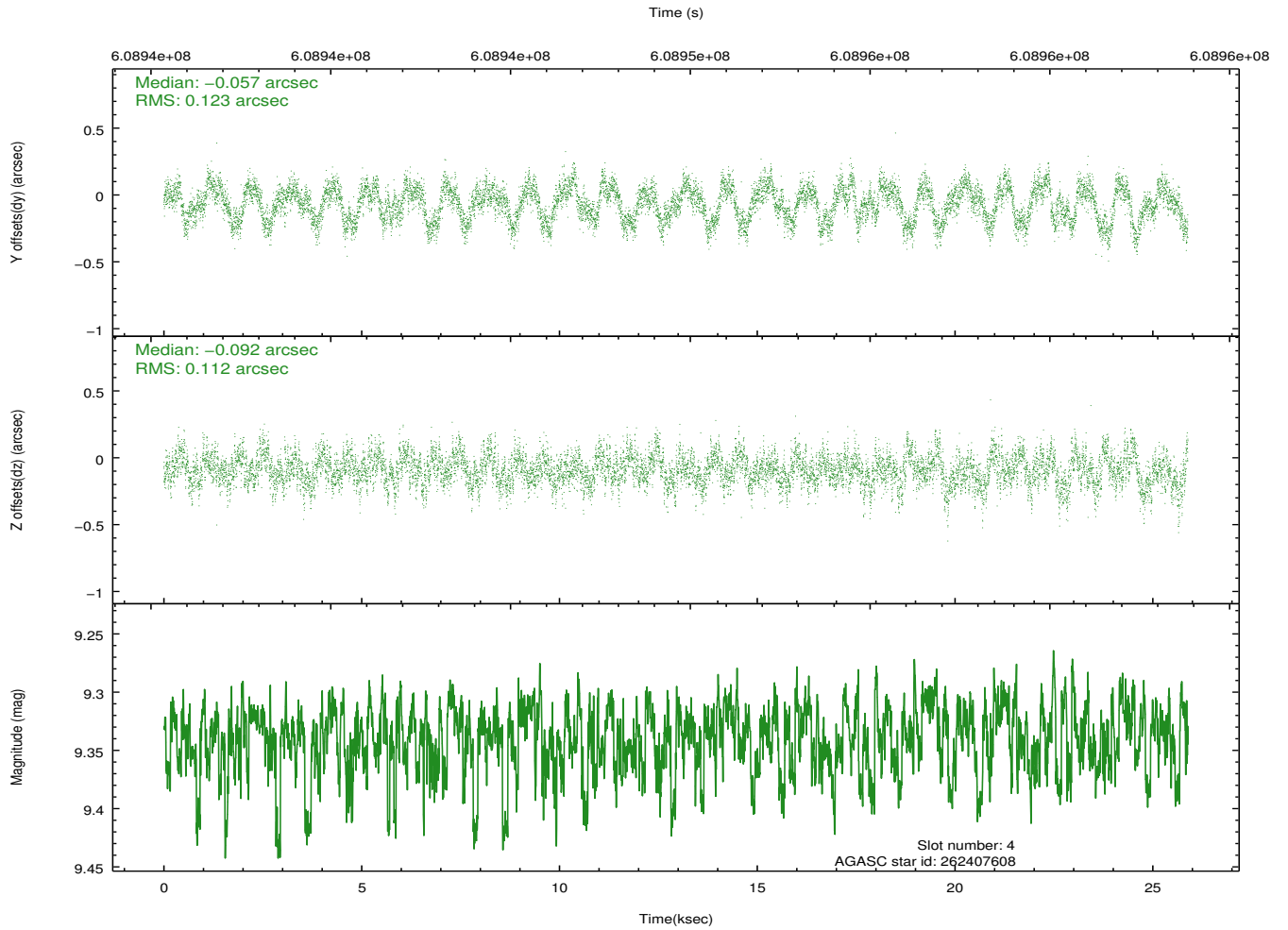
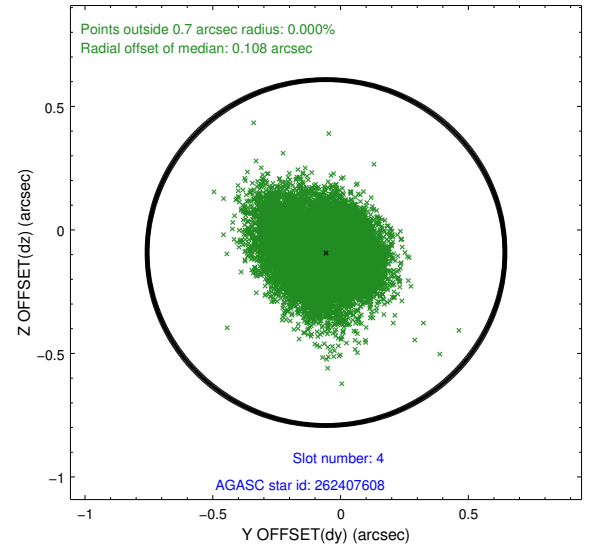
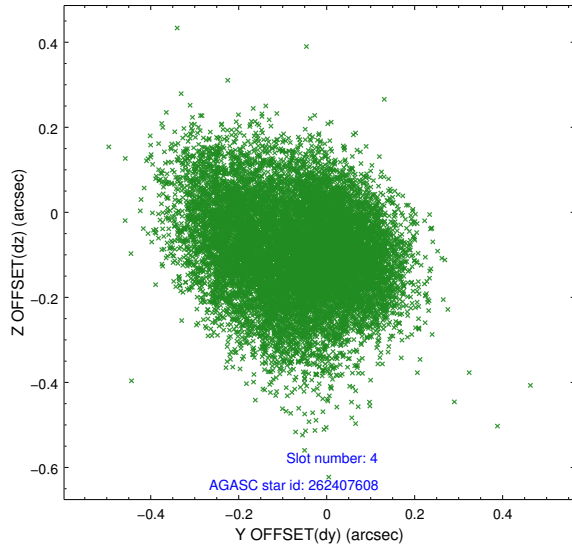
slot	status	used	id	mag	n_pts	med_dy	med_dz	dr1	dr2	ra	dec	mean_y	mean_z
0	FID		ACIS-I-1	7.12	6314	0.087	-0.059	0.009	0.016	0.000000	0.000000	922.55	-911.90
1	FID		ACIS-I-5	7.12	6313	-0.389	0.035	0.008	0.013	0.000000	0.000000	-1826.14	985.38
2	FID		ACIS-I-6	7.12	6314	0.210	0.094	0.010	0.021	0.000000	0.000000	387.88	1630.26
3	GUIDE	used	262275256	7.72	12622	0.174	-0.100	0.144	0.250	206.467522	27.226414	2090.56	-2233.01
4	GUIDE	used	262407608	9.34	12605	-0.057	-0.092	0.179	0.280	207.378401	26.435507	-860.24	589.06
5	GUIDE	used	262408096	9.30	12613	-0.212	-0.249	0.237	0.342	207.011678	26.515421	324.97	313.77
6	GUIDE	used	262408512	7.96	12626	0.041	0.327	0.111	0.192	207.800210	27.128796	-2181.10	-1924.84
7	GUIDE	used	262409552	8.15	12552	0.073	0.115	0.124	0.208	206.584269	27.192805	1716.03	-2113.69

2.4 Star Slots

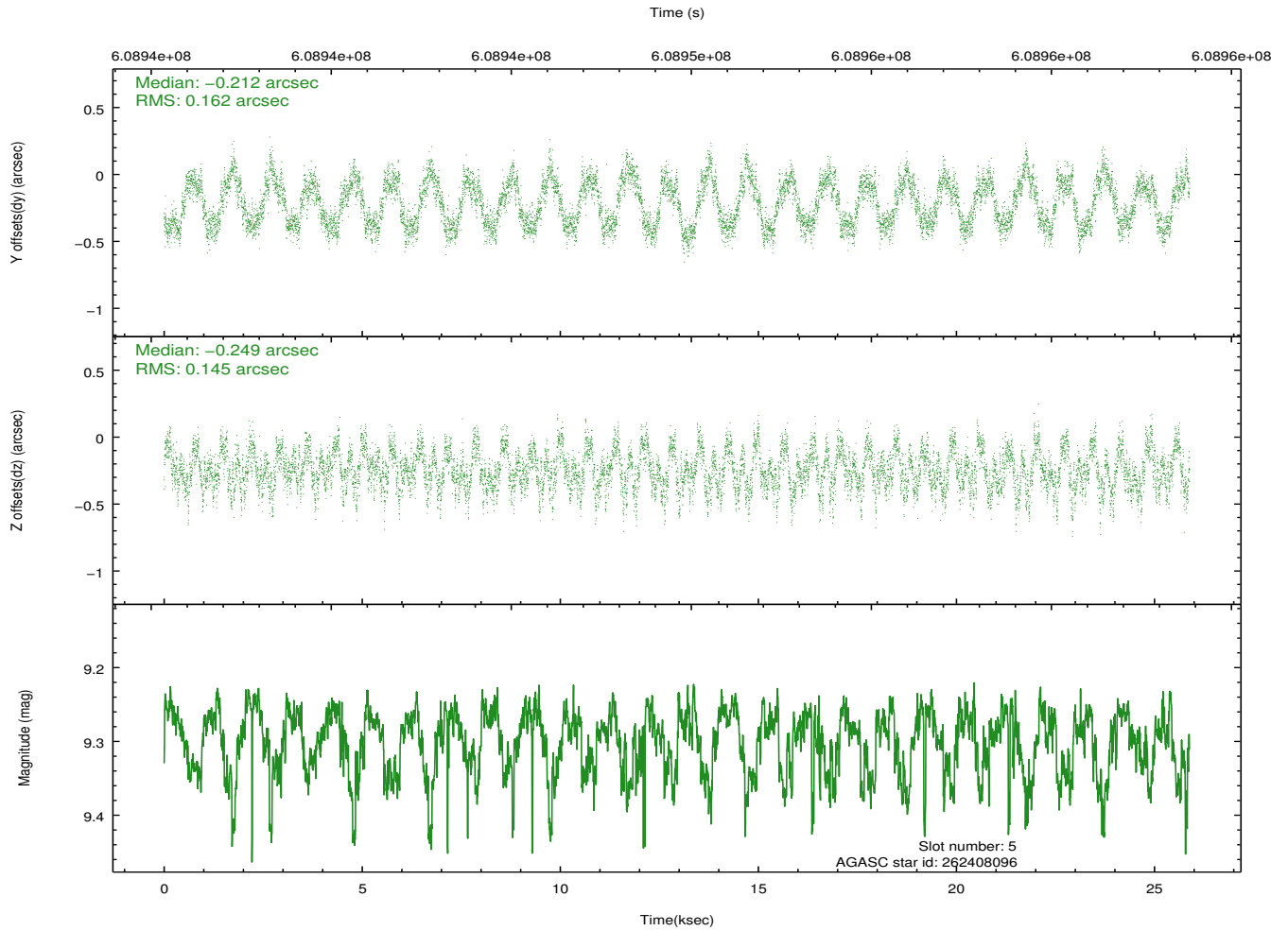
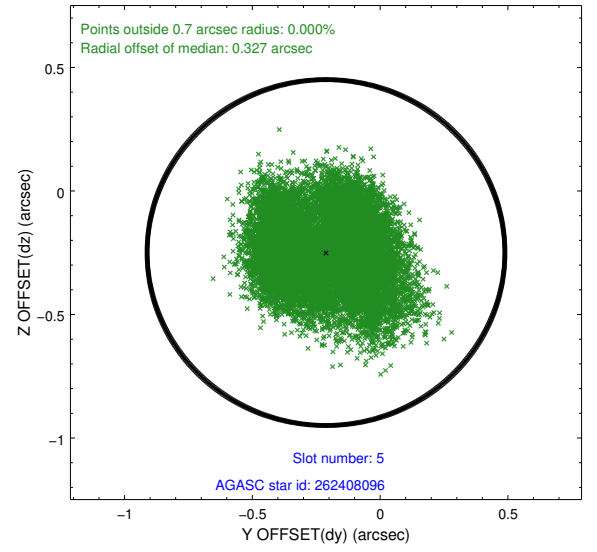
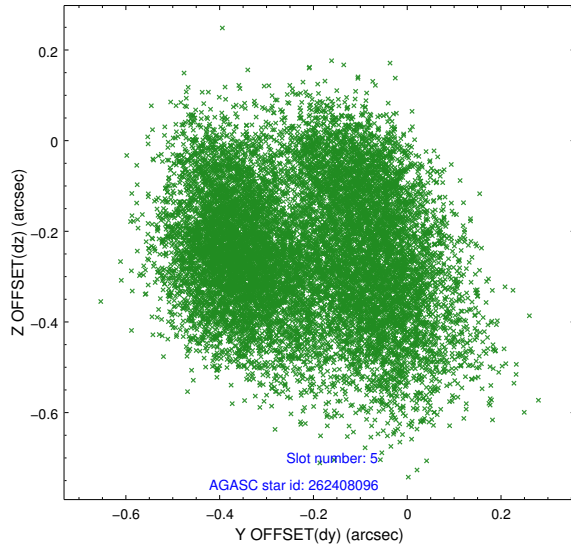
2.4.1 Slot 3



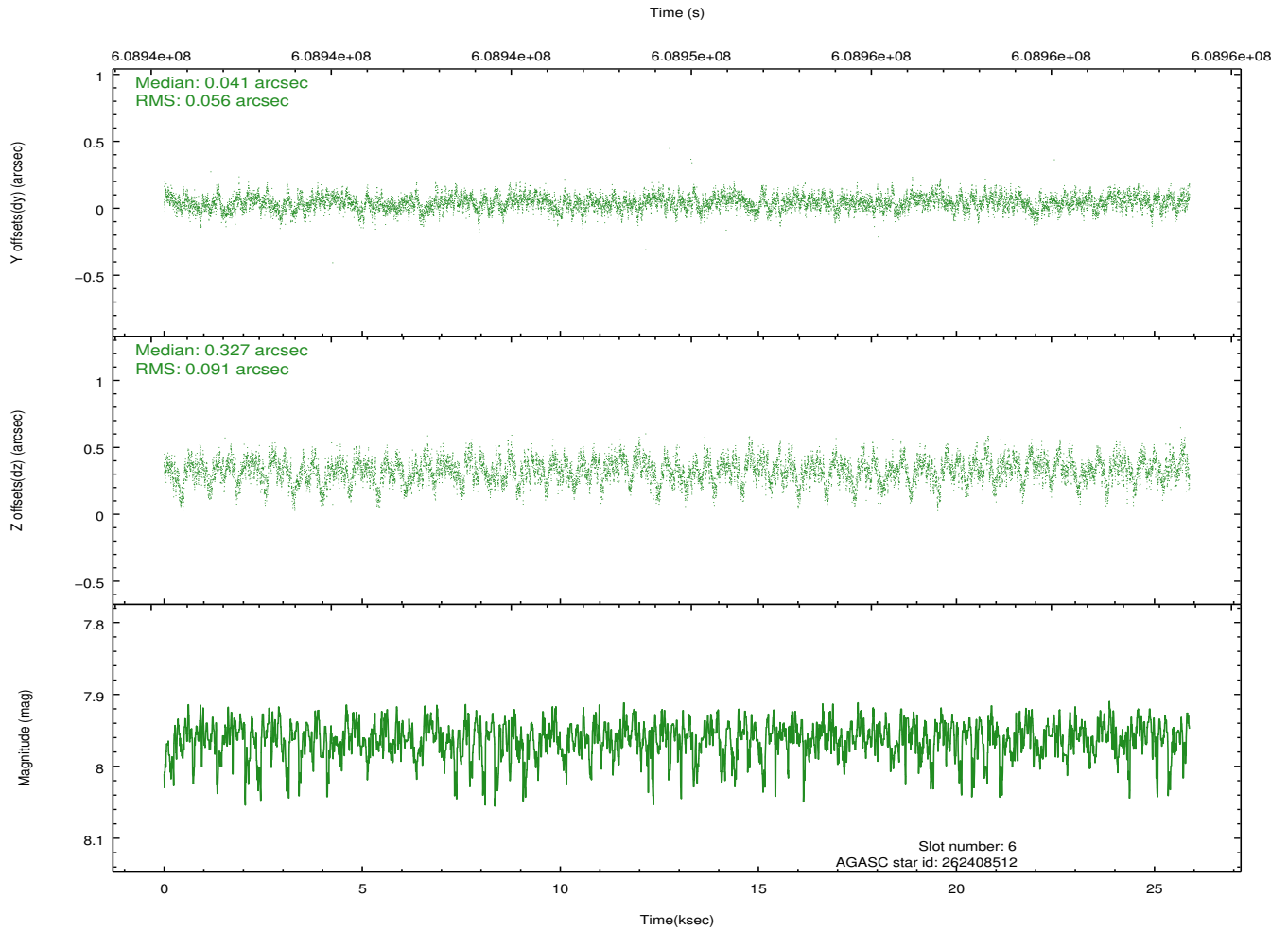
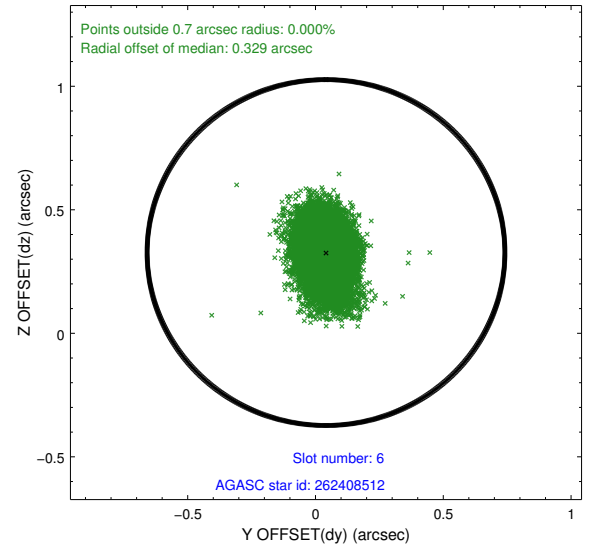
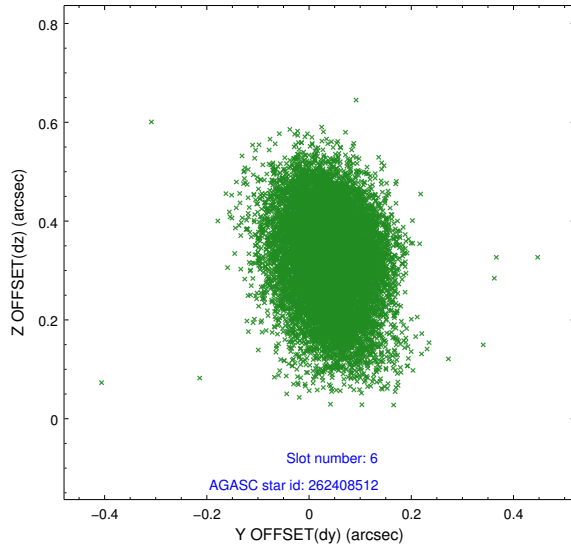
2.4.2 Slot 4



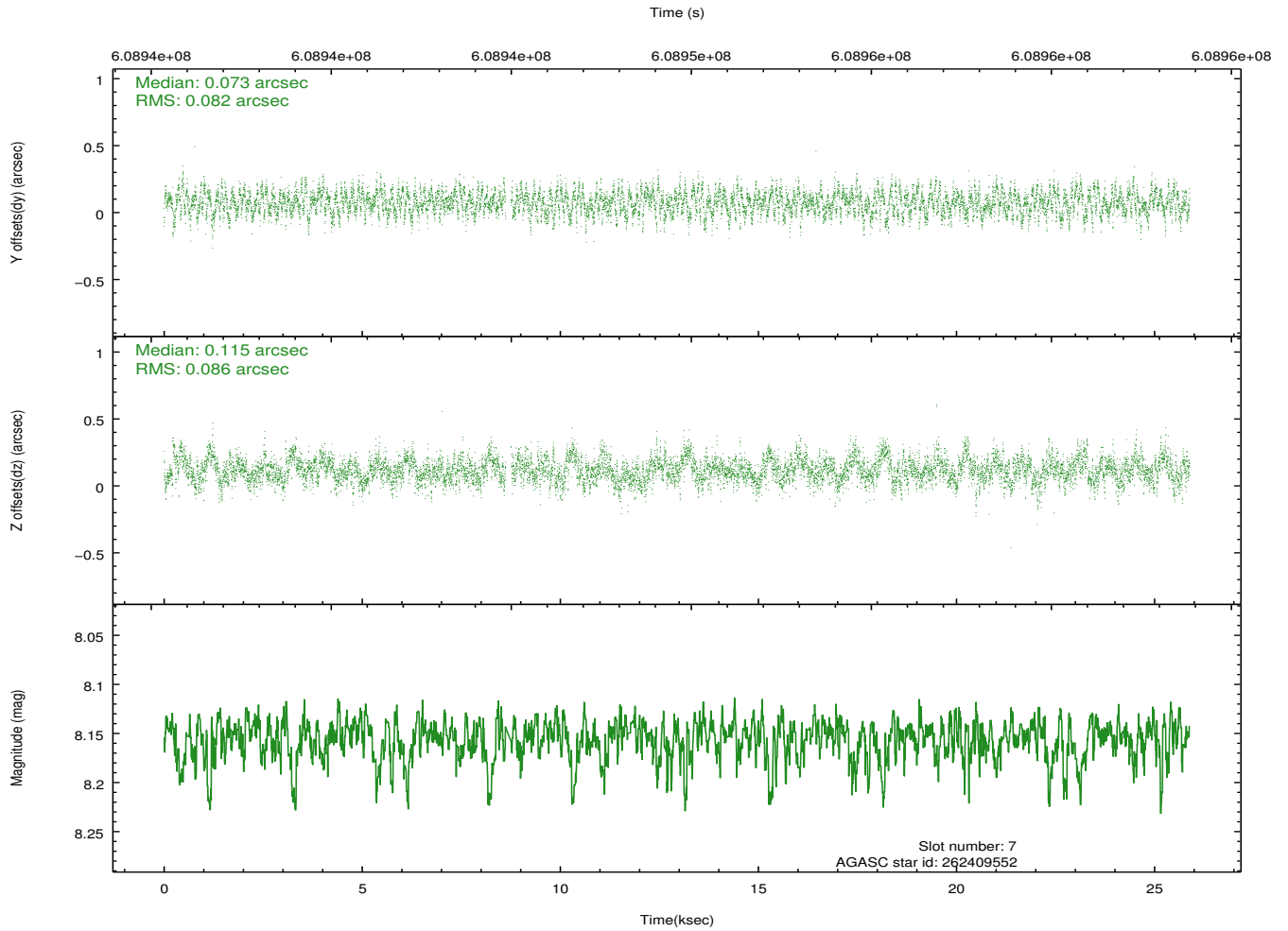
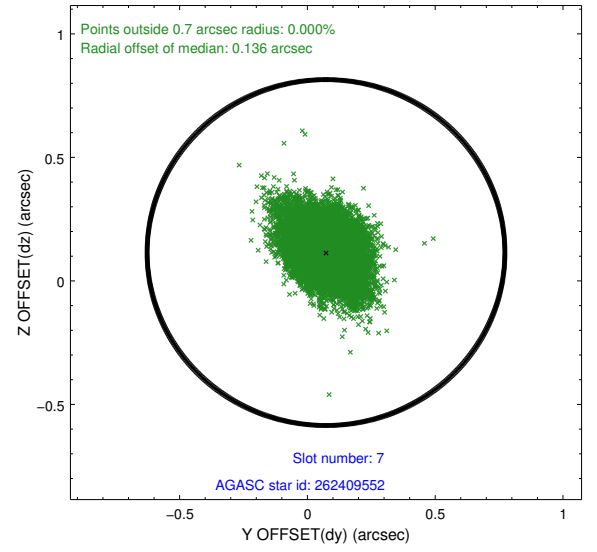
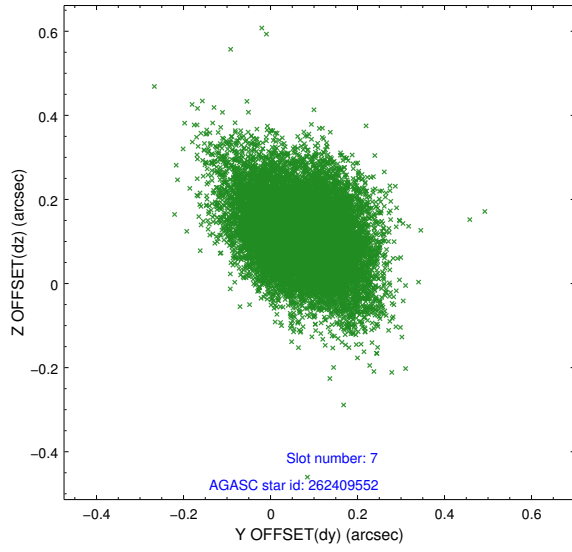
2.4.3 Slot 5



2.4.4 Slot 6

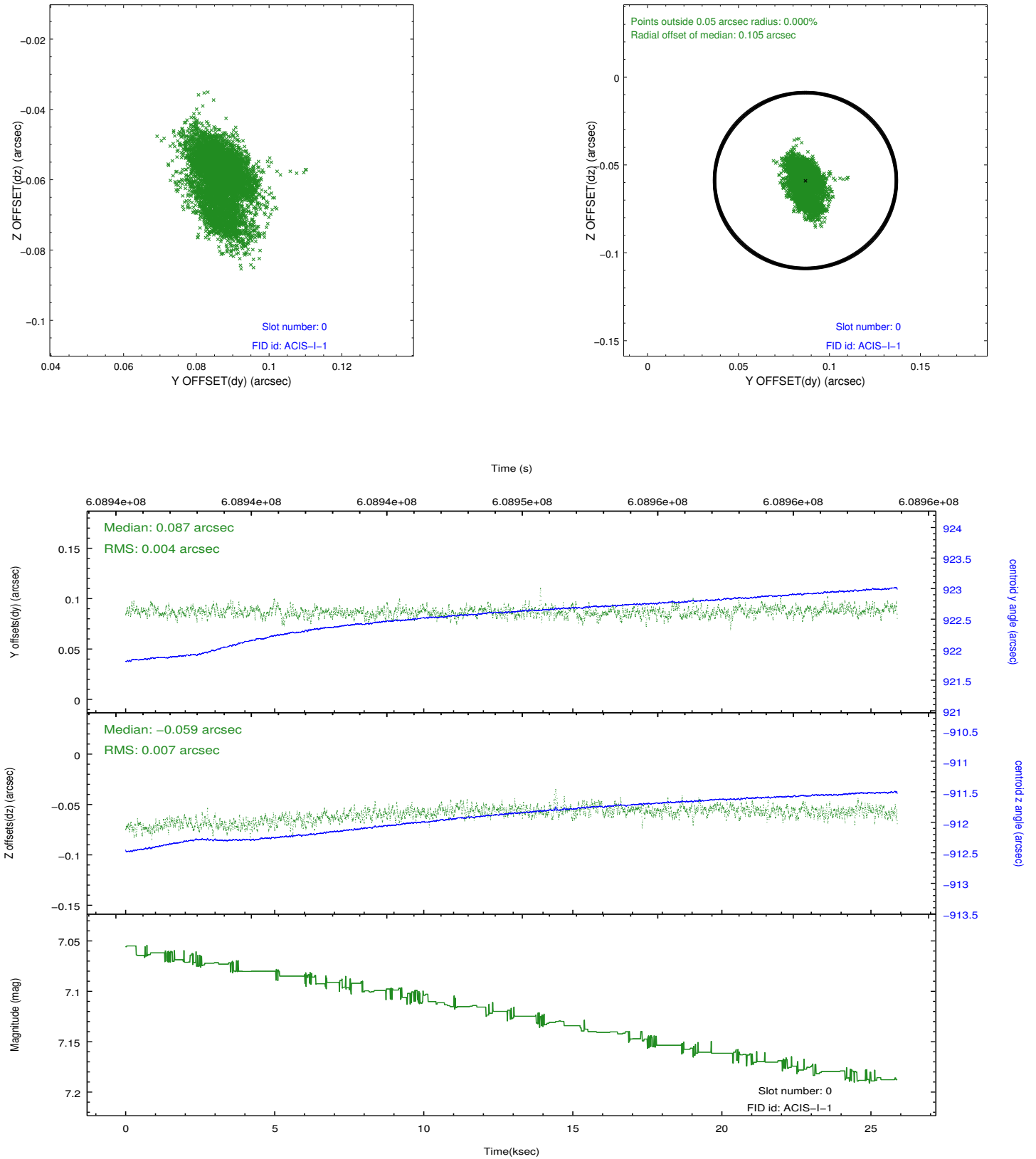


2.4.5 Slot 7

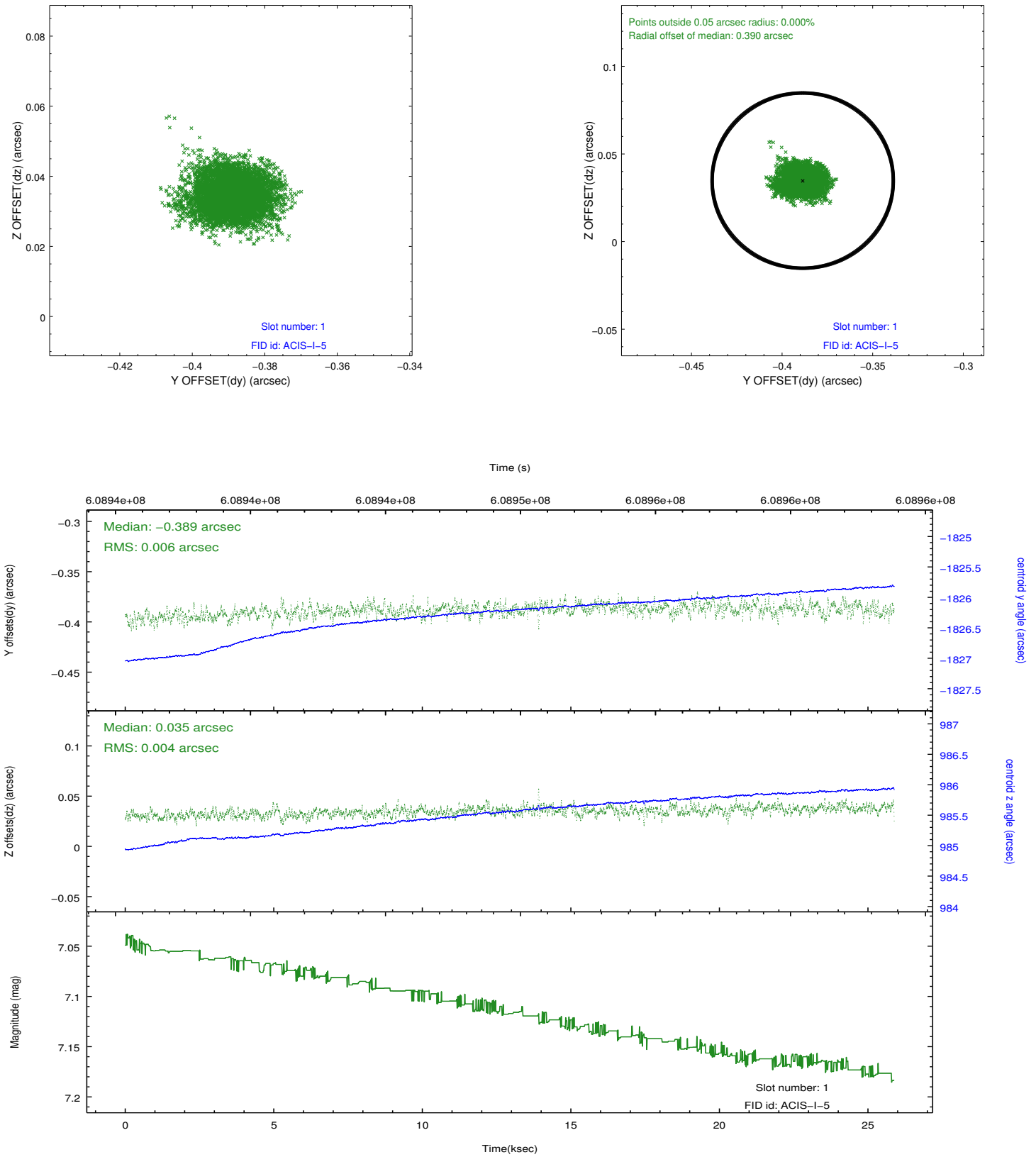


2.5 FID Slots

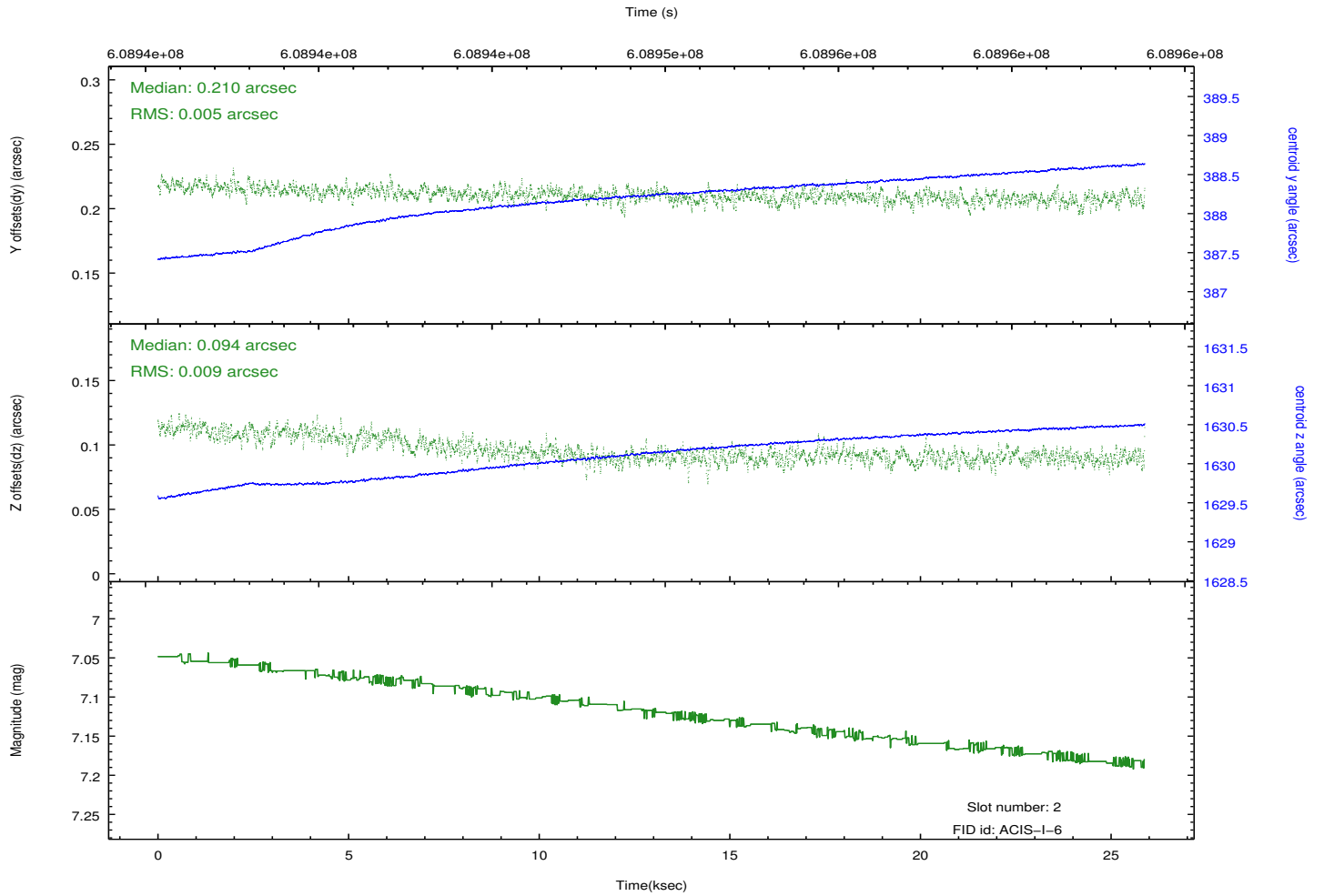
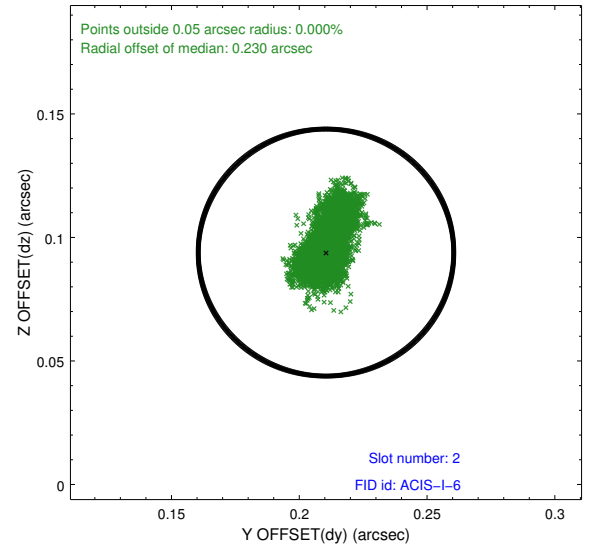
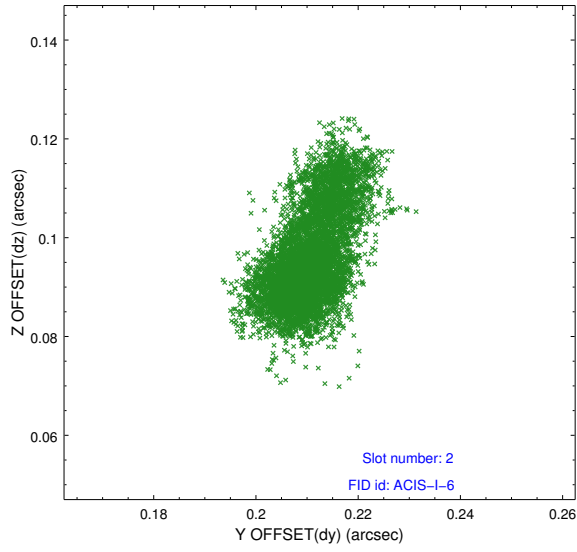
2.5.1 Slot 0



2.5.2 Slot 1



2.5.3 Slot 2



A Summary

A.1 Status

V&V Scientist	Beth Sundheim
V&V Date (YYYY-MM-DD)	2017.04.19
V&V Edition	1
V&V Disposition and Status	OK
V&V Charge Time	25.060400192857

A.2 Comments

Window preference met.