

V&V Reference Report

L2 ASCDS Version : 10.4.1

Observation 17685 - L2 Version 1
Chandra X-Ray Center

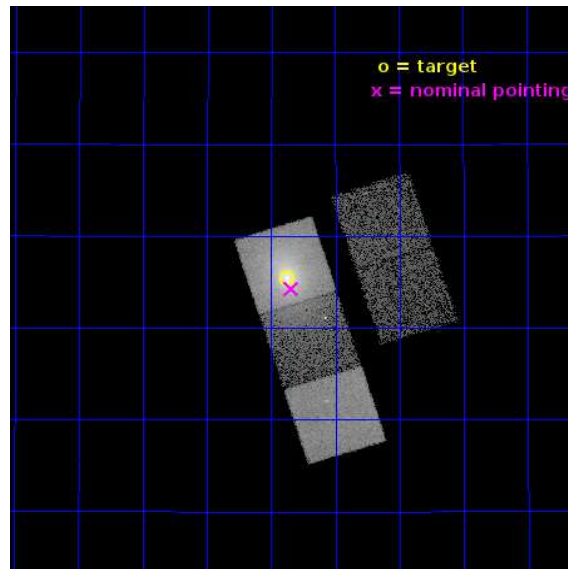
L2 Processing Date : Jul 20 2015

Contents

1	Front	2
2	OBI	3
2.1	OBI	3
2.1.1	Images	3
2.1.2	Bias	3
2.1.3	Parameters	4
2.1.4	Events	4
2.2	Compared Parameters	5
2.3	Aspect	6
2.4	Star Slots	9
2.4.1	Slot 3	9
2.4.2	Slot 4	10
2.4.3	Slot 5	11
2.4.4	Slot 6	12
2.4.5	Slot 7	13
2.5	FID Slots	14
2.5.1	Slot 0	14
2.5.2	Slot 1	15
2.5.3	Slot 2	16
A	Summary	17
A.1	Status	17
A.2	Comments	17

1 Front

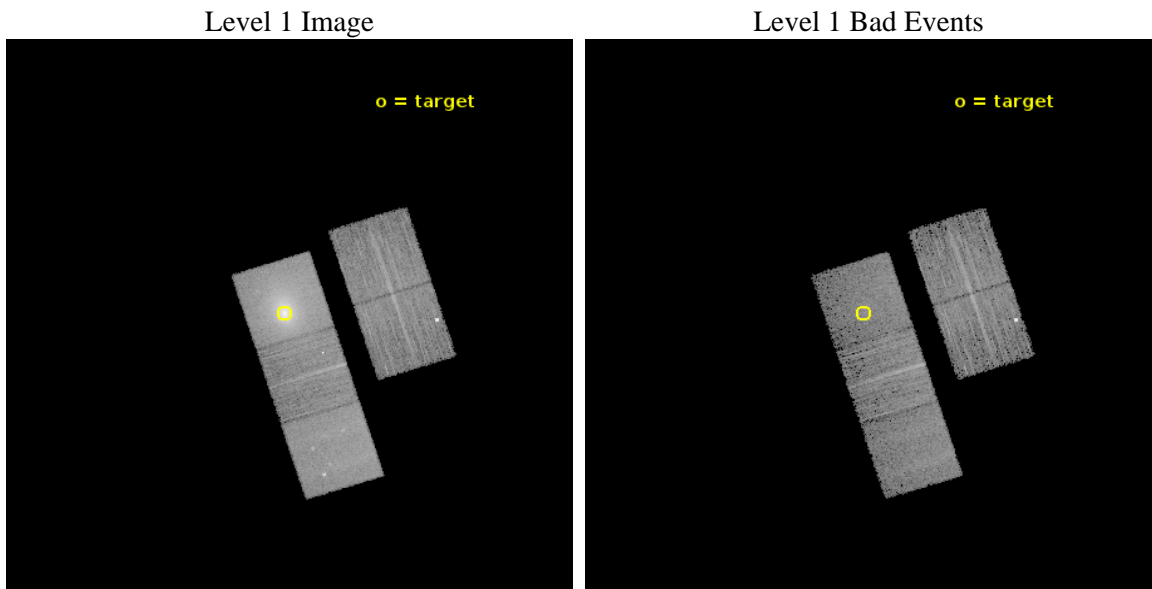
seq_num	890114	Sequence number
obs_id	17685	Observation id
title	Measuring the Spatial Distribution of the ACIS contaminant with Abell 1795	Proposal title
observer	Dr. CXC Calibration	Principal investigator
object	abell 1795	Source name
dtcycle	0	
cycle	P	events from which exps? Prim/Second/Both
ra_targ	207.219583	Observer's specified target RA [deg]
dec_targ	26.590833	Observer's specified target Dec [deg]
ra_nom	207.21074685189	Nominal RA [deg]
dec_nom	26.571426528994	Nominal Dec [deg]
roll_nom	252.2417109868	Nominal Roll [deg]
revision	1	Processing version of data
ontime	10033.259757042	Sum of GTIs [s]
livetime	9902.1678319378	Livetime [s]
ontime2	10033.095597029	Sum of GTIs [s]
ontime3	10033.136637092	Sum of GTIs [s]
ontime5	10033.218717098	Sum of GTIs [s]
ontime6	10033.177677035	Sum of GTIs [s]
ontime7	10033.259757042	Sum of GTIs [s]
l2events	173472	Number of level 2 events



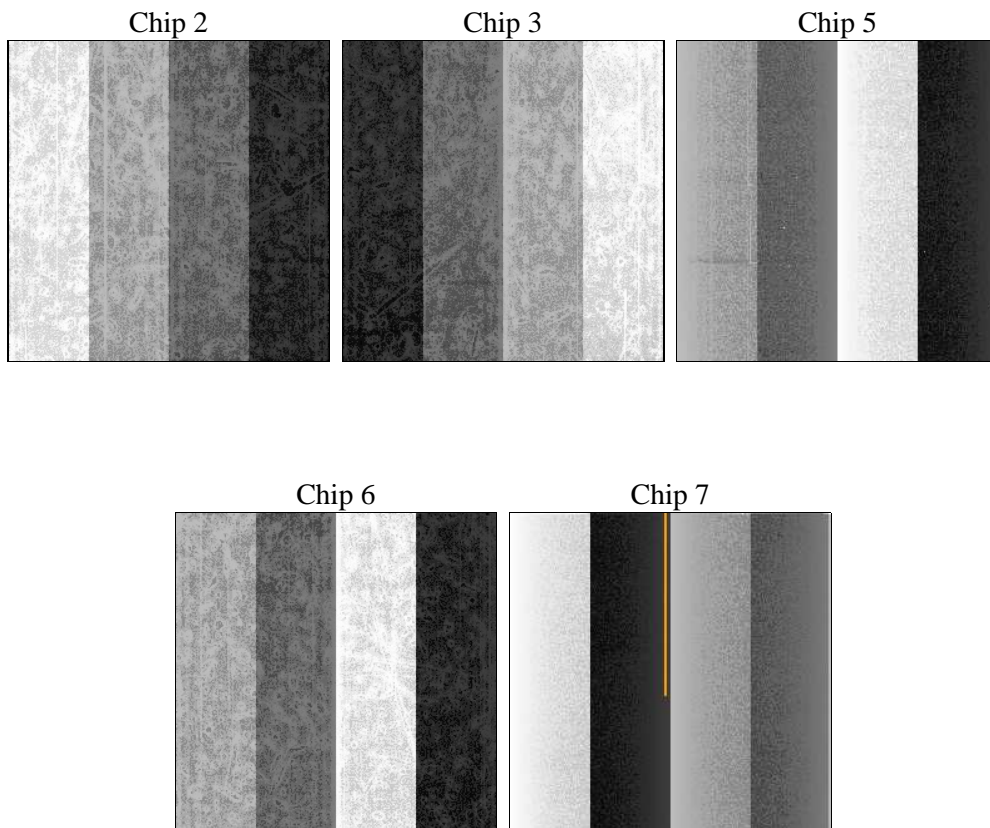
2 OBI

2.1 OBI

2.1.1 Images



2.1.2 Bias



2.1.3 Parameters

obi_num	0	Obi number	sched_exp_time	10000.000000	[s] Scheduled observation exposure time
ascdsver	10.4.1	Processing system revision	ontime	10033.259757042	Sum of GTIs [s]
caldbver	4.6.8	 	ontime2	10033.095597029	Sum of GTIs [s]
date	2015-07-20T22:34:32	Date and time of file creation	ontime3	10033.136637092	Sum of GTIs [s]
revision	1	Processing version of data	ontime5	10033.218717098	Sum of GTIs [s]
			ontime6	10033.177677035	Sum of GTIs [s]
			ontime7	10033.259757042	Sum of GTIs [s]
			l1events	412204	Number of level 1 events

2.1.4 Events

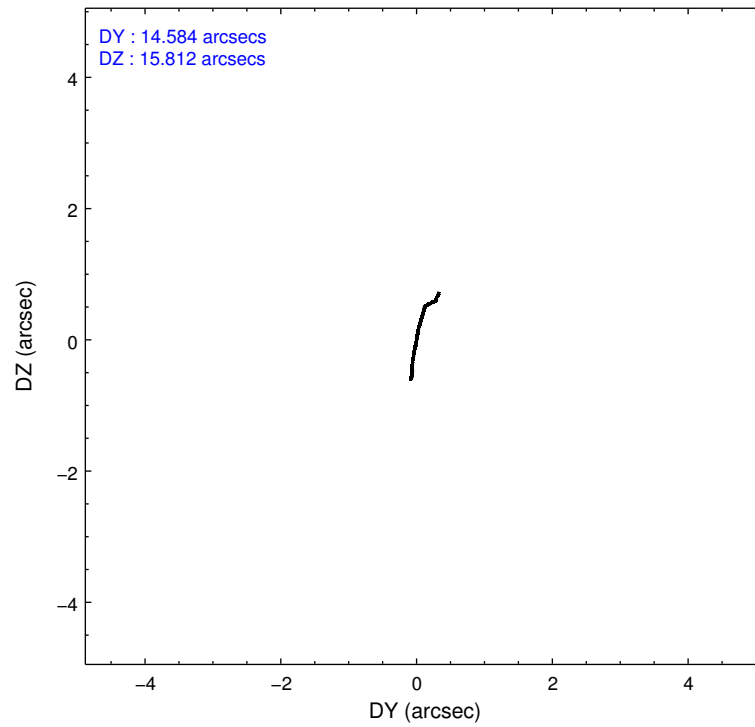
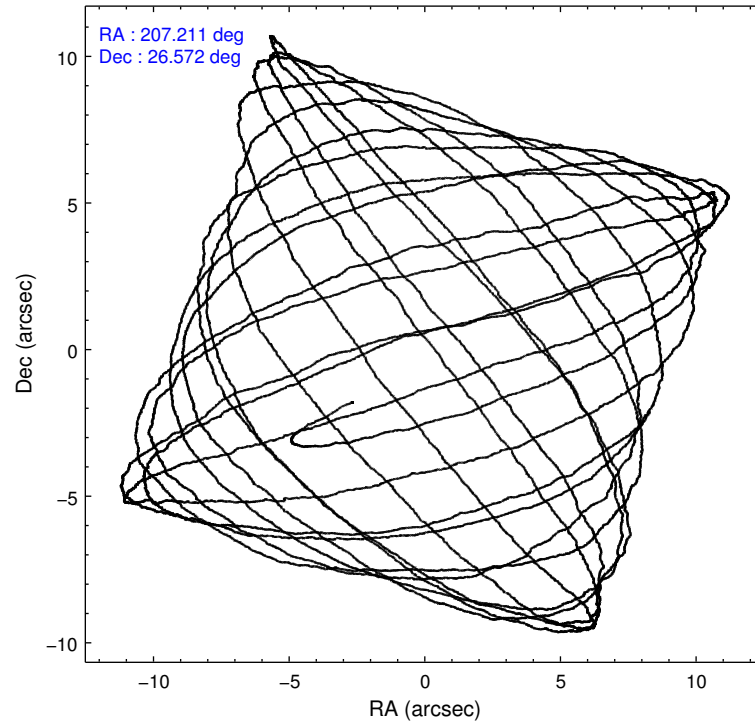
	ccd 2	ccd 3	ccd 5	ccd 6	ccd 7
level 1 events	55607	53794	85493	61790	155520
rejected events	49695	47645	44577	49426	41139
rejected %	89%	88%	52%	79%	26%

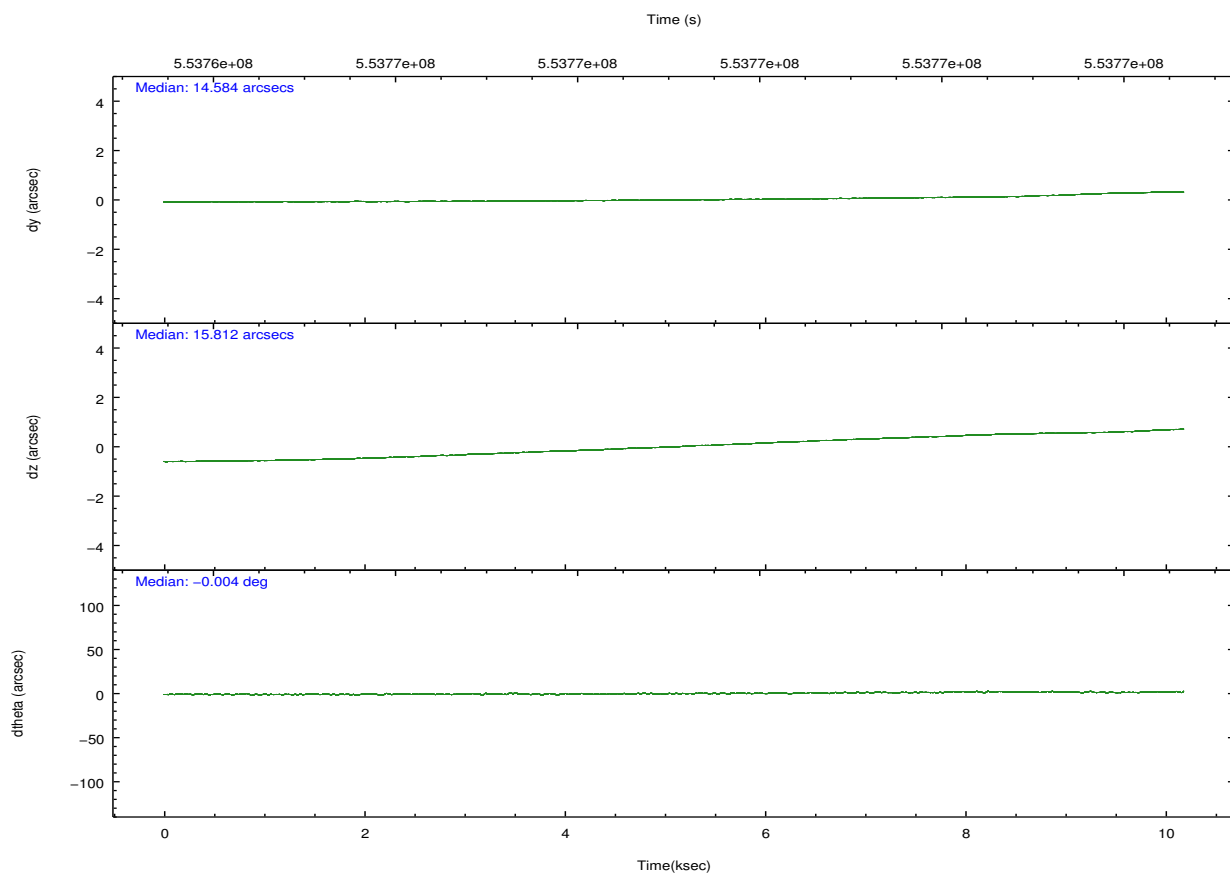
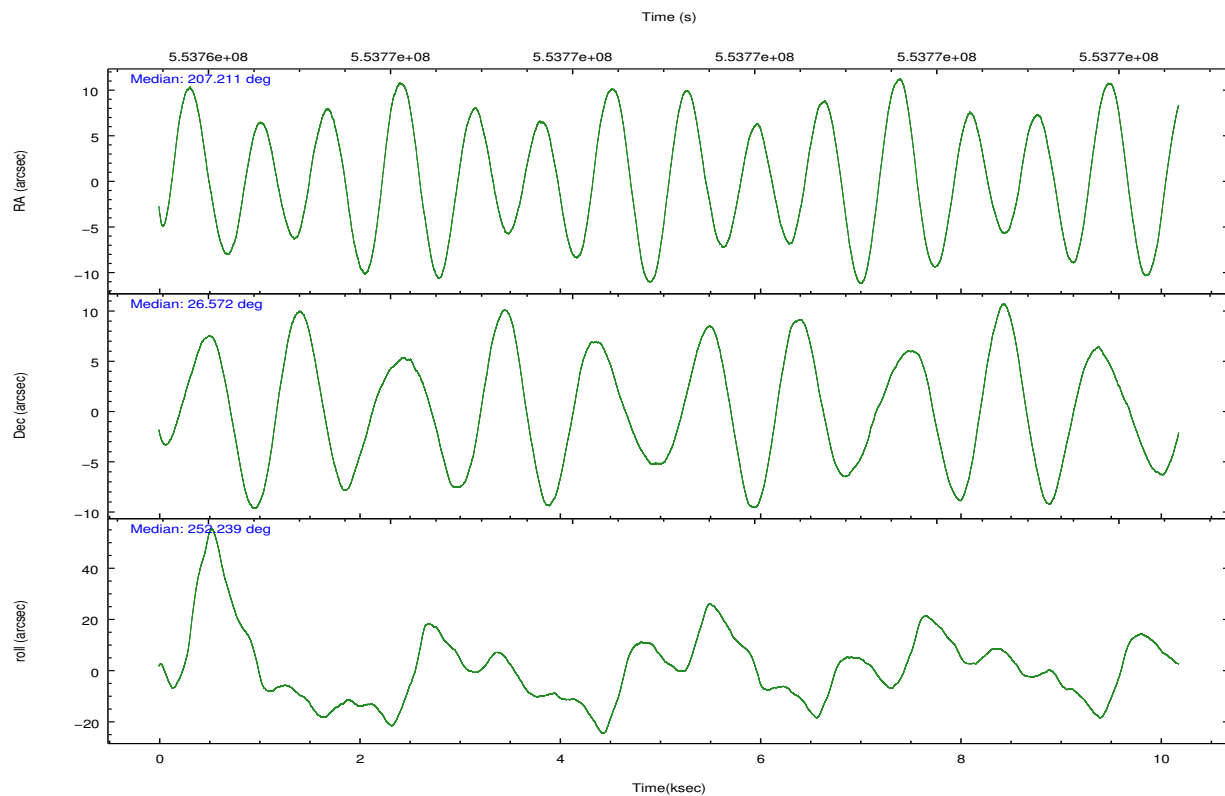
	ccd 2	ccd 3	ccd 5	ccd 6	ccd 7
grade 0 events	2346	2477	3484	6841	27018
	4%	4%	4%	11%	17%
grade 1 events	3140	39	191	47	90
	5%	0%	0%	0%	0%
grade 2 events	1318	1244	12435	2233	28871
	2%	2%	14%	3%	18%
grade 3 events	587	641	1243	794	11688
	1%	1%	1%	1%	7%
grade 4 events	592	599	1120	747	11607
	1%	1%	1%	1%	7%
grade 5 events	2115	2592	5745	2562	7289
	3%	4%	6%	4%	4%
grade 6 events	1072	1193	22661	1757	35263
	1%	2%	26%	2%	22%
grade 7 events	44437	45009	38614	46809	33694
	79%	83%	45%	75%	21%

2.2 Compared Parameters

Parameter	Planned	Actual	Parameter	Planned	Actual
Instrument	ACIS	ACIS	Obspar format version number	7	7
Detector	ACIS-23567	ACIS-23567	Obspar file type	PREDICTED	ACTUAL
Grating	NONE	NONE	Obspar update status	NONE	UPDATED
Data mode	VFAINT	VFAINT	Number of optional ACIS chips dropped	0	0
Observation mode	POINTING	POINTING	On-chip summing requested	N	N
[deg] Pointing RA	207.203831	207.2107468518905	Subarray requested	NONE	NONE
[deg] Pointing Dec	26.598190	26.57142652899394	Alternating exposures requested	N	N
[deg] Pointing Roll	252.088180	252.2417109867986	[s] Primary exposure time	0.000000	3.1
[mm] SIM focus pos	-0.684267	-0.6828225247311905			
[mm] SIM defocus	0	0.001444936568705701			
[mm] SIM translation stage pos	-190.132523	-190.1425803651734			
[mm] SIM translation stage offset	0	0.01005778216563158			
[s] Observation start time (MET)	553764143.184000	553762995.58397			
Observation start date	2015-07-20T07:21:15	2015-07-20T07:03:15			
[s] Observation end time (MET)	553774143.184000	553775227.93466			
Observation end date	2015-07-20T10:07:55	2015-07-20T10:27:07			
Read mode	TIMED	TIMED			

2.3 Aspect



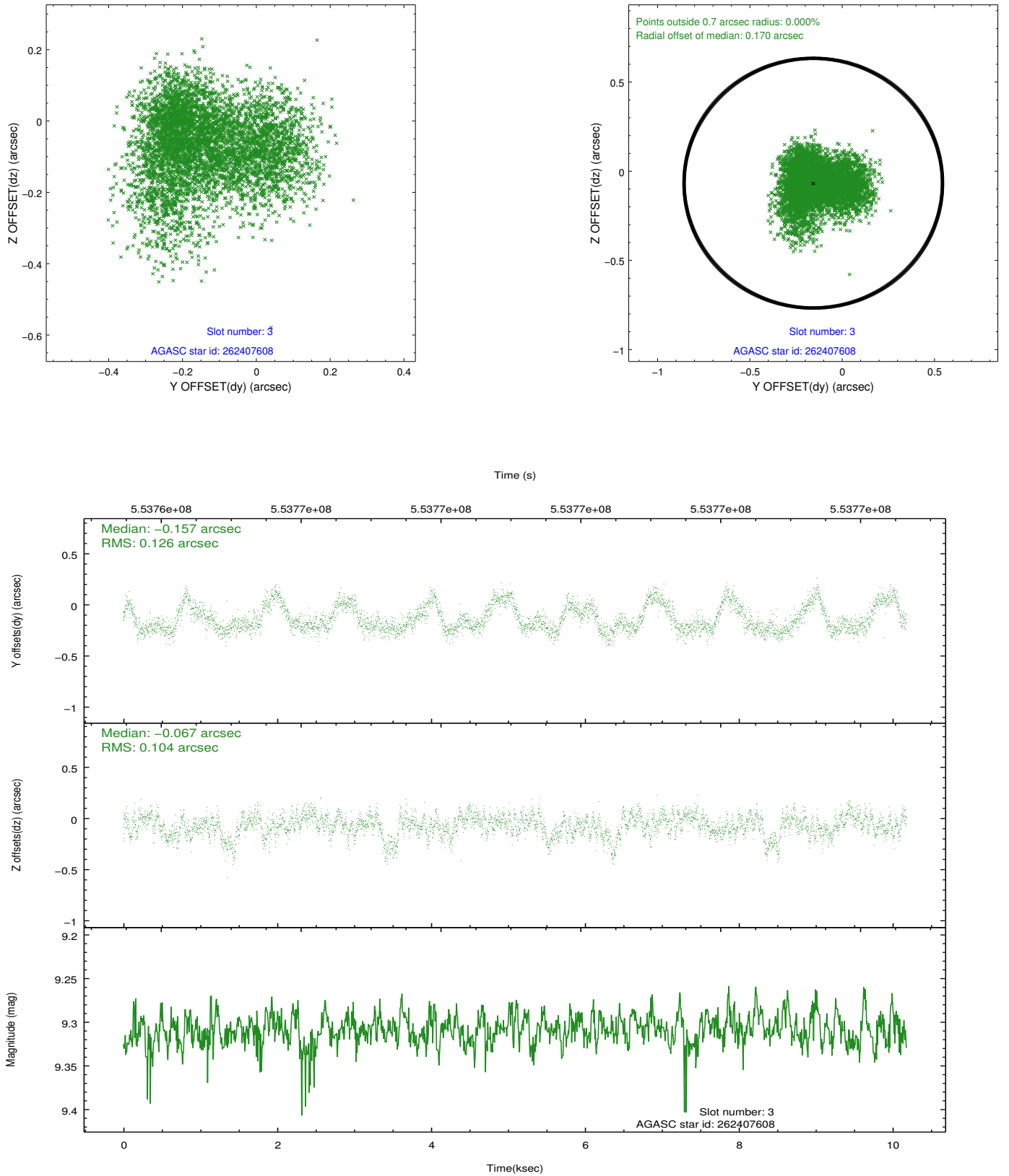


Slot Statistics

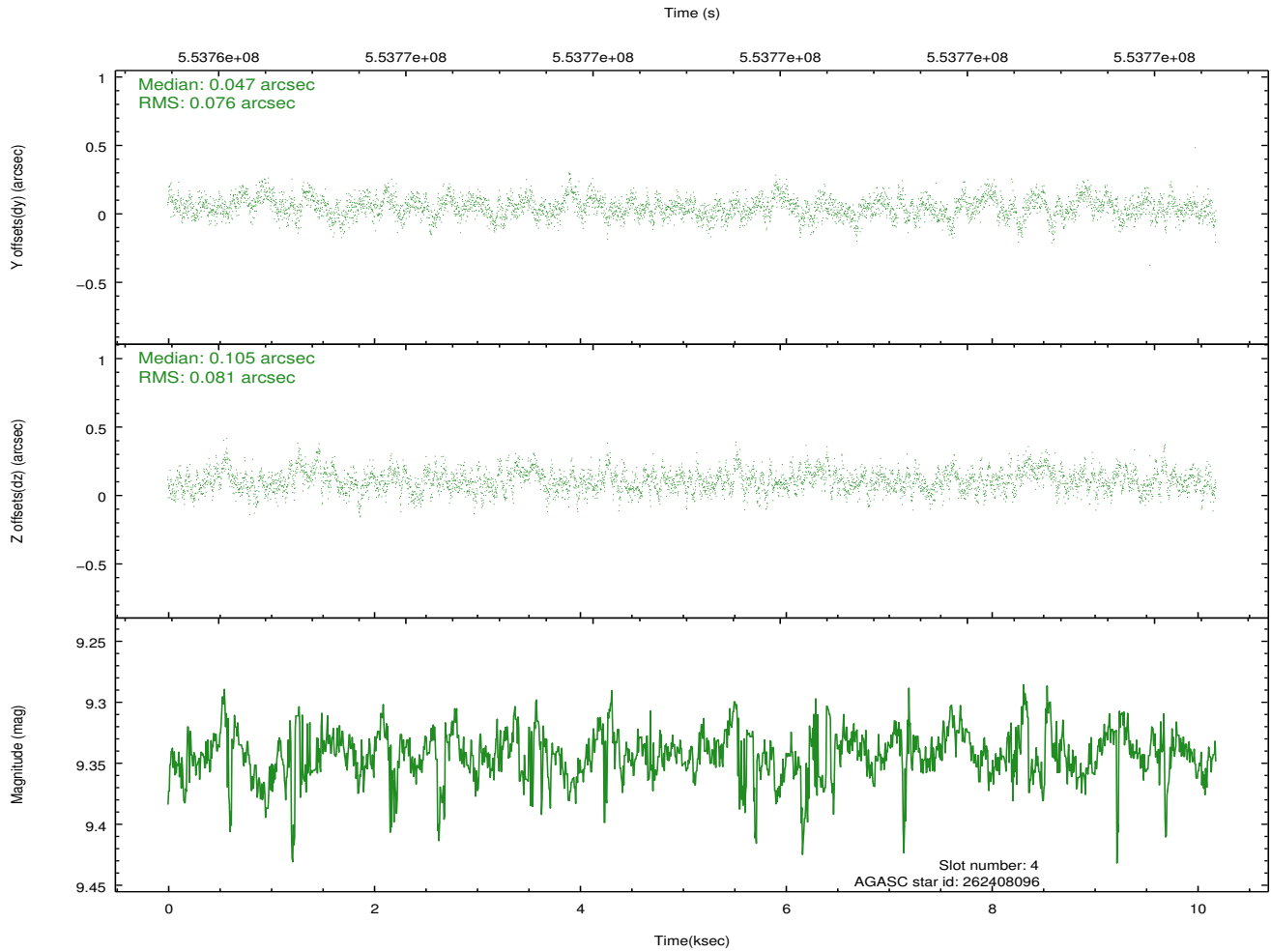
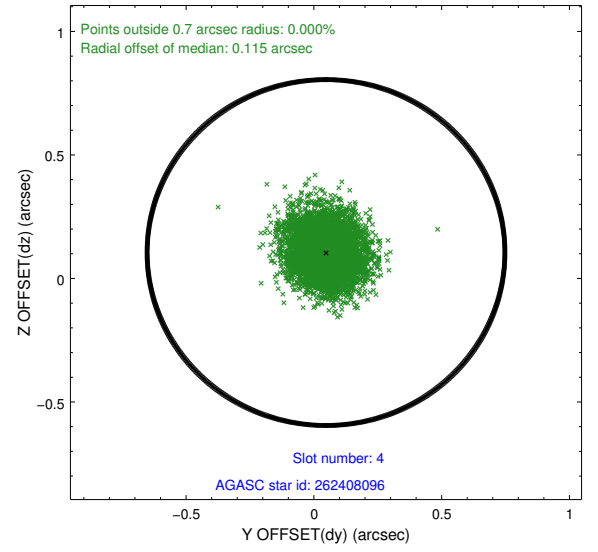
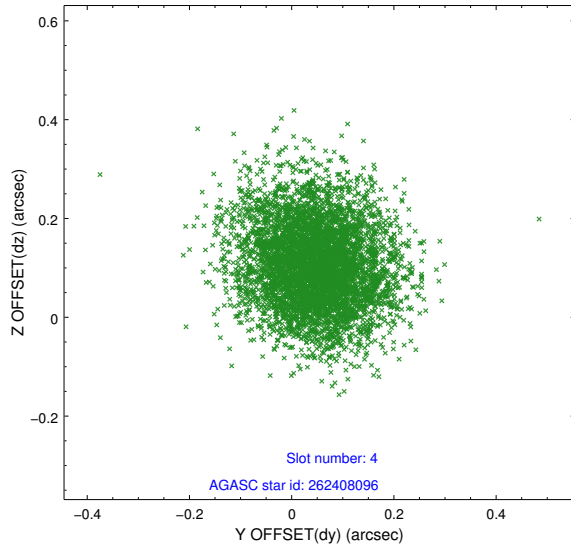
lot	status	used	id	mag	n_pts	med_dy	med_dz	drl	dr2	ra	dec	mean_y	mean_x
0	FID		ACIS-S-2	7.11	2483	-0.128	-0.055	0.009	0.018	0.000000	0.000000	-767.69	-1737.23
1	FID		ACIS-S-4	7.20	2482	0.348	0.077	0.007	0.014	0.000000	0.000000	2145.81	170.86
2	FID		ACIS-S-5	7.22	2484	-0.251	-0.013	0.009	0.016	0.000000	0.000000	-1820.01	165.07
3	GUIDE	used	262407608	9.31	4965	-0.157	-0.067	0.176	0.281	207.378401	26.435507	383.94	715.73
4	GUIDE	used	262408096	9.34	4965	0.047	0.105	0.118	0.191	207.011678	26.515421	473.81	-497.70
5	GUIDE	used	262408936	9.64	4965	0.177	0.183	0.154	0.245	207.154731	26.726554	-390.56	-291.86
6	GUIDE	used	262411960	9.62	4963	-0.042	-0.146	0.174	0.271	207.327895	25.881727	2330.57	1175.60
7	BAD	used	262407800	10.06	4665	-0.026	-0.090	0.261	0.436	207.321181	27.251762	-2352.10	-367.78

2.4 Star Slots

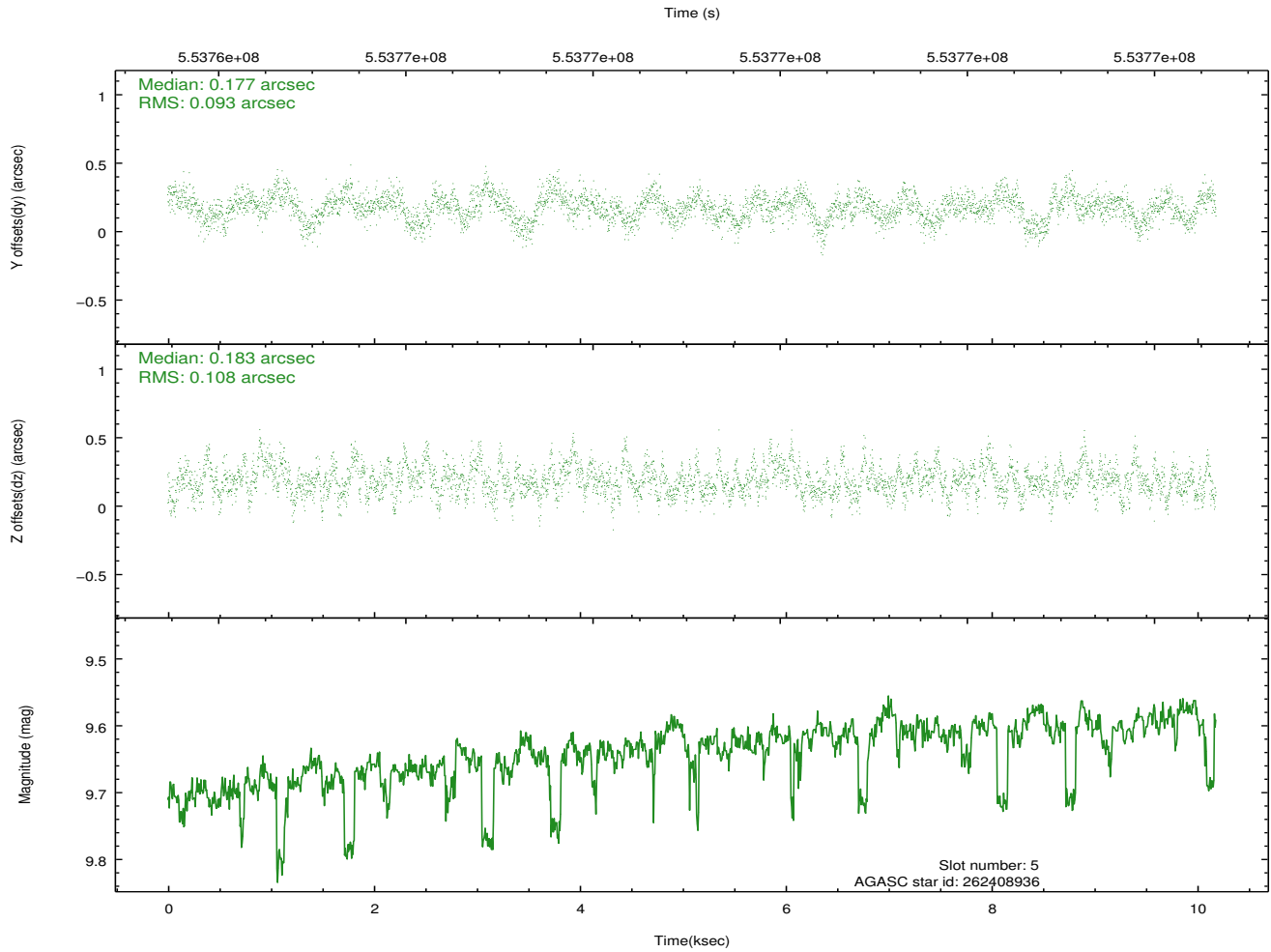
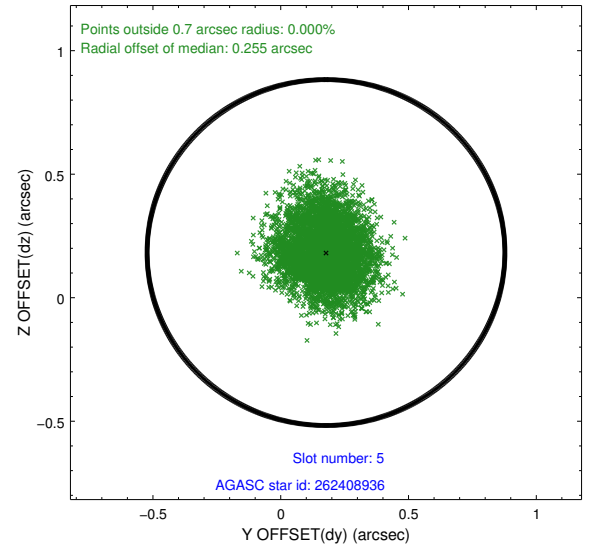
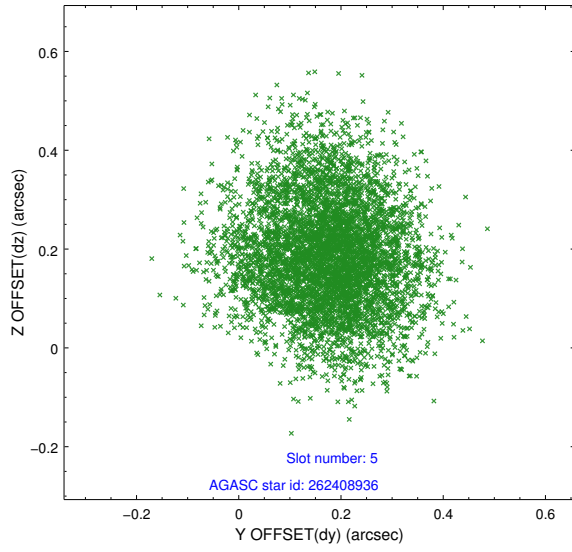
2.4.1 Slot 3



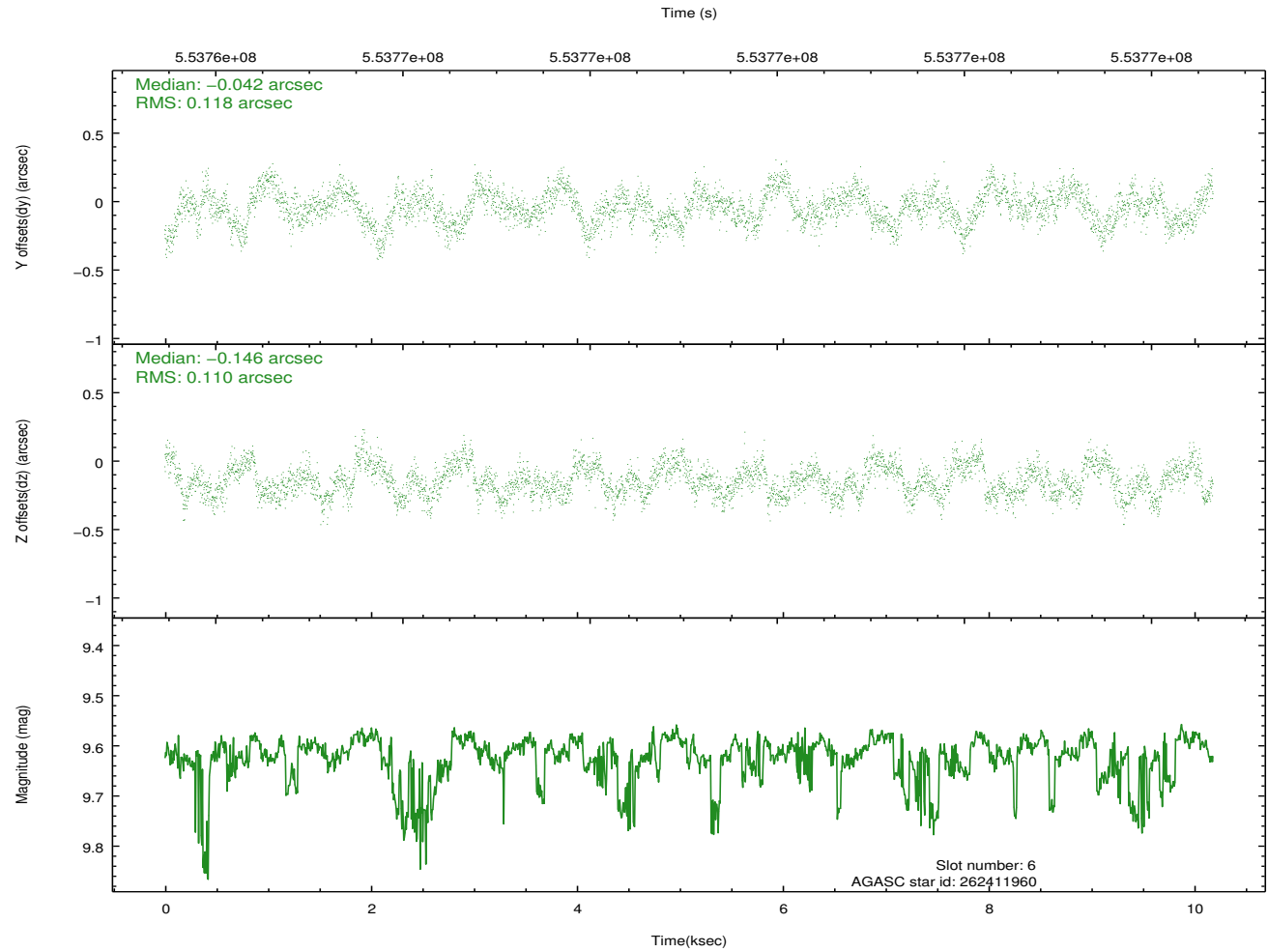
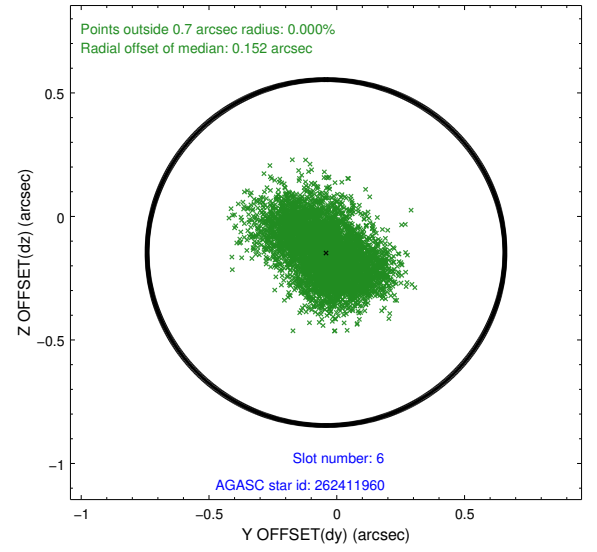
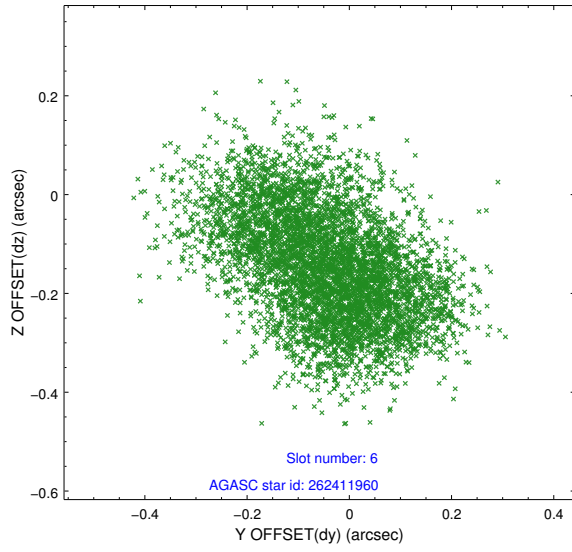
2.4.2 Slot 4



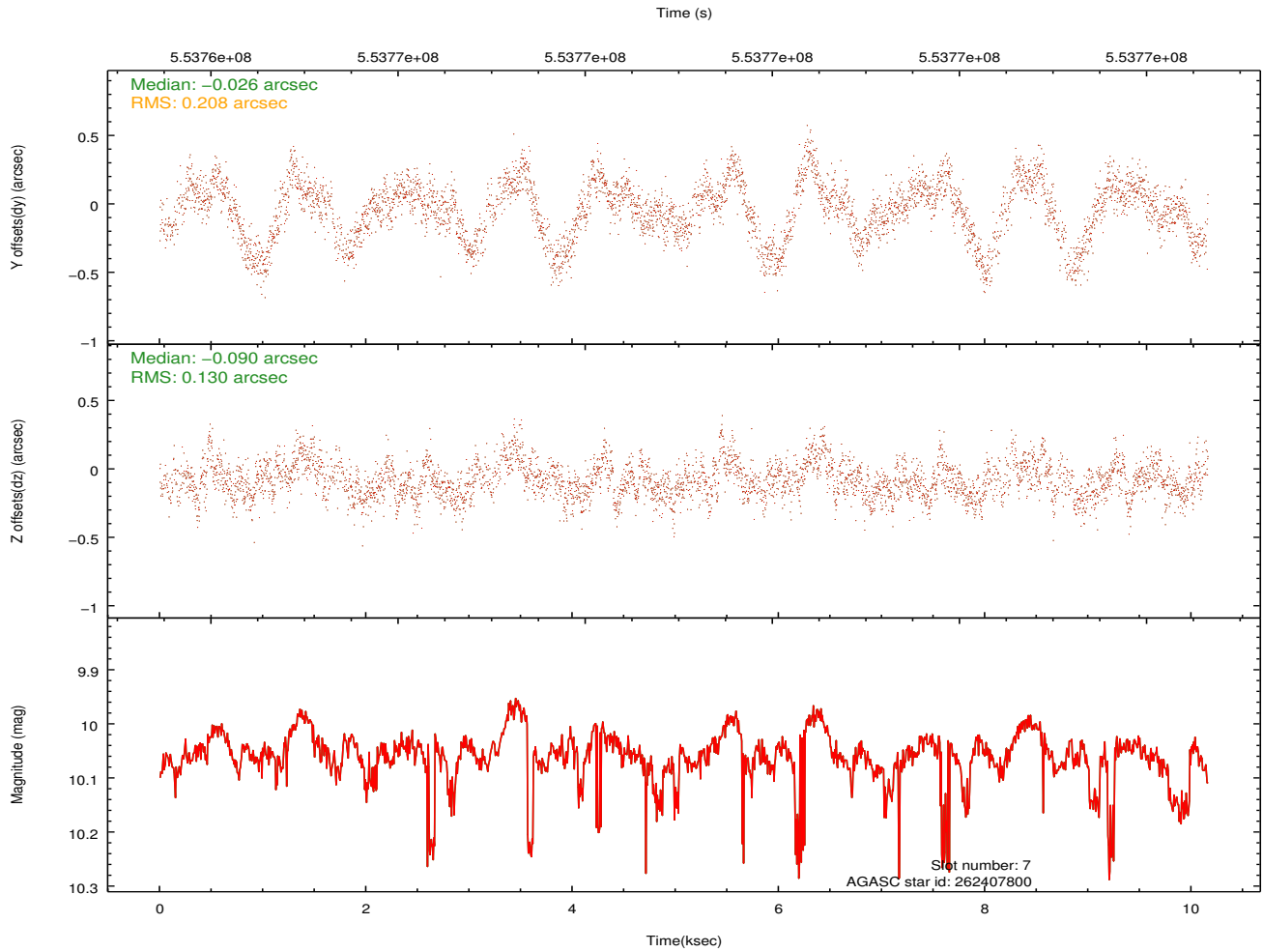
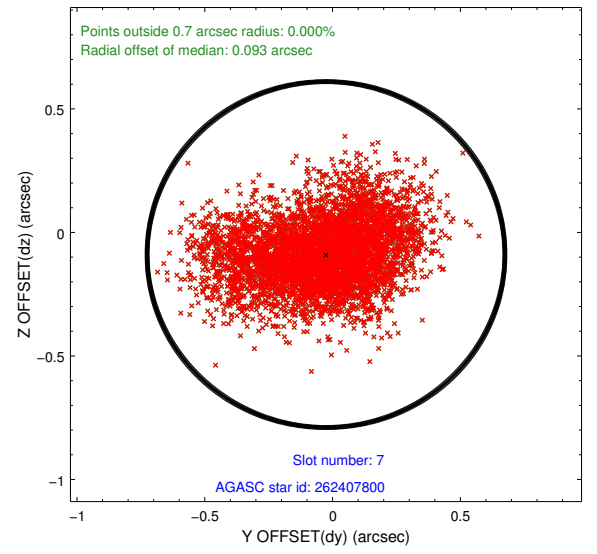
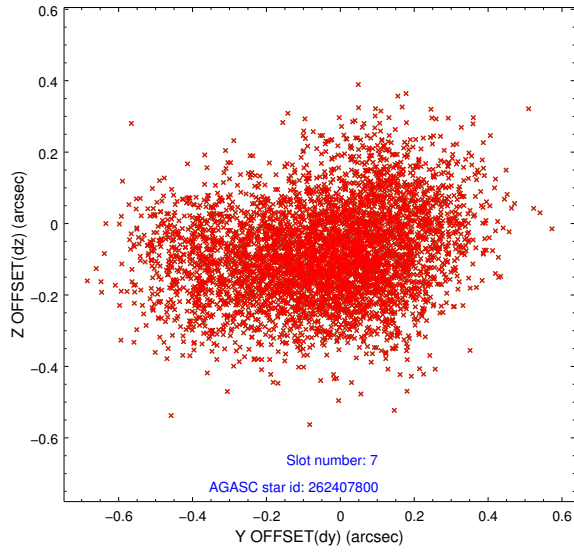
2.4.3 Slot 5



2.4.4 Slot 6

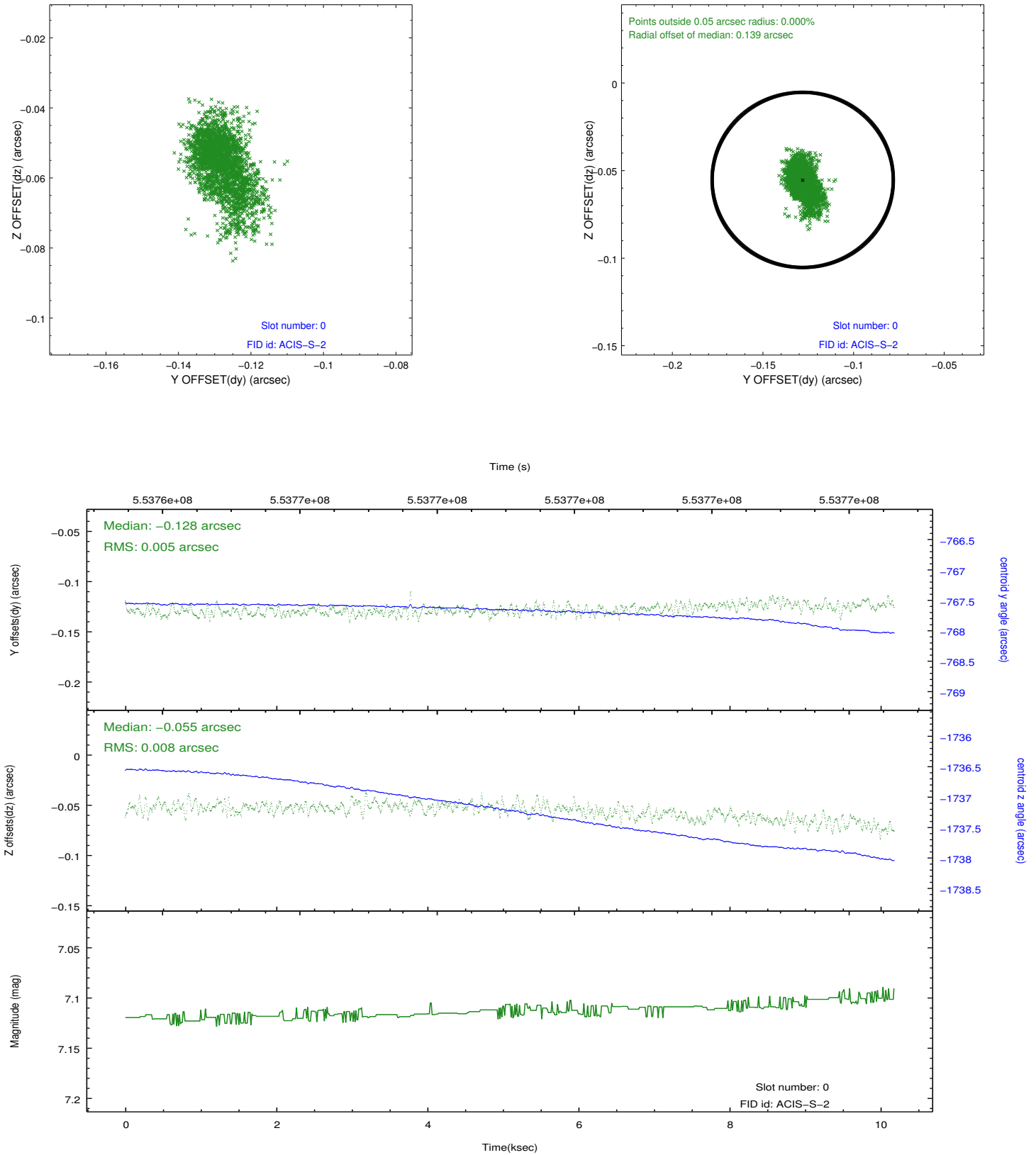


2.4.5 Slot 7

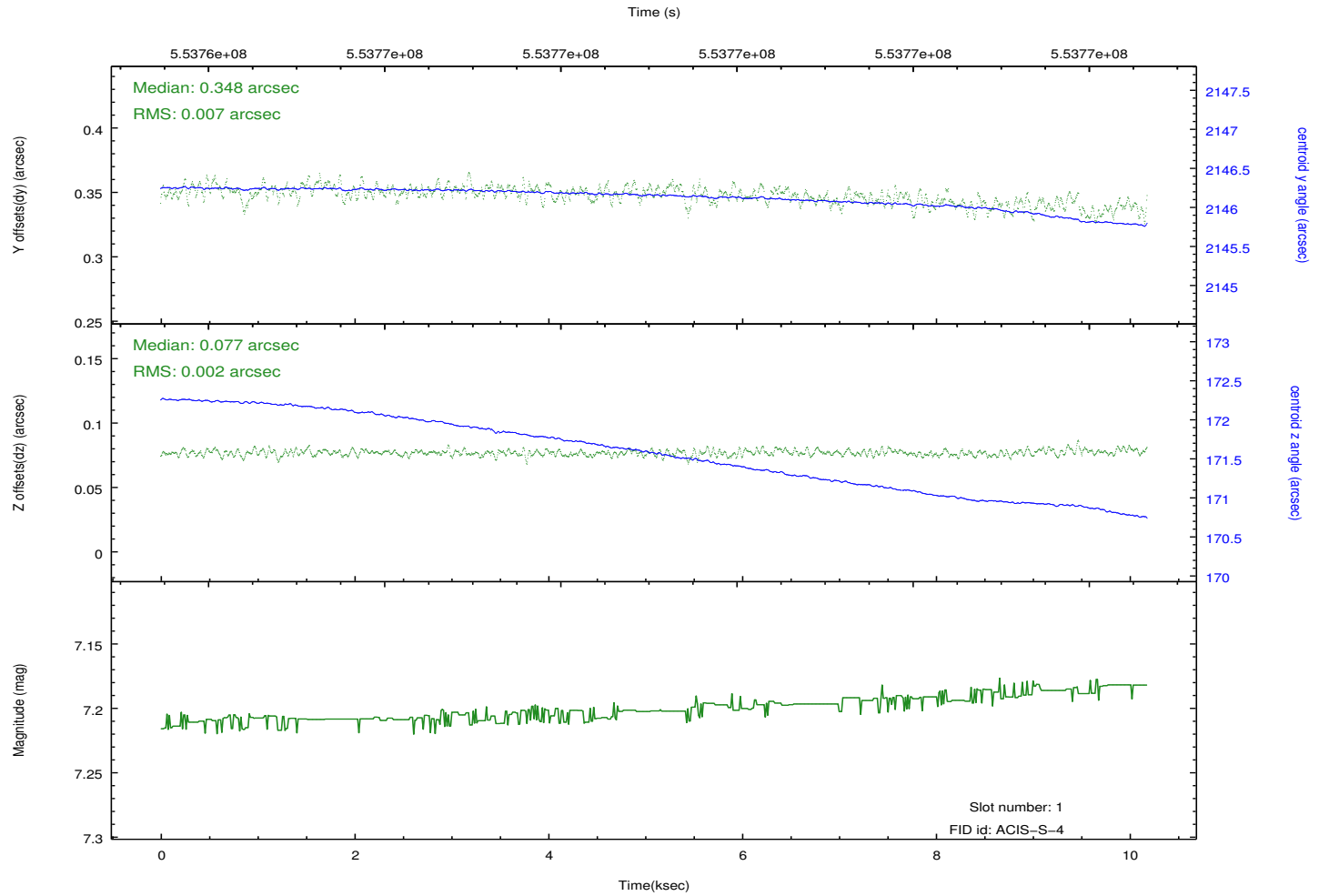
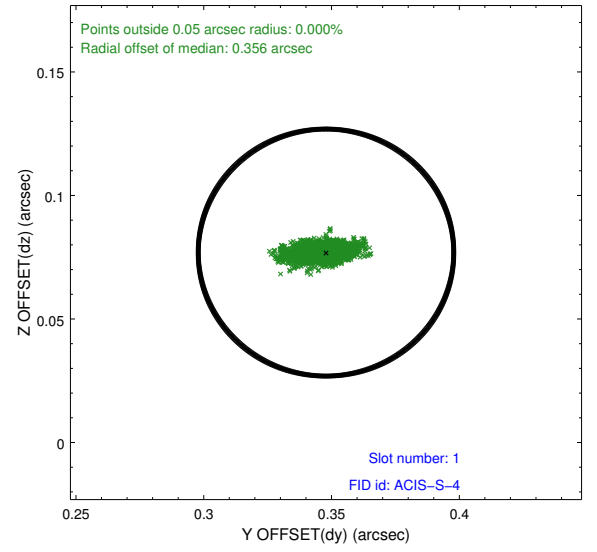
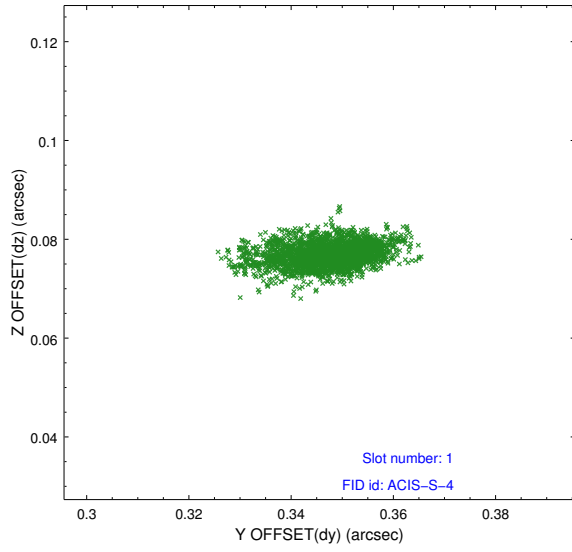


2.5 FID Slots

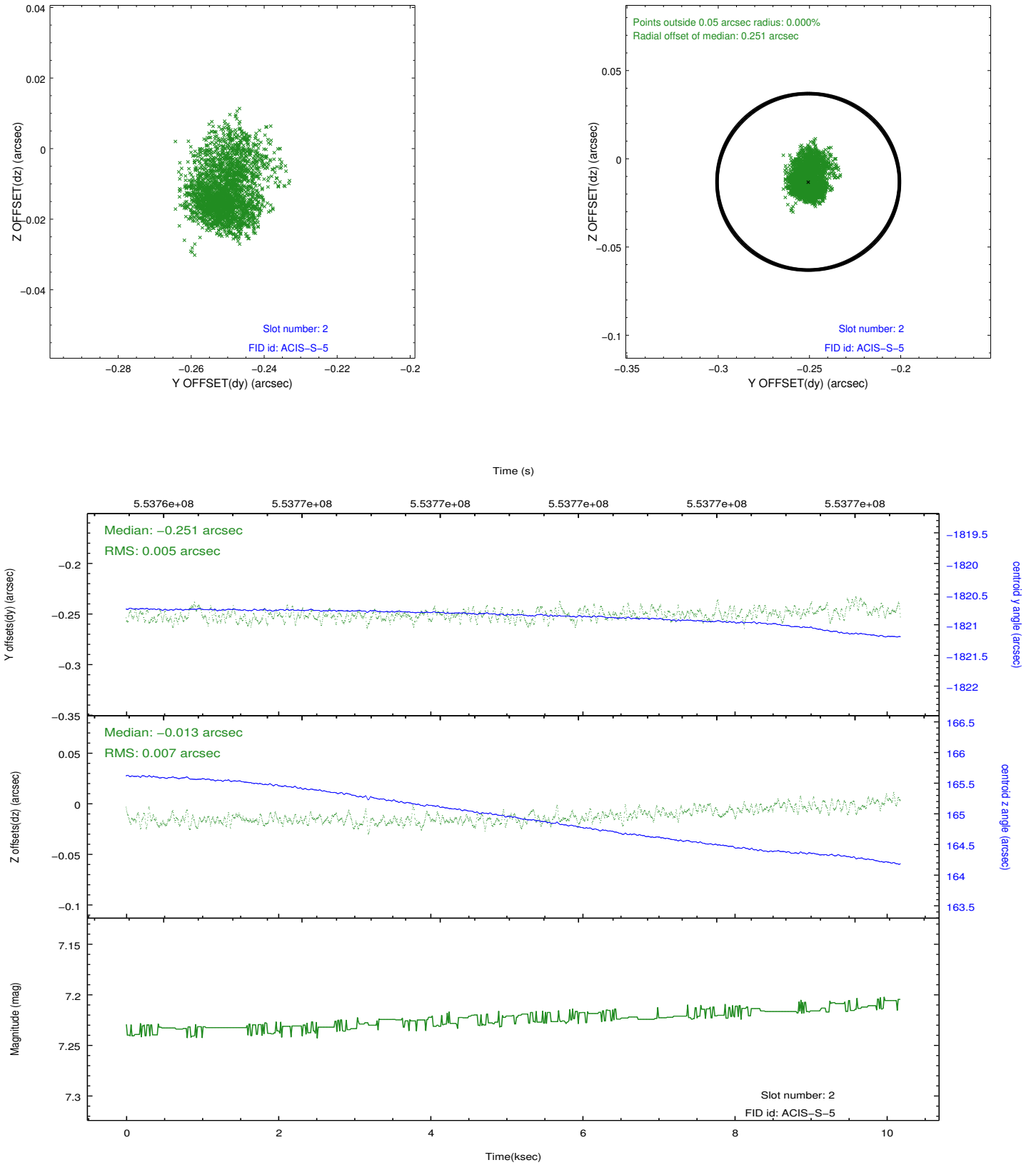
2.5.1 Slot 0



2.5.2 Slot 1



2.5.3 Slot 2



A Summary

A.1 Status

V&V Scientist	Joy Nichols
V&V Date (YYYY-MM-DD)	2015.07.21
V&V Edition	1
V&V Disposition and Status	OK
V&V Charge Time	10.033259757042

A.2 Comments